



CONGRATULATIONS - PLUSHANSKI FARMS INC.

1991 TOP PENNA. DHI COW FOR PROTEIN AND BUTTERFAT

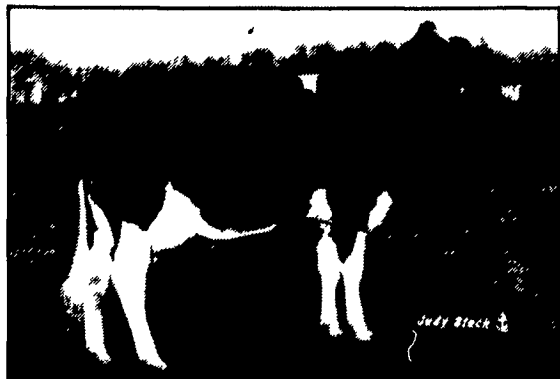
PLUSHANSKI MARK FIFE-ET VG87



3 Yr. 9 Mo. 305 Days 2X 37,210 Milk 4.5% Fat 1688 Lbs. Fat 3.5% Protein 1303 Lbs. Protein

IF THERE WAS A TRIPLE CROWN IN PA DAIRYING
PLUSHANSKI FARMS WOULD WIN TWO OF THE THREE

FIFE Not Alone - Many Other Cows
Making Fine Records



PLUSHANSKI REX FAMOUS-ET VG85
Just Finished Outstanding 2 Yr. Old Record
2 Yr. 1 Mo. 305D 2X 28,034 4.5% 1250F 3.3% 937P
Also 2 Other Cows In Herd Were In Top 4 In State
For Either Fat Or Protein.

Plusanski Brothers Make It Work



Pictured (L to R) Cary, Mike, Brown's Area Director
Rich Graff, Clyde and Charles Jr. Rich is holding a
bucket of Brown's 16 Royal. Top Cows get all the
16 Royal they can eat and Clyde says they eat it
by the wheelbarrow full.

NOTES ABOUT PLUSHANSKI FARMS AND THEIR FEEDING PROGRAM

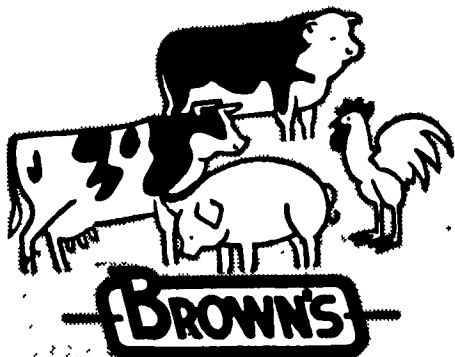
1991 Herd Average 161 Cows 21,679 Milk 4.0% 864 Lbs. Fat 3.4% 728 Lbs. Protein

Charles Plushanski Sr. started with Holsteins in the early 60's. Charles recently died following a long fight with cancer, but his sons continue to manage Plushanski Farms Inc. as he did. They say his philosophy is if you want to get cows to milk more get a bigger feed shovel. Cows are given full feed of a mixed ration containing excellent quality haylage, corn silage, wet Brewers grain and a grist mix made from grain banked corn, soybeans and/or 38 Milkmaster and minerals.

Cows are individually milked in a side opening parlor and offered 16 Royal customized for their herd using Brown's Flex Formula Feeding program. Rations are rebalanced as needed when forages change.

Rations are balanced to maximize milk production while at the same time achieving high levels of Protein and Fat. You can seldom visit the farm when one of the brothers is not around the barn either feeding or caring for the cows.

The Faith cow family developed by Charles in the late 60's is the corner stone of the herd. All the above cows trace directly back to her. The Plushanski Brothers plan to continue breeding on this family and then developing the offspring into top cows by managing and feeding for optimum performance.



F.M. BROWN'S SONS, Inc.

MANUFACTURING LIVESTOCK FEEDS SINCE 1871

BIRDSBORO, PA
19508
215-582-2741
1-800-362-6455 IN PA
1-800-367-6455 OUT OF STATE

FLEETWOOD, PA
19522
215-944-7654

SINKING SPRING, PA
19608
215-678-4567
IN PA 1-800-345-3344