



Hog Markets

New Holland Feeder Pigs

New Holland, PA
 Wed., November 6, 1991
 Report Supplied by Auction
 770 HEAD.
 1'S AND 2'S, 20-29 LBS. 90.00-118.00;
 30-39 LBS. 80.00-87.00; 40-49 LBS.
 78.00-82.00; 50-59 LBS. 70.00-80.00;
 60-69 LBS. 58.00-60.00.
 2'S AND 3'S, 20-29 LBS. 70.00-80.00;
 30-39 LBS. 65.00-70.00; 40-49 LBS.
 70.00-75.00; 50-59 LBS. 65.00-70.00;
 60-69 LBS. 50.00-59.00.

Lancaster Hogs

Lancaster Stockyards
 Sat., Nov. 2, 1991
 Report supplied by auction

300 HEAD.
 US 1 215-245 LBS. 42.00-43.00.
 US 1-2 215-245 LBS. 40.00-42.00.
 US 1-3 215-245 LBS. 39.00-40.00.
 US 2-4 215-255 LBS. 37.50-39.00.
 US 2-4 266 LBS. 36.25.
 LIGHT HOGS 195-210 LBS.
 36.75-37.75; 180-195 LBS. 34.00-36.00;
 120-180 LBS. 30.00-37.00; 80-120 LBS.
 45.00-51.00; 50-80 LBS. 40.00-50.00.
 GOOD SOWS (ALL WEIGHTS):
 30.00-33.00.
 THIN SOWS: 25.00-30.00.
 BOARS (ALL WEIGHTS):
 26.50-28.00.

Indiana Hogs

Louisville, Kentucky
 Wednesday, November 6, 1991
 INDIANA DIRECT HOGS 51 BAR-
 ROWS AND GILTS: 1.00-1.50 HIGHER.
 DEMAND MODERATE TO GOOD.
 COUNTRY: PLANTS: US 1-2 220-260
 LBS. 36.50-38.00, 37.00-38.00 FEW TO
 38.25. 210-220 LBS. 34.50-36.00.
 US 1-3 220-260 LBS. 35.50-37.00.
 SOWS: UNDER 500 LBS. 1.00 HIGH-
 ER; OVER 500 LBS. .50-1.50 HIGHER.
 US 1-3 300-500 LBS. 26.00-29.00;
 500-650 LBS. 29.00-31.00.
 **INDIANA DIRECT RECEIPTS:
 TUESDAY'S ACTUAL 19,800 TODAYS
 ESTIMATE 23,500 WEDNESDAY
 WEEK AGO 20,200 WEDNESDAY
 YEAR AGO 15,600 WEEK TO DATE
 70,500 SM PD WEEK AGO 72,500 SM
 PD YEAR AGO 59,100.
 **RECEIPTS FOR A YEAR AGO
 WILL NOT COMPARE TO THIS WEEK
 DUE TO A CHANGE IN THE REPORT-
 ING BASE.
 CARCASS BASIS HOG PRICES: HOT
 WEIGHTS: PLANT DELIVERED.
 160-185 LBS. BARROWS AND GILTS:
 1.75-1.99 HIGHER.
 US 1 (BACKFAT THICKNESS .50- .79
 IN.) 53.53 TO 58.00 US 1 (BACKFAT
 THICKNESS .80- .99 IN.) 52.23 TO 54.00
 US 2 (BACKFAT THICKNESS 1.00-1.24
 IN.) 50.65 TO 53.00 US 3 (BACKFAT
 THICKNESS 1.25-1.49 IN.) 49.65 TO
 52.50 US 4 (BACKFAT THICKNESS
 1.50-1.79 IN.) 47.93 TO 49.65.
 ACTUAL PAYING PRICE MAY NOT
 ALWAYS BE WITHIN PRICE RANGES
 AS ADJUSTMENTS ARE MADE FOR
 SUPERIOR OR INFERIOR MUSCLING
 AND BACKFAT THICKNESS WITHIN
 THE GRADES.

Peoria Hogs

Peoria, Illinois
 Thursday, November 7, 1991
 FEDERAL-STATE MIDSESSION
 AND CLOSE HOGS: 1600 TRADING
 MODERATE. BARROWS AND GILTS
 STEADY COMPARED WITH
 WEDNESDAY.
 US 1-3 220-250 LBS. 38.00-38.50
 200-220 LBS. 31.00-33.00 2-3 230-260
 LBS. 37.50-38.00 260-280 LBS.
 35.50-37.50.
 SOWS: UNDER 500 LBS. .50 LOW-
 ER, OVER 500 LBS. .50 HIGHER 24%.
 US 1-3 325-500 LBS. 31.00-31.50
 500-650 LBS. 34.00-34.50.
 BOARS: OVER 350 LBS. 28.00
 UNDER 350 LBS. 30.00.
 HOG 214 HC 38.00-38.50 HD
 38.00-38.50 HE 38.00-38.50 HI
 38.00-38.50 HJ 38.00-38.50 HK
 38.00-38.50 HQ 37.50-38.00 HR
 36.50-37.50 VV 31.00-31.50 WW
 31.00-31.50 XX 34.00-34.50 YY
 34.00-34.50 ZZ 28.00-28.00.

New Holland Hogs

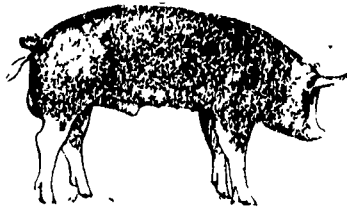
Nov. 4, 1991
 TODAY 901
 LAST MONDAY 1214
 LAST YEAR 735
 TREND: Compared to last Monday bar-
 rows and gilts 1.00-1.50 lower.
 BARROWS AND GILTS: US 1-2
 210-245 lb 38.75-39.75.
 US 1 215-235 lb 40.35-41.50.
 US 1-3 210-260 lb 37.50-38.50.
 US 2-3 270-290 lb 34.00-36.75.

St. Louis Cattle, Hogs

Wednesday, November 6, 1991
 OPENING MID-SESSION CLOSE
 CATTLE & CALVES: 50 (50 SLTR, 0
 FDR) INSUFFICIENT VOLUME
 SLAUGHTER CATTLE FOR A PRICE
 TEST.

New Holland Horses

New Holland Sales Stables
 New Holland, PA
 Monday, November 4, 1991
 REPORT SUPPLIED BY AUCTION
 318 HEAD; MARKET LOWER.
 LOCAL DRIVING HORSES
 650.00-900.00.
 LOCAL RIDING HORSES
 450.00-600.00.
 BETTER RIDING HORSES FEW
 650.00-850.00.
 MARE PONIES 125.00-225.00.
 PONY COLTS 50.00-75.00.
 GELDINGS 125.00-225.00.
 LARGER PONIES 250.00-450.00.
 LIGHTWEIGHT KILLERS
 300.00-500.00.
 HEAVYWEIGHT KILLERS
 500.00-700.00.
 THIN FEW 150.00-250.00.



Hay & Grain Markets

Diffenbach Auction Center

New Holland, Pa.
 Monday, Nov. 4, 1991
 Report Supplied by Auction
 TOTAL LOADS: 143.
 ALFALFA: 90.00-165.00.
 MIXED HAY: 75.00-167.00.
 TIMOTHY: 77.00-160.00.
 ORCHARD GRASS: 102.00-120.00.
 STRAW: 62.00-110.00.
 EAR CORN: 85.00-117.00.
 CORN FODDER: 68.00.
 OATS: 2.60 BU.
 This sale was formerly held at the New
 Holland Sales Stables. It is now held at Dif-
 fenbach's New Holland Auction Center
 Ltd., 100 W. Jackson St., New Holland,
 across from the prior sale location. Auction
 time is 10:00 a.m. Monday.

Kirkwood Hay Auction

Kirkwood, Pa.
 Tuesday, November 5, 1991
 Report Supplied by Auction
 14 LOADS OF HAY.
 ALFALFA: 4TH CUTTING
 119.00-161.00.
 CLOVER AND TIMOTHY MIX:
 170.00.
 CLOVER: 2ND CUTTING 105.00.
 CLOVER, NEW SEEDING: 2ND CUT-
 TING 91.00.
 ORCHARD AND TIMOTHY MIX:
 84.00.
 GRASS: 92.00-111.00.
 WHEAT STRAW: 81.00-91.00.
 CORN FODDER: 71.00.
 SOYBEAN STALKS: 40.00.

Keister's Hay

Middleburg, PA
 Tuesday, November 5
 Report supplied by auction
 35 LOADS.
 ALFALFA: 110.00-135.00.
 MIXED HAY: 85.00-165.00.
 STRAW: 6 LOADS, 85.00-97.50.
 EAR CORN: 12 LOADS, 85.00-105.00.
 RYE: 5.00 BU.
 OATS: 3 LOADS, 2.00-2.35 BU.
 FIREPLACE WOOD: 12 LOADS,
 17.50-45.00 LOAD.

Dewart Hay

Dewart, PA.
 Monday, November 4, 1991
 Report Supplied by Auction
 12 LOADS OF HAY, 90.00-141.00.
 STRAW: 82.00 AND 90.00.
 WOOD: 7 LOADS, 20.00-80.00 LOAD.
 CORN: 72.00 AND 88.00.
 OATS: 1.75 BU.
 Belleville Hay
 Wednesday, November 6
 Belleville, PA
 Report Supplied by Auction
 TOTAL LOADS: 42.
 ALFALFA: 125.00-177.50.
 MIXED HAY: 105.00-142.50.
 STRAW: 87.50.
 EAR CORN: 85.00-97.50.

Regional Hay

November 4, 1991
 Eastern, Pa.
 HAY & STRAW MARKET FOR
 EASTERN PA. (ALL HAY NO. 2 AND
 BETTER, PRICES PAID BY DEALERS
 AT THE FARM & PER TON) HAY
 STEADY TO WEAK; STRAW STEADY
 ALFALFA 80.00-110.00; MIXED
 HAY 80.00-110.00; TIMOTHY HAY
 65.00-110.00; STRAW 40.00-85.00;
 MULCH 20.00-40.00.

SUMMARY OF LANCASTER CO.
 HAY AUCTIONS FOR WEEK ENDING
 11/01/91. PRICES PER TON: LOADS:
 206 HAY, 65 STRAW, AND 47 EAR
 CORN.
 ALFALFA 103.00-158.00; MIXED
 HAY 82.00-155.00; TIMOTHY HAY
 100.00-160.00; STRAW 76.00-115.00;
 EAR CORN 74.00-115.00.

SUMMARY OF CENTRAL PA.
 HAY AUCTIONS FOR WEEK ENDING
 11/01/91. PRICES PER TON: LOADS: 99
 HAY, 17 STRAW & 14 EAR CORN.
 ALFALFA 91.00-147.50; MIXED
 HAY 80.00-132.50, TIMOTHY HAY
 78.00-120.00; STRAW 70.00-105.00;
 EAR CORN 76.00-124.00.

Frederick Co. Hay

Buckeytown, Md.
 Thursday, November 7, 1991
 Report Supplied by Auction
 19 LOADS. CLOUDY; MARKET
 STEADY.
 ALFALFA: 4 LOADS FAIR TO
 GOOD, 125.00-135.00.
 TIMOTHY: 5 LOADS FAIR TO
 GOOD, 119.00-130.00, 4 FAIR,
 107.00-112.00.
 CLOVER HAY: 1 FANCY LOAD,
 125.00.
 STRAW: 3 LOADS GOOD,
 40.00-60.00.
 FIREWOOD: 2 LOADS GOOD OAK,
 72.00 AND 78.00 CORD.

North Jersey Market

Hackettstown, N.J.
 Tuesday, November 5, 1991
 Hay—Straw & Grain Report
 ALFALFA HAY: 2.10-3.60 BALE.
 MIXED HAY: 1.70-2.10 BALE.
 TIMOTHY HAY: 2.00.
 CLOVER HAY: 2.20 BALE.
 WHEAT STRAW: 2.10 BALE.
 SHELLED CORN: 7.25-7.50 BAG.
 CORNMEAL: 7.50 BAG.
 OATS: 7.50 BAG.
 TOTAL: 16 LOTS.

Vintage Hay

Paradise, PA
 Thurs., November 7, 1991
 Report Supplied by Auction
 8 LOADS.
 MIXED GRASS: 100.00.
 ALFALFA AND MIXES: 90.00-170.00.

Green Dragon Hay

Ephrata, Pa.
 Friday, November 1, 1991
 Report Supplied by Auction
 TOTAL LOADS: 102.
 MIXED HAY: 86.00-140.00.
 ALFALFA: 75.00-150.00.
 TIMOTHY: 85.00-137.00.
 STUBBLE HAY: 86.00.
 CORN STALKS: 56.00.
 STRAW: 69.00-105.00.
 EAR CORN: 74.00-134.00.
 OATS: 2.45 BU.
 RYE SEED: 4.75 BU.
 WOOD SHAVINGS: 1.50 BAG.
 FIREWOOD: 35.00 AND 40.00 LOAD.

Good's Hay

Leola, Pa.
 Wed., November 6, 1991
 Report Supplied by Auction
 TOTAL LOADS: 93.
 MIXED HAY 88.00-161.00.
 CORN: 71.00-127.00.
 TIMOTHY: 91.00-150.00.
 ALFALFA: 74.00-154.00.
 STRAW: 72.00-108.00.
 OATS: 2.10-2.55 BU.
 GRASS: 87.00-106.00.
 CORN FODDER: 54.00-59.00.

Westminster Hay

Westminster, Md.
 Tuesday, November 5, 1991
 Report Supplied by Auction
 TOTAL LOADS: 98.
 ALFALFA: 1.80-3.70 BALE.
 ALFALFA MIX: 1.35-2.10 BALE.
 TIMOTHY: 90.00-112.50, 1.60-2.80
 BALE.
 TIMOTHY MIX: 1.00-1.80 BALE.
 ORCHARD GRASS: 1.25-1.35 BALE.
 TIMOTHY ROUND BALES:
 21.00-25.00 EACH.
 BLUEGRASS ROUND BALES: 14.00
 EACH.
 CLOVER HAY: 1.60 BALE.
 STRAW: .50-1.60 BALE.
 WOOD: 30.00-72.50 CORD.

Leinbach's Hay

Shippensburg, PA
 November 2 and 5
 Report Supplied by Auction
 TOTAL LOADS: 64.
 ALFALFA: 90.00-172.00.
 MIXED HAY: 75.00-172.00.
 TIMOTHY: 75.00-115.00.
 CLOVER: 107.00.
 BROME GRASS: 92.00-110.00.
 ORCHARD GRASS: 84.00-107.00.
 EAR CORN: 94.00-125.00.
 WOOD: 25.00-40.00 PICK-UP LOAD.

In this issue

Four Sections

DEPARTMENTS

EditorialA10
 Farm Calendar.....A10
 Farm ForumA10
 Mailbox Markets.....B23
 Sale ReportsB30
 Public Auction Register.....B31
 Business NewsC 6
 Classified Ads.....C14,D 7

COLUMNS

Now is the Time.....A10
 Have You Heard.....B 2
 On Being A Farm Wife.....B 4
 Microwave Magic.....B 5
 Taking Time.....B11
 Ida's Notebook.....B12
 Farm Management.....C 2
 Beef Briefs.....C 3
 Poultry Pointers.....C 4

FEATURES

Cuppert FarmB 3
 Farm Women Convention.....B12
 Teddy Bear Picnic.....B15
 Families Under Seige.....B16

HOME AND YOUTH

Homestead NotesB 3
 Home On The RangeB 6
 Cook's Question CornerB 7
 Kid's KornerB10
 Farm Women Societies.....B17
 FFA HappeningsD 3
 4-H Happenings.....D 6

DAIRY

DHIA Focus.....A26
 Milk Promotion.....A30
 Sinan's HolsteinsA34
 Berks Co. DHIA.....B18
 Adams Co. DHIA.....B19
 Lycoming Co. DHIAB19
 Lebanon 4-H Dairy.....B24
 Lancaster Co. DHIAC 9
 Potter Co. DHIAC14

Walter M. Dunlap and Sons offers all cattle
 feeders two marketing days - Give us a call for
 advice and marketing conditions.

MONDAYS OR WEDNESDAYS

Consign With Us - For The Marketing Edge

**Consign Your Beef Cows
 Mondays and Wednesdays**
 No Waiting To Unload - Good Weight Conditions

**Next Feeder Cattle Sale
 Friday, Nov. 15 - 11:00 A.M.**

Walter M. Dunlap and Sons
 Lancaster Stockyards
 Tel. (717) 397-5136

An Old Line Commission Firm Keeping
 Abreast With The Times

KIRKWOOD HAY AUCTION

Hay, Straw and Grain Auction
EVERY TUESDAY
 12:00

Located Rt. 472 5 miles
 south of Quarryville or 6
 miles north of Oxford cor-
 ner of Rt. 472 and Noble
 Road.

Lloyd H. Kreider,
 Auctioneer
 AU-000513L
 No out of state checks

FEEDER CATTLE SALE

Tuesday, Nov. 12
 Approx. 7:45 P.M.

CARLISLE

Livestock Market
 Just East off I-81 at Exit 12
 (717) 249-4511
 or Evenings, Jim 249-2359