

How To Price Corn Silage

The following information on pricing was compiled by Lehan Power, Extension Farm Economist in Bradford County. Although it is getting to you late in the harvest, it may answer your questions this year, as well as, being a valuable reference for the 1992 harvest season.

Pricing High-Moisture Corn

In recent years it has become common practice to buy and sell high-moisture corn. The question we frequently are asked is "What is the right price?"

The price should be based on the price or anticipated price of dry corn. However, harvesting, transportation and drying cost should also be considered by both the buyer and the seller.

There are two formulas that may be used to calculate what a weight of grain at a given level of the dry matter would equal in dry bushel equivalents.

For high-moisture ear corn pounds of wet corn X dry matter (expressed as a decimal) + 59.8 = bushels of dry shelled corn.

As an example 9,000 pounds of ear corn X .65 dry matter (35% moisture) + 59.8 = 98 bushels of dry shelled corn equivalent.

For high-moisture shelled corn pounds of wet shelled corn X dry matter (expressed as a decimal) + = bushels of dry shelled corn.

An example would be, 35,000 pounds of wet shelled corn X .7 dry matter (30% moisture) + 47.8 = 512 bushels of dry shelled corn equivalent.

At this point, an agreed upon shelled corn price may be used to calculate the value of the high-moisture corn. Remember- Trading based on unharvested corn, harvesting, hauling and avoided drying costs should be considered!

Corn Silage Pricing

At this time of year we receive almost daily questions regarding the price of corn silage, from both buyers and sellers. There is a long and a short answer to this question.

The short answer is that corn silage is worth about one-third of the price of Mixed Mostly Legume Hay (MMLH). If MMLH is worth \$100.00 in the mow, then corn silage is worth approximately \$33.00 in the silo.

The longer and probably more accurate answer follows.

First, let's take a look at the value of corn silage based on the price of dry shelled corn.

TABLE #1

Net Value of Corn Silage as a Dairy Feed (1)					
Moisture Corn	@ \$2.50 Corn	@ \$2.75 Corn	@ \$3.00 Corn	@ \$3.25 Corn	@ \$3.50 Corn
70%	\$ 19-23/T	\$ 21-25/T	\$ 23-27/T	\$ 25-29/T	\$ 27-31/T
65%	25-29	27-31	29-33	31-35	33-37
60%	30-34	32-36	34-38	36-40	38-42
55% (2)	29-33	31-35	33-37	35-39	37-41

(1) Value after deducting storage/feeding loss; (2) Silage dryer than 60% has more feeding loss.

Next we'll go out on a limb and give some estimated values for "abnormal" corn silage. This could be caused by dry weather, early frost, late planting or some other reason.

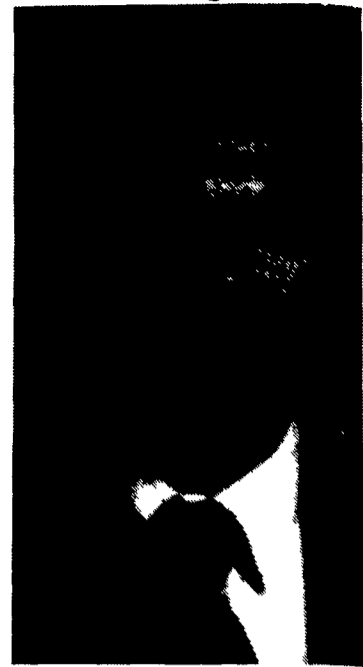
KANSAS CITY, Mo.— Clifford J. Day, agricultural education instructor and FFA advisor at Garden Spot High School, has been nominated to receive the Honorary American FFA Degree.

Day was nominated for the degree by the Pennsylvania FFA Association. The nomination was approved by the National FFA board of directors at their recent meeting in Alexandria, Va.

The Honorary American FFA Degree is the highest honorary award presented by the FFA. This

year, 73 teachers of agricultural education were nominated to receive the degree during the 64th National FFA Convention in Kansas City, Mo., November 14-16.

Day has been an agricultural education instructor at Garden Spot for 21 years. During that time, he has had 14 students who have earned the American FFA Degree, 138 students who have received the State FFA Degree, 19 students who have earned state proficiency awards, 10 state officers, and eight finalists in the



Clifford J. Day

National Proficiency Award program.

Each year at least 50 of the 11,200 teachers of agricultural education in the nation are awarded the Honorary American FFA Degree. The degree is awarded on the basis of points scored by a teacher for accomplishments as an agricultural instructor, FFA advisor, and participant in professional agricultural teachers' organizations.

Teachers are awarded points for each student they have supervised who has earned state or national FFA awards. Teachers also

(Turn to Page A39)

TABLE #2

Estimated Value of Abnormal Corn Silage in Relation to Normal Corn Silage

Abnormality	Moisture	As % of Normal*
Predough Immature	80%	58%
Predough Immature dry	60%	105%
Drouth (50% ears)	70%	85%
Drouth (50% ears)	60%	112%
Drouth (30% ears)	60%	107%
Drouth (no ears)	60%	107%

* Normal would be well-cared 70% moisture corn silage with 72% TDN on a dry-matter basis.

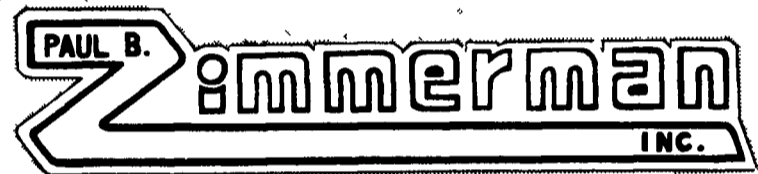
That gives you an idea of what corn silage is worth as a feed out of a silo. But what if you are purchasing a field of standing corn? Following are several factors you could consider:

1. What does it cost to harvest the silage?
2. What is the moisture level of the corn? (See Table #1)
3. How well cared is the corn? (See Table #2).
4. How mature is it? (See Table #2).
5. How far must it be hauled (at 25 to 50 cents/T per mile)?

TABLE #3

Cost of Harvesting Corn Silage (1)

Yield Level	Cost per Acre	Cost per Ton
18 T/A	\$ 75 00	\$ 4 17
14 T/A	66 00	4 70
10 1/2 A	55 00	5 50



GATES and FENCING



Coated With Baked On Top Grade Polyester TGIC Powder Coating After Fabrication

- Super tough finish
- Superior electrical insulation
- Resists acid & chemicals
- Protection from rust & corrosion
- Chip resistant
- Smoother finish, stays cleaner

Standard Heights For Gates & Fencing:

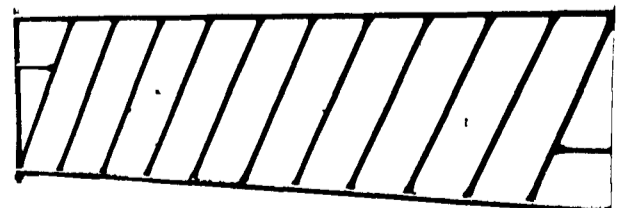
- 38" High - 4 Bar • 48" high - 5 Bar • 54" High - 6 Bar

NOTE:

- 13 Ga. steel 15% heavier than 14 Ga. steel
- 13 Ga. steel 45% heavier than 16 Ga. steel
- 13 Ga. steel 85% heavier than 18 Ga. steel

All Gates & Fencing Made Of 1.9" Outside Diameter High Yield Steel Tubing With 13 Ga. Wall

SLANT BAR FEED THRU FENCE



Custom Built To Any Length

PAUL B. ZIMMERMAN, INC.

Call or Write For Additional Information And Your Nearest Dealer

295 Woodcorner Rd.
Lititz, PA 17543
1 Mile West of Ephrata
Phone: 717-738-1121

C B HOOBER & SON, INC
Intercourse PA
(717) 768-8231

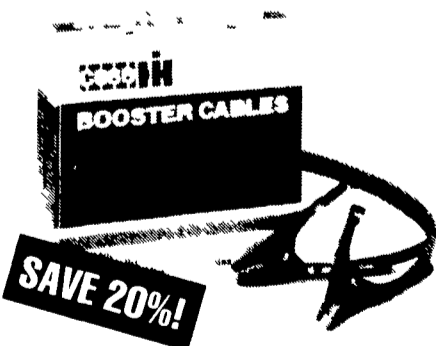


HOOBER EQUIPMENT, INC
Middletown, DE
(302) 378-9555

TWO LOCATIONS
The Saving Place

Keep Case IH booster cables in all your machines!

You're always ready to start with heavy-duty, Case IH battery booster cables on the job. Insulated, color-coded, no-tangle PVC cables take a full 400 or 500 amps of current. Plus Cycloc® clamps are shock-proof, and heat and cold-proof. Won't rust, chip or peel.



NOW...
AT OUR BEST
PRICE EVER!



\$17²⁸

12 ft. 400 amp
6 Gauge
(1132271R1)
Reg. Sale Price \$21.46
Save \$4.18

\$25³⁴

16 ft. 400 amp
4 Gauge
(1132272R1)
Reg. Sale Price \$31.64
Save \$6.30

\$28⁸³

16 ft. 500 amp
4 Gauge
(B90988)
Reg. Sale Price \$36.17
Save \$7.24

WORRY IS INTEREST PAID ON TROUBLE BEFORE IT IS DUE.

WE SHIP PARTS DAILY

Via FED EXP. - UPS - PPSH - BUS - AIR FREIGHT, ETC

HOURS

Mon-Fri 7 AM-5 PM Sat 7 AM-Noon

CALL US...
It Could Be We Have It



Authorized
UPS Station



YOU STAY PUT

Pick Up Your Phone And Place Your Parts Order With Us