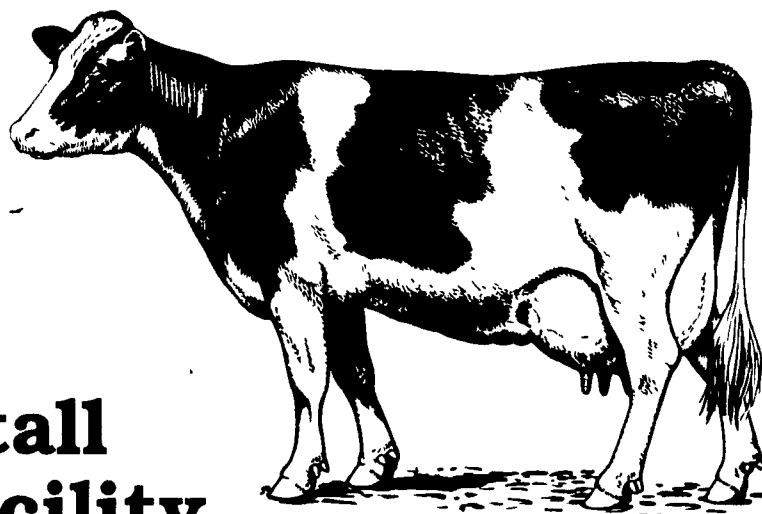
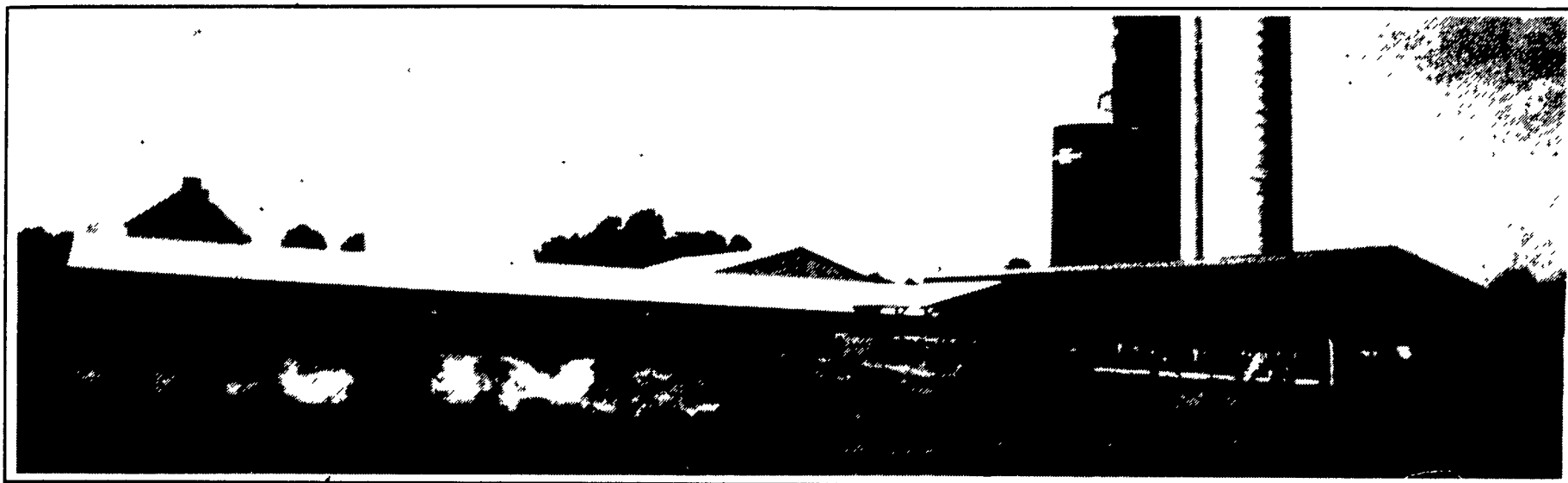


# CONGRATULATIONS TO ALVIN SENSENIG & FAMILY

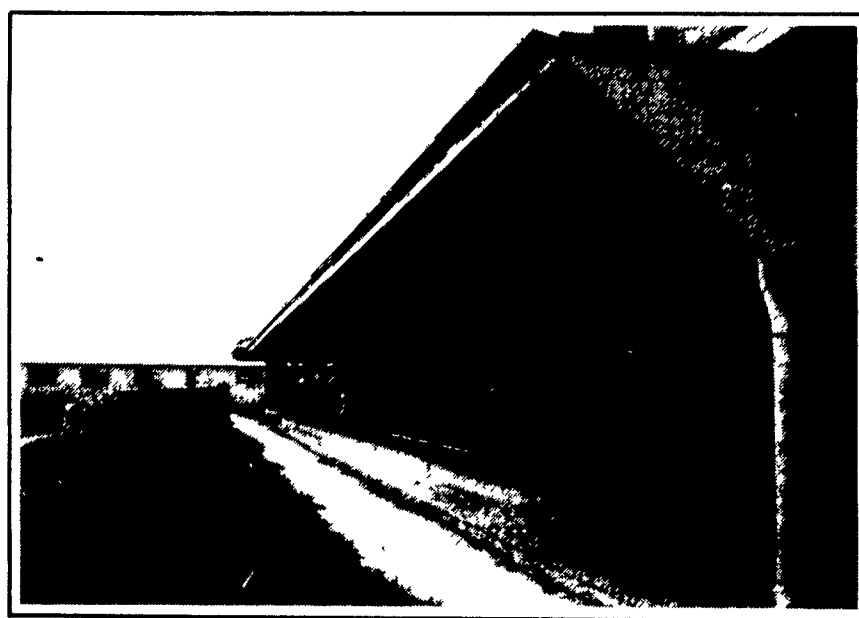
Quarryville, PA



## On Their All New 70 Stall Dairy Barn And Heifer Facility



DAIRY BARN



4' DEEP x 96' LONG x 12' WIDE PIT WORK BY GROFFDALE CONCRETE

GENERAL CONTRACTOR



## Smucker Construction

6086 Beaver Dam Rd., Narvon, Pa. 17555 717-768-8606



Custom Design And Construction Of... Dairy Barns, Heifer Facilities, Equipment Sheds, Horse Barns, Etc.

### LAPP'S BARN EQUIPMENT

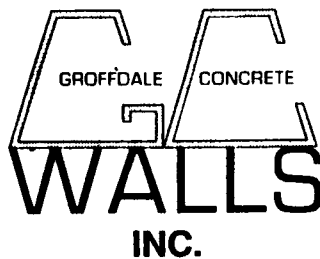
5935 OLD PHILADELPHIA PIKE  
GAP, PA 17527



PHONE: 717-442-8134  
WE SERVICE WHAT WE SELL  
— Radio Dispatched Trucks —



- LAPP STALLS
- COW MATS
- WATER BOWL
- GUTTER GRATES
- BOX STALLS
- ZIMMERMAN GATES
- ZIMMERMAN HEADLOCKS
- J-STAR BARN CLEANER
- 180 OSWALT MIXER
- MODEL 120 BELT CONVEYOR
- WEAVERLINE FEED CART



430 Concrete Ave.  
Leola, PA 17540  
717-656-2016

Building Cattle Facilities For  
The 21st Century!



477 East Farmersville Rd.  
New Holland, PA 17557  
(717) 355-2361



- H & J Bunks
- Hog & Cattle Slats
- Bunker Silos
- Concrete Hog Penning & Beams
- Concrete Post