

**Leola Produce Auction**

Leola, PA  
October 22, 1991

Report Supplied by Auction

APPLES: ASSORTED VARIETIES 3.25-5.00 ¼ BU.  
GREEN BEANS: 18.00-32.00 1 1/9 BU.  
YELLOW BEANS: 16.00-30.00 1 1/9 BU.  
LIMA BEANS: 18.00-26.00 1 1/9 BU.  
BROCCOLI: 4.50-8.00 12-14 CT.  
CAULIFLOWER: 1.00-1.40 HEAD.  
CABBAGE: GREEN 4.50-7.00 CRATE, 28-40 HEAD; RED 4.50-6.00 CRATE.  
CIDER: 1.50-1.75 GAL.  
EGGPLANT: 2.75-4.00 1 1/9 BU.  
ENDIVE: 4.00-6.50 10-12 CT. CRATE.  
NECTARINES: 6.00-8.50 ¼ BU.  
ORNAMENTALS: GOURDS .50-2.25 ¼ BU., INDIAN CORN LARGE SIZE 40-1.00 BUNCH, INDIAN FINGERS, SMALL SIZE .10-.35 BUNCH, JACK-BE-LITTLES 1.00-3.00 ¼ BU. #1, POTTED MUMS .85-1.30 EACH; FACE PUMPKINS SMALL TO MEDIUM .35-1.20 EACH AND LARGE TO EX. LARGE 1.25-2.50 EACH; BIG MACS 1.50-3.50 EACH; BABY PAMS .15-.25 EACH.  
ONIONS: 4.50-8.00 ¼ BU. DRY.

PICKLES: 3.75-9.00 ¼ BU.  
POTATOES: NEW RED AND WHITE 4.50-7.50 50 LBS. #1.  
PEPPERS: GREEN 3.75-6.50 1 1/9 BU., RED AND YELLOW 8.00-11.00 1 1/9 BU.; SUNTAN AND #2 2.00-4.00 1 1/9 BU.; HOT 1.75-2.50 ¼ BU.  
PEARS: SECKEL 4.50-9.00 ¼ BU.  
PUMPKINS: NECK .20-.45 EACH.  
RADISHES: 4.50-10.00 20-40 CT. BUNCH.  
RED BEETS: LOOSE 4.00-5.25 1 1/9 BU.  
SPINACH: 7.00-14.00 12-15 LB. CRATE.  
SWEET POTATOES: 8.00-12.00 1 1/9 BU.  
ACORN AND BUTTERNUT SQUASH: 3.00-5.00 1 1/9 BU.  
TOMATOES: LARGE TO EXTRA LARGE 18.00-35.00 25 LBS. #1, SMALL TO MEDIUM 7.00-15.00 #1.  
TURNIPS: 3.00-5.75 25 LB. POLYBAG.  
WINTER RADISH: 3.75-6.00 25 LB. POLYBAG.  
ZUCCHINI: GREEN AND YELLOW 4.00-10.00 ¼ BU.  
ENGLISH WALNUTS: 3.50-7.50 ¼ BU.  
NOTICE: SALE DAYS NEXT WEEK ARE TUES., THURS. AND FRI.

**Leinbach's Shippensburg Produce Auction**

(717)532-5511

Shippensburg, PA

Average Prices Of #1 Produce  
October 17, 19, and 22

Open 11 a.m. Tues., Thurs., Sat.

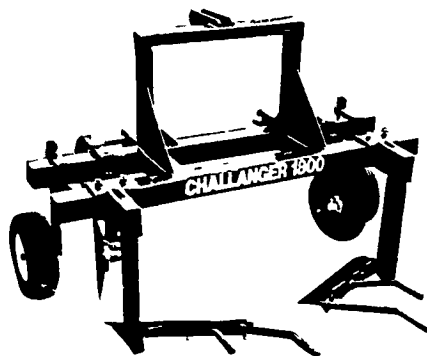
Report Supplied by Auction

APPLES: ALL VARIETIES 2.00-4.50 ¼ BU.  
GREEN BEANS: 3.00-7.00 ¼ BU.  
LIMA BEANS: 5.00-10.00 ¼ BU.  
BROCCOLI: 5.00-6.50 12-14 CT. BU.  
CAULIFLOWER: .75-1.30 HEAD.  
CABBAGE: 5.00-6.00 50 LBS.  
CIDER: 1.00-1.75 GAL.  
EGGPLANTS: 2.00-3.00 ¼ BU.

MUMS: .50-3.00 EACH.  
ORNAMENTALS: PAINTED FACE .50-5.00, MINI 1.50-5.00 ¼ BU., GOURDS 1.50-6.00 ¼ BU., INDIAN CORN LARGE .50-1.50 BUNCH, MINI OF ALL TYPES, STRAWBERRY, BLUES & BROWNS, WHITES AND ALL COLORS .20-.75 BUNCH, BABY PAMS .20-.50.  
PEPPERS: LARGE GREEN 4.00-8.00 1 1/9 BU., MEDIUM 3.00-6.00 1 1/9 BU.; RED AND YELLOW LARGE 8.00-12.00 1 1/9 BU., MEDIUM 4.00-6.00 1 1/9 BU.  
PEARS: 3.00-7.00 ¼ BU.  
PUMPKINS: FACE SMALL TO LARGE .25-3.50 EACH; NECK, GREEN STRIPE .20-.75, YELLOW .25-1.00 EACH; JUMBO .50-5.00 EACH.

ACORN, BUTTERNUT, SPAGHETTI SQUASH: 2.00-4.00 BU.  
RED BEETS: CUT 2.50-5.00 ¼ BU.  
SWEET POTATOES: 3.00-5.00 ¼ BU.  
TOMATOES: LARGE FANCY 10.00-14.50 25 LBS., MEDIUM FANCY 6.50-12.00 25 LBS.; LARGE #1 & 2 3.00-8.00 25 LBS., MEDIUM #1 & 2 3.00-6.00 25 LBS.  
TURNIPS: 2.00-5.00 ¼ BU.  
POTATOES: RED & WHITE .75-1.00 10 LBS., 2.50-3.50 ¼ BU., 4.00-6.00 50 LBS., 1.75-2.00 20 LBS.  
SHRUBS AND PLANTERS: LARGE 5.00-15.00 EACH.  
ENGLISH WALNUTS: 5.00-12.00 ¼ BU.  
CHESTNUTS: 3.00-5.00 8 QT. FLAT.

**CHALLENGER MODEL 1800  
PLASTIC MULCH LIFTER**

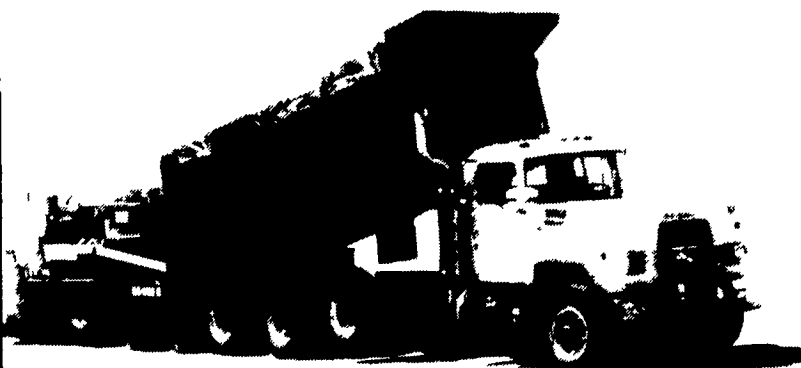


After your vegetable crop is over the Challenger is designed to retrieve the plastic mulch to the surface of the ground. Will lift plastics from 3 ft. to 5 ft. wide with fast and easy adjustments. On lifting plows, the farmer has choice of "Rock shears" or "Deep-suck shears" by Case International. Its heavy duty "C" springs on the disk coulters are designed to go over rocks and cut the toughest trash and vines which keeps from clogging. Has depth control wheels for constant depth control. Heavy shanks have ½" safety shear bolts. Auto-reset is optional. The best part of the Challenger is the price — it was designed with the small grower in mind — who doesn't want to invest a lot in removing his mulches. This year hitch to a Challenger and let it do that dirty job!

Call or write for free brochure and price list.



Mfg. By  
**RAIN-FLO IRRIGATION**  
884 Center Church Rd., East Earl, PA 17519  
Ph. (215) 445-6976



**Quality Asphalt Paving**

- Farms
- Driveways
- Parking Lots
- Streets



P.O. Box 161  
East Earl, PA 17519  
Phone (717) 355-9219

**Attention**

We Are Also Available For Grading,  
Stoning & Rolling Which Is The  
First Step In A Quality Paving Job.

For Estimates Call **717-355-9219**

**EVERGREEN TRACTOR CO., INC.**

**TRACTORS:**

JD 4040 Power Shift, Sound Guard,  
2300 Hrs., Sharp.....\$26,800  
JD 4240 PS, Sound Guard.....\$24,900  
Bobcat 743 Skid Steer Loader, Sharp.....\$10,900  
JD 3020 Diesel, Power Shift, Sharp.....\$8,950  
JD 7020 Duals, Cab, Air, PTO, 3 Pt. Sharp.....\$17,500  
Bobcat 643 Diesel Skid Steer Loader.....\$8,750  
AC WD w/2 Row Mounted AC Picker,  
Collectors Item.....\$1,500

**COMBINES & PICKERS:**

6620 Side Hill, turbo hydro, heater & air, monitor,  
spreader.  
NI 818 combine, sharp  
JD #343 3 Row 30" Corn Head.....\$3,650  
JD 4400 Diesel Rotary Screen Combine, Auto  
Header Heights, Air, Monitor, 23.1x26,  
and VS Feeder House  
JD 653 6 Row 30" Bean Head.....\$4,450  
JD 13' Quick Tach Rigid Grain  
Head.....\$1,850  
JD 4425 Combine, Nice  
JD 444 4 Row Wide Corn Head.....\$3,650  
JD 213 Rigid Head For Side Hill.....\$2,650  
NI 2 Row Wide w/Sheller.....\$1,850  
6 Row 1000 PTO Stalk Shredder.....\$2,450  
JD 443 Corn Head.....\$4,650  
JD #27 6 Row Stalk Shredder.....\$2,950  
UFT 6 Row Stalk Shredder 1000 PTO.....\$2,450

**MISCELLANEOUS:**

NH 352 Grinder-Mixer.....\$2,450  
JD 37 Loader, All Hydraulics For Utility.....\$1,850  
Donahue Implement Trailer.....\$1,850  
JD 45 Loader for 2 Cylinder Tractor.....\$750  
Transcraft 42' Drop Deck Trailer, Air  
Ride, Nice.....\$8,500  
Bobcat 907 Backhoe.....\$4,750  
Fruehauf 20' Steel Dump Trailer, Single  
Axle, For Grain.....\$1,850  
JD 48 Loader for Row Crop Tractor.....\$2,150  
JD 10' HD Front Dozer Blade.....\$2,150  
JD On-Land Hitch For 7B 2500 Plow.....\$1,200  
JD Tandem Drill Hitch.....\$475  
Martin Scavenger Spreader #1678.....\$4,750  
JD 148 Loader, Sharp.....\$2,850  
Bobcat 909 Backhoe.....\$5,250  
NI 243 Manure Spreader.....\$2,950

**DISCS AND FIELD CULTIVATORS**

JD 12' TWA Plowing Disc.....\$2,550  
JD 210 14' Black Gang Disc.....\$3,850  
IH 475 20' Hydraulic Wing Disc.....\$4,350  
JD 230 27' Wing Fold Disc w/New  
Blades.....\$7,850  
JD BWF 12' Disc.....\$1,850  
JD 12' Plowing Disc, Sharp.....\$3,450  
IH #45 12' Field Cultivator w/Tine  
Harrow.....\$1,850

**CULTIPACKERS**

Brillion 10' w/Big Shaft.....\$950  
Brillion 3' Section 28' Packer.....\$2,450  
Brillion 12' Packer, Big Shaft.....\$1,150  
JD 10' Packer.....\$1,050  
(1) Each Brillion 12' Packers  
w/Transport.....each \$1,250  
Brillion 12' w/Big Shaft.....\$1,250  
Brillion 12' Packer w/Transport.....\$1,850  
Brillion 16' Packer w/Transport.....\$1,850

**ROW CROP CULTIVATORS & ROTARY HOES**

JD 4 Row Front Mount Cultivator  
For 3020.....\$1,550  
JD RM 4 Row 30" Cultivator.....\$1,050

**Coming In...**

NI 213 Manure Spreader  
JD 1240 Plateless Planter  
Oliver 5 or 6 Bottom Spring  
Reset Plow

**Store Hours**

PARTS- Mon. Thru Fri.  
7:30 A.M. To 4:30 P.M.  
Sat. 8:00 A.M. To Noon  
SERVICE- Mon. Thru Fri.  
8:00 A.M. To 4:30 P.M.

**PLOWS-MOLDBOARD AND CHISEL:**

JD 7B 2500 Plow.....\$3,950  
JD 1450 6-16" Semi-Mtd. Plow.....\$2,250  
JD 4-16" F325 Auto Reset Plow.....\$1,250  
JD 2500 7x18" On-Land Plow.....\$5,400  
JD 1B Roll-Over Plow.....\$1,250  
IH 9 Tooth Pull Type Chisel.....\$1,850  
JD 2700 6B Auto Reset On-Land Plow.....\$7,450  
JD 10 Tooth Pull Type Chisel.....\$1,850  
JD 3200 6x18" Pull Type Auto  
Reset Plow.....\$3,950  
JD 2500 5x18" Auto Reset Plow.....\$3,950  
(New) JD 12' Chisel w/Walking  
Tandem.....\$3,450  
White 588 5-20" On Land **SOLD**.....\$4,850  
Brillion 3 pt. Deep Till.....\$3,500  
JD 1710A Mulch Tiller, 13 Shank, Sharp.....\$4,500  
JD F125 3x16 Plow.....\$950  
JD 4200 3B 18" Roll-Over Plow.....\$3,950  
JD 825 4B 18" Roll-Over Plow.....\$3,250

**ROLLER HARROWS AND CULTIMULCHERS**

IH #315 12' Roller Harrow.....\$2,850  
Brillion 15' Cultimulcher.....\$3,250  
Brillion 15' Roller Harrow.....\$3,850  
Kewanee 20' Flat Fold Roller Harrow.....\$5,950  
JD F950 12' Roller Harrow.....\$3,450

**PLANTERS & GRAIN DRILLS:**

JD 7000 Conservation 6 Row Liquid.....\$9,500  
JD Medel B 14x7 Double Disc Drill.....\$1,450  
JD 8300 18x7 DD Grain Drill.....\$3,450  
JD 7000 6 Row Liquid Fert. Attach.....\$1,500  
JD 4 Row Conservation Planter, Late  
Model, Sharp **SOLD**.....\$8,350  
(1) Each Complete JD 7000 Planter Units  
w/No-Till Coulters.....\$450  
JD 8300 21x7 DD Drill.....\$3,450

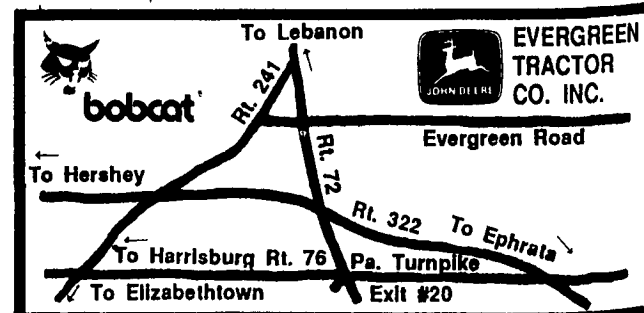
**HAY & FORAGE EQUIPMENT:**

JD 1 Row, Row Crop Attachment, Nice.....\$550  
JD 5 ½' Pickup Attachment  
NH 1010 Bale Wagon.....\$4,350  
NH 268 Baler w/Ejector  
JD #30 Hydraulic Bale Ejector.....\$1,500  
Heaton 1091 Mower Conditioner.....\$2,950  
JD 672 Hydraulic Drive Rake,  
Like New.....\$3,250  
JD 327 Baler w/#40 Ejector, Sharp.....\$7,950  
JD 1207 Mower Conditioner.....\$2,550  
Owatonna 320 Stacker.....\$1,550  
JD 1209 Mower Conditioner.....\$2,950

**ANNOUNCING  
THE AVAILABILITY  
OF USED PARTS FOR THE  
FOLLOWING MACHINES:**

- 7000 Planters
- 2500 Plows
- F350 Hydraulic Reset Plows
- Cultivator Parts
- Grain Drills
- Trip Plows
- Disc Harrows
- Roller Harrows (John Deere and Brillion)
- 35 and 3800 Harvesters
- Grain Platform
- Combine Corn Head

This is a partial listing.  
Please call for availability  
even if your machine  
is not listed.



30 Evergreen Rd., Lebanon, PA., (717) 272-4841 or Toll Free 1-800-441-4450