

Central U.S.

Carlot

Pork Report
October 16, 1991

Report supplied by USDA

CENTRAL U.S. CARLOT PORK REPORT FOB OMAHA BASIS INCLUDES MAJOR PRODUCTION AREAS IN MIDWEST AS OF 3 P.M. COMPARED TUESDAY'S 3:00 P.M. CLOSE: FRESH PORK LOINS .50-2.50 LOWER; BUTTS MOSTLY 1.00-4.00 LOWER; SKND. HAMS MOSTLY STEADY; SDLS. BELLIES STEADY TO .50 HIGHER. TRADE ACTIVE WITH MODERATE TO GOOD DEMAND AND MODERATE TO HEAVY SUPPLIES. NOTE: 1 LOAD 20-26 LBS. LINE-RUN HAMS TRADED EARLY AT 74.00.

**126.5 LOADS PORK CUTS
24.5 LOADS TRIM/PROCESS PORK PORK CUTS**

LOINS, REG., FRESH
14-18 LBS., * 30.0 LOADS, RANGE 102.00-105.00, WGHTD. AVG. 102.87.
1/2" TRIM 14-18 LBS., 30.0 LOADS, RANGE 118.00-123.00, WGHTD. AVG. 121.47.

18-22 LBS., * RANGE 105.00, WGHTD. AVG. 105.00 C.
1/2" TRIM 18-22 LBS., RANGE 126.00, WGHTD. AVG. 126.00 C.

LOIN,BLS CTRCT
5-7 LBS., 2.5 LOADS, RANGE 215.00-232.00, WGHTD. AVG. 222.40.

BNLS SIRLOIN
.75-1 LB., RANGE 160.00, WGHTD. AVG. 160.00 E.

TENDERLOIN
1.25/DN LBS., RANGE 365.00, WGHTD. AVG. 365.00 E.

**PICNIC, FRESH (COMBOS)
FOR SMOKER TRIM, RS**
6.0 LOADS, RANGE 55.00, WGHTD. AVG. 55.00.

BOSTON BUTT
4-8 LBS. * 9.0 LOADS, RANGE 61.00-65.00, WGHTD. AVG. 63.81.

1/2" TRIM 4-8 LBS., 9.0 LOADS, RANGE 78.50-83.50, WGHTD. AVG. 81.86.

COMBOS 8/UP LBS., RANGE 60.00, WGHTD. AVG. 60.00 C.

SPARERIBS, FRESH
1.5-3.5 LBS., RANGE 100.00-102.00, WGHTD. AVG. 100.88D.

LOIN BACKRIB (BOXED)

FRSH/FRZN
1.5/DN LBS., RANGE 210.00, WGHTD. AVG. 210.00A.

1.75/DN LBS., RANGE 200.00-210.00, WGHTD. AVG. 205.00 E.

1.75-2.00 LBS., 2.5 LOADS, RANGE 186.00-190.00, WGHTD. AVG. 186.80.

**LOIN BACKRIB (COMBOS)
FRSH/FRZN**
1.75/DN LBS., 0.5 LOADS, RANGE 205.00, WGHTD. AVG. 205.00.

HAM, SKINNED, SELECTED
FRESH 14-17 LBS., RANGE 85.00, WGHTD. AVG. 85.00 A.

FRESH 17-20 LBS., 2.0 LOADS, RANGE 76.00-78.00, WGHTD. AVG. 77.00.

FRESH 20-26 LBS., 28.0 LOADS, RANGE 70.00-74.00, WGHTD. AVG. 72.34.

HAM, SKINNED, COMMODITY
FRESH 14-17 LBS., UNQUOTED.

FRESH 17-20 LBS., UNQUOTED.
**BELLY, SDLS,
SKIN-ON, FRESH**

FRESH 10-12 LBS., 2.0 LOADS, RANGE 26.00, WGHTD. AVG. 26.00.

FRESH 12-14 LBS., 6.5 LOADS, RANGE 30.00-32.50, WGHTD. AVG. 31.81.

FRESH 14-16 LBS., 10.5 LOADS, RANGE 30.50-32.50, WGHTD. AVG. 31.79.

FRESH 16-18 LBS., 4.0 LOADS, RANGE 30.00-31.00, WGHTD. AVG. 30.25.

FRESH 18-20 LBS., 0.9 LOADS, RANGE 27.00, WGHTD. AVG. 27.00.

FRESH 20-25 LBS., 0.5 LOADS, RANGE 25.00, WGHTD. AVG. 25.00.

**PORK TRIMMINGS/
BONESLESS PROCESSING PORK
(CHEMICAL LEAN)**

COMBO 42% FRESH, 10.5 LOADS, RANGE 22.00-23.00, WGHTD. AVG. 22.90.

BOXED 42% FROZEN, RANGE 29.50, WGHTD. AVG. 29.50 D.

COMBO 72% FRESH, 10.0 LOADS, RANGE 52.00-56.00, WGHTD. AVG. 54.70.

BOXED 72% FROZEN, RANGE 64.00, WGHTD. AVG. 64.00A.

PICNIC CUSHION MEAT
COMBO 92% FRESH, UNQUOTED.

BOXED 92% FROZEN, UNQUOTED.
BONELESS PICNIC MEAT

COMBO 72% FRESH, 2.0 LOADS, RANGE 57.50-58.00, WGHTD. AVG. 57.75.

BOXED 72% FROZEN, 1.0 LOADS, RANGE 64.00, WGHTD. AVG. 64.00.

SKINNED JOWLS
COMBO FRESH, 1.0 LOADS, RANGE 17.00, WGHTD. AVG. 17.00.

BOXED FROZEN, RANGE 21.00-21.00, WGHTD. AVG. 21.00 A.

NOTE! (*)REFLECTS 1/2" TRIMMED PRODUCT BROUGHT BACK TO A REGULAR COMMODITY BASIS.

ABCDE AFTER QUOTES REPRESENTS DAYS SINCE LAST ACTUAL MARKET TEST. QUOTES ARE DROPPED AFTER 5 DAYS OF, NOT

TEST OR BEFORE IF THEY NO LONGER REFLECT CURRENT MARKET CONDITIONS.

**PORK CARCASS CUTOUT
WED., Oct. 16**

ESTIMATED GROSS CUTOUT VALUE OF A 175 LB. HOG CARCASS BASED ON USDA CUTTING YIELD TESTS AND CARLOT PRICES. WEDNESDAY'S CARCASS GRADES AND PRICES PER CWT.:

US#1 64.09, CHANGE FROM TUES. -0.80; US#2 61.89, CHANGE FROM TUES. -0.75; US#3 59.63, CHANGE FROM TUES. -0.70; US#4 57.47, CHANGE FROM TUES. -0.66.

TODAY'S CALCULATIONS FOR US #2 175 LB. PORK CARCASS:

HAM, SKINNED, 14-20 LBS., 21.01% OF CARCASS, 77.00 FOB VALUE, CHANGE FROM TUES. -1.00; LOINS, 1/2" TRIM, 14-22 LBS., 20.33% OF CARCASS, 121.50 FOB VALUE, CHANGE FROM TUES. -1.75.

BELLIES, SDLS, 12-14 LBS., 13.90% OF CARCASS, 31.50 FOB VALUE, -0.50 CHANGE FROM TUES.; SPARERIBS, 3.5DN LBS., 3.03% OF CARCASS, 101.00 FOB VALUE.

PICNICS, 8-12 LBS., 10.31% OF CARCASS, 39.25 FOB VALUE, CHANGE FROM TUES. -1.25; BUTTS, 1/2" TRIM, 4-8 LBS., 7.25% OF CARCASS, 82.00

FOB VALUE, CHANGE FROM TUES. -1.25.

JOWL, 2.85% OF CARCASS, 18.00 FOB VALUE; NECKBONES, 1.52% OF CARCASS, 12.00 FOB VALUE.

FEET, 1.05% OF CARCASS, 15.00 FOB VALUE; TAILS, 0.22% OF CARCASS, FOB VALUE 33.00.

TRIM 72%, 2.19% OF CARCASS, 55.50 FOB VALUE, CHANGE -1.50; LARD, 10.85% OF CARCASS, 13.25 FOB VALUE.

TOTAL CARCASS 94.51%. US#2 CARCASS VALUE PER CWT. 61.89. NOTE: VALUE MAY CHANGE WITHOUT ADEQUATE TEST.

**Lebanon Valley
Livestock Auction**

Fredericksburg, Pa.

Tuesday, October 15, 1991

Report Supplied by PDA

REPORT FOR OCTOBER 15, 1991 NOT AVAILABLE. HEADAGES ARE: CATTLE 152; CALVES 222; HOGS 111; SHEEP 16; GOATS 3.

**FOR SALE
SHAVINGS
& SAW DUST**

- ★ Delivered To Your Location
- ★ Year Round Supply
- ★ Excellent for Dairy or Horses

Call For Price To Your Area
717-653-5935

J.D. Martin inc.

Mt. Joy, PA

**HOOVER'S
HAY
AUCTION**

2nd & 4th
Fridays Of
Each Month
12 Noon

Located in Dauphin Co., 1 mile east of Getz, along Rt. 25.

Gerald Hoover,
#AU-002794L
717-365-3803



Every Wednesday
At 11:00 A.M.

GOOD'S AUCTION
111 Maple Ave.
Leola, PA 17540
717-656-8911
717-656-9554

Annual Dairy Show & Sale

Wed., Oct. 30, 1991

Judging 9 A.M.

Sale 11:00 A.M.

Show Winners 12 Noon

All Show Cows Sell

**NEW HOLLAND SALES STABLES INC.
THE ACTION AUCTION**

Horse Sale

Fri., Nov. 8 - 7:00 P.M.

Tack 6 P.M.

Horses Hitched 12 Noon

LIVESTOCK IS OUR ONLY BUSINESS

MONDAY

SLAUGHTER HOGS



EARLY BIRD HOG SALE

8:00 A.M.

Sell Your Hogs At New Holland Sales Stables, Inc.
See them weighed, sold and pickup your check.

10:00 AM



HORSES

MULES



1:30 PM

BEEF SALE



SHEEP

GOATS

CALVES



WEDNESDAY

HEIFER SALE

11:00 AM

COW SALE 12:00 NOON

**HEIFERS
BULLS**



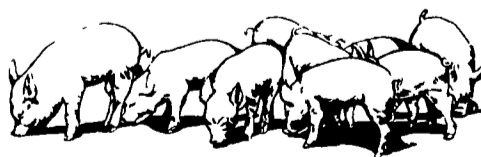
**DAIRY
COWS**

We have the usual run of 50 to 100 Heifers, all ages. Loads of fresh cows and springers from our regular shippers.

Also some local fresh cows and springers.

1:30 P.M.

FEEDER PIG SALE



Pigs are accepted after 6:30 A.M. State graded from 8 to 12 Dairy Barn and Feeder Pig Barn are cleaned and disinfected weekly for your protection.

THURSDAY

Beef Auction

10:00 A.M.

**BULLS
STEERS
BEEF COWS**

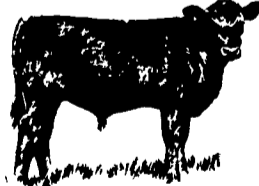


1:00 P.M.

STOCKERS

&

FEEDERS

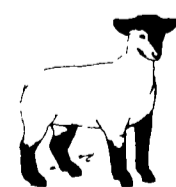


12:00 NOON

SHEEP

GOATS

CALVES



NEW HOLLAND SALES STABLES, INC.

12 Miles East of Lancaster Off Route 23, New Holland, Penna.

MANAGERS

Norman & David Kolb - 717-397-5538

Field Representatives

Luke Eberly - 215-267-6608 738-1865

Homer Eberly - 215-267-3047

Ron Ranck - 717-656-9849

Sale Barn Office Manager

Roger Floyd - 717-354-4341

FAX # 717-355-0706

Order Buyer

Paul Good - 215-445-6662