

Increase Use Of Newspaper Bedding

UNIVERSITY PARK (Centre Co.) — The Penn State Cooperative Extension has completed a second annual survey on the use of newspapers as animal bedding.

The surveys show that between 1990 and 1991 Pennsylvania farmers increased their use of newspaper for bedding by 28 percent. The results also indicate that 29 newspaper publishers were involved in providing or encouraging the use of newsprint for livestock bedding.

The 53 Penn State Cooperative Extension agents who responded to the 1991 survey estimated that 733 herds with a total of 58,383 head of cattle were using newsprint. The agents indicated that beef cattle, horses, sheep and hogs also were bedded with newsprint.

The agents estimated that 68 percent of the farmers used their own chopping or shredding equipment. This may indicate that farmers are willing to chop or shred their own newspaper bedding in areas without centralized facilities to provide it.

Three main methods are being used to get old newsprint from curbside collection to the barn in a useable form.

In the central part of the state many farmers now place a small truck, cart, or shed at the end of their lane. Neighbors and townspeople place their paper in the facility. The farmers feel that by taking the newsprint from their neighbors or friends they are doing a good deed, while the neighbors and friends feel they are helping the farmers out. This appears to be a good example of "farm-city" cooperation. In Union County the number of carts, sheds, and trucks has doubled in the past year.

Lebanon County used another innovative method. On a designated Saturday each month people bring their newspapers to a recycling site on the county courthouse parking lot. Cooperative Extension agent Ken Winebark, via meetings and newsletters, invites farmers who use newspaper for bedding to bring their truck or wagon to the site. County prison workers help to transfer the newsprint from recycling trucks to handle any paper the farmers don't take, then offers its customers the excess paper.

In the northern part of the state, the Northern Tier Solid Waste Authority provides

waste collection services to Bradford, Tioga and Sullivan Counties. Newspaper collected by the authority

is chopped and baled at two facilities in the areas, then sold to area farmers. Manager Dave

Terrill indicates that he can't supply all the chopped paper farmers want.

Maryland DHIA

(Continued from Page A41)

WASHINGTON COUNTY

HERD NAME	HERD BREED	COWS IN HERD T	MILK AVG FCM T
LYNN STRITE	H	54	73.9
DWAYNE & MIRIAM BELL	H	33	73.4
OWEN E MARTIN	H	10	72.7
DWAYNE & MIRIAM BELL	Br. Swiss	48	69.4
KENLIN MARTIN	H	54	66.8
SUNRISE VIEW FARMS	H	100	65.8
AFTON SPRING DAIRY	H	67	64.9
GILSON R. MARTIN	H	44	64.5
EDGAR PAUL PRYOR	H	95	64.3
JOHN & CINDY BURTNER	H	35	63.5
BARNHART BROTHERS	H	56	63.2
MARSH-HAVEN FARM	H	93	62.8
CURTIS W AUSERMAN	H	140	62.7
ARJUBELL FARM	H	131	62.3
ROY J. BYERS	H	33	61.8
EARL GROVE JR	H	118	61.4
CREEK BOUND FARM	H	86	61.3
MARTIN, TRUMAN	H	108	60.7
ARTHUR RHODERICK	H	205	60.0

TALBOT COUNTY

HERD NAME	HERD BREED	COWS IN HERD T	MILK AVG FCM T
H W SNOW JR & SON	H	58	63.6

POTOMAC VALLEY ASSOC.

HERD NAME	HERD BREED	COWS IN HERD T	MILK AVG FCM T
CALVIN P. DAYTON	H	67	70.0
BROOKDALE HOLSTEINS	H	79	69.1
CESSNA BROS.	H	50	60.5

HERD NAME	HERD BREED	COWS IN HERD T	MILK AVG FCM T
THOMAS & SHIRLEY JACKSON	H	46	76.7
PINTAIL POINT FARM	H	92	71.1
HARRY L SCHRADER&SONS	H	167	67.9
CHARLES R PATTERSON	H	115	66.5
BOONE BROTHERS	H	130	62.0
MCFARLAND DONNIE & WAYNE	H	120	61.7
L J & W E PALMATARY	H	179	61.2
DONALD W. SKINNER	H	77	60.4

CLEARANCE Sale

All Simplicity Lawn & Garden Products at Factory Invoices

IN STOCK



SAVE UP TO \$2,000

FINANCING AVAILABLE Buy Now, Pay Later

PNEUMATIC MAILERS & STAPLERS • CONSTRUCTION EQUIP

LEROY'S REPAIR & RENTALS

SALES - SERVICE - RENTALS

717-768-8788

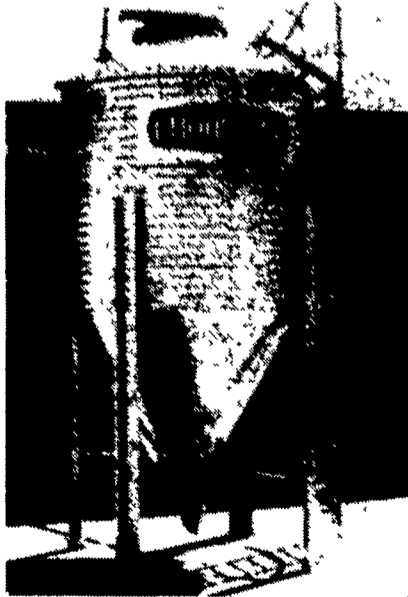
LAWN & GARDEN EQUIPMENT • ELECTRIC TOOL SERVICE

"If You're Not Shopping at Leroy's You May Be Paying Too much!"

48 Quail Road, Intercourse • 717-768-8788

BINS & AUGERS

CHORE-TIME AND **FLEX AUGER**
FEED BINS
Your Best Buy



We Will Assemble And Deliver Bins To Your Farm!

The feed bin is the very heart of any feeding system. If the bin lets you down, the system quits.

That's why we put so many quality features into our complete line of feed bins - which includes 6-foot diameter steel or polyethylene (great for H.M. com), 6-foot, 7-foot, and 9-foot models. All are available in several capacities - so you have a wide selection of bins to fit your needs.

Here are just a few of the quality features that make our bins such an outstanding buy:

- Sturdy Ladder System
- All Bin Seams Are Double Caulked
- Choice of 16 or 25 Inch Hopper Opening
- All Galvanized Steel Parts

We Stock Truckloads Of Chore-Time Bins & Miles Of Chore-Time FLEX-AUGER

CALL OUR TOLL FREE CUSTOMER SERVICE NUMBER: 1-800-673-2580

Authorized CHORE-TIME Master Distributor



NORTHEAST AGRI SYSTEMS, INC.
 FLYWAY BUSINESS PARK
 139 A West Airport Rd
 Lititz, PA 17543
 (717) 569-2702



STORE HOURS
 Mon-Fri 7:30-4:30
 Sat. 7:30-11:30

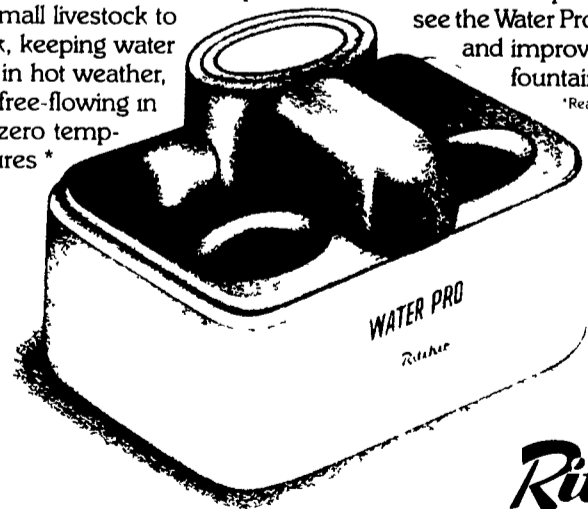
Durable Energy-Free Water Pro From Ritchie

The new and improved Ritchie® Water Pro™ is the durable answer to energy-free watering on your lot

The patented pulley/cable drink closure makes it easy for small livestock to drink, keeping water cool in hot weather, and free-flowing in sub-zero temperatures *

The new Water Pro is constructed from impact resistant plastic and uses no electricity, so it eliminates heating elements and utility bills! Plus, it's easy to install and service. Stop by and ask to see the Water Pro — the new and improved energy-free fountain from Ritchie

*Read instructions for proper installation



RELAX
Ritchie
 WATERS EM RIGHT
 70 years of quality products and service

- Easy To Clean
- 5 Energy-Free Models To Choose From

NOW AVAILABLE EF1 RITCHIE SINGLE HOLE ENERGY FREE UNIT

RYDER SUPPLY CO.

P.O. Box 219
 Chambersburg, PA 17201-0219
 Phone 717-263-9111