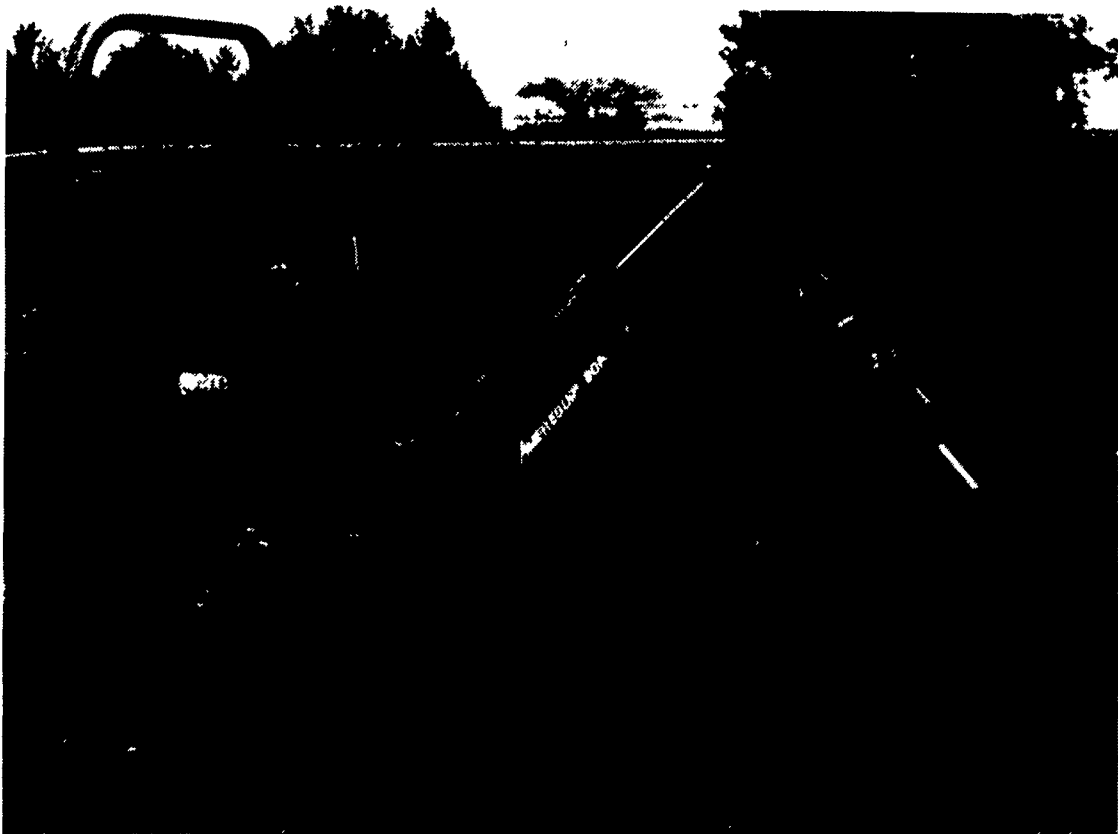


## Bearing Area Increased On Backhoe



EPHRATA (Lancaster Co.) — Amerequip Corporation introduces the new, stronger, more powerful Model 80A backhoe.

The new Amerequip Model 80A backhoe has 25 percent greater digging power and 20 percent more back filling power. The bearing area on the new Model 80A backhoe has been increased at key pivot points to lengthen the lifetime of the device. A complete new line of heavier buckets has been added to compliment the new backhoe.

For additional information, and the name of your local dealer, contact Hamilton Equipment, Inc., 567 South Reading Road, Ephrata, PA 17522, (717) 733-7951.

## PDA Offers Low Interest Loans For Improving Agriculture

HARRISBURG (Dauphin Co.) — State Agriculture Secretary Boyd E. Wolff this week advised farmers and processors that they can apply for low-interest loans through a program that promotes the use of new technology in Pennsylvania.

Applications to the Agricultural Technology Loan Program (ATLP) will be accepted from Oct. 15 through Dec. 31.

"This program represents a tremendous opportunity for Pennsylvania farmers to take advantage of leading edge technology designed to increase efficiency and productivity," Wolff said. "It's another

part of our ongoing effort to support and promote agriculture, our number one industry."

Matching loans of up to \$50,000 are available at an interest rate of half the federal discount rate. Last year's loan rate was 3.5 percent.

Farmers demonstrating the greatest need and proposing the most innovative use of technology will be awarded the low-cost loans for projects that will increase productivity or provide entry into new product areas.

Farmers can apply for the loans by contacting Chris Herr in the Bureau of Agricultural Development at (717) 783-8460.

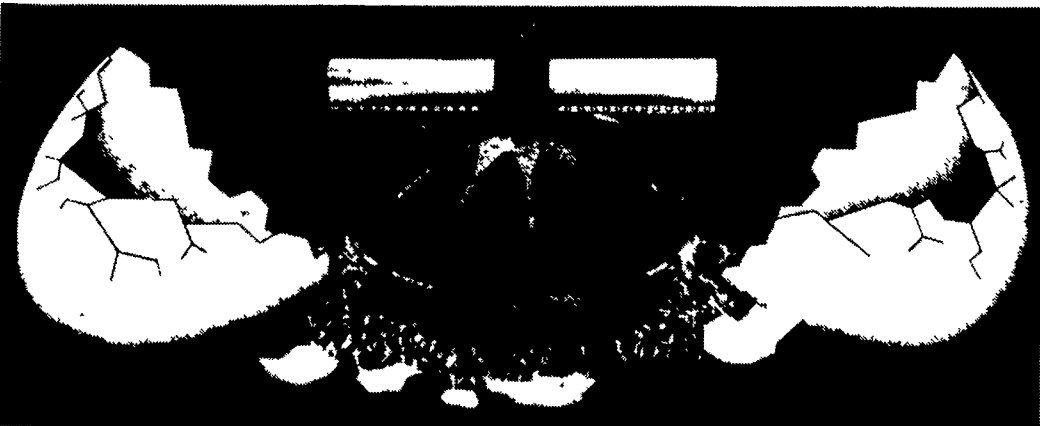
We're Hog Wild About  
**Our PORK**  
 PRODUCERS



## INTRODUCING THE NEW GENERATION FROM CHORE-TIME: MODEL C2



We've "crossed" our famous Model C with our innovative Model 2000



...the "offspring" gives you all the outstanding benefits of both "parents"

Windows Open Automatically When Feeders Are Lowered And Can Be Locked Open On Uneven Floors - Windows Close Automatically When Feeders Are Closed.



New Grill Design Lets Birds Out As Easy As They Go In.



SNAP-TOP™ 2-Piece Grill Support Option Allows You To Conveniently Update Old Conventional Feeder Systems Without Taking Apart Auger Tubes.



Pennsylvania's Only Authorized Distributor Of **CHORE-TIME** Poultry Feeding Systems And **SWISH** Watering Systems!



CONTRACTS AVAILABLE FOR NEW/UPDATED BROILER, BREEDER, PULLET, TURKEY AND LAYER HOUSES  
 For Your Remodeling Needs, Nipple Watering, Feeding Or Ventilation Equipment — CALL US!



## NORTHEAST AGRI SYSTEMS, INC.

FLYWAY BUSINESS PARK  
 (717) 569-2702

139 A West Airport Rd.  
 Lititz, PA 17543

TOLL FREE CUSTOMER SERVICE NUMBER:

**1-800-673-2580**

