

**Central U.S.**

**Carlot**

**Beef Report**

October 9, 1991

Report supplied by USDA

CENTRAL U.S. CARLOT BEEF REPORT (INCLUDES THE MAJOR PRODUCTION AREAS IN THE MIDWEST AND TEXAS) AS OF 3 P.M. COMPARED TO WEDNESDAY'S 3 P.M. REPORT: BULL CARCASSES STEADY. UTILITY COW CARCASSES MOSTLY STEADY WITH CUTTER 2.50-4.00 LOWER THAN LAST TEST. DEMAND FAIRLY LIGHT WITH OFFERINGS LIGHT TO MODERATE.

**COW & BULL CARCASSES**  
**FOB OMAHA BASIS**  
**15 LOADS REPORTED**

UTBRK 2-4, 4 LOADS, RANGE 80.00-81.00, LATEST ESTB. MKT. 80.00-81.00.

UT, BNG 1-3, 400 AND UP, 6 LOADS, RANGE 84.00-85.50, LATEST ESTB. MKT. 84.00-85.50.

CUTTER 1-2 350 AND UP, 4 LOADS, RANGE 92.50-94.00, LATEST ESTB. MKT. 92.50-94.00.

BULLS 500/UP YG1, 1 LOAD, RANGE 108.00, LATEST ESTB. MKT. 108.00.

**BONELESS PROCESSING BEEF/**  
**BEEF TRIMMINGS**

**151 LOADS REPORTED**

BONELESS PROCESSING BEEF WEAK TO 2.00 LOWER MANY 1.00-1.50 LOWER ON 90% WITH OTHERS NOT TESTED. DEMAND FAIRLY LIGHT ON LIGHT TO MODERATE OFFERINGS. BEEF TRIMMINGS LOWER ON MODERATE DEMAND AND MODERATE TO HEAVY OFFERINGS.

**FOB OMAHA BASIS**

90%FR, 20 LOADS, RANGE 123.5-125.5, WT. AVG. 124.40.

90%FZ, UNQUOTED.

85%FR, UNQUOTED.

85%FZ, UNQUOTED.

75%FR, RANGE 100.0, WT. AVG. 100.33D.

75%FZ, UNQUOTED.

65%FR, UNQUOTED.

65%FZ, UNQUOTED.

50%FR, 76 LOADS, RANGE 36.00-39.00, WT. AVG. 37.55.

50%FZ, 17 LOADS, RANGE 42.00-44.00, WT. AVG. 42.88.

50%BX, 14 LOADS, RANGE 41.00, WT. AVG. 41.00.

BULL 92-94, RANGE 150.0, WT. AVG. 150.00A.

**FOB EAST TX & OK**

90%FR, 20 LOADS, RANGE 123.5-124.5, WT. AVG. 124.00.

90%FZ, 4 LOADS, RANGE 126.0-127.5, WT. AVG. 126.63.

85%FR, 85%FZ, 75%FR, 75%FZ, 65%FR, 65%FZ AND BULL 92-94 UNQUOTED.

**CAF NORTHEAST AREAS**

90%FR, RANGE 126.0, WT. AVG. 126.00 D.

90%FZ, 85%FR, 85%FZ, 75%FR, 75%FZ, 65%FR AND 65%FZ, ALL UNQUOTED.

\*\*ABCDE AFTER QUOTES REPRESENTS DAYS SINCE LAST ACTUAL MARKET TEST. QUOTES ARE DROPPED AFTER 5 DAYS OF NOT TEST OR BEFORE IF THEY NO LONGER REFLECT CURRENT MARKET CONDITIONS.\*\*

**Oklahoma City**  
**Feeder Cattle**

Oct. 9, 1991

COMPARED WITH LAST WEEK: FEEDER STEERS AND HEIFERS WEAK TO \$2.00 LOWER. STEER AND HEIFER CALVES \$1.00-\$4.00 LOWER. YEARLING DEMAND FAIR TO MODERATE. CALF DEMAND LIGHT, ESPECIALLY FOR FLESHY UNWEANED CALVES. WHEAT PASTURE NOT YET READY FOR GRAZING AND CURRENT HEDGING LEVEL MAKES FOR FEWER GAMBLERS. OVERALL THE MARKET WAS A LACKLUSTER AFFAIR AS FLUCTUATIONS IN THE SLAUGHTER CATTLE MARKET HAS BUYERS CONFIDENCE LEVELS AT A LOW EBB. SLAUGHTER COWS CLOSED \$3.00-\$4.00 LOWER. SLAUGHTER BULLS \$2.00-\$4.00 LOWER. RECEIPTS THIS WEEK 9,975; LAST WEEK 10,468; LAST YEAR 9,974. SUPPLY INCLUDES 57% YEARLINGS; 36% CALVES & STOCKERS UNDER 600 Lb. 7% COWS & BULLS. BULK PRICE RANGES FOLLOW:

FEEDER STEERS: MEDIUM & LARGE FRAME 1, 350-400 LB. \$111.00-\$117.00; 400-450 LB. \$104.50-\$114.00; 450-500 LB. \$96.50-\$104.00; 500-550 LB. \$94.00-\$98.00; 550-600 LB. \$89.50-\$96.50; 600-700 LB. YEARLINGS \$86.00-\$91.50, CALVES \$84.75-\$89.50; 700-800 LB. \$82.00-\$88.00; 800-875 LB. \$80.75-\$84.00; 925-975 LB. \$75.00-\$79.50. LARGE FRAME 2

**Lancaster Farming, Saturday, October 12, 1991-A15**

**Dewart Livestock**

Dewart, PA

Oct. 7, 1991

CATTLE 90...PDA...Compared with last Monday's market: Slaughter cows 1.00 to 2.00 lower. Couple Select slaughter steers 66.00 and 66.50. Few Standard and Select sl. heifers 57.00-59.25. Few Breaking Utility & Commercial sl. cows 46.50-49.50, Cutter & Boning Utility 45.00-48.75, Canner & Low Cutter 39.00-44.00, Shells down to 35.00. One Yield Grade No. 1, 1890 lbs. sl. bull 60.25, few No. 2, 1075/1920 lbs. 52.00-55.75. Feeder Cattle: Few Medium Frame No. 1, 250/500 lbs. steers 81.00-90.00.

CALVES 128...One Prime vealer 110.00, one CHOICE 99.00, few Standard & Good 70/95 lbs. 70.00-85.00. Farm Calves: Holstein Bulls No. 1, 90/125 lbs. 150.00-200.00, No. 2, 85/125 lbs. 100.00-140.00; Hol. Heifers 80/100 lbs. 140.00-155.00. Few beef cross 65/100 lbs. bulls and heifers 110.00-175.00.

HOGS 47...Few US 1-3 220/225 lbs. barrows and gilts 46.25-47.50. US No. 1-3 350/615 lbs. sows 37.00-41.00. Few Boars 31.25-35.00.

FEEDER PIGS 70...Few Lots US No. 1-3 20/40 lbs. feeder pigs 16.00-29.00 --- all per head.

SHEEP 10...Few Choice 60/115 lbs. wool slaughter lambs 47.00-52.00. - all per hundredweight basis.

GOATS 0...No Market Test.

**Lebanon Valley**  
**Livestock**

Fredericksburg, PA

Oct. 8, 1991

CATTLE 116...PDA...Compared with last weeks market: Slaughter cows weak to mostly 1.50 to 3.00 lower. One Choice slaughter steer 66.00; few Select Holsteins 59.25-62.75, few Standard Holsteins 55.75-60.00. Few Select Holstein heifers 58.00-62.75, few Standard Holsteins 48.50-54.25. Few Breaking Utility & Commercial sl. cows 46.50-48.50, Cutter & Boning Utility 44.50-49, few to 50.75, Canner & Low Cutter 38.00-44.50, Shells down to 31.00. Few Yield Grade No. 1, 1390/1560 lbs. sl. bulls 59.75-66.50.

CALVES 231...Standard and Good 70/95 lbs. vealers 82.00-95.00, Utility 60/80 lbs. 70.00-80.00. Farm Calves: Hol. Bulls No. 1, 85/125 lbs. 150.00-181.00, No. 2, 80/125 lbs. 95.00-145.00; Hol. Heifers No. 1, 85/115 lbs. 130.00-197.00, few down to 92.00. Few Beef cross 75/95 lbs. bulls and heifers 117.00-175.00.

HOGS 135...Barrows and gilts: about steady. Few lots US No. 1-2 230/250 lbs. 48.50-48.75, one lot 1-3 250 lbs. 47.85. Sows: US No. 1-3 400/620 lbs. sows 38.75-41.75. Few Boars 35.00-36.25.

FEEDER PIGS 0...No Market Test. - all per head.

SHEEP 3...No Market Test. - all per hundredweight basis.

GOATS 0...No Market Test. - all per head

**Belleville Livestock**

Belleville, PA

Oct. 9, 1991

CATTLE 112... REPORT IS SUPPLIED BY THE AUCTION ...Compared with last Wednesday's market: Utility slaughter steers 52.50-55.50. Breaking Utility and Commercial slaughter cows 48.00-50.00, couple 51.50, Cutter and Boning Utility 44.00-49.00, Canner and low Cutter 40.00-44.85, Shells down to 35.50. Yield Grade No. 1, sl. bulls 56.00-58.25. Feeder Cattle: Few Steers 75.00-80.00. Heifers 41.00-57.00.

CALVES 124...Standard and Good vealers 81.00-89.00, Utility 66.00-78.00. Farm Calves: No. 1, Holstein bulls 140.00-182.50, No. 2, 100.00-132.50.

HOGS 149...US No. 1-2 220/250 lbs. barrows and gilts 47.75-48.75, 1-3 200/280 lbs. 44.25-46.25. US No. 1-3 sows 36.50-40.00, 2-3 33.50-36.00. Boars 28.00-33.50.

FEEDER PIGS 225...US No. 1-3 feeder pigs 16.00-34.00 --- all per head.

SHEEP 24...Wooled slaughter lambs: Choice 44.00-46.00, few light 68.00-74.00 Slaughter sheep 17.00-18.00. - all per hundredweight basis.

GOATS 22...21.00-54.00 --- all per head. HOLSTEIN DAIRY COWS - \$610.00-\$1400.00 - PER HEAD.

**LIVESTOCK TRUCKING**  
**WINTER SPRING FARM**

H. Charles and Joan Hoffman  
Brodheads ville, PA

Licensed, Bonded and Cargo Insured  
Order Buying. Weekly trips to  
Leesport, New Holland, Lancaster.

**(717) 992-6295**

Also down cattle removal.

**HAY, STRAW**  
**& GRAIN SALE**

Every Thursday at 1 p.m.  
Auction will continue  
all year long

**Vintage Sales**  
**Stables, Inc.**

(Rt. 30, 10 miles east of Lancaster  
in Paradise, PA)

For info. L. Robert Frame, Sr.  
717-442-4181 business president  
215-458-8518 home Glenn S. Frame  
Mgr.

**MARTIN**  
**MACHINERY**



**GENERATORS**

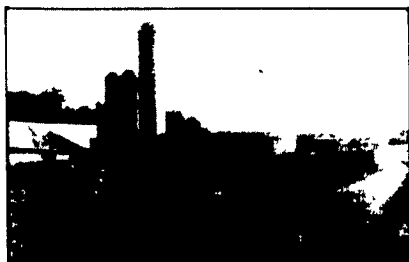
Sales ★ Service ★ Rentals  
\* Complete Generator Systems  
\* PTO \* Portables \* 2-1600 KW  
"We Service It If You Have It  
And Sell It If You Need It"

34 W. Mohler Church Rd.  
Ephrata, PA 17522

Tel: 717-738-0300  
Fax: 717-738-4329

**POURED SOLID CONCRETE STORAGE SYSTEMS**

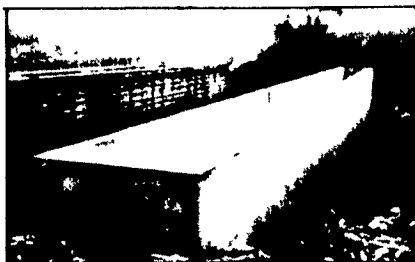
17 Years Experience In Pouring Concrete Manure Pits!



Above-Ground Liquid Manure Tank  
For Dairy Operation - 235,000 Gal.

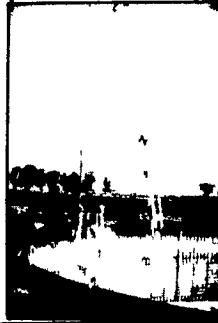


In-Ground Liquid Manure Tank  
For Hog Operation - 324,000 Gal.



Hog House-Liquid Manure Pit

Construction  
Of In-Ground  
Liquid  
Manure Tank-  
425,000  
Gallons.



**CONCRETE PUMPING**  
**SERVICE AVAILABLE**



Mixer And Boom Trucks



92' Boom Placing Concrete



Placing Concrete On Site

Take the questions out of your new construction.  
Call Balmer Bros. for quality engineered walls.

All sizes  
available  
round  
or  
rectangular

Invest in Quality - It will last a lifetime.

**Balmer Bros.**

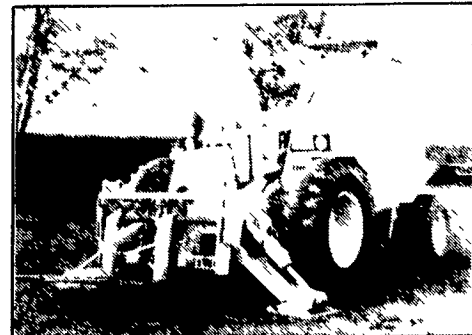
CONCRETE WORK, INC.

243 Miller Road  
Akron, PA 17501

(717) 733-0353  
6:30 AM - 3:30 PM

(717) 859-2074  
After 6:00 PM

**a power pro**  
**SPECIAL OFFER**



**1986 JCB 530B**

- 2,650 Hours
- Diesel engine
- 2 Flat Forks
- 36' Lift
- 4-Wheel drive
- Stabilizers
- Cab
- Service records available

**NOW! \$24,500**

**CALL TOLL-FREE**

1-800-322-2228  
or (717) 354-4241

**power pro equipment**