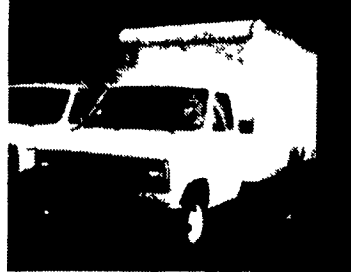




86 FORD E-350 1 TON VAN, 6 Cyl, 300 Eng, AT, AC, PS, PB, PA Insp \$6,500



86 FORD E-350 VAN, 10,000 GVW, One Owner, PA State Insp, Duralite 12 Ft. FRP Body, w/Roll-Up Door, 2 In Stock \$6,500 ea.



78 R-MODEL MACK 5 Spd., 300 Eng, AC, New Paint, PS, PA Insp., 1 Owner



'79 INT'L 345 Gas, Rebuilt, 5 Spd., 20 Ft Morgan Body, Like New, PA Insp.



'81 MACK MIDLINER MS200, PA Insp, Will Take Up To 20 Ft Body, Quality Truck!



'71 Int'L LOADSTAR, PA Insp, 35,000 Mi on Rebuilt Eng, Nice Truck

**CHARTER ENTERPRISES LTD**

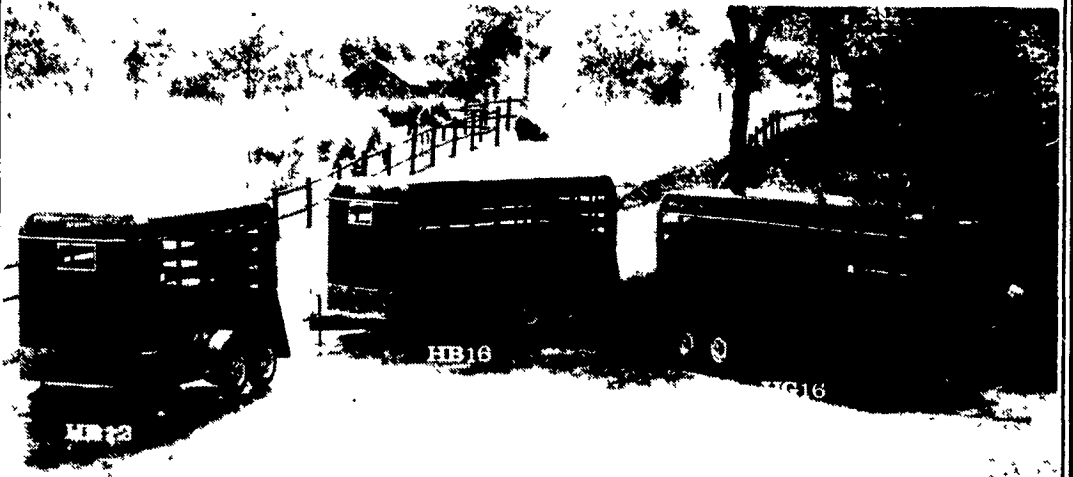
*Used Truck Sales*

988 Stoney Battery Road Lancaster, PA 17601

CALL (717) 898-0683



★★★★ TRAILER ENTERPRISES ★★★★★  
IS BUILDING A REPUTATION

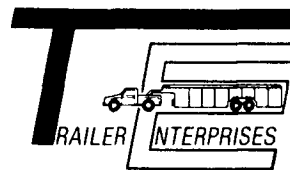


From Livestock Transport - to - Heavy Industrial Moving.. We serve **YOU!!** Call **NOW** and give us the opportunity to help, with **ALL** Your Trailer Needs! Financing and Leasing To Qualified Buyers. Trailer Enterprises is also your area distributor for Owens heavy-duty car dolly.

**HORSE \* STOCK \* GOOSENECK \* FLATBEDS \*  
INDUSTRIAL \* UTILITIES OF ALL KINDS \***

*Revvin to take care of ALL your trailer needs*

120 Pine Drive  
Greencastle, PA 17225  
Phone 717-597-5611



James D. Martin  
Owner

WE ARE  
30 MIN. from HARR.  
30 MIN. from LANC.  
30 MIN. from READING  
45 MIN. from YORK

RTE. 422,  
2300 WEST  
CUMBERLAND ST.,  
LEBANON, PA



717-274-2000

(Across From The  
Boscov's Mall)

FAMILY OWNED  
&  
OPERATED FOR  
22 YEARS

**THIS IS JUST A SMALL PORTION OF OUR HUGE INVENTORY**



89 Ford E-350 Cube Van 351 f.i., auto, A/C, 14 Foot Aluminum Box, Dual Rear Wheels



89 GMC C-30 Stake Body Dual Rear Wheels, 12 Foot Body 350 V8, Auto, 21,000 Miles



4 Wheel Drive 90 Ford F-350 4 Door Crew Cab Dually XLT Lariat, Centurion Packing, 460 F.I. Auto, A/C, Trailer Tow Pkg.



90 Ford F-250 Super Cab 4x4 Trailer Tow Special, 351 f.i. Auto, A/C, 20,000 Miles



4x4 88 Ford F-250 300 F.I. 5 Sp. Overdrive, Real Clean \$8,995



Dump Truck, 79 Dodge Club Cab Contractor's Bed, V8, 4 Spd.



Diesel Extend Cab, 90 Ford F-350 Dually, 7.3 Diesel, 5 Spd., A/C, 20,000 Miles, Factory Warranty, Very Nice



Diesel 6 Wheel Drive, 89 Ford F-350 Cab & Chassis, 7.3 5 Sp, O/D, 16,000 Miles, 60" Cab To Axle, 137" Wheel Base



Diesel 4x4 83 Chevy C-10 V8, Auto



Cab & Chassis, 2 Wheel Drive 86 F-350 Diesel, 4 Spd, 137 W.B. 60 C/A; 85 F-350 Diesel, 4 Spd, 161 W.B., 84 C/A



85 Dodge 4 Door Crew Cab 360 Auto, Trailer Tow Pkg., New Insp.



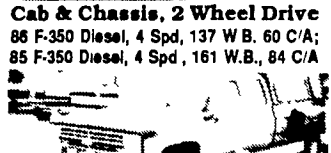
4x4 Toy 86 Toyota 3" Body Lift, Roll Bar, Custom Wheels



Dually 4x4 85 Ford F-250 460, 4 Spd., A/C, Runs Strong



Diesel Power 90 Ford F-350 Crew Cab Dually 7.3 Auto, Trailer Tow Special



87 Chevy C-30 4 Door Dually Beautiful, 30,000 Original Miles, 454 Auto, Trailer Tow Package, Dual Tanks, It's Perfect



4 Wheel Drive, 89 Ford F-150 XLT Lariat 16,000 Miles, 302 f.i. auto, A/C, Dual Tanks, Fiberglass Cap



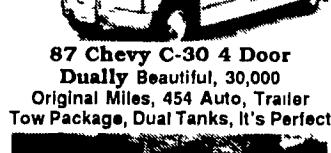
Big Dually 88 Chevy 3500 Extend Cab 454, Auto, A/C, 31,000 Miles



Diesel Power 4 Wheel Drive 89 Ford F-250 Super Cab, XLT Lariat, 7.3 Auto, A/C, 33,000 Miles



67 International Cab-Over 125" Wheel Base, 108 Cab To Axle, 19 500 GVW \$1,995



88 Chevy C-30 Stake Body Dump Truck 12 Foot Body, Dual Rear Wheels, Super Clean, Only 16,000 Miles



90 Ford F-150 XLT Lariat A Beauty, 12,000 Miles, 6 Auto, A/C, Factory Warranty



Hot Shot 88 Ford F-450 Super Duty 7.3 Diesel, 5 Spd., A/C, Custom Built Sleeper, TV, VCR, Side Door, 5th Wheel Hitch, 38,000 Miles



Cummins Turbo Diesel 89 Dodge LE 250 Auto, A/C, 33,000 Miles



6 Wheel Drive, 89 GMC 3500 Super Cab Dually 454 f.i. Auto, A/C, Loaded, Tow Package, Awesome 39,000 Miles



88 Ford F-250 Super Cab Great For Trailer Towing, 460, Auto, AC, Dual Tanks, Very Clean