



Philadelphia Vegetables
Oct. 9, 1991

CLEAR 48-64.
ARTICHOKEs CA ctn 24s few 15.00 36s 11.00 48s 10.00 previous commitments 7.00.
ASPARAGUS OFFERINGS INSUFFICIENT TO QUOTE.
BEANS ABOUT STEADY various bu containers Round Green type unless otherwise stated NJ 6.00- 7.00 few incl fair qual 5.00 few best 8.00-9.00 VA fair qual 5.00-6.00 NC 10.00 few 11.00 CA 25-lb crt Fava type 15.00-16.00.
BEANS-LIMA OFFERINGS INSUFFICIENT TO QUOTE.
BEETS NJ crt bchd 12s 6.00 topped bubkt 8.00-9.00.
BROCCOLI SLIGHTLY HIGHER CA ctn bchd 14s 9.50-11.00 mos 10.00-10.50 occ hgr lse crowns 13.50 ME ctn bchd 14s 8.50.
BRUSSEL SPROUTS CA 25-lb ctn 13.00-14.00.
CABBAGE ABOUT STEADY 1-3/4 buctn & crt med green unless otherwise stated NJ one label 7.00- 8.00 fair appear 6.00 fair cond 5.00 Red 8.00 PA 7.00 NY 6.00-7.00 mos 6.00 few 5.00 50-lb sks lge 6.00 fair cond 5.00 CANADA Savoy type 7.00 Red 7.00- 8.00.
CARROTS ABOUT STEADY 48-1 lb film bags in film sacks CA med-lge 8.00-9.00 previous commitments 7.00 50-lb sacks loose jumbo CA 7.00 few 6.50 CO & MEXICO 5.00 CANADA 6.00 few 6.50 ctn bchd 24s CA 10.50 miniature type CA ctn bchd 24s 11.00- 11.50.
CAULIFLOWER ABOUT STEADY CA ctn film wrpd 9s 9.00-10.00 12s 10.00-11.00 CANADA flat ctn jacket pack 9s 6.00-7.00 12s 6.00-8.00.
CELERY ABOUT STEADY CA ctn 2

doz 9-9.50 some 8.00 fair cond 7.00 2-1/2 doz 8.00-10.00 mos 9.00 few high as 11.00 MI ctn 2-3 doz 5.00-6.00.
CHINESE CABBAGE CA 50-lb ctn Nappa 12.00-13.00 Bok Choy 12.00.
CORN ABOUT STEADY wirebound crt approx 4-1/2 doz unless otherwise stated NY Yellow fair cond 5.00-7.00 White fair cond 6.00-8.00.
CUCUMBERS ABOUT STEADY 1-1/9 buctns & ctns waxed medium unless otherwise stated VA 7.50-9.00 mos 8.00 few 7.00 fair qual 4.00-5.00 sml 5.00-6.00 GA 7.00-8.00 fair qual 4.00-5.00 sml 5.00-6.00 FL fair qual few 6.00 NC few 11.00 CANADA flat ctn Long Seedless type film wrpd 12s 5.00-6.00 mos 6.00.
DAIKON CA 40-lb ctn 12.00.
EGGPLANT LOWER FL buctn wrpd med 8.00-10.00 NJ 1-1/9 buctn wrpd med 9.00-10.00 few low as 8.00 fair qual 5.00 GA 1-1/9 buctn wrpd med fair appear 6.50-8.50 mos 7.00- 8.00 1-1/9 buctn wrpd med 12.00.
ENDIVE ABOUT STEADY NJ 1-1/9 buct & ctn 5.50-6.50 mos 6.00 BELGIUM 10-lb ctn Witloof type 22.00.
ESCAROLE ABOUT STEADY NJ 1-1/9 buct & ctn 5.50-6.50 mos 6-6.50.
GARLIC per lb CA 30-lb ctn White new crop colossal .73 super jumbo .67 extra jbo .60.
GREENS ABOUT STEADY crt & ctn approximately 1-1/2 bu bchd unless otherwise stated NJ Collards 5.00-6.00 Mustard 5.50 Turnip Tops 5.50-6.00 mos 6.00 Kale 5.50-6.00 Swiss Chard & Dandelion 7.00 PA Collards 5.00-6.00 mos 5.50-6.00 Turnip Tops, Kale & Rape 5.50-6.00 OH Mustard, Turnip Tops & Rape 7.00 Kale 6.00 CA 24s Red Kale 14.00.
LEEKs ABOUT STEADY NJ crt bchd 12s 9.00-10.00 mos 10.00 CA ctn bchd 12s 11.00-11.50 GUATEMALA ctn bchd 12s 9.00.

LEAF CA ctn 24s 8.00-9.00 few 9.50 few 7.00 Red 8.50-9.00 few 9.50 fair cond 6.00 NJ crt 24s incl Red few 5.00-6.00.
MUSHROOMS STEADY PA 4-qt bkt med-lge 4.50-5.00 mos 4.50 sml-med 3.50-4.00 mos 3.50 10-lb ctn med 8.25-9.00 mos 8.50 lge 11.00 exlge 11.00-11.50 packages 10-12 oz 8.25- 8.50 mos 8.50 few 8.75 3-lb ctn Shiitake 14.50-15.00 fair qual 9.50-10.00 few 10.50.
OKRA TOO FEW SALES TO QUOTE.
ONIONS-GREEN ABOUT STEADY ctn bchd 48s NJ 8.00-9.00 CA 8-8.50 OH 7.00-8.00 CANADA 7.00 MEXICO 6.00.
PARSLEY ABOUT STEADY bchd 5 doz Curly unless otherwise stated OH crt 8.00 Plain 10.00 NJ crt & bubkt 6.00-7.00 Plain 8.00 CA ctn 10.00.
PARSNIPS NJ 1/2 buctn few 12.00.
PEAS-GREEN ABOUT STEADY CA buctn few 20.00 GUATEMALA 10-lb ctn per lb Sugar type .90-1.00.
PEAS-SOUTHERN OFFERINGS INSUFFICIENT TO QUOTE.
PEPPERS LOWER 1-1/9 buctns & ctns Calif Wonder type Green unless otherwise stated NJ lge 8.00-9.00 med-lge & med 6.00-7.00 Mixed Red med few 6.00 Red lge few 12.00 Cubanelle sml-med 5.00-6.00 Longhots few 12.00 CA exlge 11.00-12.00 lge 10.00-12.00 mos 10.00 med-ge fair qual 7.50-8.00 15-lb ctn Red & Yellow lge fair cond 8.00-10.00 SC lge 10.00 VA lge 8.00-9.00 med 6.00-7.00 FL buctn Longhots 10.00-12.00 mos 12.00 1/2 buctn Jalapeno 9.00-10.00 Hungarian Wax 7.00-8.00 CANADA lge 9.00-10.00 med 7.00-8.00 one lot 6.00.
RADISHES ABOUT STEADY OH ctn Red 30-6 oz film bags 6.00 few 6.25 fair cond 4-4.50 14-1 lb film bags 6-6.25 ctn bchd 24s 7.00 MI ctn Red 14-1 lb film bags 6.75.
RHUBARB NO OFFERINGS.
RUTABAGAS CANADA CD#1 waxed med 50-lb ctns 7.00.
SPINACH CA LOWER, OTHERS ABOUT STEADY NJ Savoy type 1-1/4 buct 6.00-7.50 mos 6.50-7.00 bubkt 8.00 CO Savoy type bubkt clipped few 12.00 PA Savoy type 1-1/9 buct few 9.00-10.00

CA Flat type bchd 24s ctn 8.50-9.00 crt 10.00.
SQUASH ABOUT STEADY 1/2 & 5/9 buctn & ctns unless otherwise stated NJ Zucchini sml-med 4.00- 6.00 med 3.00-5.00 buctn Zucchini med-lge 3.00 1-1/9 buctn Acorn & Butter- nut few 7.00-8.00 GA Zucchini sml-med 6.00 fair qual 3.00-5.00 med 5.00 Yellow Straight-neck sml-med 6.00 fair qual 3.00-4.00 med 5.00 FL Zucchini sml-med 6.00 med 5.00 Yellow Straightneck sml-med 6.00 med 5.00.
SWEET POTATOES ABOUT STEADY NC new crop 40-lb ctn Jewel type US#1 few 11.00 NJ new crop 40-lb ctn Jewel type few 9.00 1/2 buctn Yellow Jersey 7.00-9.00 fair qual 5.00-7.00 few 8.00 Red Jersey 12.00-14.00 fair qual 9.00.
TOMATOES SLIGHTLY HIGHER 25-lb ctn Pink to Light Red 85% or better US#1 qual unless otherwise stated CA 5x6s 7.50-8.00 6x6s 7.00 fair qual 5x6s 7.00 ord cond 1.00-2.00 6x6s ord cond 1.00-2.00 1-lyr ctn 4x5s Red 4.00 FL exlge 7.50-8.00 fair cond 5.00-6.00 lge fair cond 5.00-6.00 fair qual exlge 6.00-7.00 TN 8.00 fair cond 6.00 6x6s 7.00 VA vinerpe fair appear lge 5.00-6.00 med 4.00- 5.00 REPACKED LOCALLY VA & few CA 5x6s 9.00 6x6s 9.00 6x7s 8.50 PLUM TYPE FL few 8.00 CHERRY TYPE flats 12-1 pt trays FL few 7.00 Red 5.00-6.00.
TURNIPS topped PA 25-lb film bags 8.00.
VEGETABLES-OTHER CA ctn 12s celery root few 15.00 ITALY 1-lyr ctn Radicchio 12s 9.00-10.00 GUATEMALA 1-lyr ctn Radicchio 12s 9-9.50.
WATERCRESS AL ctn bchd 24s 11.50-12.00.

type med 600-750 25-lb mesh sks Red med-lge 8.00.
POTATOES ABOUT STEADY 50-lb sacks US#1 size A washed or brushed unless otherwise stated ROUND WHITES DE 475-500 lge 600 NYLI 475- 525 mos 500 few 550 lge 575-600 mos 600 baled 10-5 lb paper sks 725 ME 500 lge 600 ROUND REDS WI sz B 12.50-13.00 fair appear 10.00 MN/ND 800 B 10.50-12.00 NY 500-600 sz B incl fair appear 900-11.00 RUSSETS Norkotah 50-lb carton count unless otherwise stated ID 70-80s 11.00-12.00 90s 10.50-11.00 100s 850-900 Burbank 70-80s 10.00-12.00 few 12.50 90s 9.00-11.00 100s 750-950 few 10.00 baled 10-5 lb film wrpd non sz A 750 WI 70-80s 700-800 some 650 90s 650-700 100s 600 few 550 120s 550 baled 10-5 lb film bags non sz A 550 WA 70s 800 80s 700-800 90s 600-700 few 750 100s 500-600 CO Burbank 70-80s 750-800 90s 7-750 100 650 MI Norkotah 70s & 100s fair qual 6-650 US#2 10 oz min 6-650.

Buffalo Produce
Mifflinburg R3
Oct. 8 and 10, 1991

Report Supplied by Auction
LOCAL TOMATOES: #1 LARGE 6.00-10.00, #1 MEDIUMS 4.00-6.00.
WATERMELONS: CRIMSON SWEETS 20 LBS. AND UP 1.25.
GREEN BEANS: 4.00-7.00 1/4 BU.
YELLOW BEANS: 4.00-8.00 1/4 BU.
LIMA BEANS: 8.00-10.00 BU.
ZUCCHINI: 4.00-6.50 1/4 BU.
PEPPERS: LARGE 5.00-7.00, MEDIUM 4.00-6.00, RED 9.00-14.00.
CABBAGE: 2.00-6.00 50-LB. BAG.
JACK BE LITTLES: 6.00-9.00 1/4 BU.
GOURDS: 3.00-7.00.
BUTTERNUT SQUASH: 3.00-5.25 1 1/9 BU.
CAULIFLOWER: 45-1.05 HEAD.
ACORN SQUASH: 4.00-5.50 1 1/9 BU.
MINI INDIAN CORN: 45-.75 BUNCH.
PUMPKINS: 20 LBS. AND UP 1.50-3.00 EACH; SPOOKY PUMPKINS .20-.35 EACH.
BROCCOLI: 5.50-6.50 BU.
NEXT WEEK'S AUCTION TUES. AND THURS.

Phila. Potato & Onion

Oct. 9, 1991
Clear 48-64 (CORRECTION:MI RUSSET POTATOES SHOULD READ MN).
ONIONS-DRY ABOUT STEADY 50-lb sacks US#1 or generally good quality and condition Yellow unless otherwise stated CA Grano type repacker sz 700 CO Spanish Hybrid type Repacker sz 700 White jumbo 13.00-14.00 25-lb sks Red lge 725-800 med 6-650 ID-OR Spanish Hybrid type jumbo 7-750 White jumbo 13.00 25-lb sks Red lge 700-800 med 600 UT Spanish Hybrid type 7-725 few 750 NM White jumbo 11.00-13.00 NY Globe

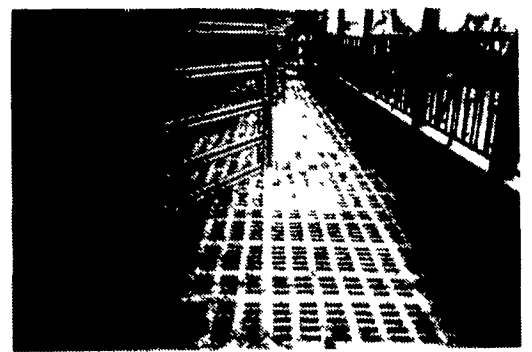
Slatted Beef Barn



Free-Stall Cow Barn



Slatted Heifer Barn



Slatted Hog Barn



KEYSTONE CONCRETE PRODUCTS INC.

477 East Farmersville Rd.
New Holland, PA 17351
(717) 355-2363

The concrete slat with your animals comfort in mind. A large percentage of openings keep animals clean & dry.

Other Products:

- H&J Bunks • Hog & Cattle Slats • Concrete Hog Penning • Concrete Post & Beam • Bunker Silo

Give us a call for more information on hog, beef, dairy and heifer barns

