

(Continued from Page A5)

44% PROTEIN BULK NEW EAR CORN RANGE 64.00-78.00, AVERAGE 69.00. SOUTHEASTERN, CENTRAL & SOUTH CENTRAL SUMMARY CORN NO. 2-Y RANGE 2.61-2.90, AVERAGE 2.81; @ WHEAT NO. 2 RANGE 2.80-3.50, AVERAGE 3.07; BARLEY NO. 3 RANGE 1.70-2.00, AVERAGE 1.82; OATS NO. 2 RANGE 1.30-1.60, AVERAGE 1.46; SOYBEANS NO. 1 RANGE 5.40-5.92, AVERAGE 5.70; EAR CORN RANGE 73.00-86.00, AVERAGE 79.50; 44% PROTEIN BULK NEW EAR CORN RANGE 54.00-70.00, AVERAGE 62.08.

CENTRAL PENNSYLVANIA CORN NO. 2-Y RANGE 2.80-2.95, AVERAGE 2.87; @ WHEAT NO. 2 RANGE 2.70-3.20, FEW REPORTED 3.40, AVERAGE 2.94; BARLEY NO. 3 RANGE 1.55-2.08, MOSTLY 1.70-1.80, AVERAGE 1.78; OATS NO. 2 RANGE 1.30-1.60, AVERAGE 1.46; SOYBEANS NO. 1 RANGE 5.45-6.00, AVERAGE 5.72; FEW REPORTED PER HUNDREDWEIGHT RECLEANED 15% BUCKWHEAT RANGE 8.15, AVERAGE 8.15; FEW REPORTED OLD EAR CORN RANGE 73.00-80.00, AVERAGE 78.20.

WESTERN PENNSYLVANIA CORN NO. 2-Y RANGE 2.41-2.80, AVERAGE 2.67; @ WHEAT NO. 2 RANGE 2.80-3.10, AVERAGE 2.93; BARLEY NO. 3 RANGE 1.80-1.82, AVERAGE 1.81; OATS NO. 2 RANGE 1.30-1.60, FEW REPORTED 1.10, AVERAGE 1.43; SOYBEANS NO. 1 RANGE 5.55, AVERAGE 5.55; EAR CORN RANGE 66.00-70.00, AVERAGE 68.00.

MONTH AGO CORN NO. 2-Y 2.85; @ WHEAT NO. #2 2.94; BARLEY NO. 3 1.75; OATS NO. 2 1.40; SOYBEANS NO. 1 5.71; EAR CORN 79.76.

YEAR AGO CORN NO. 2-Y 2.68; @ WHEAT NO. #2 2.74; BARLEY NO. 3 2.02; OATS NO. 2 1.31; SOYBEANS NO. 1 6.01; EAR CORN 80.20.

**New Holland Horses**

New Holland Sales Stables  
New Holland, PA  
Monday, September 30, 1991  
REPORT SUPPLIED BY AUCTION

424 HEAD; MARKET LOWER. DRIVING HORSES 465.00-725.00. BETTER DRIVING HORSES 875.00-1100.00. RIDING HORSES 450.00-700.00. BETTER RIDING HORSES 775.00-940.00. NO REGISTERED HORSES. MARE PONIES 55.00-235.00. PONY COLTS 45.00-90.00. LARGER PONIES 275.00-450.00. GELDINGS 55.00-235.00. LIGHTWEIGHT KILLERS 400.00-510.00. HEAVYWEIGHT KILLERS 590.00-750.00. THIN 100.00-350.00. HORSE COLTS 175.00-375.00.

**New Holland Dairy**

New Holland Sales Stables  
Wednesday, October 2, 1991  
Report supplied by auction  
DAIRY COW RECEIPTS 65; HEIFERS 86 AND BULLS 6. MARKET STEADY; FEW BETTER FRESH COWS VERY ACTIVE.  
LOAD FRESH COWS PENNSYLVANIA 900.00-1400.00, 1 REG. 1525.00, SEVERAL FRESH HEIFERS 850.00-1250.00.

PERRY COUNTY 1100.00-1350.00. LOAD FRESH WISCONSIN 1125.00-1625.00. NORTHERN PA 1300.00-1775.00. FEW LOCAL COWS IN ALL STAGES OF PRODUCTION 650.00-1000.00, SPRINGERS 850.00-1325.00. SPRINGING HEIFERS 850.00-1125.00; FEW SMALL HEIFERS 650.00-850.00; SHORFBRED HEIFERS 650.00-900.00; OPEN BREEDING AGE HEIFERS 525.00-625.00; SMALL OPEN HEIFERS 295.00-400.00. VACCINATED HEIFERS BRING A PREMIUM.

**Isennock Auction**

New Park, PA  
Monday, October 1, 1991  
Report supplied by auction  
SLAUGHTER COWS: SMALL AND SLOW RUN 49.00 AND DOWN.  
VEAL CALVES: 100-110 LBS. 84.00-117.00; 85-95 LBS. 79.00-107.00; WEAK AND ROUGH 80.00 AND DOWN.

FARM CALVES: 115-130 LBS. 145.00-175.00; 100-110 LBS. 130.00-172.00; 85-95 LBS. 100.00-169.00. HOSLSTEIN STEERS: 480-580 LBS. 65.00-68.00, 1 AT 1560 LBS. 59.75. BULLS: 1 AT 1105 LBS. 55.50. SOWS: 430-570 LBS. 37.50-41.25. BOARS: 420-660 LBS. 31.75-34.00. FEEDER PIGS: 36.00-57.00 HEAD. SHEEP: 140-210 LBS. 14.00-16.00. LAMBS: 55-70 LBS. 30.00-38.00. GOATS: 35.00-45.00 HEAD; KIDS 18.00-26.00 HEAD.

**Dewart Livestock Auction**

Dewart, Pa.  
Monday, September 30, 1991  
Report Supplied by PDA  
CATTLE 80...PDA...Compared with last Monday's market: Slaughter cows steady to mostly 1.50 lower. One Select slaughter steer 63.75. Few Select sl. heifers 58.00-64.00. Few Breaking Utility & Commercial sl. cows 48.00-51.00, Cutter & Boning Utility 47.00-50.00, couple 52.75, Canner & Low Cutter 43.00-46.00, Shells down to 38.00. One Yield Grade No. 1, 1630 lbs. sl. bull 60.50, one No. 2, 1150 lbs. 52.00. Feeder Cattle: Few Medium Frame No. 1, 500/850 lbs. steers 59.00-77.50.  
CALVES 163...One Choice vealer 100.00, few Standard & Good 70/95 lbs. 70.00-85.00, few Utility 50/75 lbs. 40.00-60.00. Farm Calves: Holstein Bulls

No. 1, 85/125 lbs. 150.00-180.00, No. 2, 70/120 lbs. 90.00-140.00; few Hol. Heifers 70/110 lbs. 87.50-160.00. Few beef cross 70/100 lbs. bulls and heifers 100.00-150.00.  
HOGS 26...Couple Lots US 1-2 250 lbs. barrows and gilts 47.10 and 230 lbs. 47.50. US No. 1-3 340/525 lbs. sows 38.25-42.25. Few Boars 32.00-33.00.  
FEEDER PIGS 94...US No. 1-3 20/35 lbs. feeder pigs 14.00-21.50, lot 55 lbs. 30.00, lot 75 lbs. 21.50 --- all per head.  
SHEEP 13...Few Good and Choice 45/75 lbs. wool slaughter lambs 41.00-55.00. Few Slaughter ewes 10.00-14.00. - all per hundredweight basis.  
GOATS 0...No Market Test.

**New Wilmington Livestock Auction**

N. Wilmington, Pa.  
Monday, September 30, 1991  
Report Supplied by PDA  
CATTLE 227...PDA...Few Choice slaughter steers 65.50-68.00, few Select 62.00-65.50, few low dressing 58.00, few Standard 52.50-59.50; few High Select and Choice Holsteins 63.75-66.75. Breaking Utility & Commercial sl. cows 47.00-50.50, low yielding and low dressing 43.00, Cutter & Boning Utility 45.00-50.00, Canner & Low Cutter 35.00-45.00, Shells down to 20.00. Few Yield Grade No. 1, 1435/1720 lbs. sl. bulls 60.50-62.50, one 68.25, one No. 2, 1235 lbs. 55.00. Feeder Cattle: Few Medium &

Large Frame #1, 300/475 lbs. steers 75.00-83.00, few 635/1030 lbs. 62.50-70.00. Medium & Large Frame #1, 320/585 lbs. heifers 65.50-75.00, few Large No. 2, 425/675 lbs. Holsteins 57.00-63.00.  
CALVES 249... Supply included 80% sold to return to farm...One Choice vealer 118.00, one Good 100.00, few Standard & Good 90/120 lbs. 60.00-70.00, 60/85 lbs. 48.00-65.00, Utility 45/60 lbs. 32.50-48.00. Farm Calves: Hol. Bulls 80/135 lbs. 120.00-187.50, No. 2, 80/125 lbs. 80.00-130.00; Hol. Heifers 80/115 lbs. 120.00-174.00. Beef cross 70/120 lbs. bulls & heifers 115.00-190.00, few down to 73.00.  
HOGS 254...Barrows and gilts: US No. 1-2 230/250 lbs. 46.00-46.75, 1-3 225/265 lbs. 45.00-46.25, 2-3 235/270 lbs. 43.00-44.35, 1-3 210/225 lbs. 39.50-45.00. US No. 1-3 310/580 lbs. sows 37.00-42.00, few 42.75-45.50. Boars 33.50-34.75.  
FEEDER PIGS 95...US No. 1-3 30/40 lbs. feeder pigs 23.00-29.00, 50/70 lbs. 30.00-41.00 --- all per head.  
SHEEP 93...High Choice & Prime 85/115 lbs. wool slaughter lambs 50.00-57.00, Choice 70/100 lbs. 42.00-50.00; Good & Choice 85/115 lbs. 34.00-40.00; Good and Choice 50/80 lbs. feeder lambs 32.00-40.00. Slaughter ewes 12.00-21.00. - all per hundredweight basis.  
GOATS 12...Few Large 30.00-38.00, Medium and Small 16.00-32.00 --- all per head.

**FOR SALE SHAVINGS & SAW DUST**

- ★ Delivered To Your Location
- ★ Year Round Supply
- ★ Excellent for Dairy or Horses

Call For Price To Your Area  
**717-653-5935**

*J.D. Martin inc.*

Mt. Joy, PA



Every Wednesday  
At 11:00 A.M.

**GOOD'S AUCTION**  
111 Maple Ave.  
Leola, PA 17540  
717-656-8911  
717-656-9554

**Ayrshire Herd Dispersal**

Sat., Oct. 12 - 11 A.M.  
for  
Ayrshire Acres Trust  
See Page B42 For Full Details

**Fall Feeder Sale**  
Stockers & Feeders  
Fri. Eve., Oct. 18 - 7 P.M.

**NEW HOLLAND SALES STABLES INC. THE ACTION AUCTION**

LIVESTOCK IS OUR ONLY BUSINESS

**SPECIAL HORSE SALE**

SAT., OCT. 19 12:30 P.M.  
For  
Christ Z. Stoltzfus  
See Page B28 For Full Details

**Horse Sale**  
Fri., Nov. 8 - 7:00 P.M.  
Tack 6 P.M.  
Horses Hitched 12 Noon

**MONDAY**

SLAUGHTER HOGS

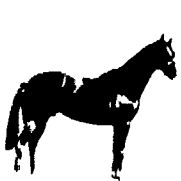


**EARLY BIRD HOG SALE**  
**8:00 A.M.**

Sell Your Hogs At New Holland Sales Stables, Inc.  
See them weighed, sold and pickup your check.

**10:00 AM**

HORSES  
MULES



**1:30 PM**

**BEEF SALE**  
SHEEP  
GOATS  
CALVES



**WEDNESDAY**

**HEIFER SALE**  
**11:00 AM**

**COW SALE 12:00 NOON**

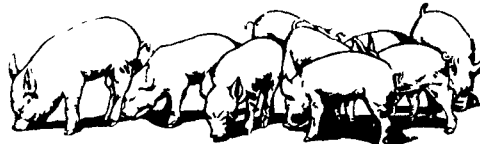
HEIFERS DAIRY  
BULLS COWS



We have the usual run of 50 to 100 Heifers, all ages. Loads of fresh cows and springers from our regular shippers. Also some local fresh cows and springers.

**1:30 P.M.**

**FEEDER PIG SALE**

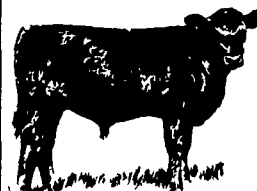


Pigs are accepted after 6:30 A.M. State graded from 8 to 12 Dairy Barn and Feeder Pig Barn are cleaned and disinfected weekly for your protection.

**THURSDAY**

**Beef Auction**  
**10:00 A.M.**

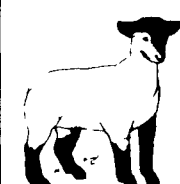
BULLS  
STEERS  
BEEF COWS



**1:00 P.M.**  
**STOCKERS**  
&  
**FEEDERS**

**12:00 NOON**

SHEEP  
GOATS  
CALVES



**NEW HOLLAND SALES STABLES, INC.**  
12 Miles East of Lancaster Off Route 23, New Holland, Penna.

**MANAGERS**  
Norman & David Kolb - 717-397-5538

**Field Representatives**  
Luke Eberly - 215-267-6608 738-1865  
Homer Eberly - 215-267-3047  
Ron Ranck - 717-656-9849

**Sale Barn Office Manager**  
Roger Floyd - 717-354-4341  
FAX # 717-355-0706

**Order Buyer**  
Paul Good - 215-445-6662