

Indiana Livestock

Homer City, PA
Oct. 3, 1991

Report supplied by PDA

CATTLE 202: CH. & PR. SL. STEERS CHOICE FEW 65.00-66.50, CH. FEW L-Y 1375-1600 57.00-60.00; SELECT FEW 62.25-65.00. CH. & PR. HOLS. STAND FEW 56.25-61.25, CHOICE SL. HEIFERS FEW 62.00-64.50, CH. FEW L-Y 57.00-59.50, SEL. 58.00-61.50, STAND. 53.00-57.50, BREAKING & T. & COMMERCIAL SL. COWS 46.50-51.00, ONB 53.75, L.Y. & L.D. TO 42.50, CUTTER & BON. UT. 43.00-47.00, CANNER & LO CUTTER 35.00-43.00, SHELLS DOWN TO 20.00, YIELD GRADE NO. 1 1140-2175 LBS. SL. BULLS 56.00-59.75, NO. 2 1235-1430 LBS. FEW 53.00-55.25. FEEDER CATTLE: STEERS FEW M&L 370-470 LBS. 75.50-83.00, M&L 1 875-1050 LBS. 63.25-67.50. HEIFERS M1 310-405 LBS. 69.50-79.50, M-L 1 500-800 LBS. 62.25-66.00.

CALVES 130: FARM CALVES OF WHICH 80% SOLD TO RETURN TO FARM. FEEDERS CHOICE ONE 102.00, GOOD FEW 83.00-93.00, STAND. & GD. 90-120 LBS. FEW 70.00-90.00, 60-85 LBS. 46.00-72.50, UT. 45-70 LBS. 30.00-47.50, NO. 1 HOLSTEIN BULLS

85-135 LBS. 112.50-172.50, NO. 2 85-110 LBS. 87.50-15.00, NO. 1 HOL. HEIFERS 90-110 LBS. FEW 122.50-180.00. BEEF CROSS 70-125 LBS. BULLS & HEIFERS 92.50-180.00, 190-280 LBS. 70.50-103.00. HOGS 92: BARROWS & GILTS US NO. 1-2 LOT 230 LBS. 47.00, 1-3 230-250 LBS. 45.25-46.25, 2-3 LOT 260 LBS. 43.25, 1-3 185-210 LBS. 40.25-48.25, SOWS: US NO. 1-3 445-480 LBS. FEW 40.00-41.00, 2-3 408-670 LBS. FEW 35.25-35.75. BOARS 32.00-33.00.

FEEDER PIGS 6: US NO. 2-3 LOT 45 LBS. FEEDER PIGS 18.00.

SHEEP 29: SPRING/OR/WOOL SL. LAMBS CHOICE 65-115 LBS. 40.00-42.75. SLAUGHTER SHEEP FEW 7.50-15.50.

GOATS 12: FEW LARGE 52.50-86.00, MED. & SMALL 18.00-43.00.

North Jersey Livestock

Hackettstown, NJ

Tuesday, October 1, 1991

Report supplied by auction

CALVES .48-1.97% .

COWS .31%-.53% .

EASY COWS .10-.41% .

HEIFERS .42%-.66.

BULLS .44%-.64.

STEERS .50-.69.

HOGS .25-.44.
ROASTING PIGS, EACH 5.00-47.00.
SOWS .21-.37.
BOARS .30-.31% .
SHEEP .10-.38.
LAMBS EACH 15.00-62.00.
LAMBS PER LB. 22-.75.
GOATS EACH 30.00-95.00.
KIDS EACH 20.00-54.00.
TOTAL 1181.

Morrison Cove Livestock

Martinsburg, Pa.

September 30, 1991

Report supplied by auction

CATTLE: 282. STEERS CHOICE 68.00-71.25; GOOD 65.00-67.75.

HEIFERS: CHOICE 67.00-69.75; GOOD 62.00-66.75.

COWS: UTILITY AND COMMERCIAL 48.50-52.00, CANNER AND LOW CUTTER 33.00-47.50.

BULLOCKS: GOOD AND CHOICE 61.00-63.00.

BULLS: YG#1 57.00-65.00.

FEEDER CATTLE: STEERS 75.00-91.00, BULLS 65.00-84.00, HEIFERS 60.00-82.00.

CALVES: 257. PRIME NO MKT.

TEST: CHOICE 95.00-99.50; GOOD 86.00-94.00; STANDARD AND GOOD 60.00-85.00; HOLSTEIN BULLS 90-130 LBS. 140.00-175.00; HOLSTEIN HEIFERS 90-130 LBS. 130.00-155.00.

HOGS: 103. US#1-2 46.50-47.50, US#1-3 44.75-46.25.

SOWS: US#1-3 37.00-41.00.

BOARS: 32.00-34.00.

FEEDER PIGS: 44. US#1-3 20-35 LBS. 17.00-27.00 PER HD.

SHEEP: 29. CHOICE 45.00-49.00;

GOOD 40.00-44.00; SLAUGHTER EWES 12.00-18.00.

GOATS: 11.00-69.00.

10 LOADS HAY. ALFALFA

107.50-142.50; TIMOTHY 86.00-100.00.

Jersey Shore Livestock Market, Inc.

Auction every Thursday

at 4:00 p.m.

Jersey Shore, Pa.

Report supplied by Auction

Thursday, Oct. 3, 1991

RETURN TO FARM CALF 1.10-1.85.

GOOD VEAL: 70.00-109.00.

COMMON VEAL: 40.00-69.00.

CHOICE STEERS: 64.00-66.75.

SELECT STEERS: 60.00-63.00.

COMMON STEERS: 55.00-59.00.

CHOICE HEIFERS: 62.00-65.75.
SELECT HEIFERS: 58.00-61.00.
COMMON HEIFERS: 49.25-57.00.
COMMERCIAL COWS: 47.00-51.75.
CANNERS-CUTTERS: 42.00-49.00.
SHELLS: 36.00-41.00.
COMMON FEEDERS: 60.00-69.00
GOOD FEEDERS: 70.00-90.00.

Penns Valley Livestock Market, Inc.

Auction every

Tues. 7 p.m.

Centre Hall, Pa.

Report supplied by Auction

Tues., Oct. 1, 1991

RETURN TO FARM CALF 1.20-1.80.

GOOD VEAL 80.00-119.00.

COMMON VEAL 50.00-79.00.

CHOICE STEERS: 65.00-68.25.

SELECT STEERS: 63.00-64.00.

COMMON STEERS 52.00-61.00.

COMMERCIAL COWS 47.00-50.50.

CANNERS-CUTTERS 42.00-49.00.

SHELLS 25.00-41.00.

CHOICE HEIFERS: 62.00-65.00.

SELECT HEIFERS 58.00-61.00.

COMMON HEIFERS: 50.00-57.00.

GOOD FEEDERS: 70.00-95.00.

COMMON FEEDERS 33.00-69.00.

POLE BUILDINGS

By Sam Stoltzfus



Maintenance Free
Painted, Galvanized Roof & Siding
Pressure Treated Poles & Skirting

TALBOTVILLE CONSTRUCTION

Honey Brook, PA

(215) 273-2870 (215) 273-3495 Res.

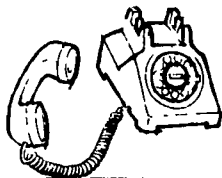
PRESSURE POINTING



This Is THE ANSWER For A Structurally Sound Wall

- Stronger Than Repointing Methods
- Longer Life Span
- Fast & Economical Installation

So Please
Give Us A



WE CAN
STRENGTHEN
ANY WALL

- Stone Wall Repairs
- Installation & Maintenance of Concrete Bunker Silos
- PreCast Gunitite Lined Water or Manure Storage Tanks
- Dam, Reservoir & Spillway Repair
- Slatted Floor Systems
- Silo Repairs

We're The "Concrete Specialists"

MAR-ALLEN CONCRETE PRODUCTS, INC.



Gunitite Construction • Precast Concrete Products
Bridge Repair • Tank Repair • Holding Tanks • Installation • Pre-Qualified by PennDot

RD #2
Ephrata, PA 17522
(717) 859-4921

Two
Convenient
Locations!

P.O. Box 337
Ebensburg, PA 15931
(814) 472-8690
Ask For Mike

Subsidiary of Seal-Crete Corp.

Pre-Christmas
SALE!

ABS - WINROSS TRUCK OFFER Form

★ Good While Supply Lasts.
Limited Offer ★

Send: Name _____

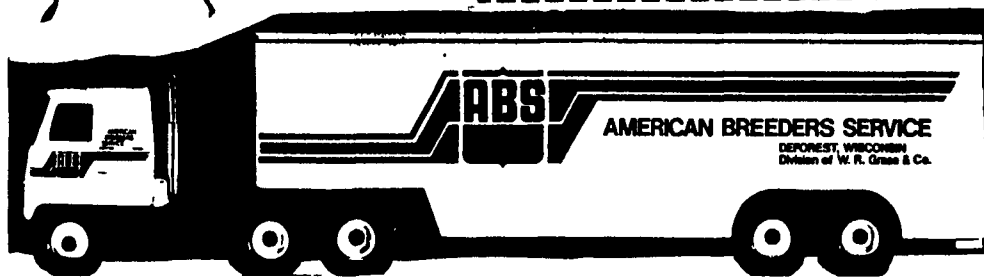
Address _____

State _____

Zip Code _____

To: **S&S Trucks**
5549 Old Phila Pike
Gap, PA 17527

Enclose \$30.00 for truck and \$3.00 for Shipping and Handling

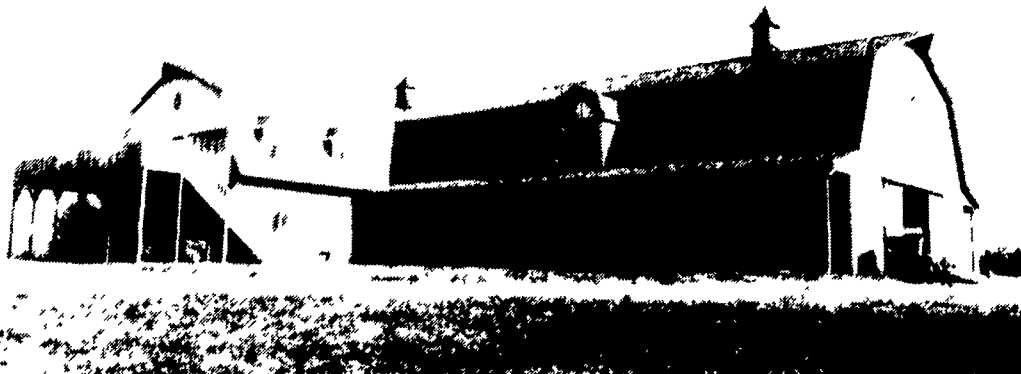


CONGRATULATIONS

To **KELLY HOY** of New York

On The Completion Of Your

NEW HORSE BARN & LIVING QUARTERS



Building By

KING CONSTRUCTION CO.



601 Overly Grove Road
New Holland, PA 17557
Tel.: 717/354-4740

Eve.: 717/274-5057

Fax: 717/355-2469