

Casey And 'Bart' Top Denver Beef Show



Denver grand champion steer honors went to Casey High, right, with his purebred Angus, F.W. Bart. Keystone Farm Credit purchased the steer for \$1,200, represented by William O'Brien, executive loan officer. Photo by Preston Whitcraft, Ephrata Review.

DENVER (Lancaster Co.) — Thirteen-year-old Casey High, Lititz, won grand champion beef honors last week at the Denver Beef Show.

The purebred 1,264-pound Angus was purchased at the fair sale for \$1,200 by Keystone Farm Credit.

Reserve grand champion, Jason Hertzog, also picked up champion showmanship honors at the show. His reserve grand champion was purchased for \$1,058 from Keystone Farm Credit.

Traci Gelsinger, Berks Co., won grand champion of the preview show with a 1,315-pound Simmental steer, "J.D." Troy Gelsinger won reserve with his 1,315-pound steer, "Lobo."

In the junior showmanship contest, Jason Hertzog won first; Troy Gelsinger, second; and David Anspach, third. Senior showmanship winners included Tammy Gelsinger, first; Traci Gelsinger, second; and Jeremy Manwiller, third.



Jason Hertzog won reserve champion steer honors at the Denver Fair last week. Photo by Preston Whitcraft, Ephrata Review.

Limousin Notches Record Growth

ENGLEWOOD, Colo. — The Limousin breed has grown at a record pace for the fifth consecutive year, as measured by annual registrations through the North American Limousin Foundation (NALF).

"Given the fact that until recently, the total cattle industry has been contracting, Limousin's record growth during this period of time has meant an expansion of market share," said Dr. Wayne Vanderwert, NALF executive vice president.

Average annual growth for the breed during the past five years has been 14.9 percent. There were 74,464 Limousin registered through NALF in the 1990 fiscal year, which ended August 31.

"During that same period of time, the rate of new memberships and transfers — cattle going to Limousin breeders and commercial cattlemen — has grown even faster," said Vanderwert.

In fact, memberships and transfers for the breed have also grown at a record pace for the past five years, notching average annual growth rates of 18.6 percent and 15.6 percent, respectively.

Likewise, the beat of the auction barn gavel across the country seems to add real-world confirmation to the growing popularity of the Limousin breed.

Alan Sears, NALF director of special activities, said, "Record numbers of Limousin bulls have sold at auction the past two years, bringing a strong but affordable average of approximately \$2,150 from a very receptive buying public."

"Calving ease, feed conversion, genetic leanness, and top yields have combined to make Limousin an opportunity breed for the industry," he said.

During the past fiscal year, Limousin was the fifth largest beef breed in the U.S. When each breed

releases its newest registration figures, Vanderwert expects Limousin to become the fourth largest beef breed.

"The Limousin story has been

one of tremendous growth and phenomenal acceptance," said Vanderwert, "What's more, the dedication of Limousin breeders today and the genetic merit of the

breed point to continued growth. Certainly, the record growth for five consecutive years has commanded attention from across the beef industry."

**Back To School
Kangaroo Sale
20% OFF**

**Buy 8 Pairs -
Get 1 Pair Free
Plus Your 20% OFF**

LEACOCK SHOE STORE

64 Old Leacock Rd., Ronks, PA

(717) 768-7440

Closed Memorial Day, May 27
M, W, Th 8-5 • T-F 8-8 • Sat. 8-4

KEN CLUGSTON
(717) 665-6775

**CRAFT-BILT
CONSTRUCTION INC.**

FARM-HOME BUILDING
1242 Breneman Road
MANHEIM, PA 17545
PH: (717) 665-4372

BUILDING & REMODELING FOR —
DAIRY RESIDENTIAL
SWINE POLE BUILDINGS
BEEF STORAGE

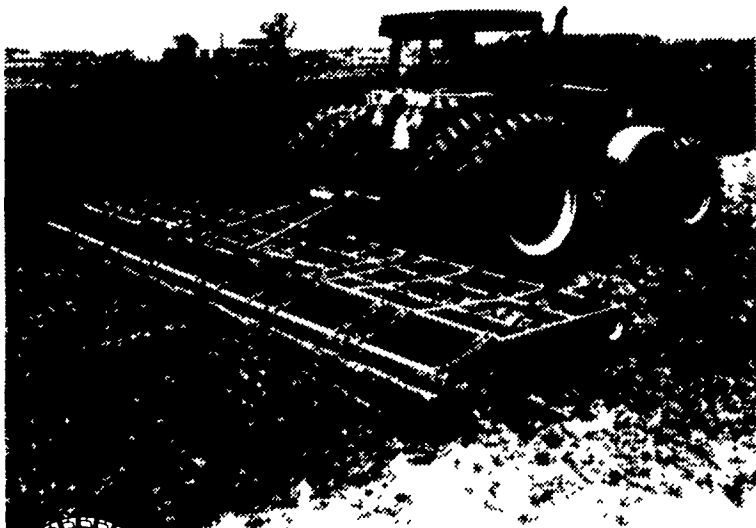
Blue-ribbon tillage at a blue-collar price.

Unverferth's Perfecta® 3-point mounted cultivator combines a spike-tooth leveling bar, three rows of penetrating S-tines, and an aggressive roller basket to deliver the effective, affordable secondary tillage you're looking for.

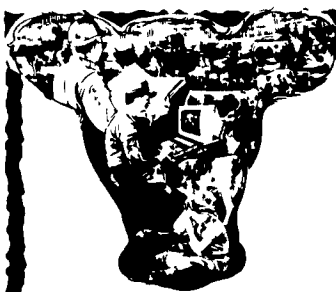
The Perfecta is available in widths from 10' to 28' and in rigid and folding models.

To find out more, call for FREE literature today.

1-800-322-6301



Unverferth Manufacturing Co., Inc.
P.O. Box 357, Kalida, OH 45853
1-800-322-6301 in the U.S. • 419-532-3121
FAX 419-532-2468 • Telex 265026



Water Quality An IMPORTANT Ingredient In Livestock Management

It's a fact! Contaminated water can have a costly effect on your livestock and poultry performance. Our years of experience plus hundreds of farm related treatment systems has proven the validity and practicality of correcting contaminated water.

Call us today for treatment of:

* Nitrates * Bacteria * Iron * Sulfates
* pH - Acidity/Alkalinity



Martin Water Conditioning Co.

SPECIALISTS IN FARM WATER TREATMENT

548 New Holland Ave
Lancaster, PA 17602
(717) 393 3612
Along Rte 23



740 E Lincoln Ave
Myerstown, PA 17067
(717) 866 7555
Along Rte 422

Willis Sharp
Somerset Pa. & Surrounding Counties
1-814-893-5081

We Serve PA & Surrounding States
— Contact Our Representatives in —

So. Chester Co., PA
Dick Breckbill 215-932-3307

Belleville, PA
Trennis King 717-935-2786

Union County, PA
Martin Beachy, Jr.
717-966-1191

Virginia
Ron Mellinger 703-879-9958