

National Grain Market

St. Joseph, MO

GRAIN AND SOYBEAN PRICES ADVANCED ON CONTINUED FROST THREATS WEDNESDAY. WHEAT 1 TO 4 CENTS HIGHER. CORN 1 TO 4 CENTS HIGHER. SORGHUM STEADY TO 6 CENTS HIGHER. SOYBEANS 5 TO 7 CENTS HIGHER. TRADERS EXPAND THEIR CONCERNS OVER FROST FORECAST AND COMMODITY PRICES CLIMBED HIGHER. CHANCES INCREASE IN MIDWEST AREAS WHERE LARGE PERCENTAGE OF CORN AND BEANS ARE GROWN AND YIELDS COULD SUFFER SIGNIFICANTLY. WHEAT PRICES ALSO SUPPORTED BY REPORT EGYPT INTERESTED IN AROUND 200,000 TONNES U.S. EXPORT BOND WHEAT. MANY COUNTRIES SEEKING EXPORT GRAIN ADD SOME STRENGTH TO GRAIN PRICE. FROST WILL HURT SOYBEAN YIELDS MORE SO THAN OTHER COMMODITIES. WITH RECENT SHARP PRICE UPTURNS AND SUBSTANTIAL DROP ON THIS DAY YEAR AGO, SPREAD WIDENED OUT. COMPARED TO A YEAR AGO WHEAT PRICES UP AROUND 22 PERCENT, CORN 15 PERCENT, BUT SOYBEANS ONLY 1 PERCENT.

EXPORT NEWS: EGYPT BOUGHT 27,800 TONNES U.S. NORTHERN/DARK NORTHERN SPRING WHEAT FOR SEP/OCT UNDER PL480 FINANCING.

DATE CHANGE YEAR AGO 09/18/91 09/17/91 09/19/90 WHEAT: KANSAS CITY 3.34-3.37 UP 1 2.72-2.77 MINNEAPOLIS 3.32 1/4-3.37 1/4 DN 1/4-2 1/4 2.79 3/4 PORTLAND 3.73-3.76 UP 4-3 3.12-3.14 ST. LOUIS 2.89-2.94 UP 1-3 2.50-2.53

CORN, U.S. NO. 2 YELLOW: KANSAS CITY 2.56-2.58 UP 3-2 2.22-2.25 MINNEAPOLIS 2.38 UP 4 2.17 1/4 SO. IOWA 2.42-2.47 UP 1-2 1/2 2.24-2.28 OMAHA 2 38-2 39 UP 2-1 2 09-2 12

SOYBEANS, NO 1 YELLOW: KANSAS CITY 6.18-6.20 UP 6 6 08-6.13 MINNEAPOLIS 6 00 1/2 UP 7 6.01 3/4 SO IOWA 6 04-6 08 UP 6-5 6 07-6.11 C ILL. PROCESSORS 6.19 1/2-6.25 1/2 UP 6 6.18-6.23

*KANSAS CITY, US NO. 1 HARD

RED WINTER WHEAT, ORDINARY PROTEIN. MINNEAPOLIS, US NO. 1 DARK NORTHERN SPRING WHEAT, 14% PROTEIN. PORTLAND, NO. 1 SOFT WHITE WHEAT, ST. LOUIS, NO. 2 SOFT RED WINTER WHEAT.

FUTURES CLOSE: KANSAS CITY (DEC) WHEAT 3.34 UP 3/4 2.73 1/2 MINNEAPOLIS (DEC) WHEAT 3.17 1/4 DN 1/4 2.64 3/4 CHICAGO (DEC) WHEAT 3.34 3/4 UP 1 1/4 2.69 1/4 (DEC) CORN 2.57 UP 2 2.22 1/4 (NOV) SOYBEANS 6.17 1/2 UP 6 6.17 3/4 DEC.

EXPORT: BARGE OR RAIL, PORT OF NEW ORLEANS OR NORTH TEXAS GULF. NO. 1 HARD RED WINTER WHEAT ORDINARY PROTEIN 3.67-3.68 UP 1-NC3.10-3.12 NO. 2 SOFT RED WINTER WHEAT 3.83 UP 3-1 2.83-2.90 NO. 2 YELLOW CORN 2.81-2.82 UP 1-2 2.47-2.53 NO. 2 YELLOW SORGHUM RAIL 4.91 UP 3 BARGE 4.88 UP 4 4.33-4.47 NO. 2 YELLOW SOYBEANS 6.48-6.51 UP 6-7 6.36-6.37.

North Jersey Market

Hackettstown, N.J.

Tuesday, September 17, 1991

Hay—Straw & Grain Report

ALFALFA HAY: 2.30-3.00 BALE. MIXED HAY: 1.70-2.30 BALE. TIMOTHY HAY: 1.10-2.00 BALE. GRASS HAY: 1.35-2.30 BALE. SHELLED CORN: 7.50 BAG. CRACKED CORN: 7.50 BAG. OATS: 6.50-8.00 BAG. TOTAL: 18 LOTS.

KIRKWOOD HAY AUCTION
Hay, Straw and Grain Auction
EVERY TUESDAY

12:00
Located Rt. 472 5 miles south of Quarryville or 6 miles north of Oxford corner of Rt. 472 and Noble Road.

Lloyd H. Kreider,
Auctioneer
AU-000513L
No out of state checks

Eastern PA & NJ

Poultry

Sept. 18, 1991

Sales too few to report prices. Demand moderate for usually adequate offerings. Undertone mostly steady.

CENTS PER POUND, GENERALLY FOR SLAUGHTER THE FOLLOWING WEEK:

LIGHT TYPE AT FARM (PRODUCER LOADING) TOO FEW TO REPORT FOB PLANT TOO FEW TO REPORT HEAVY TYPE (7 POUNDS AND UP) AT FARM (BUYER LOADING) TOO FEW TO REPORT AT FARM (PRODUCER LOADING) TOO FEW TO REPORT

Vintage Hay

Paradise, PA

Thurs., September 19, 1991

Report Supplied by Auction

3 LOADS.

MIXED HAY: 71.00-90.00.

Dewart Hay

Dewart, PA.

Monday, September 16, 1991

Report Supplied by Auction

HAY: 52.00-92.00.

STRAW: 1 AT 101.00.

WOOD: 17.00-40.00 LOAD.

CORN: 80.00-91.00.

OATS: 1 AT 1.72 BU.

Leola Produce Auction

Leola, PA

September 17, 1991

Report Supplied by Auction

APPLES: ASSORTED VARIETIES 3.00-4.75 1/2 BU.

GREEN BEANS: 16.00-20.00 1 1/9 BU.

YELLOW WAX BEANS: 14.00-25.00 1 1/9 BU.

LIMA BEANS: 12.00-16.00 1 1/9 BU.

BROCCOLI: 4.50-7.00 12-14 CT.

CAULIFLOWER: .50-1.00 HEAD.

CABBAGE: GREEN 5.50-9.00 CRATE, .30-42 HEAD; RED 6.00-7.00 CRATE.

CUCUMBERS: 9.00-12.00 1 1/9 BU.

CANTALOPES: .65-1.50 EACH.

EGGPLANT: 5.00-7.25 1 1/9 BU.

NECTARINES: 8.00-11.00 1/2 BU.

ONIONS: DRY 3.50-7.50 25 LBS.

ORNAMENTALS: GOURDS 4.75-7.00 1/2 BU.; INDIAN CORN LARGE SIZE 1.00-1.60 BUNCH, INDIAN FINGERS, SMALL SIZE .55-.90 BUNCH, JACK-BE-LITTLES 4.50-6.75 1/2 BU., POTTED MUMS 1.25-1.60 EACH; PAINTED PUMPKINS 4.50-8.50 EACH; FACE PUMPKINS SMALL TO MEDIUM .60-1.25 EACH AND LARGE TO EX. LARGE 1.25-2.50 EACH; BIG MACS 10.00-15.00 EACH; BABY PAMS .40-.55 EACH.

PLUMS: 6.00-8.00 1/2 BU.

PICKLES: 6.50-10.00 1/2 BU.

POTATOES: NEW RED AND WHITE 4.00-6.50 50 LBS. #1.

PEPPERS: LARGE AND EXTRA LARGE GREEN 7.00-10.00 1 1/9 BU., SMALL TO MEDIUM 3.00-6.00 1 1/9 BU.; RED AND YELLOW 7.00-15.00 1 1/9 BU.; SUNTAN 3.00-4.50 1 1/9 BU.; HOT 3.00-4.50 1/2 BU.

PEARS: SECKEL 5.00-7.25 1/2 BU., BARTLETT 3.50-5.50 1/2 BU.

PUMPKINS: NECK 1.00-2.40 EACH. RED BEETS: 4.50-7.50 15 CT. BUNCH; LOOSE 3.50-6.00 1 1/9 BU.

SWEET CORN: WHITE .75-1.75 DOZ. SWEET POTATOES: 5.50-12.00 1 1/9 BU.

YELLOW SQUASH: 6.00-10.00 1/2 BU.

PATTYPANS: SMALL TO MEDIUM 6.00-12.00 1/2 BU.; ACORN AND BUTTERNUT 3.75-6.00 1 1/9 BU.

TOMATOES: LARGE TO EXTRA LARGE 10.00-17.00 25 LBS. #1, SMALL TO MEDIUM 6.50-10.00 #1, CHERRY 5.00-8.00 12 PT. FLAT; PLUM 2.50-4.50 25 LBS.

TURNIPS: 3.50-5.50 25 LB. POLYBAG.

WATERMELON: SEEDLESS 1.40-2.70 EACH; SANGRIA AND ALL SWEET 1.25-3.00 EACH; CRIMSON SWEET, ALL SIZES, 1.20-2.00 EACH.

ZUCCHINI: GREEN 5.00-8.00 1/2 BU.; YELLOW 6.00-10.00 1/2 BU.

FALL CRAFT SALE OCT. 9.

FOR SALE SHAVINGS & SAW DUST

- ★ Delivered To Your Location
- ★ Year Round Supply
- ★ Excellent for Dairy or Horses

Call For Price To Your Area
717-653-5935

J.D. Martin inc.

Mt. Joy, PA



Every Wednesday
At 11:00 A.M.

GOOD'S AUCTION

111 Maple Ave.
Leola, PA 17540
717-656-8911
717-656-9554

Two Herd Dispersals
Plus 8 Reg. Heifers
sell Wed., Sept. 25.
See ad page B46

Annual Fall Heifer Sale
Sat., Sept. 28- 10 A.M.

**NEW HOLLAND SALES STABLES INC.
THE ACTION AUCTION**

LIVESTOCK IS OUR ONLY BUSINESS

Fall Feeder Sale
Stockers and Feeders
Fri. Eve., Oct. 18- 7 P.M.

Horse Sale
Fri., Nov. 8 - 7:00 P.M.
Tack 6 P.M.
Horses Hitched 12 Noon

MONDAY

SLAUGHTER HOGS



EARLY BIRD HOG SALE
8:00 A.M.

Sell Your Hogs At New Holland Sales Stables, Inc.
See them weighed, sold and pickup your check.

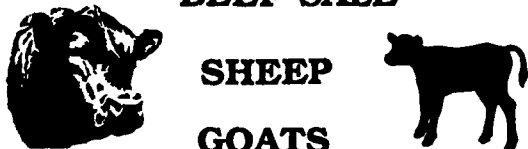
10:00 AM



HORSES
MULES

1:30 PM

BEEF SALE



SHEEP
GOATS
CALVES

WEDNESDAY

HEIFER SALE
11:00 AM

COW SALE 12:00 NOON



We have the usual run of 50 to 100 Heifers, all ages. Loads of fresh cows and springers from our regular shippers. Also some local fresh cows and springers.

1:30 P.M.
FEEDER PIG SALE



Pigs are accepted after 6:30 A.M. State graded from 8 to 12 Dairy Barn and Feeder Pig Barn are cleaned and disinfected weekly for your protection.

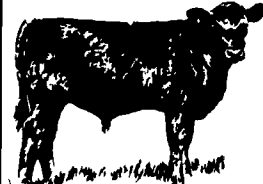
THURSDAY

Beef Auction
10:00 A.M.

BULLS
STEERS
BEEF COWS



1:00 P.M.
STOCKERS
&
FEEDERS



12:00 NOON



SHEEP
GOATS
CALVES

NEW HOLLAND SALES STABLES, INC.
12 Miles East of Lancaster Off Route 23, New Holland, Penna.

MANAGERS

Norman & David Kolb - 717-397-5538

Field Representatives

Luke Eberly - 215-267-6608 738-1865
Homer Eberly - 215-267-3047
Ron Ranck - 717-656-9849

Sale Barn Office Manager
Roger Floyd - 717-354-4341
FAX # 717-355-0706

Order Buyer
Paul Good - 215-444-6662