

Maryland State Show

(Continued from Page D7)

for 35 years with Danald serving as State Director for DHIA for 4 years. He has been a member of the National Holstein Association for 43 years and served as President, Vice-President and Director at the county level as well as serving on several committees. Donald and Sylvia have also been very active in the Dairy Princess program at both the county and state level for the past 9 years, helping the princesses promote dairy products.

Today the herd is bred 100% AI and is 100% registered. Cattle are still being shown at the county, district and state level. Donald and Sylvia are assisted in the operation and management of the farm by their two children, Wes and Cindy. The latest classification shows a BAA of 102.2%

Junior Holstein Breeder Award

Mike and Kathy Patrick of Woodbine were selected as Maryland's 1991 Outstanding Junior Holstein Breeders.

Mike's roots in the dairy industry began with registered Ayrshires, which he showed as a 4-H project. When Mike and Kathy were married in 1977, they formed a second family farm, Maple Dell II, with 44 Holsteins of which only 1 was registered, and carried a rolling herd average of 13,680 lbs. of milk. By 1986, there were 76 Holsteins sporting better than a 20,000 lb. herd average.

In 1986, the family farms were combined with Mike working with his father, David, his uncle Jimmy and brother Denny. Today, over 900 acres are farmed and there are 220 registered Holsteins averaging 21,660 lbs. milk, 3.7% 809 lbs. fat and 3.3, 718 lbs. protein. The herd's most recent classification shows a strong BAA of 103.4. In 1990 Maple Dell Farm received the award for high producing Senior Two Year Old in the state with ROM Mandingo Deena completing 31,638 lbs of energy corrected milk.

Both Mike and Kathy worked on the recent State Holstein Con-

vention committee, hosted by Howard County. In addition, Mike has served on the Howard County Holstein Association Board of Directors, and is now serving as their president. Kathy serves as a leader of the Howard County 4-H Dairy Club and the family is active in St. Michael Catholic Church.

Distinguished Service Award

The Distinguished Service Award was bestowed upon a man with a long, full career in the dairy industry.

Lester Dedrow was born and raised on a Frederick County dairy farm. He bred a high quality herd of registered Holsteins with the Gaymont prefix, including an All-American nomination. A long time supporter of the Frederick County Holstein Sale, Lester served as a leadsman for many years. His consignments topped several sales of the county club for which he served as president.

Leadership has been a major part of Mr. Dudrow's life. He has been a director of the MD Artificial Breeding Cooperative and the MD Holstein Association. Milk cooperatives, Farm Bureau and Farm Credit have all benefited from his time served on their boards. In 1983, Lester was inducted into the Maryland Dairy Shrine.

Lester loves to work with youth. His unselfishness and dedication in this area have made him close to a living legend in Frederick County. He serves as superintendent of the 4-H Dairy Cattle Department at the Frederick County Fair, works closely with the 4-H Dairy Bowl teams, and serves on the Frederick County 4-H Camp Center Board. Coaching the Frederick County 4-H Dairy Judging teams for 31 years has allowed him to touch the lives of many. His judging knowledge and teaching skills have earned him much respect as many of his students of dairy judging have gone to National Competition. Dudrow helped coach one Maryland team to a National title.



Maryland's 1991 Outstanding Senior Holstein Breeders award is presented by donor Russell Wachter to Wes Keller, Sylvia Keller, Donald Keller, and Cindy Keller.

Mites On Pet Birds Need Attention

Herbert C. Jordan
Associate Professor
Poultry Science
Penn State

Mites on the skin and feathers of a cockatiel or other pet bird can be aesthetically ugly and emotionally bothersome.

Locating a cage inside a window where wild birds are fed outside can bring ectoparasites such as mites to pet birds inside if there is a way (small opening) to enter the house.

Mites can cause the pet bird to constantly preen, scratch, and peck at itself. Mites can crawl on human skin causing it to itch. Mites on a pet bird can cause the pet bird to be pale, have rough or broken feathers, molt an excess number of feathers prematurely, and fail to

behave normally.

A further series of difficult questions is:

- How do so many mites reproduce? They do so asexually. There is no adult male among northern fowl mites and the female reproduces alone in large numbers.

- Do mites spread disease among host birds? No, not often — the mite is rarely implicated in disease spread. Physically, any insect can carry disease organisms; however, mites are rarely suspected.

- How can mite infestations be prevented? Keep all strange birds and visitors out of the bird's area or pen. Keep host birds healthy, for the mite normally reproduces rapidly on cull or sick birds. Many healthy birds seem to have mite-resistant chemistry or physics or microbiology in their system

which we do not understand.

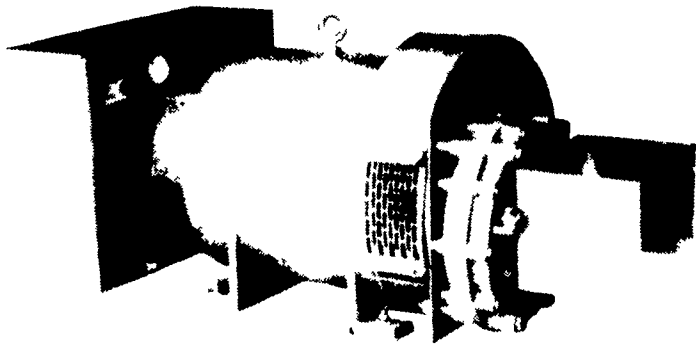
- How can we rid a bird of mites that are present? To rid mites from a bird, bathe the bird in sanitizer and water, then rinse it with plain water. One eighth to one quarter (1/8 to 1/4) cup of Chlorox™ in 6 gallons of water used as a bath or dip works well.

Remove this chlorine mixture from skin 2 to 3 minutes after the treatment by a bath with clear water. (Be careful with this mixture. It can irritate the skin.)

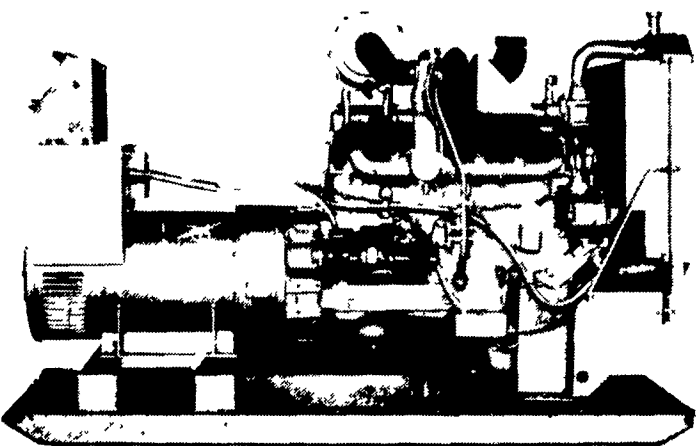
Prevent mites or lice by keeping pet birds away from wild birds or bird feeders.

Commercial pesticide dust can be purchased from poultry or pet supply stores to dust directly on birds' skin. Read and follow label directions on all pesticide containers.

STANDBY GENERATORS



PTO Driven



Automatic Systems

MAXI-POWER INC.

330 Fonderwhite Rd. Lebanon, PA 17042

24 Hr. Service

(717) 273-4544

Radio Dispatch

BIO-NATURAL PRODUCTS TRUST

Invite You To

FIELD DAYS



Topic: Non-Toxic Farming For The 90's

- **Tuesday, September 24, 1991** - Place: Moses B. Fisher, 38th S, Kinzer Road, Kinzer, PA.

Directions: From Rt. 41 & Rt. 30 Take Rt. 30 West Two Miles, Make A Left On Kinzer Road And Go Half A Mile To Farm On The Right.

- **Wednesday, September 25, 1991** - Place: A.B.C. Groff, Railroad Ave., New Holland, PA.

This Is An Open House, Between 1:00 P.M. And 3:00 P.M.

- **Thursday, September 26, 1991** - Place: Bountiful Acres (The Stutzmans), Schwenksville, PA.

Directions: From Rt. 73 At The Light In Schwenksville Take Schwenksville Road East Two Miles To Intersection, Make A Right On Old Skippack Road And Go Half A Mile To Farm On The Right.

TIME: 10:00 A.M. to 3:00 P.M. - Bring Your Own Lunch, Drinks Will Be Provided!

Dr. Phil Wheeler From TransNational Agronomy, Grand Rapids, Michigan, Will Be Speaking From 1:00 P.M. to 3:00 P.M. At The Three Locations! He Services The Technology and Education Services For TransNational Agronomy.

BIO-NATURAL PRODUCTS TRUST

R.D. #2, Box 2501 Fleetwood, PA 19522

(215) 944-0126