

Feeser Shows Top Maryland Hogs

EVA MARTIN
Maryland Correspondent
TIMONIUM, MD. — Monica Feeser received Grand Champion and Reserve Champion 4-H Market Hog Trophies with her entries to the Maryland State Fair. They were her 245 lb. and 225 lbs. animals respectively. She also took with her the award for Heavyweight Champion while Matt Soper placed Heavyweight Reserve with his 4-H market hog weighing 240 lbs.

Melissa Patrick's 220 lb. market hog was named lightweight Champion and Reserve Lightweight went to Michael Weber's 210 lb. entry.

Judge of the 4-H Division was Dan Frobforobose, who has

judged nationally and throughout North America. He is an extension agent serving nine counties in Northwest Ohio. He also raises hogs and ran a swine test station there.

In the open class division, a beautiful duroc exhibited by J. Howard Meredith Sr. was chosen Supreme Champion Female over all breeds with his April gilt.

The Merediths of Wyemills, Maryland also had the Supreme Champion Pair of Barrows with a pair of heavyweight Durocs.

Frank Feeser was awarded Supreme Champion Barrow with his Hampshire entry.

Judge Jerry McLemore, who is in partnership with his brother in a large hog operation in Minnehah,

Oklahoma, said the champions were the kind of breeding stock he would like to take back to his operation. He commended the breeders of Maryland for their accomplishments and success in breeding the quality of animals exhibited.

4-H Market Hog Placings

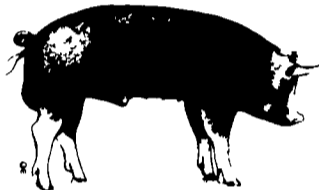
- Class 1- 185-200 lbs.: 1 Tim Clark, 2 Michael Harrison, 3 Jimi West III.
- Class 2- 205-210 lbs.: 1. Michael Weber, 2 J. Howard Meredith Jr., 3 Dale List Jr.
- Class 3- 215 lbs.: 1 Dennis Willard, 2 Jennifer Turner, 3. Dennis Willard.
- Class 4- 220 lbs.: 1. Melissa Patrick, 2 Chris S. Crum, 3 David Peddicord.
- Class 5- 220 lbs.: 1 Harry Ruby, 2. Michael Weber, 3 George Abell
- Class 6- 225 lbs.: 1 Monica Feeser, 2 David Gordon, 3 David Gordon
- Class 7- 230 lbs.: 1 Matthew Soper, 2 Melanie Soper, 3 Eric Widmaier
- Class 8- 230 lbs.: 1 Tim Clark, 2 David Peddicord, 3 Carrie Brown
- Class 9- 235 lbs.: 1. Rebecca Warfield, 2 Tim Clark, 3 Gregory Soper
- Class 10- 235 lbs.: 1 Tara Chaudry, 2 Harry Ruby, 3 Jamie Hertel
- Class 11- 240 lbs.: 1 Matthew Soper, 2 Scott Mullinix, 3 Gregory Soper
- Class 12- 240 lbs.: 1 Scott Mullinix, 2 George Coyle, 3 Patrick Mullinix
- Class 13- 245 lbs.: 1 Monica Feeser, 2 Tracy Clagett, 3 Matthew Soper
- Class 14- 245 lbs.: 1 George Abell, 2 David Peddicord, 3 David Gordon
- Class 15- 250 lbs.: 1 Monica Feeser, 2 Chris Crum, 3 David Peddicord
- Class 16- 255 lbs.: 1 Lindsay Rupp, 2



From the left, judge Jerry McLemore kneels with Frank Feeser, owner of the supreme champion barrow of the Maryland State Fair.



From the left, Jerry McLemore, judge, kneels behind his choice for supreme champion female swine, while owner Howard Meredith Jr. holds the banner.



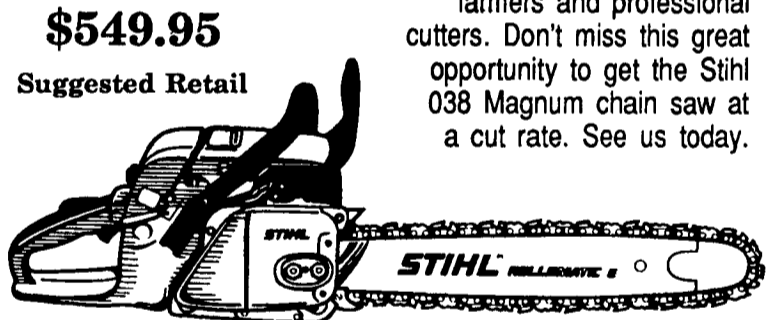
- Patrick Mullinix, 3 Kelly Clagett.
- OPEN CLASS PLACINGS**
- BERKSHIRE DIVISION**
- Grand Champion Boar- James Martin-March.
- Reserve Grand Champion Boar- James Martin- January
- Grand Champion Female- James Martin- March Gilt
- Reserve Grand Champion Female- James Martin- January Gilt.
- Grand Champion Barrow- James Martin- Heavyweight
- Reserve Grand Champion Barrow- James Martin- Lightweight.
- Grand Champion Pair Of Barrows- James Martin- Heavyweight
- Reserve Grand Champion Pair Of Barrows- James Martin- Lightweight
- CHESTER WHITE DIVISION**
- Grand Champion Boar- Leroy Schaefer-April
- Reserve Grand Champion Boar- James Martin- December.
- Grand Champion Female- James Martin- April Gilt
- Reserve Grand Champion Female- Leroy Schaefer- April Gilt
- Grand Champion Barrow- James Martin- Lightweight.

(Turn to Page D7)

SAVE BIG SAWBUCKS

The Stihl 038 Magnum Chain Saw 16" Bar & Chain

Looking for a dependable chain saw that can really cut it? For a limited time you can save up to \$100 on a durable, hard-working Stihl 038 Magnum chain saw. It has more power than many other models in its class without the additional weight. Plus, its advanced features help to make it popular with farmers and professional cutters. Don't miss this great opportunity to get the Stihl 038 Magnum chain saw at a cut rate. See us today.



\$549.95
 Suggested Retail

Available at these servicing dealers

- Bechtelsville**
 PASSMORE SERVICE CENTER, INC.
 RD 1, Rt. 100
 215-367-9084
- Hamburg**
 SHARTLESVILLE FARM SERVICE
 RD 1, Box 1392
 215-488-1025
- Somerset, PA**
McCooie, MD
 LINCOLN SUPPLY & EQUIPMENT CO.
 Somerset, PA 814-443-1691
 McCooie, MD 301-786-6800
- East Earl**
 GOODS LAWN & GARDEN CENTER
 Route 23
 717-354-4026 Ext. 34
- Jonestown**
 BLUE MOUNTAIN ENTERPRISES, INC.
 Rt. 72 South
 717-865-2994
- Tamaqua**
 CHARLES S. SNYDER, INC.
 RD 3
 717-386-5945
- Elizabethtown**
 MESSICK FARM EQUIPMENT, INC.
 Rheame Exit-Rt. 283
 Elizabethtown, PA
 717-367-1319, 717-653-8867
- Myerstown**
 EBLING LAWN & GARDEN SERVICE
 688 E. Lincoln Ave.
 717-866-6720
- Watsonstown**
 BEILER'S REPAIR
 1 Mi. W. of Turbotville
 On Rt. 44
 RD 2, Box 54
- Elm/Lebanon**
 BOMBERGER'S LAWN & GARDEN
 Elm: 717-664-4663
 Lebanon: 717-272-4155
- Ono**
 SHUEY'S SALES & SERVICE
 Jonestown Rd.
 717-865-4915
- West Chester**
 M.S. YEARSLEY & SONS
 110-120 E. Market St.
 215-696-2990
- Ephrata**
 WES STAUFFER ENGINES & EQUIPMENT
 23 Pleasant Valley Rd.
 717-738-4215
- Oxford**
 OXFORD GREENLINE, INC.
 1100 Limestone Rd.
 215-932-2573
- Chestertown, MD**
 PARDOE'S LAWN & TREE SERVICE, INC.
 301-777-2018
- Ephrata, Hershey, Lancaster**
 HOLLINGER'S LAWN & GARDEN EQUIP.
 Ephrata, PA 717-738-1131
 Hershey, PA 717-533-4060
 Lancaster, PA 717-656-2710
- Peach Bottom**
 WAKEFIELD SAW SHOP
 742 Nottingham Rd
- Oakland Md.**
 VALLEY VIEW COUNTRY STORE
 RD 2
 301-334-4381
- Gap**
 GAP POWER EQUIPMENT
 Corner of Rt. 30 & Rt. 897
 717-442-8970
- Ronks**
 A & B SALES & SERVICE
 370 Newport Road
 2 Miles South of Rt. 23 Along 772 Thru Monterey
- Whiteford Md.**
 ENFIELD EQUIPMENT INC.
 720 Wheeler School Rd.
 301-879-5090
- District Managers**
 Dennis Skibo
 717-684-2333
 Jim Bisku
 814-696-9447



Distributed By
 Keystone Stihl

For the part of you that promised you'd never compromise.

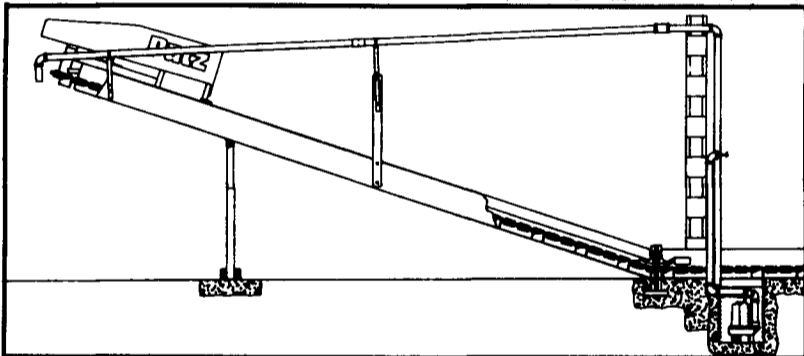


Patz

MODEL 9000 LIQUID TRANSFER SYSTEM

Removes liquids from the gutter so the manure goes up the slide.

East installation, low investment, low maintenance.



The Patz Liquid Transfer System removes liquids. The gutter cleaner takes care of the rest. There are more advantages to the Patz Liquid Transfer System.

Maintenance is low. The pump is heavy duty with an oil bath motor. It uses 230 volts the same as the gutter cleaner but the motor draws less than 6 amps.

To eliminate corrosion the system has a pump with stainless steel parts and utilizes PVC piping that won't rust.

Should the pump need service, it lifts out easily. If the pump is out for service you can still operate the gutter cleaner.

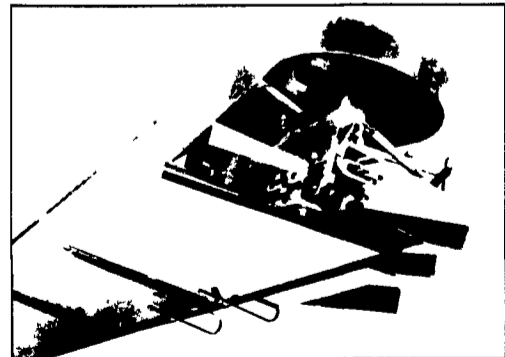
The Patz Liquid Transfer System does not require extra space in your barn.

The system is easy to install anytime. Winter or Summer. Your system is ready to use the day after installation.

So if you have a problem with manure roll back on your gutter cleaner slide, your Patz Dealer now has the solution. The Patz Model 9000 Liquid Transfer System.



Patz MODEL 400 BARN CLEANER



Why Patz is No. 1

- Durable Patz hook and eye link chain. Progression forging builds extra strength into hook and eye link contact points. Final heat treating increases hardness strength and wear resistance.
- Four tooth sprocket drives every link behind the hook-the link's thickest and strongest point.
- Chain flexibility for various layouts.
- Select 2 flites for solid manure or 4 high flites for slurry manure. 1/2 inch thick flites are welded to Patz links. 1/2 inch thick wear shoes extend flite life.
- Three drive unit sizes match your gutter length and allow expansion.
- Corner wheel top-and bottom flanges guide the chain around the corner. Corner wheel assemblies remove easily for service without concrete breakout.
- Heavier XH link available for extremely long pulls.

SEE YOUR NEAREST PATZ DEALER

ALEXANDRIA
 MAX ISENBERG
 814-668-4027

CAMP HILL
 JOHN JONES
 717-737-5737

MIFLINTOWN
 ZUG FARM & DAIRY EQUIPMENT
 717-463-2606

SOMERSET
 GROVE EQUIP. SALES
 Mark Knepper
 Cliff Lynn
 814-445-6306

LINEBORO, MD
 TRI-CO. DAIRY EQUIPMENT
 301-374-6618

BALLY
 LONGACRE ELECTRIC
 215-845-2261

ELLIOTTSBURG
 CARL R. BAER
 717-582-2648

QUARRYVILLE
 UNICORN FARM SERVICE
 James E Landis
 717-786-4158

HAGERSTOWN, MD
 TRI-STATE FARM AUTOMATION
 301-790-3698

WHITEFORD, MD
 ENDFIELD EQUIP.
 301-438-0480

BEDFORD
 BENCE'S FARM EQUIP.
 814-623-8601

KINGSLEY
 POWERS EQUIPMENT
 717-434-2082

SHIPPENSBURG
 WITMER EQUIPMENT SERVICE
 717-532-6139

KENNEDYVILLE, MD
 PINDER SERVICE CO.
 301-348-5263

DISTRICT MANAGERS
 Dennis Skibo
 717-684-2333
 Jim Bisku
 814-696-9447

BELLEVILLE
 LUCAS BARN EQ
 814-383-2806

LEBANON
 CEDAR CREST EQUIPMENT
 717-270-6600

BELLEVILLE
 MILLER-LAKE Inc
 717-935-2335