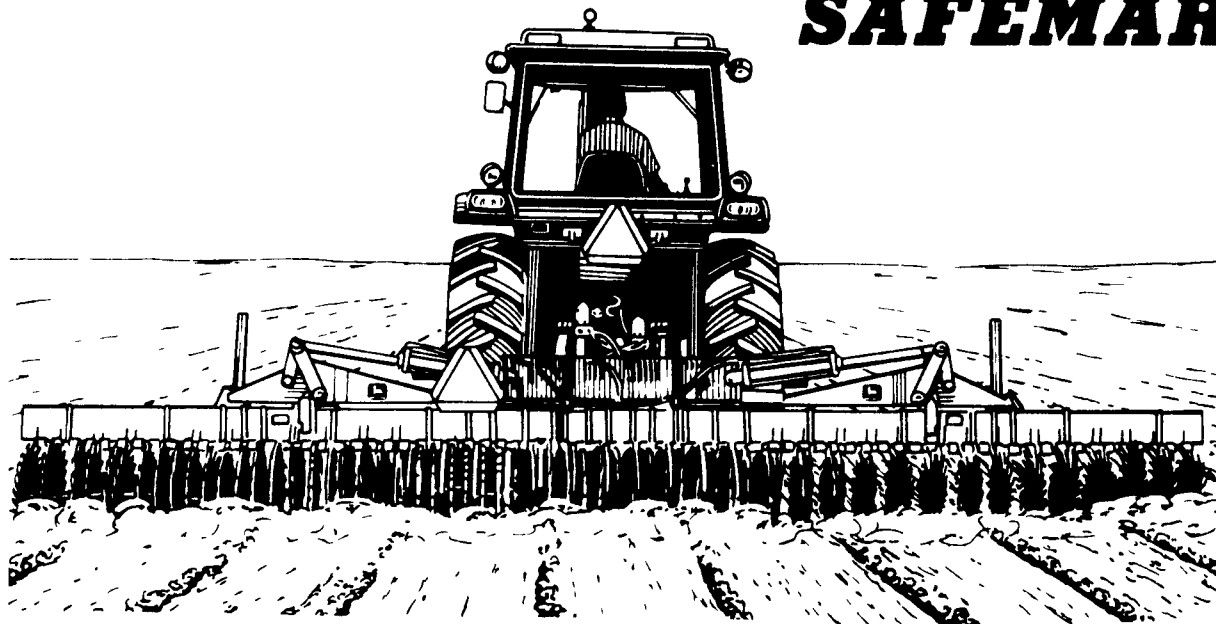


SAFEMARK

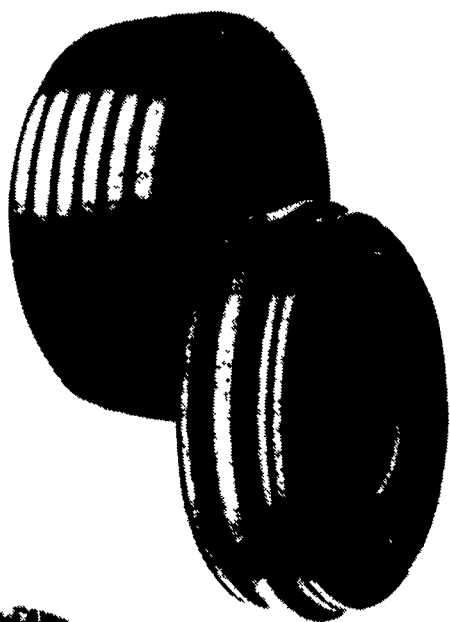


FACTORY TO FIELD TIRE SALE

FARM UTILITY TIRE

Strong, Long Wearing

\$38.00
9.5L-14 TUBETYPE
6-PLY



SIZE AND DESCRIPTION	SALE PRICE
9.5L-14 Tube Type 8 Ply	\$43.00
9.5Lx15 Tube Type 8 Ply	\$43.00
11Lx14 Tube Type 8 Ply	\$46.00
11Lx15 Tube Type 8 Ply	\$46.00
12.5Lx15 Tube Type 10 Ply	\$70.00
12.5Lx16 Tube Type 14 Ply	\$85.00

SAFEMARK

Premium Three-Rib Tractor Front Tire

\$31.00 500x15
Tubetype
4 Ply

SIZE AND DESCRIPTION	SALE PRICE
600x16 Tube Type 6 Ply	\$43.00
750x16 Tube Type 6 Ply	\$63.00
1000x16 Tube Type 8 Ply	\$95.00
1100x16 Tube Type 8 Ply	\$115.00

MULTI-ANGLE MB

- Excellent drawbar pull with long-bar, short-bar lugs for improved traction
- Designed for improved stability and roadability, plus reduced vibration.
- Strong angle-braced lugs have self-cleaning design.
- High-strength polyester cord body and heavy duty rim shield help protect tire from damage



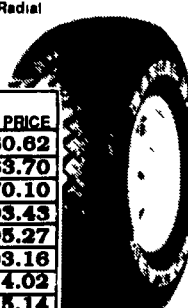
SIZE AND DESCRIPTION	SALE PRICE
11.2-24 Tube Type 4 Ply	\$131.00
12.4-28 Tube Type 4 Ply	\$168.00
15.5-38 Tube Type 6 Ply	\$279.00
18.4-34 Tube Type 6 Ply	\$368.00
18.4-38 Tube Type 6 Ply	\$435.00
20.8-38 Tube Type 8 Ply	\$589.00

SAFEMARK STEP UP TO QUALITY

SUPER SPORT AT RADIAL

- Excellent Off-Road Traction And Lug, Even Wear On The Highway
- Two Steel Belts For Strength And Stability
- Smooth Riding Polyester Radial Cord Plugs
- Wide, Flat Footprint Gives Positive Traction In All Positions

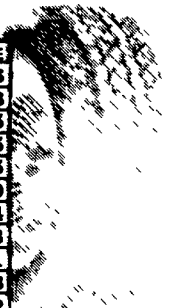
OUTLINE WHITE LETTER SIZE	PRICE
P20575R15 SL	\$80.82
P21575R15 SL	\$83.70
P23575R15 SL	\$70.10
LT23575R15 (C)	\$93.43
30x950R15 (C)	\$95.27
31x1050R15 (C)	\$103.16
31x1150R15 (C)	\$114.02
33x1250R15 (C)	\$125.14
LT23585R16 (E)	\$108.74



ECONOMY RADIAL

- All-Season Tread Design Fights Hydroplaning
- Double Steel Belts Protect Against Bruises And Punctures
- Distinctive Outline Black Lettering

WHITEWALL SIZE	PRICE
P15580R13	\$33.66
P18580R13	\$35.03
P17580R13	\$36.65
P18580R13	\$38.45
P18575R14	\$39.55
P19575R14	\$41.39
P20575R14	\$43.64
P21575R14	\$45.98
P20575R15	\$44.81
P21575R15	\$47.13
P22575R15	\$49.42
P23575R15	\$51.85



SBR IV

- Two Tough Steel Belts For Puncture Resistance
- Polyester Cord Piles For Smooth Ride
- Distinctive Sidewall Styling For Premium Appearance

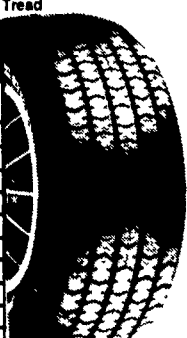
WHITEWALL SIZE	PRICE
P15580R13	\$43.01
P18580R13	\$44.78
P17580R13	\$46.82
P18580R13	\$49.12
P18575R14	\$50.54
P19575R14	\$52.90
P20575R14	\$55.76
P20575R15	\$57.28
P21575R15	\$60.19
P22575R15	\$63.13
P23575R15	\$66.22



PACEMARK

- "SR" Speed Rated For Quality And Integrity
- M+S Rated For All Season Traction
- High Traction, High Mileage Tread Compound

OUTLINE WHITE LETTER SIZE	PRICE
P17570R13	\$46.85
P18570R13	\$48.23
P18570R14	\$50.55
P19570R14	\$53.17
P20570R14	\$55.97
P21570R14	\$58.94
P22570R14	\$63.62
P21580R14	\$58.53
P21585R15	\$62.91
P18580R15	\$53.50



Barum INDUSTRIAL R4

Size	Ply	Sale Price
14.9-24	8 Ply TT	\$249.00
16.9-24	8 Ply TT	\$260.00
16.9-28	8 Ply TT	\$320.00
17.5L-24	8 Ply TT	\$249.00

Contact A Participating Dealer Listed Below

or
(Call 1-800-PFA-TIRE for dealer nearest you.)

Adams
Mar-Bar Tire Service
Hanover, PA 17331
(717) 633-6412

Lancaster
Leola Tire Service
Leola, PA 17540
(717) 656-2574

Yinglings Implement
Gettysburg, PA 17325
(717) 359-4848

Lebanon
Lebanon Valley
Implement Co., Inc.
Richland, PA 17087
(717) 866-7518

Blair
Rhode's Farm Supply
Williamsburg, PA 16693
(814) 832-2491

Lehigh Co.
Kermit K. Kistler
Lynnport, PA 18066
(215) 298-2011

Bradford/Sullivan
Hiland Farm &
Home Service
Rome, PA 18837
(717) 744-2371

Centre
Dunkle & Grieb
Centre Hall, PA 16828
(814) 364-1421

Mifflin
Miller-Lake, Inc.
Belleville, PA 17004
(717) 935-2335

Chester/Delaware
S.G. Lewis & Sons
West Grove, PA 19390
(215) 869-2214

Northampton/Monroe
Northampton
Farm Bureau
Tatamy, PA 18085
(215) 759-3254

**Stoltzfus Farm
Service**
Cochranville, PA 19330
(215) 593-2407/2408

Northumberland
Rovendale Supply
Watsonville, PA 17777
717-538-5521
800-232-DALE

Clinton
Dotterer Equipment,
Inc.
Mill Hall, PA 17751
(717) 726-3471

Potter
Groff Supply
Westfield, PA 16950
814-367-5468

Cumberland
Barrick Tire Sales
Newville, PA 17241
(717) 776-5762

Somerset
Maple City Tire
Meyersdale, PA 15522
(814) 634-0545

Erie
Wade & Blakeslee
Corry, PA 16407
814-664-7653

**Lincoln Supply
& Equip. Co.**
Somerset, PA 15501
(814) 443-1691

Mike's Auto Repair
North East, PA 16428
(814) 725-9091

Franklin
Forrester Farm
Equip., LTD
Chambersburg, PA 17201
717-263-0705

Union
Mifflinburg Farm
Supply, Inc.
Mifflinburg, PA 17844
(717) 966-3114/3115

Stoneham's
Waynesboro, PA 17268
(717) 762-3614

Washington
Canonsburg Supply &
Equipment Co., Inc.
Canonsburg, PA 15317
(412) 746-2500

**Bruce B. Gamble
& Sons**
Concord, PA 17217
(717) 349-2670

Eulton
Clugston Farm
Equipment
Needmore, PA 17238
(717) 573-2215

Wyoming Co.
J. Roberts & Son
Tire Co.
Meshoppen, PA 18630
(717) 833-5582

Jefferson
McGarvey Equipment
Reynoldsville, PA 15851
814-653-9637

York Co.
Isenock Service
Center
Glen Rock, PA 17327
(717) 235-1047

Juniata
Juniata Tire sales
Mifflintown, PA 17059
717-436-6080

Corn Hill Farm, Inc.
Etters, PA 17319
(717) 938-2012



SAFEMARK

Division of Pennsylvania Farmers'
Association
Camp Hill, PA 17011
1-800-PFA-TIRE
For Dealer Nearest You

A Proud Tradition of Quality,
Value and Service.

- QUALITY
- SERVICE

- DEPENDABILITY
- ECONOMY

**NOW SERVING
NEW YORK &
NEW JERSEY**