

**National Grain Market**

St. Joseph, Mo.

Wednesday, September 11, 1991

USDA DAILY NATIONAL GRAIN MARKET SUMMARY GRAIN AND SOYBEAN PRICES MODERATELY TO SHARPLY HIGHER WEDNESDAY ON GOOD EXPORT DEMAND. WHEAT 2 TO 3 CENTS HIGHER. CORN STEADY TO 4 CENTS HIGHER. SORGHUM 3 TO 5 CENTS HIGHER. SOYBEANS 3 TO 10 CENTS HIGHER. WHEAT PRICES ADVANCED ON GOOD EXPORT DEMAND AND SPILLOVER STRENGTH IN CORN AND BEAN PITS. VERY GOOD EXPORT DEMAND FOR CORN AS SOVIET UNION HAS REPORTEDLY BOUGHT 4 MILLION BUSHELS UNDER U.S. CREDIT PROGRAM. HIGHER CORN PRICES REFLECTED OPTIMISM FOR FURTHER CORN PURCHASES FROM U.S.S.R. RECENT RAINS THIS WEEK MAY DELAY CORN HARVEST. BEAN PRICES STRENGTHENED ON LARGE SOYMEAL SALES TO SOVIETS UNDER U.S. CREDIT PROGRAM WITH HOPES FOR ADDITIONAL PURCHASES.

EXPORT NEWS: THE JAPANESE FOOD AGENCY BOUGHT 152,400 TONNES U.S. WHEAT FOR NOVEMBER. JAPAN BOUGHT 152,400 METRIC TONS CORN FOR 91/92 MARKETING YEAR. U.S.D.A. REPORTED THE SALE OF 100,000 TONNES U.S. CORN TO UNKNOWN DESTINATION AND 100,000 TONNES OF FOREIGN SELLERS' CORN WAS PURCHASED FOR DELIVERY TO UNKNOWN DESTINATIONS IN 91/92 MARKETING YEAR. U.S.D.A. REPORTED THAT THE SOVIET UNION BOUGHT 332,000 TONNES CORN UNDER ALREADY ESTABLISHED CREDIT LINES.

DATE CHANGE YEAR AGO 09/11/91 09/10/91 09/12/90 WHEAT: KANSAS CITY 3.22-3.25 UP 2-3 2.83-2.85 MINNEAPOLIS 3.28 1/2-3.32 1/2 UP 3 1/2 2.88 1/4-2.89 1/4 PORTLAND 3.62-3.65 DN 1 3.13-3.16 ST. LOUIS 2.89-2.92 UP 3 2.71-2.74.

CORN, U.S. NO. 2 YELLOW: KANSAS CITY 2.52-2.54 UP 2-3 2.34-2.39 MINNEAPOLIS 2.37 1/4 UP 4 1/2 2.33 1/4 SO. IOWA 2.42-2.46 UP 4-3 2.32 2.36 OMAHA 2.34-2.38 NC-UP 2 2.23-2.29.

SOYBEANS, NO. 1 YELLOW: KANSAS CITY 5.91-5.95 UP 9 6.

31-6.36 MINNEAPOLIS 5.77 UP 10 6.25 1/4 SO. IOWA 5.80-5.85 UP 9-8 6.26-6.31 C. ILL. PROCESSORS 5.84-5.91 UP 1-3 6.43 1/2-6.53 1/2.

\*KANSAS CITY, US NO. 1 HARD RED WINTER WHEAT, ORDINARY PROTEIN. MINNEAPOLIS, US NO. 1 DARK NORTHERN SPRING WHEAT, 14% PROTEIN. PORTLAND, NO. 1 SOFT WHITE WHEAT, ST. LOUIS, NO. 2 SOFT RED WINTER WHEAT.

FUTURES CLOSE: KANSAS CITY (DEC) WHEAT 3.22 UP 2 1/2 2.83 1/2 MINNEAPOLIS (DEC) WHEAT 3.10 1/2 UP 3 1/2 2.78 1/4 CHICAGO (DEC) WHEAT 3.26 UP 3 1/4 2.83 (DEC) CORN 2.52 1/4 UP 2 1/2 2.34 1/4 (NOV) SOYBEANS 5.91 UP 9 6.41 1/4 DEC.

EXPORT: BARGE OR RAIL, PORT OF NEW ORLEANS OR NORTH TEXAS GULF. NO. 1 HARD RED WINTER WHEAT ORDINARY PROTEIN 3.56-3.57 UP 2-3 3.14-3.16 NO. 2 SOFT RED WINTER WHEAT 3.68-3.69 UP 3-4 3.05-3.07 NO. 2 YELLOW CORN 2.78-2.80 UP 1-2 2.63 NO. 2 YELLOW SORGHUM RAIL 4.84 UP 3 BARGE 4.86 UP 3 4.54-4.66 NO. 2 YELLOW SOYBEANS 6.25-6.26 UP 9-8 6.58-6.59 BAB 1450C BAB.

**Keister's Hay**

Middleburg, PA

Tuesday, September 10

Report supplied by auction

37 LOADS.  
ALFALFA: 100.00-127.50.  
MIXED HAY: 65.00-130.00.  
TIMOTHY: 70.00-107.50.  
MULCH: MOLDY 40.00-50.00.  
STRAW: 2 LOADS, 85.00 AND 92.50.  
EAR CORN: 87.50-110.00.  
RYE: 5.50 BU.  
OATS: 2.10 BU.

**Belleville Hay**

Wednesday, September 11

Belleville, PA

Report Supplied by Auction

TOTAL LOADS: 37.  
ALFALFA: 95.00-117.50.  
MIXED HAY: 70.00-132.50.  
STRAW: 3 LOADS, 90.00-112.50.  
EAR CORN: 2 LOADS, 97.50 EACH.  
OATS: 1.90 BU.

**Vintage Hay**

Paradise, PA

Thurs., September 12, 1991

Report Supplied by Auction

3 LOADS.  
ALFALFA HAY: 1ST CUTTING 109.00, 4TH CUTTING 85.00.  
CORN: 80.00.

**St. Louis Cattle, Hogs**

Thursday, September 12, 1991

OPENING MID-SESSION WEEKLY CLOSE CATTLE AND CALVES: 450 (0 SLTR, 450 FDRS) RECEIPTS CONSISTS OF FEEDER CATTLE AND COWS FOR THE REGULAR THURS DAY AUCTION.

SLAUGHTER CLASSES: COWS: CUTT, UTIL, COMM BULK SALES H-DRESS % LO-DRESS % BREAKING 2-4 BONING 1-2 LOW TO AVG. CUTTER. RECEIPTS THIS WEEK 1,000: WEEK AGO 700: YEAR AGO 1,300. COMPARED WITH LAST WEEK'S

TERMINAL MARKET CLOSE, SLAUGHTER STEERS 2.00-2.50 HIGHER EXCEPT HOLSTEIN STEERS 1.00-2.00 HIGHER. SLAUGHTER HEIFERS FULLY 2.00 HIGHER. COWS STEADY TO WEAK. BULLS STEADY. SLAUGHTER SUPPLY MAINLY CHOICE AND MIXED SELECT AND CHOICE STEERS AND HEIFERS WITH REDUCED SUPPLY OF YG 3-4 OF BOTH LOTS CLASSES, AROUND 15% COWS.

**North Jersey Market**

Hackettstown, N.J.

Tuesday, September 10, 1991

Hay—Straw & Grain Report

GRASS HAY: 1.35-1.80 BALE.  
MIXED HAY: 1.75-2.00 BALE.  
OAT STRAW: 2.00 BALE.  
OATS: 1.50-7.00 BAG.  
SHELLED CORN: 5.25 BAG.  
TOTAL: 11 LOTS.

**New Holland Horses**

New Holland Sales Stables

New Holland, PA

Monday, September 9, 1991

REPORT SUPPLIED BY AUCTION 365 HEAD; MARKET STEADY ON ALL HORSES AND PONIES. SLAUGHTER HORSES ACTIVE AND HIGHER.

LOCAL DRIVING AND RIDING HORSES 450.00-650.00.

SEVERAL BETTER HORSES 650.00-950.00.

WORK HORSES FEW 750.00-900.00. TWO LOAD STANDARD BREDS 550.00-750.00, FEW BETTER UP TO 750.00.

SMALL PONIES 75.00-300.00.

LARGER PONIES 300.00-410.00.

PONY COLTS 85.00-185.00.

DONKEYS 110.00-225.00.

HEAVY KILLERS 575.00-760.00.

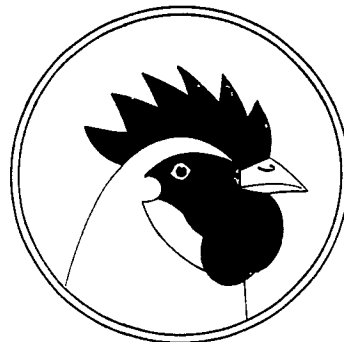
TWO OUTSTANDING 960.00 AND 1060.00.

LIGHTWEIGHT KILELRS 375.00-575.00.

FEW THIN UNDER 250.00.

**Risser's Poultry Inc.**

P.O. BOX 52 • LITITZ, PA 17543



Over 60 years of prompt dependable service.

Tel. 717-626-5466

Buyers and Haulers of Leghorn, Medium, and Heavy Fowl.

Now using carts for the most efficient means of moving spent fowl.

FAX 717-627-3599

Junlata County  
50 Cow Herd Dispersal  
Top Load Canadian Cows  
13 Cows From Chester Co.  
Nice Group Helfers  
From 1 Herd.  
See Page B46 For Details.

**NEW HOLLAND SALES STABLES INC. THE ACTION AUCTION**

**HORSE SALE**  
Fri., Nov. 8 - 7:00 P.M.  
Tack 6 P.M.  
Horses Hitched 12 Noon

LIVESTOCK IS OUR ONLY BUSINESS

**MONDAY**

SLAUGHTER HOGS

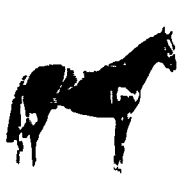


EARLY BIRD HOG SALE  
8:00 A.M.

Sell Your Hogs At New Holland Sales Stables, Inc. See them weighed, sold and pickup your check.

**10:00 AM**

HORSES  
MULES



**1:30 PM**

BEEF SALE

SHEEP  
GOATS  
CALVES



**WEDNESDAY**

HEIFER SALE  
11:00 AM

COW SALE 12:00 NOON

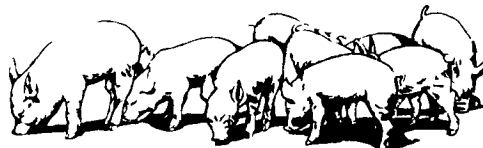
HEIFERS  
BULLS  
DAIRY  
COWS



We have the usual run of 50 to 100 Heifers, all ages. Loads of fresh cows and springers from our regular shippers. Also some local fresh cows and springers.

**1:30 P.M.**

FEEDER PIG SALE



Pigs are accepted after 6:30 A.M. State graded from 8 to 12 Dairy Barn and Feeder Pig Barn are cleaned and disinfected weekly for your protection.

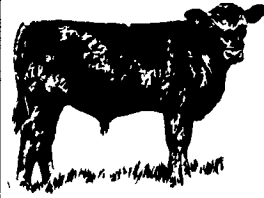
**THURSDAY**

Beef Auction  
10:00 A.M.

BULLS  
STEERS  
BEEF COWS

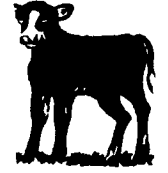
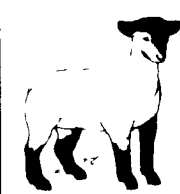


1:00 P.M.  
STOCKERS  
&  
FEEDERS



**12:00 NOON**

SHEEP  
GOATS  
CALVES



**NEW HOLLAND SALES STABLES, INC.**

12 Miles East of Lancaster Off Route 23, New Holland, Penna.

**MANAGERS**

Norman & David Kolb - 717-397-5538

**Field Representatives**

Luke Eberly - 215-267-6608 738-1865

Homer Eberly - 215-267-3047

Ron Ranck - 717-656-9849

**Sale Barn Office Manager**

Roger Floyd - 717-354-4341

FAX # 717-355-0706

**Order Buyer**

Paul Good - 215-445-6662