

**Philadelphia
Potato & Onion**

Philadelphia, Pa.

Thursday, September 12, 1991

NO WIRES WILL BE ISSUED ON FRIDAY, SEPTEMBER 13, 1991. REPORTERS WILL BE ATTENDING NATIONAL MARKET NEWS CONFERENCE.

ONIONS-DRY ABOUT STEADY 50-lb sacks US#1 or generally good quality and condition Yellow unless otherwise stated CA Grano type jbo 7.50- 8.00 repacker sz 8.00 CO Spanish Hybrid type colossal 8.50-9.00 jumbo 7.00-8.00 mos 7.50-8.00 repacker sz 7.00-8.00 White jbo few 15.00-16.00 25- lb sks Red jumbo 9.00 medium 6.00-7.00 mos 7.00 White Boilers 12.00-13.00 ID-OR Spanish Hybrid type jumbo 7.50-8.00 mos 8.00 few 8.50 fair appearance 7.00 White jbo 14.00-15.00 25-lb sks Red jbo 8.00 med 6.00 NM Spanish Hybrid type Jumbo fair cond 7-7.50 White jbo 13.00-15.00 mos 13.00-14.00 NY Globe type sml-med 6.25-7.50 mostly 7.00 25-lb sks Red lge 8.50-9.00 few 9.50 med-lge 7.00-8.00 med 5.00-6.00 mos 5.00-5.50 WA Spanish hybrid type jbo 7.50-8.00 repacker type 8.00.

POTATOES RUSSETS SLIGHTLY LOWER, OTHERS ABOUT STEADY 50-lb sacks US#1 size A washed or brushed unless otherwise stated ROUND WHITES DE 5- 5.25 fair quality 3.25 lge 6.00 10-lb paper sacks loose 1.20 paper sks baled 10-5 lb 7.25-7.50 LI 5-5.50 mos 5.50 lge 6-6.50 baled paper sacks 10-5 lb 8.00 lse 10-lb paper sacks 1.20 NJ one labe 6.00 lge 6.50 10-lb paper sacks loose 1 15-1.20 CANADA CD#1 New Brunswick fair qual 4.50 Prince Edward Isle 5.50 lge 7.00 ROUND REDS NY 5.50-6.00 mos 5.50-6.00 sz B 9.00-10.50 mos 10.00 MN-ND 5.50-6.00 sz B 11.00 WI 6-6.50 sz B 11.50- 12.00 10-5 lb plastic bags 7.50-8.00 RUSSETS Norkotah 50-lb carton count unless otherwise stated CA 70-80s 8.50 90s 7.50 100s 6.50 10-5 lb film bags baled Non Sz A 8.00 ID 70s 14.00 80s 13.00-13.50 few 14.00 90s 12.00-12.50 few 13.00 100s 11.00-11.50 few 12.00 baled 10-5 lb film bags non sz A 9.50 old crop Burbank 100s 11.00 CO 70-80s 8.00 90s 7.00 100s 6.00 MN-NM-TX 70-80s 7.00 90s 6.00 100s 5.00 OR 70-80s 7.00 90s 6.00-7.00 100s 5.00-6.00 10 oz min 8.00 WA 70-80s 8.00-9.00 mos 8.50-9.00 90s 7.00-8.00 mos 7.50-8.00 100s 6.00-7.00 mos 6.50-7.00 WI 70-80s 7.00-9.00 mos 8.00 90s 6.50-8.00 mos

7-7.50 100s 5.50-7.00 mos 6.00 120s 5.50-6.00 baled 10- 5 lb film bags 7.00-8.00.

Valley Stockyards

Athens, Pa.

Monday, September 9, 1991

Report supplied by auction
HOLSTEIN HEIFER CALVES TO 175.00.
VEAL CALVES TO 90.00.
VEALER BULL CALVES TO 180.00.
SLAUGHTER CALVES 85.00 AND DOWN.
GRASSERS & FEEDERS 50.00-75.00.
LAMBS 42.00-50.00.
SHEEP 14.00-19.00.
HOGS 200-250 LBS. 48.00-52.00.
SOWS 32.00-40.00.
BOARS 25.00-34.00.
PIGS EACH 12.00-30.00.
HEIFERS 48.00-57.00.
MEDIUM STEERS TO 66.50.
FEEDER STEERS 50.00-83.00.
BULLS 48.00-57.00.
GOOD COWS 48.00-50.00, FEW TO 54.00.
COWS MEDIUM 44.00-46.00.
COWS POOR OR SMALL 38.00 AND DOWN.
HORSES TO 620.00.
PONIES TO 195.00.
GOATS TO 67.50.
GOOD COWS AND HALF MARKET STEADY; SOME COWS CHEAPER; BETTER COWS STEADY.

**Belknap
Livestock Auction**

Dayton, Pa.

Wednesday, September 11, 1991

Report Supplied by PDA
CATTLE 103...PDA...Compared with last Wednesday's market: Few Choice 960/1095 lbs. slaughter steers 64.00-65.50, few Select 62.25-64.50; one Standard Holstein 60.75. One Select sl. heifer 60.00; one Select Holstein 56.50, one Standard 53.25.
Breaking Utility and Commercial slaughter cows 47.25-52.00, one 53.00, low dressing to 43.25, Cutter and Boning Utility 45.00-49.50, Canner and low Cutter 38.00-45.00, Shells down to 32.50. Few Yield Grade No. 1, 1190/1810 lbs. sl. bulls 61.50-62.50. FEEDER CATTLE: Medium Frame No. 2, 450/730 lbs. heifers

47.00-57.00. Medium & Large Frame No. 1, 410/705 lbs. bulls 63.75-72.00.
CALVES 125... Supply included 80% sold to returned to farm ...One Choice vealer 102.00, few Good 88.00-99.00, Standard and Good 90/110 lbs. 86.00-91.00, 60/85 lbs. 69.00-86.00. Farm Calves: No. 1, Holstein Bulls 85/135 lbs. 110.00-147.00, No. 2, 85/125 lbs. 88.00-110.00; No. 1, Hol. Heifers 80/145 lbs. 122.50-200.00. Beef cross 80/135 lbs. bulls & heifers 115.00-175.00, few 225/270 lbs. 82.50-97.00.
HOGS 198...Barrows and gilts: Lot US No. 1-2 245 lbs. barrows and gilts 47.00, 1-3 215/260 lbs. 45.00-45.80, lot 47.50, 2-3 240/270 lbs. 43.70-45.10. Sows: US No. 1-3 300/560 lbs. sows 36.75-41.75, one 2-3 450 lbs. 35.25. Couple Boars 30.00-34.50.
FEEDER PIGS 68...US No. 1-3 20/35 lbs. feeder pigs 15.00-29.00, 40/55 lbs. 30.00-39.00. - all per head.
SHEEP 11...Slaughter sheep 10.00-14.0, one 26.00. - all Cwt.
GOATS 1. One Medium 28.00 - all per head.

**Keister's
Middleburg Auction**

Middleburg, Pa.

Tuesday, September 10, 1991

Report Supplied by PDA
CATTLE 367... PDA ...Compared with last Tuesday's market: Slaughter steers steady to 1.00 higher; Cows about steady. Choice 1100/1400 lbs. slaughter steers 65.75-70.50, one 72.00, Select 63.00-66.50, few Standard 58.00-59.00; Choice Holsteins 62.75-65.00, Select 60.00-63.00. Choice sl. heifers 63.00-69.25, couple 70.00&71.75. Breaking Utility & Commercial sl. cows 49.00-52.50, couple beef type 58.50&59.00, Cutter & Boning Utility 48.75-53.75, Canner & low Cutter 43.75-48.00, Shells down to 41.00. Few Select sl. bullocks 61.50-67.00. Yield Grade No. 1, 1100/1835 lbs. sl. bulls 60.00-68.00, few No. 2, 875/1925 lbs. 56.00-57.50. Feeder Cattle: Few Medium Frame No. 1. 450/900 lbs. steers 68.00-76.00. Few Medium Frame No. 1, 500/800 lbs. 60.00-65.00.
CALVES 212...Few Standard and Good 75/100 lbs. vealers 80.00-89.00, few Utility 60/80 lbs. 70.00-77.00. Farm Calves: Holstein bulls No. 1, 85/130 lbs. 140.00-183.00; No. 2, 80/120 lbs. 85.00-135.00, No. 1, Hol. Heifers 75/130 lbs. 115.00-145.00, couple 186.00. Few

Beef cross 90/170 lbs. bulls and heifers 115.00-190.00.
HOGS 391...BARROWS & GILTS: 2.00 lower. US No. 1-2, 220/250 lbs. barrows and gilts 46.50-47.25, No. 1-3, 215/250 lbs. 45.50-46.50, 2-3 200/260 lbs. 44.50-45.50, 2-4 200/270 lbs. 40.00-44.50. US No. 1-3 300/650 lbs. sows 36.00-39.50, No. 2-3 300/575 lbs. 30.00-36.00. Boars 33.00-34.00.
FEEDER PIG 342...US No. 1-3 20/40 lbs. feeder pigs 24.00-36.00, 45/65 lbs. 41.00-54.00 --- all per head.
SHEEP 83...SPRING SLAUGHTER LAMBS...Choice 70/115 lbs. spring slaughter lambs 46.00-50.00, Good 40/60 lbs. 35.00-42.00. Slaughter sheep 12.00-17.00. - all cwt.
GOATS 9...Few Large 62.50-77.50, few Medium 17.50-30.00. --- all per head.

**Oklahoma City
Feeder Cattle**

Oklahoma City, Okla.

Wednesday, September 11, 1991

OKLAHOMA NATIONAL STOCKYARDS COMPARED TO LAST WEEK: FEEDER STEERS OVER 600 LB. CLOSED WEAK TO \$1.00 LOWER WITH EXCEPTION OF 800-900 LB. STEADY TO \$1.00 HIGHER. HEIFERS OVER 500 LB. STEADY TO \$1.00 HIGHER. STEERS UNDER 600 LB. AND HEIFERS UNDER 500 LB. WHICH WERE LARGELY CALVES SOLD \$2.00-\$4.00 HIGHER. YEARLING DEMAND MODERATE EARLY, WEAKENED THROUGHOUT THE BALANCE OF THE TRADING SESSIONS TO CLOSE FAIR. CALF DEMAND VERY GOOD. WEIGH CONDITION REMAINS AVERAGE TO FULL AND NOT BENEFICIAL TO THE YEARLING BUYERS. FLESH CONDITIONS WERE HIGHLY VARIED ON ALL CLASSES, COVERED FULL RANGE OF THE 'THIN TO FLESHY SPECTRUM. SLAUGHTER COWS \$2.00 LOWER. SLAUGHTER BULLS \$1.00-\$2.00 LOWER. SLAUGHTER COW AND BULL DEMAND MODERATE. REPLACEMENT COW BUYERS ACTIVE, TAKING HALF OF COW NUMBERS. RECEIPTS THIS WEEK 8,750 HEAD; LAST WEEK'S HOLIDAY SHORTENED TRADING PERIOD 2,626; LAST YEAR 13,505. RUN INCLUDED 62% YEARLINGS; 32% CALVES AND STOCKERS UNDER 600

LB.; 6% COWS AND BULLS. BULK PRICE RANGES FOLLOW:
FEEDER STEERS: MEDIUM & LARGE FRAME 1, 300-350 LB. \$118.50-\$128.00; 350-425 LB. \$109.00-\$117.00; 425-500 LB. \$101.00-\$109.50; 500-550 LB. \$93.50-\$100.50; 550-600 LB. \$89.00-\$97.00; 600-700 LB. \$87.00-\$92.00, LOAD VERY THIN 605 LB. \$93.75; 700-800 LB. \$83.75-\$87.00, TO \$88.50 EARLY; 800-850 LB. \$82.00-\$86.25; 850-900 LB. \$81.00-\$84.25; 900-975 LB. \$75.00-\$81.00. LARGE FRAME 2 HOLSTEINS, 500-575 LB. \$76.50-\$82.00; 600-800 LB. \$71.00-\$74.50.
FEEDER HEIFERS: MEDIUM & LARGE FRAME 1, 300-400 LB. \$100.00-\$109.00; 400-450 LB. \$94.00-\$98.00; 450-500 LB. \$87.00-\$96.00; 500-600 LB. \$83.50-\$90.00; 600-700 LB. \$81.75-\$86.00; 700-775 LB. \$79.50-\$84.25.

SLAUGHTER COWS: CUTTER & BONING UTILITY Y.G. 1-2, AVERAGE DRESSING \$47.00-\$51.00; HIGH DRESSING \$50.00-\$52.00; LOW DRESSING \$45.00-\$48.00. BREAKING UTILITY Y.G. 3-4, AVERAGE DRESSING \$48.00-\$51.50; HIGH DRESSING \$44.50-\$46.00.
SLAUGHTER BULLS: Y.G. 1 1150-2150 LB. AVERAGE DRESSING \$62.00-\$64.50; HIGH DRESSING \$65.00-\$67.00, HIGH DRESSING/HIGH BONING LIMOUSIN \$70.00; LOW DRESSING \$57.25-\$58.50.

**Lebanon Valley
Livestock Auction**

Fredericksburg, Pa.

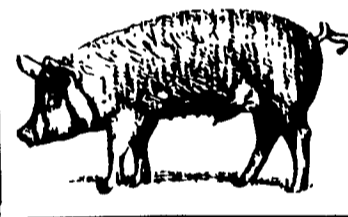
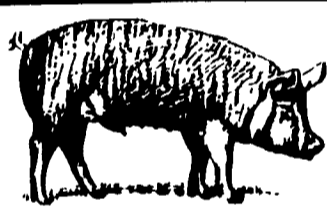
Tuesday, September 10, 1991

Report Supplied by PDA
REPORT FOR TUESDAY, SEPTEMBER 10, 1991 NOT REPORTED; HEAD-AGES ARE: CATTLE 139; CALVES 253; HOGS 98; FEEDER PIGS SNF GOATS 0; AND SHEEP 1.

THANK YOU

To

MARLIN HEISEY & FAMILY



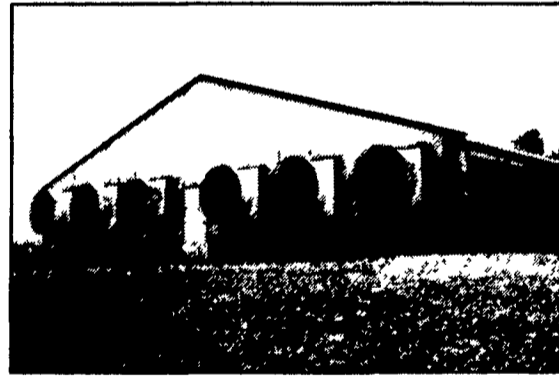
For Choosing TRI-COUNTY To Construct Your New Finishing Building



Turnkey Construction By TRI-COUNTY With Poured Concrete Deep Pit and Total Slatted Floors



Interior View



Aerotech Tunnel Ventilation Fans For Maximum Efficiency And Air Speed.

Featuring:



- Stainless Steel Feeders
- Wet Cast Gang Slats
- Solid Steel Penning



- Galvanized Feed Bins
- Flex Flow Auger System With Direct Drive And Heavy Duty Bin Boot

aerotech®

Tunnel Ventilation
Certified System Design
With Environmental Computer
Control For Heat,
Fans And Cooling

**TRI-COUNTY
CONFINEMENT SYSTEMS, INC.**

608 E. Evergreen Rd., Lebanon, PA 17042

Ph: 717-274-3488

Hours: Mon.-Fri.
7:00 to 4:30;
Sat. 8:00 to 12:00

