

Philadelphia Vegetables

Philadelphia, Pa.

Thursday, September 12, 1991

REPORTERS WILL BE ATTENDING NATIONAL MARKET NEWS CONFERENCE.

ARTICHOKES CA ctn 24s few 15.00. ASPARAGUS ABOUT STEADY CA 12-lb ctn bchd 12s lge & std 20.00 sml fair cond 12.00-15.00 CHILE 12-lb ctn bchd 12s lge 20.00-21.00 PERU 12-lb ctn bchd 12s exlge, lge & std 20.00-22.00 MEXICO 12-lb crt & ctn bchd 12s exlge & lge 24.00-25.00 std 20.00-24.00 sml 20.00-22.00.

BEANS SLIGHTLY HIGHER various bu containers Round Green type unless otherwise stated NJ 6.00- 8.00 fair qual low as 5.00 PA 6.00 VA 8.00-10.00 mos 8.00 few high as 12.00 fair qual low as 5.00 Wax type 10.00-12.00 CA Fava type 18.00.

BEANS-LIMA OFFERINGS INSUFFICIENT TO QUOTE. BEETS NJ crt bchd 12s 6.00 topped bubkt 8.00-9.00 OH ctn bchd 12s 6.00 topped 25-lb film bags 5.00.

BROCCOLI SLIGHTLY LOWER CA ctn bchd 14s 10.00 few 10.50-11.00 18s 10.00-10.50 lse crowns 12.50- 13.00 ME ctn bchd 14s 8.50 CANADA ctn bchd 18s 8.00-9.00.

BRUSSEL SPROUTS CA 25-lb ctn 16.00-19.00. CABBAGE ABOUT STEADY 1-3/4 buctn & crt med green unless otherwise stated NJ 7.00-8.00 mos 7- 7.50 few 6.50 one label 9.00-10.00 Savoy type 8.00 Red 9.00-10.00 mos 10.00 NY 7.50-8.00 50-lb sks lge 6.00-7.00 mos 6-6.50 PA 8.00 CANADA Savoy type 8.00 Red 10.00.

CARROTS ABOUT STEADY 48-1 lb film bags in film sacks CA med-lge 9.00 MI med one label 9.00 10- 5 lb film bags in film sacks CA med-lge 9.00 50-lb sacks loose jumbo CA 8.00-10.00 MI 7-7.50 CO 7.00 CANADA 6.00-7.00 miniature type CA ctn bchd 24s 11.00-11.50.

CAULIFLOWER SLIGHTLY LOWER CA ctn film wrpd 9s 7.00 12s 7.00-9.00 mos 8.00 few 10.00.

CELERY ABOUT STEADY CA ctn 1-1/2 doz few 11.00 2 doz 9.50-10.00 mos 10.00 occ hgr fair cond low as 8.00 2-1/2 doz 9.50-11.00 mos 10.00-11.00 occ 12.00 fair cond low as 8.00 3 doz few 11.00 MI ctn Hearts film wrpd 18s 10.00 CANADA ctn 2-2-1/2 doz 6.00-7.00.

CHINESE CABBAGE OH celery crt 10.00 Nappa 10.00 CANADA ctn approx 50- lb 6.00-8.00 Nappa 8.00.

CORN ABOUT STEADY wirebound crt approx 4-1/2 doz unless otherwise stated NJ White 7.00-8.00 mos 7.00 fair qual 5.00 Yellow 7.00-8.00 fair qual 5.00-6.00.

CUCUMBERS HIGHER 1-1/9 buctns &

ctns waxed medium unless otherwise stated NY 10.00 fair cond low as 8.00 fair qual 6.00-8.00 some 5.00 lge 4.00-7.00 few 8.00 VA 10.00-12.00 mos 11.00-12.00 fair qual 5.00-6.00 sml 7.00 NJ sml fair cond 4.00-5.00 Pickles bubkt unwaxed sml fair cond 8.00 lge 7.00 NC fair qual 4.00-5.00 PA flat ctn Long Seedless type film wrpd 12s 6.50-7.00.

DAIKON CA 40-lb ctn 12.00. EGGPLANT ABOUT STEADY NJ 1-1/9 buctn & ctn med incl wrpd 9.00-11.00 mos 10.00 few lwr fair qual 7.00-8.00 few 6.00 Italian type 5/9 buctn 5.00-6.00.

ENDIVE STEADY NJ 1-1/9 buctn few 5-5.50 NY 1-1/4 buctn few 5.50 OH 1-1/9 & 1-1/4 buctn 5.50-6.00.

ESCAROLE ABOUT STEADY NJ 1-1/9 buctn few 5-5.50 NY 1-1/4 buctn few 5.50 OH 1-1/9 & 1-1/4 buctn 5.50-6.00.

GARLIC per lb CA 30-lb ctn White new crop super colossal 1.03 colossal .90 super jumbo .80 extra jbo .75.

GREENS SLIGHTLY LOWER crt & ctn approximately 1-1/2 bu bchd unless otherwise stated NJ Collards & Kale 5.50-6.00 mos 5.50 PA Kale 6-6.50 OH Turnip Tops 8.00 Kale 6.50 CA 24s Red Kale 12.00-14.00 20-lb ctn Broccoli Rabe 19.00.

LEEKS ABOUT STEADY NJ crt bchd 12s few 12.00 CA ctn bchd 12s 10.00-11.00.

LETTUCE ICEBERG SLIGHTLY LOWER ctn 24s unless otherwise stated CA 11.00-13.00 some 10.00 film wrpd 24s 13.00-15.00 mos 13.00 fair qual low as 11.00 30s 10.00-12.00 CO 8.00-11.00 fair cond few 4.00-5.00 ROMAINE ABOUT STEADY CA 24s ctn 10.00-13.00 crt 14.00-15.00 OH ctn 24s 7.00-8.00 CANADA ctn 18s 7.00-8.00 BOSTON CA ctn 24s 7.50-8.50 mos 8.00 OH crt & ctn 24s 5.00-6.00 BIBB NJ 12-qt bkt 6.00 OH ctn 24s 5.00 sml crt 6.00 LEAF CA ctn 24s 9.00 few 9.50-10.00 few 8.00 fair cond 6.00 Red 9.00-10.00 mos 9.00 few 7.00-8.00 OH crt 24s incl Red 6.00 CANADA ctn 18s 6.00.

MUSHROOMS STEADY PA 4-qt bkt med-lge 4.50 few 5.00 sml-med 3.50 few 4.00 10-lb ctn med 8.25- 8.50 lge 10.75-11.00 mos 11.00 packages 10-12 oz 8.25-8.50 mos 8.50 few 9.00 3-lb ctn Shitake 13.50-14.00 fair qual 8.75-9.00 few 10.00.

MUSHROOMS STEADY PA 4-qt bkt med-lge 4.50 few 5.00 sml-med 3.50 few 4.00 10-lb ctn med 8.25- 8.50 lge 10.75-11.00 mos 11.00 packages 10-12 oz 8.25-8.50 mos 8.50 few 9.00 3-lb ctn Shitake 13.50-14.00 fair qual 8.75-9.00 few 10.00.

OKRA GA 5/9 buctn med 8.00. ONIONS-GREEN ABOUT STEADY ctn bchd 48s NJ 9.00 OH 9.00 CA 8.50-9.00 MEXICO 6.00-8.00.

PARSLEY ABOUT STEADY bchd 5 doz curly unless otherwise stated OH & CANADA crt 10.00 Plain 10.00-12.00 CA ctn 8.00-10.00 mos 10.00 occ 12.00.

PARSNIPS OFFERINGS INSUFFICIENT TO QUOTE.

PEAS-GREEN ABOUT STEADY CA buctn 18.00-19.00 GUATEMALA 10-lb

ctn per lb Sugar type .50-.80 few .90 Sugar Snap type few 1.80.

PEAS-SOUTHERN OFFERINGS INSUFFICIENT TO QUOTE.

PEPPERS SLIGHTLY LOWER 1-1/9 buctns & ctns Calif Wonder type Green unless otherwise stated NJ exlge 12.00 few hgr lge 10.00-12.00 mos 11.00 occ hgr fair appear 9.00 fair cond 7.00 med 8.00-10.00 mos 8.00-9.00 sml-med few 6.00-8.00 sml 5.00- 7.00 few 8.00 Mixed Red lge 6.00-8.00 med 4.00-5.00 4/5 buctn med 3.00 Red exlge fair cond 8.00-10.00 lge few 13.00 med-lge 8.00-10.00 sml-med 7.00 fair cond 3.00 Longhots 7.00-8.00 occ hgr PA exlge 12.00-13.00 mos 12.00 lge 12.00 med 10.00 MI lge 10.00 CANADA med 9.00-10.00 Mixed Red med 5.00.

RADISHES ABOUT STEADY OH ctn Red 30-6 oz film bags 3.00-3.50 few 3.75 14-1 lb film bags 3.50-4.00 bchd 24s 7.00 MI ctn Red 30-6 oz film bags 3.00 14-1 lb

film bags 3.25 MN ctn Red 30-6 oz film bags 3.50 14-1 lb film bags 3.75.

RHUBARB NO OFFERINGS.

RUTABAGAS CANADA 50-lb ctn CD#1 waxed med 7.00.

SPINACH ABOUT STEADY NJ 1-1/4 buctn Savoy type 10.00 CO Savoy type bubkt clipped 12.00 CA Flat type bchd 24s ctn 13.00 occ 16.00 REPAKED ENROUTE ctn 12-10 oz film bags Savoy type 9.00.

SQUASH SLIGHTLY LOWER NJ 1/2 buctns & ctns Zucchini sml-med 4.00-6.00 mos 4.00-5.00 med 3.00 Yellow Straight-neck sml-med 10.00-12.00 best mos 12.00 med 7.00 buctn Zucchini med-lge 6.00-7.00 1-1/9 buctn Acorn sml 6.00 Butternut 9.00 bubkt Acorn 8.00 Butternut 12.00 (CORRECTION FOR YESTERDAY'S REPORT: ACORN SHOULD HAVE READ 1-1/9 BUCRT SML 7.00 BUBKT 9.00, BUTTERNUT SHOULD HAVE READ 1-1/9 BUCRT SML 8.00

BUBKT 11.00-12.00) NC 1/2 buctn Zucchini sml-med 5.00-6.00 Yellow Straight-neck sml-med 14.00 GA 1/2 buctn Yellow Crookneck sml-med 7.00.

SWEET POTATOES ABOUT STEADY NC new crop 40-lb ctn Jewel type US#1 10.00-12.00 fair appear 9.00 fair qual & appear 4.00 lge 6.00 NJ new crop 1/2 buctn Yellow Jersey 10.00 fair qual 8.00 Red Jersey 13.00-14.00 1/2 bubkt Yellow Jersey 12.00.

TOMATOES ABOUT STEADY 25-lb ctn Pink to Light Red 85% or better US#1 qual unless otherwise stated NJ no grade marked fair cond lge 7.00 med 4.00 TN 6x6s 8-8.50 fair qual 5x6s 9-9.50 mos 9.00 6x6s 8.00 vineripe 5x6s 9.00-10.00 OH fair qual 5x6s 9.50 6x6s 8.50 VA 5x6s 10.00 few 10.50 some 9.50 1-lyr ctn organically grown exlge Red 6.50-7.00 CA 5x6s 9.00-10.00 mos 9-9.50 6x6s 9-9.50 2-lyr ctn 5x6s 5.00

JD EVERGREEN TRACTOR CO., INC. JD

TRACTORS:

Farmall Super C w/Plow, Cultivator, Loader, Mower And Belt Pulley, Nice..... Complete \$2,500

JD 4040 Power Shift, Sound Guard, 2300 Hrs., Sharp.....\$26,800

JD 4240 PS, Sound Guard.....\$24,900

Bobcat 743 Skid Steer Loader, Sharp.....\$10,900

JD 3020 Gas, Power Shift With Mtd. Ni Picker.....\$6,450

JD 3020 Diesel, Power Shift, Sharp.....\$8,950

JD 7020 Duals, Cab, Air, PTO, 3 Pt. Sharp...\$17,500

Bobcat 643 Diesel Skid Steer Loader.....\$8,750

COMBINES & PICKERS:

6620 Side Hill, turbo hydro, heater & air, monitor, spreader.

NI 818 combine, sharp

JD #343 3 Row 30" Corn Head.....\$3,650

JD 4400 Diesel Rotary Screen Combine, Auto Header Heights, Air, Monitor, 23.1x28, and VS Feeder House

JD 653 6 Row 30" Bean Head.....\$4,450

JD 13' Quick Tach Rigid Grain Head.....\$1,850

JD 4425 Combine, Nice

JD 444 4 Row Wide Corn Head.....\$3,650

JD 213 Rigid Head For Side Hill.....\$2,850

NI 2 Row Wide w/Sheller.....\$1,850

HAY & FORAGE EQUIPMENT:

JD 1 Row, Row Crop Attachment, Nice..... \$550

JD 5 1/2' Pickup Attachment

NH 1010 Bale Wagon.....\$4,350

NH 268 Baler w/Ejector

NH #499 12' Hydraulic Haybine.....\$7,350

JD #30 Hydraulic Bale Ejector.....\$1,500

JD 50 Side Mtd. Mower For 3020, Etc..... \$450

Hesston 1091 Mower Conditioner.....\$2,950

NI 7' Pull Type Grass Mower.....\$350

Case Hay Conditioner.....\$200

JD 672 Hydraulic Drive Rake, Like New.....\$3,250

JD 24T B **SOLD**.....\$950

NH 460 Hayb **SOLD**.....\$1,250

DISCS AND FIELD CULTIVATORS

JD 12' TWA Plowing Disc.....\$2,550

Brady 18' Folding Field Cultivator.....\$2,150

JD 210 14' Black Gang Disc.....\$3,850

IH 475 20' Hydraulic Wing Disc.....\$4,350

JD 230 27' Wing Fold Disc w/New Blades.....\$7,850

JD BWF 12' Disc.....\$1,850

JD 12' Plowing Disc, Sharp.....\$3,450

Pittsburgh 10' Wheel Carrier **SOLD**.....\$750

CULTIPACKERS

Brillion 10' w/Big Shaft.....\$950

Brillion 3' Section 28' Packer.....\$2,450

Brillion 12' Packer, Big Shaft.....\$1,150

JD 10' Packer.....\$1,050

(1) (2) Each Brillion 12' Packers w/Transport.....each \$1,250

Brillion 12' w/Big Shaft.....\$1,250

Brillion 12' Packer w/Transport.....\$1,850

Brillion 16' Packer w/Transport.....\$1,850

16' Dunham Transport Pac **SOLD**.....\$1,450

ROW CROP CULTIVATORS & ROTARY HOES

JD 4 Row Front Mount Cultivator For 3020.....\$1,550

JD RM 4 Row 30" Cultivator.....\$1,050

Coming In...

JD 1209 Mower Conditioner

JD 1207 Mower Conditioner

JD 148 Loader, Sharp

6 Row 1000 PTO Stalk Shredder

JD 327 Baler w/40 Ejector, Sharp

NI 213 Manure Spreader

NI 243 Manure Spreader

JD 443 Corn Head, Low-Tin, Sharp

JD 443 Corn Head

Store Hours
PARTS- Mon. Thru Fri. 7:30 A.M. To 4:30 P.M.
Sat. 8:00 A.M. To Noon
SERVICE- Mon. Thru Fri. 8:00 A.M. To 4:30 P.M.

PLOWS-MOLDBOARD AND CHISEL:

JD 7B 2500 Plow.....\$3,950

JD 1450 6-16" Semi-Mtd. Plow.....\$2,250

JD 4-16" F325 Auto Reset Plow.....\$1,250

JD 2500 7x18" On-Land Plow.....\$5,400

JD 1B Roll-Over Plow.....\$1,250

IH 9 Tooth Pull Type Chisel.....\$1,850

JD 2700 6B Auto Reset On-Land Plow.....\$7,450

JD 10 Tooth Pull Type Chisel.....\$1,850

JD 3200 6x18" Pull Type Auto Reset Plow.....\$3,950

JD 2500 5x18" Auto Reset Plow.....\$3,950

(New) JD 12' Chisel w/Walking Tandem.....\$3,450

White 588 5-20" On Land Plow.....\$4,850

JD 10' Pull Type Chisel.....\$2,450

Brillion 3 pt. Deep Till.....\$3,500

JD 1710A Mulch Tiller, 13 Shank, Sharp.....\$4,500

JD 2700 5B Variable Width Plow.....\$5,450

IH 13 Shank Pull Type Chisel.....\$1,450

ROLLER HARROWS AND CULTIMULCHERS

IH #315 12' Roller Harrow.....\$2,850

Brillion 18' Cultimulcher.....\$3,250

Brillion 15' Roller Harrow.....\$3,850

Kewanee 20' Flat Fold Roller Harrow.....\$5,950

JD F950 12' Roller Harrow.....\$3,450

PLANTERS & GRAIN DRILLS:

JD 7000 Conservation 6 Row Liquid.....\$9,500

JD Model B 14x7 Double Disc Drill.....\$1,450

JD #300 18x7 DD Grain Drill.....\$3,450

JD 7000 6 Row Liquid Fert. Attach.....\$1,500

JD 4 Row Conservation Planter, Late Model, Sharp.....\$8,350

(1) (2) Ea. Complete JD 7000 Planter Units w/No-Till Coulters.....\$450

MISCELLANEOUS:

NH 352 Grinder-Mixer.....\$2,450

JD 37 Loader, All Hydraulics For Utility.....\$1,850

Donahue Implement Trailer.....\$1,850

JD 45 Loader for 2 Cylinder Tractor.....\$750

Transcraft 42' Drop Deck Trailer, Air Ride, Nice.....\$8,500

200 Bu. Gravity Wag **SOLD**.....\$1,250

Bobcat #07 Backhoe.....\$4,750

Fruehauf 20' Steel Dump Trailer, Single Axle, For Grain.....\$1,850

JD 48 Loader for Row Crop Tractor.....\$2,150

JD 10' HD Front Dozer Blade.....\$2,150

JD On-Land Hitch For 7B 2500 Plow.....\$1,200

JD Tandem Drill Hitch.....\$475

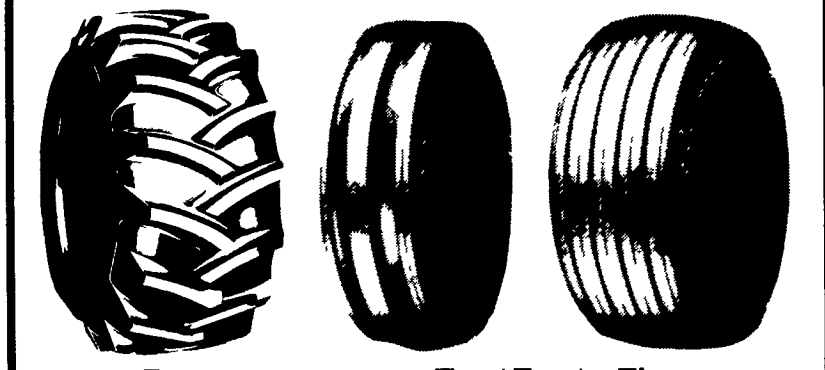
Martin Scavenger Spreader #1678.....\$4,750

ANNOUNCING THE AVAILABILITY OF USED PARTS FOR THE FOLLOWING MACHINES:

- 7000 Planters
- 2500 Plows
- F350 Hydraulic Reset Plows
- Cultivator Parts
- Grain Drills
- Trip Plows
- Disc Harrows
- Roller Harrows (John Deere and Brillion)
- 35 and 3800 Harvesters
- Grain Platform
- Combine Corn Head

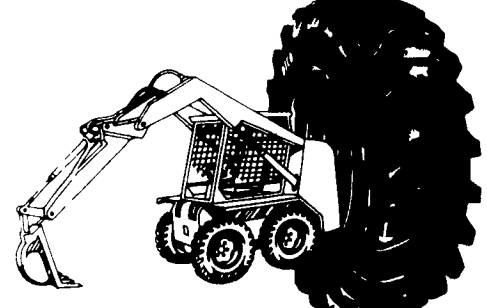
This is a partial listing. Please call for availability even if your machine is not listed.

COMPLETE FARM TIRE LINE



Rear Tractor Tires

Front Tractor Tires

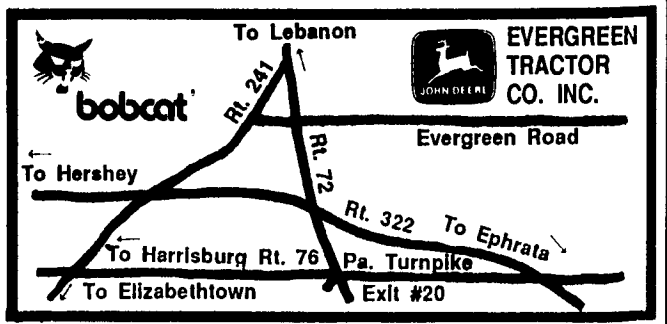


Skid Loader Tires

All Sizes And Types Of Tires Available At Discount Prices

- Fast On-The-Farm Service
- Radio Dispatched Service

LEOLA TIRE SERVICE, INC.
717-656-2574 258 W. MAIN ST., LEOLA, PA



30 Evergreen Rd., Lebanon, PA., (717) 272-4641 or Toll Free 1-800-441-4450