

National Grain Market

St. Joseph, Mo.
 Wednesday, August 28, 1991
 USDA DAILY NATIONAL GRAIN MARKET SUMMARY GRAIN AND SOYBEAN PRICES CLOSED MIXED WEDNESDAY IN ACTIVE LATE TRADING. WHEAT MIXED. CORN 1 TO 4 CENTS LOWER. SORGHUM STEADY TO 5 CENTS HIGHER. SOYBEANS 2 TO 5 CENTS LOWER. WHEAT AND CORN PRICES MOVED IN BOTH DIRECTIONS. WHEAT PRICES RECEIVED SUPPORT FROM FUND BUYING ON THE BOARD AND IDEAS U.S.S.R. NEEDS MORE WHEAT. PROFIT TAKING LOWERED CORN PRICES BUT CONTINUED EXPECTATIONS OF U.S. CREDIT TO U.S.S.R. AND RECENT SALES TO JAPAN, UNDERPINNED CORN PRICE WEAKNESS. CORN HARVEST MOVING UP INTO NORTHERN MISSOURI WITH CONTINUED EXTREMELY HOT, DRY WEATHER. HARVEST WILL BE IN FULL SWING IN IOWA IN TWO OR THREE WEEKS. OTHER THAN IRRIGATED CORN, REPORTS INDICATE YIELDS RANGING FROM POOR TO FAIRLY GOOD. SOYBEAN PRICES RALLIED TO ALMOST \$6.00 FOR NOVEMBER CONTRACTS BEFORE LATE DAY PROFIT TAKING SET IN TO ERASE ALL EARLIER GAINS. CONTINUED HOT, DRY WEATHER BUT RAIN IN THE FORECAST ADDED PRESSURE TO BEAN PRICES. MANY PLACES BEANS IN THE PODDING STAGE AND NEED MOISTURE.

EXPORT NEWS: U.S.D.A. TARGETED 3 COUNTRIES; ISRAEL, JORDAN AND ALGERIA FOR COMBINED SALE OF 1.0 MILLION TONNES SUBSIDIZED BARLEY UNDER EXPORT BONUS. JAPAN BOUGHT 211,300 METRIC TONS CORN FOR 91/92 MARKETING YEAR.

DATE CHANGE YEAR AGO 08/28/91 08/27/91 08/29/90 WHEAT: KANSAS CITY 3.14-3.17 DN 2-NC 2.80-2.85 MINNEAPOLIS 3.14 1/4-3.24 DN 3-UP 3 2.97 1/2-2.99 1/2 PORTLAND 3.58-3.63 NC-UP 4 3.21-3.23 ST. LOUIS 2.79-2.83 UP 1 2.85-2.89.

CORN, U.S. NO. 2 YELLOW: KANSAS CITY 2.53-2.55 UP 1-DN 1 2.53-2.58

MINNEAPOLIS 2.39 DN 3 3/4 2.53 SO. IOWA 2.47-2.52 1/2 DN 6-1 1/2 2.56-2.62 OMAHA 2.36-2.39 DN 1 2.40-2.43. SOYBEANS, NO. 1 YELLOW: KANSAS CITY 5.83-5.85 DN 1-2 6.06-6.11 MINNEAPOLIS 5.67 DN 4 3/4 6.07 1/2 SO. IOWA 5.71-5.77 DN 8-5 6.11-6.15 C. ILL. PROCESSORS 5.81-5.88 DN 4 6.18 1/2-6.27 1/2.

*KANSAS CITY, US NO. 1 HARD RED WINTER WHEAT, ORDINARY PROTEIN. MINNEAPOLIS, US NO. 1 DARK NORTHERN SPRING WHEAT, 14% PROTEIN. PORTLAND, NO. 1 SOFT WHITE WHEAT, ST. LOUIS, NO. 2 SOFT RED WINTER WHEAT.

FUTURES CLOSE: KANSAS CITY (SEP) WHEAT 3.10 UP 10 2.72 (DEC) WHEAT 3.16 UP 6 MINNEAPOLIS (SEP) WHEAT 2.90 1/4 UP 1 2.75 1/2 CHICAGO (SEP) WHEAT 3.05 1/4 UP 2 1/2 2.75 3/4 (SEP) CORN 2.50 DN 1 3/4 2.50 (DEC) CORN 2.54 1/2 DN 1 (NOV) SOYBEANS 5.83 DN 3 3/4 6.

19 1/2 - EXPORT: BARGE OR RAIL, PORT OF NEW ORLEANS OR NORTH TEXAS GULF. NO. 1 HARD RED WINTER WHEAT ORDINARY PROTEIN 3.52-3.54 NC-UP 2 3.14-3.15 NO. 2 SOFT RED WINTER WHEAT 3.55-3.57 UP 2-3 3.14-3.15 NO. 2 YELLOW CORN 2.78-2.82 DN 4-1 2.83-2.85 NO. 2 YELLOW SORGHUM RAIL 4.94 NC BARGE 4.94 DN 2 4.60-4.71 NO. 2 YELLOW SOYBEANS 6.12-6.13 DN 1 6.34-6.35.

Regional Hay

August 26, 1991 Eastern, Pa.

HAY & STRAW MARKET FOR EASTERN PA - (ALL HAY NO. 2 AND BETTER, PRICES PAID BY DEALERS AT THE FARM & PER TON). HAY & STRAW STEADY TO WEAK.

ALFALFA 80.00-115.00; MIXED HAY 65.00-90.00, FEW 105.00; TIMOTHY HAY 60.00-85.00, FEW 110.00; STRAW 40.00-75.00; MULCH 25.00-35.00.

SUMMARY OF LANCASTER CO. HAY AUCTIONS FOR WEEK ENDING 8/23/91. PRICES PER TON: LOADS: 156 HAY, 35 STRAW, AND 62 EAR CORN. ALFALFA 97.00-150.00; MIXED HAY 80.00-145.00; TIMOTHY HAY 100.00-155.00; STRAW 70.00-100.00, EAR CORN 85.00-95.00.

SUMMARY OF CENTRAL PA.

HAY AUCTIONS FOR WEEK ENDING 8/23/91. PRICES PER TON: LOADS: 106 HAY, 10 STRAW & 18 EAR CORN.

ALFALFA 100.00-157.00; MIXED HAY 70.00-105.00; TIMOTHY HAY 70.00-137.50; STRAW 65.00-102.50; EAR CORN 83.00-106.00.

Hoover's Hay Auction

Gratz, Pa.

Friday, Aug. 23, 1991

Report Supplied by Auction

TOTAL LOADS: 4.

ALFALFA: 165.00.

BALAGE: 70.00.

GRASS HAY: 63.00.

EAR CORN: 74.00.

This sale is held every second and fourth Friday at Hoover's Hay Auction, 1 mile east of Gratz, Pa.

Kirkwood Hay Auction

Kirkwood, Pa.

Tuesday, August 27, 1991

Report Supplied by Auction

27 LOADS OF HAY.

MIXED HAY: 1ST CUTTING 83.00.

TIMOTHY: 120.00-157.00.

ALFALFA: 2ND CUTTING 119, 3RD CUTTING 80.00-135.00.

CLOVER: 2ND CUTTING 112.00.

GRASS: 94.00-95.00.

WHEAT STRAW: 70.00-86.00.

RYE STRAW: 68.00.

MIXED STRAW: 69.00.

EAR CORN: 86.00-92.00.

North Jersey Market

Hackettstown, N.J.

Tuesday, August 27, 1991

Hay-Straw & Grain Report

MIXED HAY: 6 LOADS, 1.00-2.00

BALE.

GRASS HAY: 6 LOADS, 1.00-2.10

BALE.

WHEAT STRAW: 1.20 BALE.

OAT STRAW: 1.00 BALE.

OATS: 7.00 AND 7.50 BAG.

TOTAL: 16 LOADS.

Keister's Hay

Middleburg, PA

Tuesday, August 27

Report supplied by auction

61 LOADS.

ALFALFA: DUSTY 110.00-130.00.

MIXED HAY: 75.00-110.00.

TIMOTHY: VERY BAD 75.00.

MULCH: 50.00.

STRAW: 75.00-102.50.

EAR CORN: 85.00-100.00.

RYE: 4.00-5.25 BU.

OATS: 1.60-1.90 BU.

BARLEY: 1.95 BU.

Greencastle Hay Market

Hay & Straw

August 22-26, 1991

13 LOADS.

ALFALFA MIXED

100.00-140.00/TON.

MIXED HAY 54.00-105.00/TON.

BROOM GRASS 85.00-110.00/TON.

Dewart Hay

Dewart, PA.

Monday, August 26, 1991

Report Supplied by Auction

12 LOADS OF HAY, 73.00-150.00.

STRAW: 5 LOADS, 53.00-97.00.

CORN: 2 LOADS, 96.00 AND 100.00.

OATS: 1.92 1/2 BU.

New York Egg Market

Thursday, August 29, 1991

Prices were unchanged. Trade sentiment was generally steady on large, and fully steady for mediums. Demand was moderate to good, best for cartoned eggs into retail specials. Large eggs were featured at 89 cents, and 2 dozen for \$1.00 with a coupon and \$5.00 minimum purchase. Supplies of all sizes were usually adequate.

PRICES TO RETAILERS, SALES TO VOLUME BUYERS, USDA GRADE A AND GRADE A, WHITE EGGS IN CARTONS, DELIVERED STORE DOOR, CENTS PER DOZEN RANGE EXTRA LARGE .77-.79; LARGE .74-.77, MEDIUM .63-.66.

Belknap Livestock Auction

Dayton, Pa.

Wednesday, August 28, 1991

Report Supplied by PDA

SALE NOT REPORTED WEDNESDAY, AUGUST 28, 1991!

PARADISE CONCRETE
METERED DELIVERY!
 You can't over or under order! Guaranteed Savings! Variable Pricing!

DEFINITELY CALL US BEFORE YOU BUY!

Delivery When You Need It! Large And Small Trucks

717-687-0990

Dedicated To The Farm Community

Mitch White
Eric R. Probat

STRATFORD
 State of the art Coal Stoves at

DUSSINGER'S QUALITY STOVES

2533 OLD PHILA. PIKE, Rt. 340, Smoketown PA 3 Miles East of Lancaster Tues., Thurs. & Fri. 10-4; Wed. & Sat. 10-5 (717) 397-7539

SEE OUR NEW EFFICIENT EPA WOOD STOVES

SPECIAL SALES
 100 HEAD (SELECTED)
 7 P.M. Cow Sale
 Friday Nite Sept. 6

SPECIAL HEIFER SALE
 600 HEIFERS
 Reg. And Grades
 SAT. SEPT. 28 10:00 A.M.

NEW HOLLAND SALES STABLES INC.
THE ACTION AUCTION

LIVESTOCK IS OUR ONLY BUSINESS

HORSE SALE
 Fri., Sept. 13 - 7:00 P.M.
 Tack 6 P.M.
 Horses Hitched 12 Noon

MONDAY

SLAUGHTER HOGS



EARLY BIRD HOG SALE
8:00 A.M.

Sell Your Hogs At New Holland Sales Stables, Inc. See them weighed, sold and pickup your check.

10:00 AM



HORSES
MULES

1:30 PM

BEEF SALE



SHEEP
GOATS

CALVES

WEDNESDAY

HEIFER SALE
11:00 AM

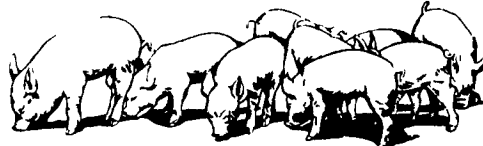
COW SALE 12:00 NOON



We have the usual run of 50 to 100 Heifers, all ages. Loads of fresh cows and springers from our regular shippers. Also some local fresh cows and springers.

1:30 P.M.

FEEDER PIG SALE



Pigs are accepted after 6:30 A.M. State graded from 8 to 12 Dairy Barn and Feeder Pig Barn are cleaned and disinfected weekly for your protection.

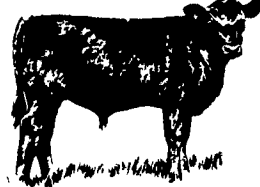
THURSDAY

Beef Auction
10:00 A.M.

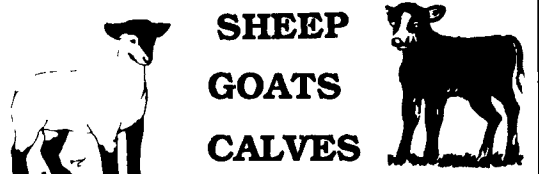
BULLS
STEERS
BEEF COWS



1:00 P.M.
STOCKERS
 &
FEEDERS



12:00 NOON



SHEEP
GOATS
CALVES

NEW HOLLAND SALES STABLES, INC.
 12 Miles East of Lancaster Off Route 23, New Holland, Penna.

MANAGERS

Norman & David Kolb - 717-397-5538

Field Representatives

Luke Eberly - 215-267-6608 738-1865
 Homer Eberly - 215-267-3047
 Ron Ranck - 717-656-9849

Sale Barn Office Manager
 Roger Floyd - 717-354-4341
 FAX # 717-355-0706

Order Buyer
 Paul Good - 215-445-6662