

# Lancaster Co. Livestock Market Auctions

## Lancaster Livestock

Monday, Aug. 26, 1991  
Cattle Calves Hogs Sheep Goats  
Monday's Auction  
1215 70 241 1237 427  
Last Monday's Auction  
1097 79 96 935 376  
Last Year's Auction  
1120 80 304 1024 335

CATTLE: Slaughter steers 75-1.00 lower; slaughter heifers 1.00-1.50 lower; cows steady; bullocks fully steady; bulls firm to 1.00 higher. Supply included 58% slaughter steers, 17% slaughter heifers, 17% cows, and 8% bulls.

SLAUGHTER STEERS: Choice 2-4 1030-1500 lb 67.85-70.00, few 70.00-70.50; small supply High Choice and Prime 2-4 1275-1380 lb 69.60-71.10, few 70.25-71.50; few Choice 2 1150-1350 lb 71.75-72.75; Select and Choice 3-4 1450-1685 lb 62.00-63.25; Select and low Choice 2-3 1050-1350 lb 66.25-69.00.

HOLSTEINS: Load Choice and Prime 1635-1790 lb 62.10-63.35; Choice 1180-1600 lb 60.60-63.35; Select 930-1600 lb 58.00-61.50.

SLAUGHTER HEIFERS: Choice 2-3 1000-1230 lb 64.50-67.75, couple Choice 2 1075-1175 lb 68.25-69.25; Choice 2-3 860-970 lb 60.00-63.25; Select 2-3 975-1200 lb 62.00-65.25, few 850-950 lb 56.25-60.00.

COWS: LOW DRESSING BULK HIGH DRESSING Breaking Utility & Commercial 2-3 52.00-54.00 54.00-55.50 Commercial 3-4 48.50-51.00 Cutter & Boning Utility 1-2 50.50-52.50 52.50-54.00 Canner & low Cutter 45.00-47.50 47.50-50.50

BULLOCKS: Choice 2-3 1075-1400 lb 65.75-66.25, couple 68.00-70.50; Select 1-3 1050-1300 lb 63.00-65.00.

BULLS: Yield grade 1 1275-2100 lb 66.50-68.75, 15 head 69.75-73.25, couple 1680-1845 lb 76.00-78.00, with an individual 2055 lb 82.25; Yield grade 2 1050-1500 lb 61.50-66.00.

CALVES: Vealers steady; slaughter calves steady, instances 5.00 higher. Demand good for Holstein bulls to return to farm.

VEALERS: Choice 180-280 lb 100.00-110.00; high Good and low Choice 180-300 lb 75.00-95.00.

SLAUGHTER CALVES: Good and Choice 275-450 lb 70.00-85.00.

RETURNED TO FARM: Bulk 90-125 lb Holstein bulls 150.00-175.00.

HOGS: Barrows and gilts mostly steady; sows unevenly steady.

BARROWS AND GILTS: US 1 Few 215-240 lb 53.00-53.50 US 1-3 210-250 lb 50.50-51.50.

SOWS: US 1-3 300-500 lb 35.00-39.00 500-650 lb 38.00-41.00. Medium 1-2 300-450 lb 32.00-35.00.

BOARS: All Weights 33.00-35.50.

SHEEP: Spring lambs 2.00-3.00 lower; slaughter ewes steady.

SPRING LAMBS: Choice 80-110 lb 48.00-58.00, few 60-80 lb 57.00-60.00, 110-135 lb 45.00-49.00; Good to low Choice 80-110 lb 43.00-48.00, few 60-80 lb 46.00-50.00.

## Vintage Livestock Auction

Paradise, Pa.  
Tuesday, August 27, 1991  
Report Supplied by USDA

CATTLE 705...USDA...Compared with Monday's market: Slaughter steers .50 to 1.00 lower, instances 1.50 late; Heifers scarce; Cows steady, instances 1.00 lower; Bulls steady. Choice 2-4, 1100/1400 lbs. slaughter steers 66.75-69.50, few 69.50-69.75, few High Choice & Prime 2-4, 1100/1375 lbs. 68.25-70.50, couple lots 3-4, 1315/1560 lbs. 64.85-66, Choice #2, 1100/1350 lbs. 69.50-71.75, few 71.85-72.75, 3-4, 1150/1400 lbs. 65-67.50, 1400/1600 lbs. 64.00-67, Select & low Choice 2-3, 1075/1350 lbs. 63.00-67.50; Choice Holsteins 1250/1565 lbs. 60.25-61.10. Couple Choice 2-3 970/1065 lbs. sl. heifers 63.00-64.85, Select & Choice 2-3 1020/1250 lbs. 57.00-58.00. Breaking Utility & Commercial cows 2-3, 51.25-54, high dressing 54.00-55.25, Commercial 3-4 48-57.25, Cutter & Boning Utility 1-2, 50.25-53, high dressing 53.00-55.50, low dressing 49.00-50, Canner & Low Cutter, 47.00-49.50, low dressing 44.00-47.00. Yield Grade No. 1, 1350/1950 lbs. sl. bulls 65.25-67.25, No. 2, 1050/1500 lbs. 60.50-64.25.

CALVES 914... Supply included 601 in graded sale of which 95% sold to return to farm...Vealers over 150 lbs. scarce, High Good and low Choice 3.00 to 5.00 higher. Couple Choice 195/265 lbs. 90.00&96.00, couple High Good and low Choice 220/265 lbs. 76.00-85.00, 70/110 lbs. 74.00-88.00, few Standard and low Good 55/80 lbs. 60.00-70.00 Farm Calves: No. 1, Holstein Bulls 120/125 lbs. 166.00, 110/115 lbs. 180.00, 90/125 lbs. 182.00-189.00, 85/95 lbs. 161.00-174, 70/80 lbs. 130.00-141.00, Small frame 80/115 lbs. 139.00-155.00; Hol. Heifers 100/115 lbs. 195.00-206.00, Small frame 75/105 lbs. 135.00-150.00.

SHEEP 1...SPRING SLAUGHTER LAMBS...Insufficient volume to fully test a trend.

GOATS 2...Insufficient volume for a market test - all per head.



SLAUGHTER EWES: Utility and Good 15.00-25.00; Yearlings and two-year olds 25.00-40.00.

GOATS: All goats sold by the head. Large 50.00-75.00; few Billies 75.00-100.00, couple 100.00-110.00. Medium 35.00-40.00; few thin 30.00-35.00. Small, mainly kids, 30.00-40.00; few thin 20.00-30.00.

## Lancaster Livestock Auction

Lancaster, Pa.  
Wednesday, August 28, 1991  
Cattle Calves Hogs Sheep Goats

Wednesday's Auction  
16 0 340 0 0  
Last Wednesday's Auction  
7 3 74 0 0  
Last Year's Auction  
27 12 340 0 0

CATTLE: Insufficient volume for a market test.

VEAL CALVES: No market test.

HOGS: Barrows and gilts 1.00-1.50 lower; sows steady.

BARROWS AND GILTS: US 1-2 215-235 lb 50.00-51.00. US 1 Few 215-235 lb 52.00-53.50. US 1-3 220-255 lb 48.50-50.00.

SOWS: US 1-3 350-550 lb 38.25-41.25.

SHEEP: No market test.

GOATS: No market test.

## Greencastle Livestock

Greencastle, Pa.  
Thursday, August 29, 1991  
Report Supplied by PDA

CATTLE: 220. COMPARED WITH LAST THURSDAY'S MARKET, SL. COWS STEADY .75 LOWER; FEW HOLSTEINS STANDARD 52.00-55.00. BREAKING UT. & COMMERCIAL SL. COWS 50.00-54.75, CUTTER/BON. UT. 48.75-53.75, COUPLE 55.00, CANNER/LOW CUTTER 44.50-48.50, SHELLS DOWN TO 42.00. COUPLE YIELD GRADE NO. 1, 1725, 1550 LBS. SL. BULLS 60.00-62.50.

CALVES 595. FEW CHOICE 87.00-101.00, STAND. & GOOD 75-100 LBS. 75.00-90.00, UT. 55-75 LBS. 65.00-76.00. NO. 1, HOLSTEIN BULLS 85-125 LBS. 135.00-180.00, FEW 189.00, NO. 2 75-120 LBS. 90.00-140.00. NO. 1, HOL. HEIFERS 80-115 LBS. 95.00-150.00, FEW 167.50, #2 70-100 LBS. 72.00-90.00. BEEF CROSS 75-115 LBS. BULLS & HEIFERS 135.00-188.00.

HOGS 3. COUPLE US NO. 1-3 400 LBS. 40.00-41.00. BOARS ONE 33.50. FEEDER PIGS 16.

SHEEP 16. FEW GOOD/CH. 65-95 LBS. 42.00-42.50 SLAUGHTER SHEEP FEW 12.00-15.00.

GOATS 19. LARGE 39.00-69.00, FEW SMALL & MEDIUM 11-30/HR.

## Lancaster Hogs

Lancaster Stockyards  
Sat., Aug. 24, 1991  
Report supplied by auction

414 HEAD.  
US 1 215-245 LBS. 53.00-53.75.  
US 1-2 215-245 LBS. 52.00-53.00.  
US 1-3 215-245 LBS. 50.00-52.00.  
US 2-4 215-255 LBS. 48.75-50.00.  
GOOD SOWS: 38.50-40.50.  
MEDIUM SOWS: 36.00-38.50.  
THIN SOWS: 30.00-35.00.  
BOARS (ALL WEIGHTS): 32.00-35.00.

## New Holland Livestock

August 29, 1991  
Cattle Calves Sheep Goats  
Today 715 746 247 127  
Last Thursday 1431 721 186 142  
Last Year 746 647 183 76

CATTLE: Slaughter steers steady, instances 50 lower; slaughter heifers not fully tested; cows steady, although some early sales weak to 1.00 lower; bullocks and bulls steady. Supply included 45% slaughter steers and 41% cows.

SLAUGHTER STEERS: Choice 2-4 1100-1500 lb 66.00-68.50, few 68.50-69.10; few High Choice and Prime 2-4 1200-1400 lb 68.25-69.75; Select and Choice 2 1100-1325 lb 69.50-71.75; few Choice 4 1200-1450 lb 63.75-65.00; Select and low Choice 2-3 1075-1425 lb 62.50-67.00, few 67.00-68.25.

HOLSTEINS: Choice 1190-1500 lb 60.60-62.50; couple lots Select and Choice 1170-1240 lb returned to feed at 60.75-61.25.

COWS: LO DRESSING BULK HI DRESSING Breaking Utility & Commercial 2-3 52.00-54.00. Commercial 3-4 49.00-52.00. Cutter & Boning Utility 1-2 48.75-50.50 50.50-54.00 54.00-55.25. Canner and low Cutter 44.00-46.50 46.50-49.75.

BULLOCKS: Couple Choice 2-3 1175-1350 lb 66.25-68.00; few Select 1-3 1050-1300 lb 60.00-64.00.

BULLS: Yield grade 1 1400-1800 lb 64.25-67.00; Yield grade 2 1050-1550 lb 61.75-64.00, few low dressing 56.75-60.00.

CALVES: Vealers steady, instances 5.00 higher on Good to low Choice 70-110 lb, although Choice and scarce. Demand good for Holstein bulls and heifers to return to farm.

VEALERS: Choice 170-310 lb 90.00-96.00; high Good and low Choice 250-370 lb 81.00-86.00, 80-110 lb 80.00-90.00; Standard and low Good 60-85 lb 70.00-80.00.

RETURNED TO FARM: Bulk 95-125 lb Holstein Bulls 152.00-185.00, few 187.00-197.00; small frame 90-110 lb 120.00-150.00, few 80-90 lb 95.00-120.00; bulk 90-120 lb Holstein Heifers 150.00-175.00, few 175.00-191.00; small frame 90-110 lb 110.00-150.00, few 80-90 lb 90.00-110.00.

SHEEP: Spring lambs and slaughter ewes steady.

SPRING LAMBS: Choice 70-105 lb 42.00-49.00, few 35-55 lb 58.00-77.00; Good to low Choice 65-90 lb 40.00-45.00, 40-60 lb 46.00-50.00.

SLAUGHTER EWES: Utility and Good 13.00-24.00; Yearlings and two-year olds 28.00-42.00.

GOATS: All goats sold by the head. Large 68.00-90.00, few 92.00-102.00; Medium 43.00-68.00; Small 21.00-39.00.

## Lancaster County Weekly

August 30, 1991  
CATTLE CALVES  
THIS WEEK 2800 1725  
LAST WEEK 3833 1654  
LAST YEAR 2529 1669

CATTLE: Slaughter steers closed 2.00-2.50 lower; slaughter heifers 1.00-1.50 lower; cows mostly steady, bullocks fully steady; bulls firm to 1.00 higher. Supply included 47% slaughter steers, 10% slaughter heifers, 31% cows, 5% bulls, with the balance feeders.

SLAUGHTER STEERS: Choice 2-4 1100-1500 lb 66.00-68.50, few early part of week 68.50-70.00; small supply High Choice and Prime 2-4 1200-1400 lb 68.25-70.50; Choice 2 1100-1350 lb 69.50-71.75, few early 71.75-72.75; Choice 3-4 1150-1400 lb 64.00-67.50, 1400-1600 lb 63.75-66.50; Select and low Choice 2-3 1075-1450 lb 62.50-67.50.

HOLSTEINS: Load Choice and Prime 1635-1790 lb 62.10-63.35; Choice 1190-1600 lb 60.25-63.35; Select 930-1600 lb 58.00-61.50, couple lots 1170-1240 lb returned to feed at 60.75-61.25.

SLAUGHTER HEIFERS: Choice 2-3 1000-1230 lb 64.50-67.75; couple Choice 2 1075-1175 lb 68.25-69.25; Choice 2-3 860-970 lb 60.00-63.25; Select 2-3 975-1200 lb 62.00-65.25, few 850-950 lb 56.25-60.00.

COWS: LOW DRESSING BULK HIGH DRESSING Breaking Utility & Commercial 2-3 51.50-54.00 54.00-55.50 Commercial 3-4 48.00-52.00 Cutter and Boning Utility 1-2 48.75-50.50 50.50-53.50 53.50-55.50 Canner and low Cutter 44.00-47.00 47.00-49.75

BULLOCKS: Choice 2-3 1075-1400 lb 65.75-68.00, couple 68.00-70.50; Select 1-3 1050-1300 lb 60.00-65.00.

BULLS: Yield grade 1 1275-2100 lb 65.00-68.75, 15 head 69.75-73.25, Yield grade 2 1050-1550 lb 61.50-66.00.

CALVES: Small supply Choice vealers steady, high Good and low Choice 80-110 lb 10.00-15.00 higher; slaughter calves steady, instances 5.00 higher. Demand good for Holstein bulls and heifers to return to farm.

VEALERS: Choice 170-310 lb 90.00-96.00, couple 100.00-110.00, high Good and low Choice 220-370 lb 76.00-86.00, 70-110 lb 74.00-90.00, Standard and low Good 55-80 lb 60.00-75.00

SLAUGHTER CALVES: Good and Choice 275-450 lb 70.00-85.00.

RETURNED TO FARM: Bulk 90-125 lb Holstein bulls 152.00-189.00, few 190.00-197.00, 70-85 lb 130.00-160.00, small frame 80-115 lb 120.00-155.00, few 80-90 lb 95.00-120.00. Bulk 90-120 lb Holstein heifers 150.00-206.00; small frame 75-110 lb 110.00-150.00, few 75-90 lb 90.00-110.00.

**LEBANON VALLEY LIVESTOCK MARKET, INC.**  
1 mile East of Fredericksburg along Rt. 22  
**PHONE JONESTOWN 865-2881**  
Flea Market Auction every Tuesday at 12:30. Tools, Eggs, Produce, etc  
Buyers & Sellers Welcome

**LANCASTER STOCK YARDS**  
Open 24 hours a day  
365 days a year  
(717)394-2611

**AUCTIONS**

**MONDAY**  
9:00 A.M. - Slaughter Bulls, Heifers, Steers, Cows  
10:00 A.M. - Goats, Veal Calves, Lambs  
12 Noon - Slaughter Hogs

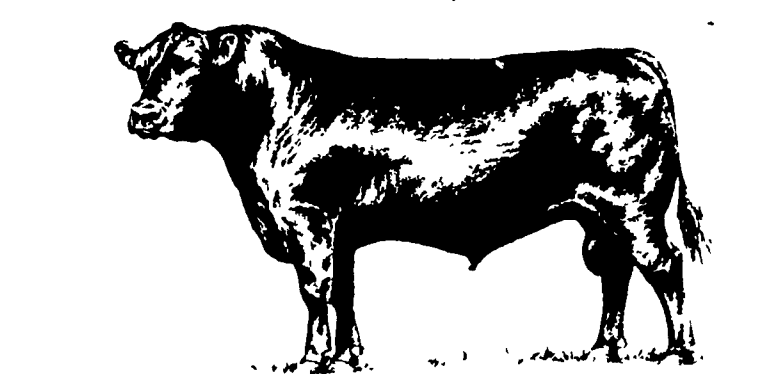
**WEDNESDAY**  
8:00 A.M. - Slaughter Hogs  
10:00 A.M. - Slaughter Bulls, Heifers, Steers, Cows  
11:00 A.M. - Veal Calves, Lambs

**FRIDAY**  
11:00 A.M. - Stocker and Feeder Cattle

**SATURDAY**  
8:00 A.M. - Slaughter Hogs

Next Graded Feeder Cattle Sale  
Friday, Sept. 6 - 11:00 A.M.

**LANCASTER STOCKYARDS, INC.**  
1147 Lititz Pike, Lancaster, Pennsylvania 17601  
Serving The Community For 90 Years



**VINTAGE SALES STABLES, INC.**

**TUESDAY**

**11:00 A.M.**  
SLAUGHTER CATTLE AUCTION — STEERS, BULLS, HEIFERS, COWS, FEEDER CATTLE

**7:30 P.M.**  
CALVES, SHEEP, GOATS — GET CALVES IN EARLY — OUR STATE GRADER STARTS AT 1:00 P.M.

L. ROBERT FRAME, SR., PRESIDENT  
BUS (717) 442-4181  
BUS (717) 768-8204  
HOME (215) 458-8518  
IRWIN MARTIN, FIELD REP. (717) 733-7434  
KENNETH E. HERSHEY, FIELD REP. (717) 442-4874

TRUCKING SERVICE AVAIL-LOCAL & LONG DISTANCE (RT. 30, 10 MILES EAST OF LANCASTER IN PARADISE, PA)

**B&R CATTLE CO.**  
RD 1, Marietta, PA 17547  
Office Phone: (717) 653-8164  
Specializing In Stockers & Feeders  
**JOHN BOWMAN**  
Ph (717) 653 5728  
**RON RANCK**  
Ph (717) 656 9849

**HAY, STRAW & CORN — SALE —**  
Every Friday At 11 AM

**GREEN DRAGON MARKET & AUCTION**  
RD No. 4 Ephrata, Pa. 717-738-1117  
1 mile North of Ephrata on N. State St.  
Out of State Buyers - Cash or Certified Check Only