

Virginia Weekly
Aug. 21, 1991

MARKETS IN REVIEW: AUGUST 15-21, 1991. FEEDER STEERS AND HEIFERS IN VIRGINIA WERE STEADY TO \$3.00 HIGHER AS MIDWEST PRICES WERE \$10.00 TO \$11.00 HIGHER.

SLAUGHTER STEERS AND HEIFERS IN VIRGINIA WERE \$3.50 HIGHER AS MIDWEST PRICES WERE \$3.00 TO \$3.50 HIGHER.

COWS AND BULLS IN VIRGINIA WERE STEADY TO \$5.00 LOWER AS MIDWEST PRICES WERE \$2.25 TO \$6.00 HIGHER. BEEF PRODUCTION WAS 7% HIGHER THAN A WEEK AGO AND 3% HIGHER THAN A YEAR AGO. AVERAGE DRESSED WEIGHTS WERE 11 POUNDS HEAVIER THAN A YEAR AGO.

LAMB PRICES IN VIRGINIA WERE STEADY TO \$4.00 HIGHER AS MIDWEST PRICES WERE STEADY TO \$1.75 LOWER. LAMB PRODUCTION

WAS 5% ABOVE A WEEK AGO BUT 5% BELOW A YEAR AGO. AVERAGE DRESSED WEIGHTS WERE THE SAME AS LAST YEAR.

HOG PRICES IN VIRGINIA WERE \$1.00 HIGHER AS MIDWEST PRICES WERE \$.50 TO \$1.00 HIGHER. FRESH PORK PRICES WERE \$5.00 TO \$10.00 LOWER, EXCEPT HAMS WHICH WERE \$2.50 TO \$5.00 HIGHER. HOG PRODUCTION WAS 11% ABOVE A WEEK AGO AND 3% ABOVE A YEAR AGO. AVERAGE DRESSED WEIGHTS WERE THE SAME AS A YEAR AGO.

THE VIRGINIA DIRECT HOG MARKET AUGUST 15-21, 1991. RECEIPTS FOR THE DIRECT HOG MARKET IN VIRGINIA FOR THE PERIOD TOTALLED 3,953 HEAD COMPARED TO LAST WEEK 3,672 HEAD. THE SOUTHEAST VIRGINIA HOG MARKET CLOSED \$1.00 HIGHER COMPARED TO LAST WEDNESDAY'S TRADING WITH BARROWS AND GILTS: COUNTRY POINTS LOCAL PLANT DELIVERED (30 MILE

RADIUS) US 1-3 210-240 LBS 50.00-50.50 50.00-51.00 US 3-4 210-240 LBS 49.00-50.00 US 1-3 200-220 LBS 45.00-48.00 US 2-4 240-270 LBS 46.00-47.00 US 3-4 270-300 LBS 42.00-43.00 SOWS \$32.50-41.00 AND BOARS 30.00 VALLEY AND NORTHERN VIRGINIA HOGS: 613 HEAD FOR THE PERIOD. US 1-3 210-250 LBS \$49.00-50.00. SLAUGHTER STEERS AND HEIFERS -%; SLAUGHTER COWS -% SLAUGHTER BULLS -%, SLAUGHTER CALVES AND VEALERS -%; FEEDER CATTLE UNDER 600 LBS -%, OVER 600 LBS -%.

PRICE RANGES FOR VIRGINIA WEEKLY AUCTIONS

SLAUGHTER CATTLE STEERS: CHOICE 2-3 1150-1300 LBS --- CHOICE 2-3 1300 LBS & OVER --- HEIFERS; CHOICE 2-3 900-1100 LBS --- CHOICE 2-3 1100 LBS & OVER --- SLAUGHTER COWS UTILITY & COMMERCIAL COWS 44.00-53.00 SLAUGHTER BULLS BULLS - 1-2 900-1300 LBS 53.50-62.00 1-2 1300-1600 LBS 50.00-67.50 1-2 1600 LBS & OVER 55.25-67.50 SLAUGHTER CALVES AND VEALERS VEALERS - HIGH CHOICE & PRIME 200-350 LBS --- GOOD AND CHOICE 200-350 LBS --- CALVES - GOOD AND CHOICE 250-500 LBS 74.00-89.50 SLAUGHTER LAMBS HIGH CHOICE & PRIME 95-125 LBS SPRING 41.00-49.00 SLAUGHTER HOGS US 1-3 200-250 LBS 47.75-49.75 SOWS US 1-3 300-500 LBS 35.00-42.00 500 LBS & OVER 40.00-43.00

FEEDER CATTLE STEERS:

MEDIUM 1 HEIFERS: MEDIUM 1 200-300 LBS 91.00-119.00 300-400 LBS 79.00-100.00 300-400 90.00-120.00 400-500 78.00-93.00 400-500 85.00-106.00 500-600 75.00-86.25 500-600 82.50-98.00 600-700 72.50-84.00 600-700 75.00-92.00 700-800 70.00-78.50 700-800 75.00-85.00 800-900 78.00 800-900 71.00-83.25

S.W. Virginia Livestock
Wytheville, VA
Aug. 20, 1991

SLAUGHTER CATTLE 72 HEAD SLAUGHTER COWS 58 HEAD COWS CUTTER & BONING UT. 1-3 45.00 - 49.00 BREAKING UT. & COMM. 2-4 46.00 - 51.50 CANNER AND LOW CUTTER 1-2 40.00 - 46.00 SLAUGHTER BULLS 14 HEAD BULLS Y.G. 1-2, 900-1300 LB. 55.00 - 61.00 Y.G. 1-2, 1300-1600 LB. 58.75 - 62.75 Y.G. 1-2, 1600 LBS. & OVER 63.25 - 64.75

LAMBS TOTAL RECEIPTS 136 HEAD SLAUGHTER LAMBS 73 HEAD SPRING CHOICE AND PRIME, 95-125 LB. 44.00 CHOICE, 85-125 LB. 40.00 FEEDER LAMBS 36 HEAD FEEDER LAMBS CHOICE AND FANCY, 70-85 LB. 45.00 EWES & RAMS 27 HEAD EWES ALL GRADES 13.00 - 14.00

GOATS 9 HEAD - 15.00-69.00 PER HEAD.

FEEDER CATTLE 243 HEAD STEERS MEDIUM 1 LARGE 1 SMALL 1 MED & LARGE 2 200-300 98.00-106.00 113.00 - - 300-400

94.00-102.00 99.00-106.00 - 88.00- 96.00 400-500 92.00-102.00 100.00-106.00 78.00- 85.00 86.00- 88.00 500-600 90.00- 95.00 - - 80.00- 85.00 600-700 79.00- 86.00 - - 78.00- 82.00 700-800 75.00- 81.00 - - - 800-900 79.00 - - -

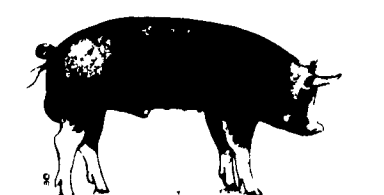
HOLSTEIN STEER MED & LARGE 2 300- 500 82.00- 89.00 500- 700 70.00- 73.00 700- 900 63.00- 66.50

HEIFERS MEDIUM 1 LARGE 1 SMALL 1 MED & LARGE 2 200-300 - - - 300-400 84.00- 88.00 86.00- 88.50 - 80.00- 85.00 400-500 83.00- 86.00 85.00- 87.00 75.00- 80.00 78.00- 83.00 500-600 - - - 74.00- 80.00 600-700 79.00- 83.00 - - - 700-800 74.00- 78.50 - - - 800-900 78.00- - -

BULLS MEDIUM 1 LARGE 1 SMALL 1 MED & LARGE 2 300-400 84.00- 96.00 105.00-111.00 - - 400-500 84.00- 89.00 - - 500-600 75.00- 80.00 - - -

COWS WITH CALVES AT SIDE 4 HEAD M&L-1, 5-8 YRS OLD 550-1050 LBS WITH CALVES 95-250 LBS \$605.00-820.00 PER PAIR.

BABY CALVES RETURNED TO FARMS 40 HEAD NEWBORN TO 4 WKS OLD 45.00-145.00, MOSTLY 80.00-120.00.



Jacques Scoreboard

Chief alfalfa

In 1988-89 Minnesota trials, Chief had the highest resistance rating against Phytophthora and Bacterial wilt plus good scores on Anthracnose, Verticillium and Fusarium resistance. Big yields of top quality forage make this one an all-star.

Multi-plier alfalfa

Multifoliolate with high yield potential and unmatched disease resistance ratings. In University of Wisconsin disease tests, Multi-plier scored 24 of a possible 25 points. Top quality forage, too.

See or Call: **Your Dealer**
Or 1-800-472-3010



WHEAT
New Excel
Tyler-Agri 876-Coker 916
Cardinal - Twain - Dynasty
Early Agri 863 Bearded
SEEDS WILL COME FROM VARIOUS STATES

SMALL GRAINS
Wysor - Sussex
Pennco

TIMOTHY, TORO and CLIMAX TIMOTHY

ALFALFA
84 VVAP VERNAL
Wetfoot Erie

BALER TWINE FERTILIZER DANCO RYE & OTHER RYES

WHOLESALE & RETAIL

BOYDELL FARMS

302 Iona Rd., Lebanon, PA 17042
Phone: 717-272-8943

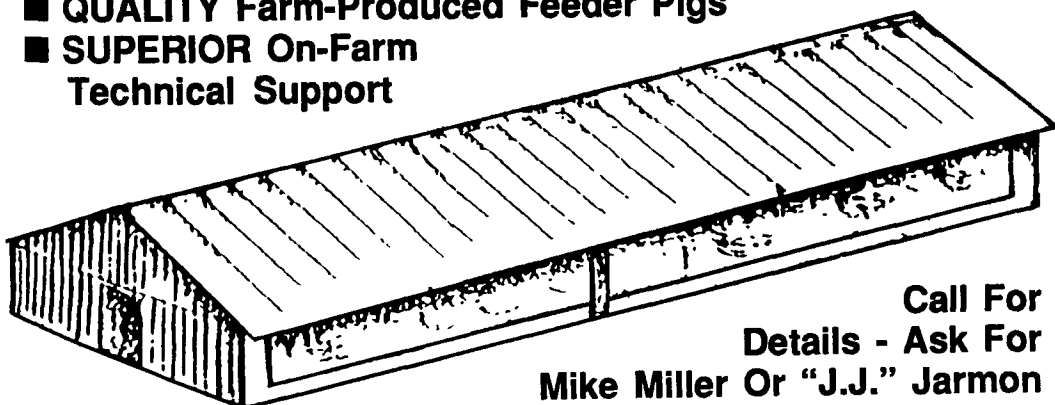


HOG CONTRACTS AVAILABLE!

An Opportunity For People Who Are Capable Of Managing A New 1,000-2,000 Head Finishing Facility

BENEFITS INCLUDE:

- POSITIVE Cash Flow & Depreciation Write-Offs
- MINIMAL Labor & Flexible Hours
- QUALITY Farm-Produced Feeder Pigs
- SUPERIOR On-Farm Technical Support



Call For Details - Ask For Mike Miller Or "J.J." Jarmon

1-800-468-5524

(717) 367-1525

419 West High St., Elizabethtown, PA 17022

DO YOU WANT MORE FARM INCOME?



Build a New 2000 Head Finishing Floor and Contract With Us

- A Steady Monthly Contract Payment
- A Strong Long-Term Contract
- Our Own Hybrid Feeder Pigs
- Weekly Service
- New Concept in Hog Finishing Building Design

Contracts available To Start Building This Fall
Call Today: 717-653-8783
800-544-4574



138 Airport Rd.
Marietta, PA 17547



Esbenshade Mills

Fine Quality Feeds
R.F. BOX 345 MARIETTA, PA 17552