

Lancaster Co. Livestock Market Auctions

Lancaster Livestock Auction

Lancaster, Pa.
Monday, August 12, 1991
 Cattle Calves Hogs Sheep Goats
 Monday's Auction
 595 72 279 914 186
 Last Monday's Auction
 840 60 176 1161 214
 Last Year's Auction
 1159 64 241 900 244

CATTLE: Slaughter steers 50-1.00 higher than last week's close; slaughter heifers 1.00-1.50 lower than last Monday; cows steady; bullocks fully steady; bulls 1.00-1.50 higher. Supply included 58% slaughter steers, 21% slaughter heifers, 9% cows, with the balance bulls.

SLAUGHTER STEERS: Choice 2-4 1075-1525 lb 64.75-68.25, few 68.25-68.75; few Choice 2 1100-1350 lb 68.50-70.00; Select and low Choice 2-3 1050-1350 lb 63.50-66.00.

HOLSTEINS: Choice 1180-1350 lb 62.00-64.10, few 1490-1500 lb 60.60-61.25; Select 1180-1365 lb 60.00-62.00.

SLAUGHTER HEIFERS: Choice 2-3 1000-1350 lb 63.25-66.00, few Choice 2 66.00-66.50; few Choice 2-3 875-1000 lb 60.50-63.00; Select 2-3 950-1150 lb 57.75-62.00.

COWS: LOW DRESSING BULK HIGH DRESSING Breaking Utility & Commercial 2-3 51.00-53.00 Cutter & Boning Utility 1-2 48.00-49.00 49.00-51.00 51.00-53.25 Canner & low Cutter 44.75-46.50 46.50-47.50.

BULLOCKS: Few Select and Choice 1-3 1050-1425 lb 59.50-63.25, couple Choice 2-3 65.00-67.10.

BULLS: Yield grade 1 1300-2200 lb 63.00-66.75, six head 67.50-70.00; Yield grade 2 1000-1500 lb 58.75-63.00.

CALVES: Vealers fully steady; slaughter calves steady. Demand good for Holstein bulls to return to farm

VEALERS: Few Choice 180-300 lb 95.00-110.00; couple High Choice and Prime 180-210 lb 130.00; high Good and low Choice 180-270 lb 75.00-95.00.

SLAUGHTER CALVES: Good to low Choice 300-425 lb 70.00-80.00.

RETURNED TO FARM: Bulk 90-120 lb Holstein Bulls 120.00-160.00.

HOGS: Barrows and gilts 50-1.00 lower, sows steady to weak.

BARROWS AND GILTS: US 1-3 215-255 lb 51.50-52.50. US 1 Few 215-235 lb 53.25-53.50.

SOWS: US 1-3 300-650 lb 40.00-42.50. Medium 1-2 275-450 lb 35.00-37.50.

BOARS: All Weights 35.00-36.00.

SHEEP: Spring lambs 1.00-2.00 lower; slaughter ewes mostly steady.

SPRING LAMBS: Choice 70-105 lb 53.00-60.00, few 55-70 lb 55.00-65.00, 35-45 lb 68.00-75.00; Good to low Choice 60-85 lb 45.00-53.00

SLAUGHTER EWES: Utility and Good 15.00-25.00; Yearlings and two-year olds 25.00-40.00.

GOATS: All goats sold by the head.

Vintage Livestock Auction

PARADISE, PA
 August 13, 1991

CATTLE 819...USDA... Supply included 51% slaughter steers and 43% cows ... Compared with Monday's market: Slaughter steers 1.75 to 2.00 higher; Bullocks and Heifers not fully tested; Cows weak to 1.00 lower; Bulls mostly steady. Choice 2-4, 1100/1450 lbs. slaughter steers 66.35-70.25, few, 70.25-70.75, Choice 2, few 3, 1150/1375 lbs. 70.75-72.75, Choice 3-4 1200/1525 lbs. 63.60-67.00, Select & low Choice 2-3, 1075/1400 lbs. 63.00-67.00; Choice 1300/1575 lbs. Holsteins 62.00-63.75, few high Choice & Prime 1300/1475 lbs. 64.00-65.25, Select 1200/1525 lbs. 59.00-61.00. Breaking Utility & Commercial cows 2-3, bulk 49.50-52.00, high dressing 52.50-54.50, Cutter & Boning Utility 1-2, low dressing 46.75-48.00, bulk 48.00-52.00, high dressing 51.00-52.75, Canner & Low Cutter, low dressing 42.75-46.00, bulk 46.00-47.75. Few Select & Choice sl. bullocks 2-3, 1100/1450 lbs. 60.00-62.50. Yield Grade No. 1, 1150/1900 lbs. sl. bulls 61.75-62.75, No. 2, 1000/1500 lbs. 57.00-60.50.

CALVES 972... Supply included 628 in graded sale of which 85% sold to return to farm ... Vealers steady, Choice not tested. Few High Good and low Choice 140/280 lbs. 72.00-80.00, 80/110 lbs. 60.00-75.00, Standard and low Good 55/80 lbs. 40.00-52.00. Farm Calves: No. 1, Holstein Bulls 110/125 lbs. 162.00-171.00, 95/105 lbs. 176.00-180, 90 lbs. 161.00-164, 80/85 lbs. 122.00-127, Small frame 100/115 lbs. 160.00-163, 90/95 lbs. 120.00-134; Hol. Heifers 100/125 lbs. 175.00, 80/95 lbs. 127.00-130, 60/75 lbs. 65.00-75.00.

SHEEP 23...SPRING SLAUGHTER LAMBS... Insufficient volume to fully test a trend. Few Good & low Choice 60/110 lbs. 40.00-45.00.

GOATS 1... Insufficient volume for a market test - all per head.

Peoria Sheep

PEORIA, ILLINOIS
 Tuesday, August 13, 1991
SHEEP: 400 TRADING MODERATE. COMPARED WITH LAST TUESDAY SLAUGHTER LAMBS STEADY.
SLAUGHTER LAMBS: CHOICE AND PRIME 120-130 LBS. 48.00-49.00; PKG 50.00 110-115 LBS. 46.00-47.00; 85-100 LBS. 42.00-45.00

Large mainly 45.00-55.00, few Billies 65.00-85.00 with couple head 100.00; Medium 35.00-40.00, few 40.00-45.00; Small, mainly kids, 25.00-30.00, few 30.00-35.00.

Lancaster Livestock Auction

Wednesday, August 14, 1991
 Cattle Calves Hogs Sheep Goats

WEDNESDAY'S AUCTION
 12 0 122 0 0
LAST WEDNESDAY'S AUCTION
 16 2 50 12 0
LAST YEAR'S AUCTION
 14 3 109 0 0

CATTLE: Insufficient volume for a market test.

VEAL CALVES: No market test.
HOGS: Insufficient volume barrows and gilts to test trends; sows weak to 1.00 lower.

BARROWS AND GILTS: US 1-3 215-250 lb 50.00-50.75.

SOWS: US 1-3 300-600 lb 38.50-41.00.

BOARS: All weights 35.00-36.00.

SHEEP: No market test.

GOATS: No market test.

Keister's Middleburg Auction

MIDDLEBURG, PA
 August 13, 1991

CATTLE 446... PDA ...Few High Choice & Prime slaughter steers 71.50-73.75, Choice 1100/1500 lbs. 66.50-71.25, high yielding Select 66.00-69.75; few Choice Holsteins 61.50-64.25, Select 58.00-62.25. Few Choice sl. heifers 60.00-69.00. Breaking Utility & Commercial sl. cows 48.25-53.25, couple to 55.00, Cutter & Boning Utility 47.50-52.25, few to 53.75, Canner & low Cutter 43.75-47.25, Shells down to 41.00. Yield Grade No. 1, 970/2300 lbs. sl. bulls 57.00-63.00. Feeder Cattle: Few M-1, 300/425 lbs. heifers 73.00-81.00. M-1, 350/750 lbs. bulls 62.00-84.00, L-2, 400/700 lbs. 60.00-78.00.

CALVES 211...Few Choice vealers 100.00-120.00, few Standard and Good 70/95 lbs. 60.00-70.00, few Utility 50/75 lbs. 50.00-60.00. Farm Calves: Holstein bulls No. 1, 90/130 lbs. 120.00-175.00, No. 2, 70/120 lbs. 75.00-125.00; Hol. Heifers 85/135 lbs. 100.00-182.50.

HOGS 407...BARROWS & GILTS: US No. 1, 225/250 lbs. barrows and gilts 54.00-54.75, No. 1-2, 220/250 lbs. 53.00-54.00, 1-3 200/260 lbs. 52.00-53.00, 2-4 200/270 lbs. 47.00-52.00. US No. 1-3 300/700 lbs. sows 40.00-43.00. Boars 36.00-38.00.

FEEDER PIG 298...US No. 1-3 20/40 lbs. feeder pigs 20.00-36.50, couple lots 60 lbs. 47.00 --- all per head.

SHEEP 99...SPRING SLAUGHTER LAMBS...Good & Choice 60/130 lbs. spring slaughter lambs 40.00-50.00, 30/55 lbs. 57.50-80.00. Slaughter sheep 12.00-23.00. - all cwt.

GOATS 16...Few Large 40.00-52.00, Medium 23.00-43.00. --- all per head.

New Holland Livestock Auction

Lancaster, Pa.
 Thursday, August 15, 1991
 Cattle Calves Sheep Goats

Today 766 743 229 186
Last Thursday 1201 779 146 132
Last Year 1004 678 140 90

CATTLE: Slaughter steers firm to 50 higher, instances 1.00 higher; slaughter heifers steady; cows fully steady, with Canner and low Cutter 1.00-2.00 higher; bullocks and bulls steady on small supply. Supply included 43% slaughter steers and 46% cows.

SLAUGHTER STEERS: Choice 2-4 1100-1475 lb 68.50-70.75, few 71.00-71.50; few Choice 2 1150-1375 lb 71.75-73.00; Choice 3-4 1300-1500 lb 67.00-68.00; Select and low Choice 2-3 1100-1425 lb 67.00-70.50.

HOLSTEINS: Select and Choice 1300-1455 lb 57.75-62.00.

SLAUGHTER HEIFERS: One lot Choice 2-3 1115 lb 66.35; few Select and low Choice 2-3 870-1000 lb 61.75-64.00; few Select and Choice 2-3 810-1100 lb Holsteins 55.25-58.75.

COWS: LO DRESSING BULK HI DRESSING Breaking Utility & Commercial 2-3 49.25-51.75 52.00-54.75. Commercial 3-4 48.25-50.50. Cutter & Boning Utility 1-2 48.50-49.75 50.00-52.50 52.50-53.00. Canner and low Cutter 43.75-47.00 47.00-50.25.

BULLOCKS: Choice 2-3 1100-1375 lb 67.25-67.75; couple Select 2-3 1025-1150 lb 63.50-65.50.

BULLS: Yield grade 1 1500-2270 lb 62.00-65.25; Yield grade 2 1000-1500 lb 59.00-61.00.

CALVES: Choice vealers steady to weak, high Good and low Choice 80-110 lb 2.00-5.00 lower. Demand good for Holstein bulls to return to farm; supply included 95 head 150-600 lb calves, with 65 head sold to return to farm.

VEALERS: Choice 190-410 lb 83.00-100.00; high Good and low Choice 180-530 lb 77.00-82.00, 80-110 lb 62.00-70.00; Standard and low Good 60-85 lb 55.00-62.00.

RETURNED TO FARM: Bulk 95-125 lb Holstein Bulls 140.00-180.00, few 182.00-187.00, 85-90 lb 100.00-140.00, few 75-80 lb 75.00-100.00; small frame 90-120 lb 100.00-145.00; few 150-250 lb Beef Breed, Bulls and Heifers, 95.00-114.00, 275-425 lb 75.00-90.00.

SHEEP: Spring lambs 2.00-3.00 lower; slaughter ewes steady to weak.

SPRING LAMBS: Choice 65-95 lb 52.00-57.00, few 30-50 lb 70.00-90.00; Good to low Choice 60-95 lb 45.00-52.00.

SLAUGHTER EWES: Utility and Good 16.00-24.00; Yearlings and two-year olds 28.00-41.00.

GOATS: All goats sold by the head. Large 65.00-81.00, few 94.00-105.00; Medium 40.00-60.00; Small, mainly kids, 20.00-36.00, few 14.00-19.00.

Lancaster County Weekly

Lancaster, Pa.
 Friday, August 16, 1991
 Cattle Calves

This Week 2500 1800
Last Week 2821 1756
Last Year 3113 1864

CATTLE: Slaughter steers sold higher throughout the week to close 3.00-4.00 higher; slaughter heifers 1.00-1.50 lower; cows uneven, breaking Utility and Commercial steady, boning kinds 50-1.00 higher with Canner and low Cutter closing 2.00 higher; bullocks fully steady; bulls 1.00-1.50 higher. Supply included 44% slaughter steers, 7% slaughter heifers, 31% cows, 5% bulls, with the balance feeders.

SLAUGHTER STEERS: Choice 2-4 1100-1475 lb closed at 68.50-70.75, few 71.00-71.50; Choice 2 1150-1375 lb 71.00-73.00; Choice 3-4 1300-1500 lb 65.00-68.00; Select and low Choice 2-3 1075-1425 lb 64.00-68.00, few 68.00-69.00.

HOLSTEINS: High Choice and Prime 1330-1475 lb 64.00-65.25; Choice 1180-1575 lb 62.00-64.10; Select 1150-1400 lb 59.00-62.00.

SLAUGHTER HEIFERS: Choice 2-3 975-1350 lb 63.25-66.35; few Choice 2-3 875-1000 lb 60.50-63.00; Select 2-3 950-1150 lb 57.75-62.00.

COWS: LOW DRESSING BULK HIGH DRESSING Breaking Utility & Commercial 2-3 49.25-52.00 52.00-54.75. Commercial 3-4 48.00-50.50. Cutter and Boning Utility 1-2 48.00-49.75 50.00-52.50 52.50-53.00. Canner and low Cutter 43.75-47.00 47.00-50.25.

BULLOCKS: Choice 2-3 1100-1375 lb 65.00-67.75; Select 1-3 1025-1425 lb 59.50-65.50.

BULLS: Yield grade 1 1350-2270 lb 62.00-66.75, six head 67.50-70.00; yield grade 2 1000-1500 lb 58.75-63.00.

CALVES: Vealers weak, instances 5.00 lower on high Good and low Choice 80-110 lb; slaughter calves steady. Demand good for Holstein bulls and heifers to return to farm.

VEALERS: Choice 190-410 lb 83.00-100.00, few 100.00-110.00; couple high Choice and Prime 180-210 lb 130.00; high Good and low Choice 180-425 lb 75.00-82.00, 80-110 lb 62.00-70.00; Standard and low Good 55-80 lb 40.00-52.00

SLAUGHTER CALVES: Good to low Choice 300-425 lb 70.00-80.00.

RETURNED TO FARM: Bulk 95-125 lb Holstein bulls 140.00-180.00, few 182.00-187.00, 85-90 lb 100.00-140.00, few 75-80 lb 75.00-100.00; small frame 90-120 lb 100.00-145.00, few 145.00-163.00; few 100-120 lb Holstein Heifers 175.00, 80-95 lb 127.00-130.00.

VINTAGE SALES STABLES, INC.



COMPETITION IS THE ADVANTAGE MARKET YOUR LIVESTOCK THE VINTAGE WAY



TUESDAY 11:00 A.M.

SLAUGHTER CATTLE AUCTION— STEERS, BULLS, HEIFERS, COWS, FEEDER CATTLE

7:30 P.M.

CALVES, SHEEP, GOATS * GET CALVES IN EARLY— OUR STATE GRADER STARTS AT 1:00 P.M.

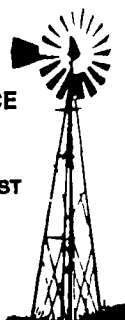
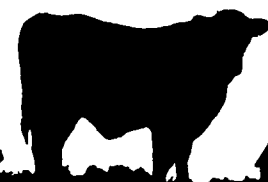
★ NEW ★

FEEDER & STOCKER ORDERS NOW BEING TAKEN

"A VINTAGE CUSTOMER IS A HAPPY CUSTOMER"

L. ROBERT FRAME, SR., PRESIDENT
 GLENN S. FRAME, MANAGER
 BUS (717) 442-4181
 BUS (717) 768-8204
 HOME (215) 458-8518
 IRWIN MARTIN, FIELD REP. (717) 733-7434
 KENNETH E. HERSHEY, FIELD REP. (717) 442-4874

TRUCKING SERVICE AVAIL-LOCAL & LONG DISTANCE (RT. 30, 10 MILES EAST OF LANCASTER IN PARADISE, PA)



LEBANON VALLEY LIVESTOCK MARKET, INC.

1 mile East of Fredericksburg along Rt. 22
PHONE JONESTOWN 865-2881

Flea Market Auction every Tuesday at 12:30. Tools, Eggs, Produce, etc
 Buyers & Sellers Welcome

B&R CATTLE CO.
 RD 1, Marietta, PA 17547
 Office Phone: (717) 653-8164
 Specializing In Stockers & Feeders
JOHN BOWMAN
 Ph (717) 653 5728
RON RANCK
 Ph (717) 656 9849

HAY, STRAW & CORN — SALE —
 Every Friday At 11 AM

GREEN DRAGON MARKET & AUCTION

RD No. 4 Ephrata, Pa. 717-738-1117
 1 mile North of Ephrata on N. State St.
 Out of State Buyers - Cash or Certified Check Only



Open 24 hours a day

365 days a year

(717)394-2611

AUCTIONS

MONDAY

9:00 A.M. - Slaughter Bulls, Heifers, Steers, Cows
 10:00 A.M. - Goats, Veal Calves, Lambs
 12 Noon - Slaughter Hogs
WEDNESDAY
 8:00 A.M. - Slaughter Hogs
 10:00 A.M. - Slaughter Bulls, Heifers, Steers, Cows
 11:00 A.M. - Veal Calves, Lambs
FRIDAY
 11:00 A.M. - Stocker and Feeder Cattle
SATURDAY
 8:00 A.M. - Slaughter Hogs

Next Feeder Cattle Sale Friday, August 30 - 11:00 A.M.

No Hog Sale Sat., Aug. 31 - Regular Sale Mon., Sep. 2, As Usual

LANCASTER STOCKYARDS, INC.

1147 Littitz Pike, Lancaster, Pennsylvania 17601
 Serving The Community For 90 Years