



**3-Wheel Loader**  
Runs Good  
**\$2,500**  
301-486-6691



1978 JD 8630 4076 Hrs., 3 PH, PTO, 18.4-38 Radials 75%, Excellent \$29,000  
1991 JD 610 Chisel 25 Ft. Flex-Fold, Single Pt. Depth, Tandem Wheels, Only Plowed 250 Acres, New cond. \$10,500  
Krause 2416 Disc, 26 ft. cut \$5,000  
**(717) 758-2076**

**TRACTORS**

JD 4020 JD 2555 2WD w/Cab  
JD 2940 MFWD Farmall 140 w/Belly Mower

**COMBINES**

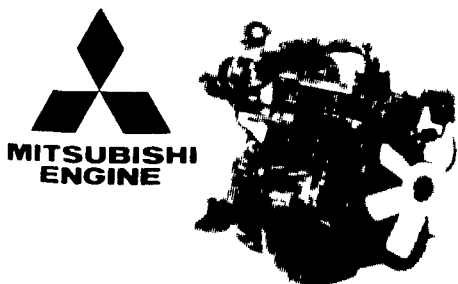
JD 7720 Been Thru The Shop Recond., Field Ready  
JD 8820 Heavy Duty Final Drive, Duals 4WD w/20' Grain Head, Totally Reconditioned  
JD 8820, 1980, w/2000 Hrs., 843 Corn Head And 220 Grain Platform, Real Sharp  
JD 1980 6620 Combine, Very Good Cond., Field Ready  
AC F2 w/Hydro Traction, 1980 Model w/Low Hrs., 438 Cornhead and 13' Floating Grain Head  
Waiver Of Finance On Used Combines  
Until Sept. 1, 1992

**MISC.**

JD 7000 6RN Corn Planter  
Set Of Model 1350-1450 JD 7x16 Plows  
NH 320T Baler, Extra Sharp  
NH 320T Baler w/Kicker  
7000 12 Row Front Folding Planter  
(1) 7000 8 Row, 30" Rows, Liquid Fert. And Transport  
JD 16A Flail Chopper  
Brillion 15' Flail Cutter  
Woods 121 Rotary Mower  
Schwartz 880 Feeder/Mixer Wagon  
JD 450 Manure Spreader  
JD 347 Baler  
JD 336 Baler

**Cooper Ent., Inc.**

Cecilton, Md.  
301-275-2195



**THERE'S MORE THAN JUST POWER IN THE NAME**

**There's More Selection:** 5 to 5,000 hp with specific concentration from 10 to 50 hp

**There's More Exp.:** For over 60 years these engines have proven themselves the world over, in the most demanding applications

**LET'S TALK DIESEL POWER**

**RUFUS BRUBAKER**  
**REFRIGERATION & POWER**  
**JAMES E. HORST**  
468 Drywells Road  
Quarryville, PA 17566  
717-786-1617

**WHITE FIELD BOSS MODEL 31**

4 WD w/loader, excellent condition, low hours, tractor may be seen at G & D Repair, Manheim, PA  
717/664-2207  
or  
717/665-6998

**Madey Farms Belarus Sales & Service**  
814-467-8839

IH 1486 4 pst, TA, dual PTO .....\$8,500  
IH 1486 4 pst 20.8x38 tires.....\$8,500  
White 2-150, solid .....\$7,500  
AC 7580, rent, lease, buy .....\$15,500  
IH 1586 4 post, dual PTO .....\$9,600  
IH 1566, 1976 model.....\$7,900  
IH 1466 cab/air, '76 model, sharp..\$8,500  
IH 1256 diesel, nice .....\$6,600  
Case 970 diesel, nice .....\$6,600  
Case 1030 diesel.....\$4,600  
MF 1130 parts or repair .....\$3,000

**Wanted:**

Roll Back Truck, IH S Model 466 Eng., 26,000 GVW, Will Trade Tractors

**KELLER'S FARM MACHINERY**

116 Richlandtown Pike  
Quakertown, PA 18951  
215/536-4046

**USED TRACTORS**

Ford TW20, 4WD w/ cab, air and dual power	Ford 3600 dsl., PS, w/ canopy
Ford 8000 w/dual power	Ford 3550, gas w/ loader and weight box
Ford 7700, 4WD, dual power, w/cab	Ford 3000 gas, 8 spd.
Ford 7610, 4WD, dual power, ROPS and canopy	Ford 1720 4x4 w/dr.
Ford 4610 Series 2 w/ factory cab	Ford 801 w/loader 4x4 w/dr.
	1310 4WD w/dr.

**TILLAGE EQUIPMENT**

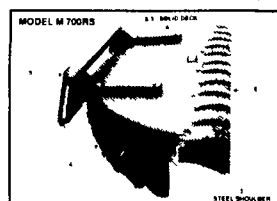
JD 15' plowing disc	Dunham 10'
JD 15' cultimulcher	cultimulcher
Chatanooga 13' cultimulcher	Brillion 13' cultimulcher
JD 11' wheel disc	Kewanee 13' tandem disc
	Ford 10' disc



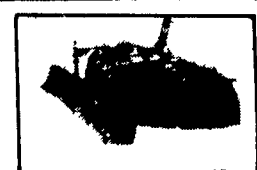
\* TIME AND ENERGY SAVINGS UP TO 60% TIME SAVING  
\* SAVES ON CONCRETE WEAR  
\* OUTLASTS BUCKET WEAR

\* MADE FROM HEAVY INDUSTRIAL EARTH MOVER TIRES  
\* THREE DIFFERENT HOOK UPS BUCKET, THREE POINT, BOBCAT

\* ACID RESISTING PAINT  
\* WIDTHS FROM 6 to 8 1/2 FEET  
\* Larger Widths Special Order

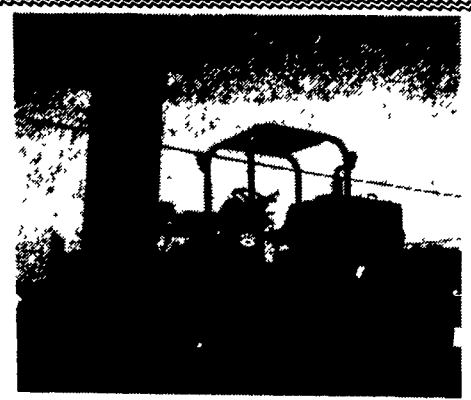


1 Easy to get in and out of skid loader  
2 Manure does not splash up on skid loader  
3 Stronger than rubber tires steel shoulder to keep it standing up  
4 Easily replaceable rubber strips  
5 Adaptable to most U.S. built skid loaders  
6 Rubber cross bar for pulling manure out of corners



3 POINT SCRAPER BUCKET

**SALES INQUIRIES:**  
**ROBERT H. ROHRER & SONS**  
123 Charlestown Rd.  
Washington Boro, PA 17582  
717-684-6500



**14,000 Lb. Cap. Nasco**  
All terrain, 1988 JD Diesel, 750 hours, new tires  
**\$15,000**  
301-486-6691



**Vermeer Towable Forklift**  
6 Ft. Forks, Ideal For Round Bales  
**\$1,200**  
301-486-6691

**USED TRACTORS**

Ford 3000 Gas w/Loader..... \$5,000  
Ford 4000 Diesel w/Loader..... \$6,500  
John Deere 1530 Diesel w/Loader..... \$7,500  
John Deere 850 Diesel Turf Tires/72" Midmount Mower ..... \$4,900  
Klotl 2204 22 HP Diesel, 4 WD, Turf Tires, Power Steering, 100 Hours..... \$6,800  
Klotl 1714 17 HP Diesel 4 WD, Turf Tires, 60" Midmount Mower ..... \$6,000  
3 Point Backhoe 8' Reach ARPS w/Hydraulic Pump, Demo ..... \$4,000  
Farmall "M" w/Loader ..... \$900  
Oliver 550 w/Loader..... \$4,250  
8N Ford ..... \$2,000  
9N Ford ..... \$2,000

**RINGO HILL FARMS EQUIPMENT CO., INC.**

1624 Rt. 212, Pleasant Valley  
Quakertown, PA 18951  
215/346-7340  
FAX 215/346-8041

**TRACTORS**

Oliver 1850 diesel, w/3 speed, good condition & rubber  
MF 1080 diesel  
MF 180 diesel, good condition  
MF 165 diesel, 8 speed, new paint, good rubber  
MF 165 diesel, 28" rubber, tractor completely overhauled  
MF 35 gas tractor  
JD 8200 grain drill, 14x7, nice

**EQUIPMENT**

Bush Hog 7 tooth chisel plow, high clearance  
MF 880 5x16 spring reset plow  
9' Brillion cultipacker  
12' Brillion packer w/wheels  
12' JD packer  
(2) 3' packers  
Used Brillion cultipacker parts  
Fox forage wagon 16' w/tandem axle gear  
Gravity bin wagon and Large gravity bin  
5' rotary mower, 3 pth.  
Ford 12' field cultivator  
IH 14' 3 pth cultivator

**MF Tractor Parts Dismantling: 20, 30, 35, 40, 50, 65, 85, 90, 150, 185, 175, 178, 180, 1080, 1100, 1130, 1135, 1150 w/cab**

**NOLT'S EQUIPMENT**  
403 Centerville Rd., Newville, PA 17241  
(717) 776-6242 No Sunday Calls  
No Out-Of-State Personal Checks

NH S717 Harvester, 2RW and hay pickup, and electric controls.  
215/932/8170 or 301/371-6429.

NI 2100 gallon liquid spreader with suction pump. Woods 15' rotary cutter, JD 14' wing transport harrow, JD 1600 10' pull-type chisel plow, IH 656 gas tractor, 717-694-3360.

NI 324-329 picker-sheller, 2 row wide, excellent condition, used on 50 acres/year. \$3300  
301-836-2053

NI 705D uni-tractor w/AC; 767 Super Chopper, 766 hay pickup; 763 3RN corn head, field ready \$8000. 717-677-8789.

NI 705 Uni, GMC Diesel, 737 Husker, 743 QT 3R 30" Head, shed kept, \$10,000. 301/898-7426.

NI 713, grain head, excellent condition; NI 760 corn chopper; NI 763 3-row narrow chopper head, NI 710 combine; Grange silo staves and hoops, 717-275-4232.

Old Farm and Construction Toys, Trucks, Literature, Signs, Pedal Tractors, Advertising Memorabilia, etc. for sale \$5.00 for 50 page list Shown by appointment I Buy-Sell-Trade. Lloyd J. Wenger, 831A Hilltop Rd., Myerstown, PA 17067. 717/866-7147 evenings.

Oliver 77 recent overhaul and clutch, 59HP, 12V system. Frederick, MD 301-775-2095.

Oliver Cletrac HG Crawler, very good condition throughout, \$2,100 Call 717/738-2573.

Oliver OC12 Dozer w/10' blade. 215/932-2767.

Oliver OC6 Diesel w/loader. '79 Bronco, many new parts. MF 3 Bottom Category 2 Plow. 8' Int Disc. 908/637-4632 before 10PM.

**PARTS PRICED RIGHT CRAWLER TRACTOR PARTS CURRENTLY DISMANTLING**  
AC, Cat, IHC, JD, Case, Michigan, Hough, Galion and others. Loaders, dozers, graders, excavators, backhoes. Many parts removed & checked, ship anywhere.

**NATIONWIDE PARTS LOCATER SERVICE NEW ARRIVALS FOR DISMANTLING**  
AC-HD-6, AC-260E, AC-16B, Cat D3-B, IHC TD-15B, CAT D7E & D7F. And more--inventory changes weekly  
**BALANDA EQUIPMENT**  
PO Box 407  
Route 29  
Palm, PA 18070  
1-800-322-8030

Polled Dorset Ewe Lambs, 6 months old. Your Choice \$60 head. Northumberland Co 717-286-9380

PTO MC Corn Binder w/bundel carrier, top condition, \$850. 607/264-3690

Rebuilt 16' Silo Unloader Jamesway Ring Drive, New Auger, Auger Cover, Knives, Spout and More Like New. (607)849-3291

Rebuilt Badger Barn Cleaner Transmission Model 570 For Sale New Gears and Shaft (607)849-3291

Rye seed, wheat seed, from last year's certified Ferguson 3pt mower JD 825 3pt roll over plow Lehigh County (215)262-9781.

Schueler PTO Feeder Cart, runs excellent. \$1,000 301/898-7426

Scraper Blade, transport, 7' on rubber, \$500 301/898-7426.

Skid Steer Loader, Case-1816, 34" wide, rebuilt engine, 2 buckets and forks. \$3,250 215/297-0700.