

# York County 4-H Beef Show

(Continued from Page B24)

Orcen Little, Travis Reid, Class 6 - Robin Shive, Jennifer Sweitzer, Sandy Eisenhour; Division 2 Champion - Robin Shive, Reserve Ed Livingston, Class 7 - Kenley Jo Myers, Brett Bishard, Wade Myers, Class 8 - Tammi Grubb, Jennifer Altobelli, Kim Frantz, Class 9 - Suzanne Bishard, Matthew Altobelli, Suzanne Bishard, Division 3 Champion - Kenley Jo Myers, Reserve - Suzanne Bishard, Grand Champion Steer - Kenley Jo Myers, Reserve Champion - Robin Shive



Champion Sr. Showman - Sandy Eisenhour. Judge: Bill Wise. Plaque Donor: Stoney Ridge Farm - Tom Frantz.



Champion Jr. Showman - Suzanne Bishard. Judge: Bill Wise. Plaque Donor: Gordon Shive Family, Robin and Cathy Shive.

A study by the U.S. Department of Agriculture found that yogurt consumption has increased by about 800 percent over the last 20 years. Recent sales figures total \$1.2 billion annually, with Americans consuming 1.3 billion pounds of yogurt each year—just over 5 pounds per person.

During the 1904 St. Louis World's Fair, the ice cream cone industry was born. When ice cream vendors ran out of dishes, Ernest Hamwi, a nearby concessionaire, offered a rolled-up version of the wafer he was selling as an edible ice cream "container."



Champion Intermediate Showman - Joyce Stough. Judge: Bill Wise. Plaque Donor: EGL Polled Hereford, Edwin Livingston.



Champion Novice Showman - Brett Bishard. Judge: Bill Wise. Plaque Donor: Holrick Farm, Angle Simms.



Reserve Champion Steer - Robin Shive. Judge: Bill Wise. Plaque Donor: Tim and Nancy Livingston, represented by Ed Livingston.

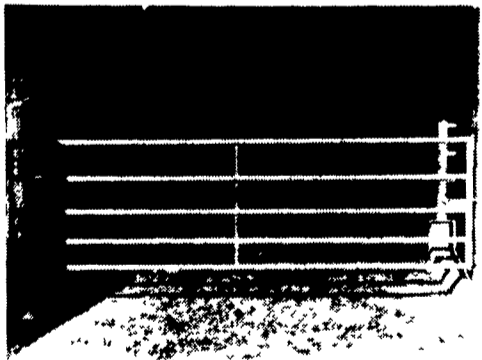
## DAIRY & CATTLE FARMERS

Let Us Design Your Feed Lots To Best Meet Your Needs

★ Now With Baked On Epoxy Powder

### CUSTOM BUILT GATES

- \* Heavy Hinges & Spring Latch
- \* Posts Free From Sharp Edges
- \* 2" OD 11 ga. Tubing



### FEED THRU FENCING

Vertical And Slanted Bars



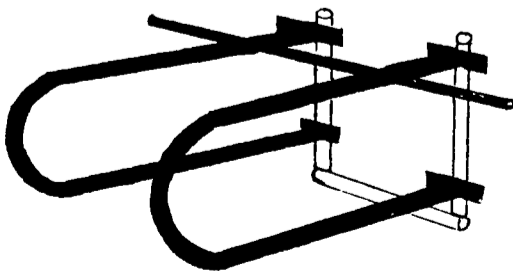
### SELF LOCKING PANELS

- 3 Sizes
- Cows
- Heifers
- Calves



### LOOP STYLE FREE STALLS

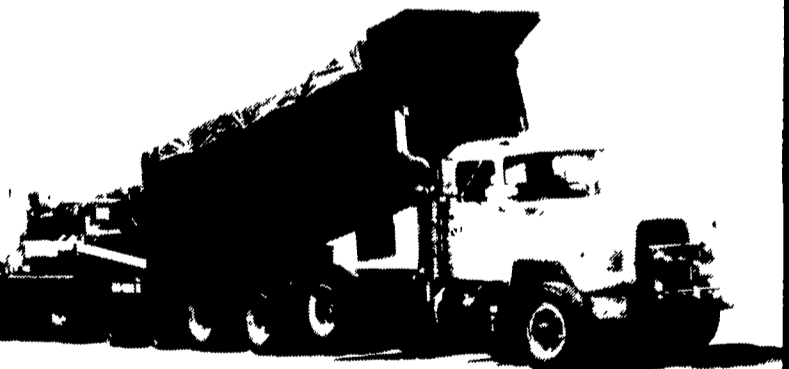
- \* Clamped Cross Over Pipe
- \* Mounting - T Angles
- \* 2½" OD Tubing 105 Wall



1805 Mountain Rd.  
Manheim, PA 17545

# KREIDER MFG. CO.

(717) 665-6259  
1-800-447-4863



## Quality Asphalt Paving

- Farms
- Driveways
- Parking Lots
- Streets

**LYONS & HOHL**  
**PAVING**  
P.O. Box 161  
East Earl, PA 17519  
Phone (717) 355 9219

### Attention

We Are Also Available For Grading,  
Stoning & Rolling Which Is The  
First Step In A Quality Paving Job.

For Estimates Call **717-355-9219**