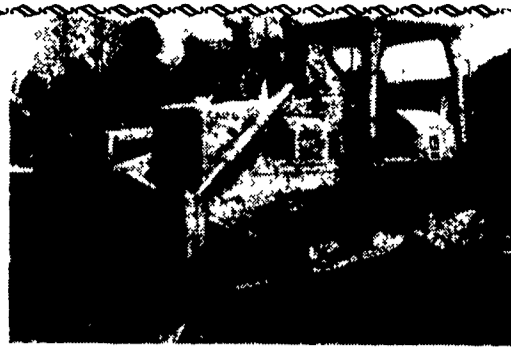


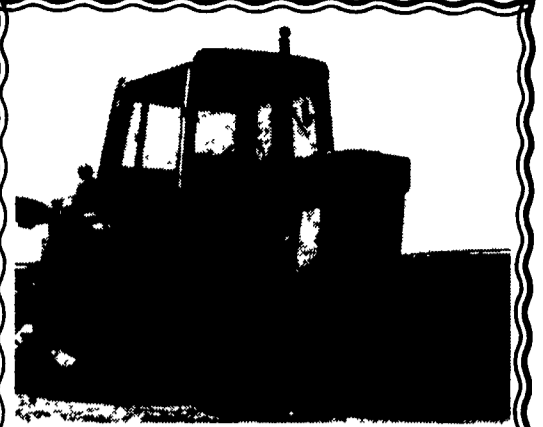
**LANCASTER FORD TRACTOR, INC.**  
**YOUR LANCASTER COUNTY RELIABLES OFFERS LOCAL LANCASTER COUNTY USED TRACTORS**

- Ford 1220 4WD Dsl. Hydro. w/Qt. Loader, 60" Mower & Rear Blade, 441 Hrs., Like New
  - Ford 2000 Dsl. PS, Hyd. Valve
  - Ford 7700 Dsl., Cab, Air, New 7710 Dsb Eng.
  - Ford 8000 Dsl., 18.4x38 Radials, Very Clean
  - Ford 5000 Dsl. 10 Speed, Runs Nice
  - Ford 641 Gas, 4 Speed, Recent Overhaul, Clean
  - Ford 800 Gas 5 Speed Trans.
  - Ford 860 Gas, 5 Speed Live PTO
  - Satoh 370d Dsl. 4WD Front Blade, Rear Mower, 3 Pt. Plow & 3 Pt. Disc Harrow
  - Ford CL45 Skid Loader 40 HP Dsl., 1000 Hrs.
  - Mustang 442 Skid Loader, 40 HP Dsl., Good Cond.
  - Ford 555B TLB Dsl, Cab, Good Cond., Very Clean
  - Ford 655A TLB Dsl., Cab, Well Maintained, Extras, Only 2600 Hours
  - Ford 555C TLB Dsl., Cab, Very Clean Only 600 Hrs.
  - John Deere 310A TLB Cab, Extra Buckets & Tires
- 9.90% FINANCING AVAILABLE THROUGH FMCC AT LANCASTER FORD TRACTOR INC.**  
 Rt. 741 Just Off Route 283 Lancaster, PA 17601  
 Phone (717) 569-7063



**1979 Cat D6-D**  
 New Torque - New Tracks, New Final, This Tractor Runs Great, Excess To Our Needs  
**\$39,000**  
**Burgess Construction Co.**  
 717-746-1300 Days 1372 Nights

**For Sale:**  
 1 8' XP silo press \$7,000  
 1 8' Polystore charger silo press \$11,000 with customer list, or \$17,000 for both  
**Elmer King**  
 Gap, PA  
 717-768-7005



**IH 186 HYDRO**  
 Runs Exc., Field Ready  
**\$9,000**  
 301-833-9091

**MF 3650 DEMONSTRATOR**



130 HP, 4 Wheel Drive  
 List: \$63,532.00  
**SALE: \$40,475.00**  
**Lebanon Valley Implement Co., Inc.**  
 700 E. Linden Street, Richland, PA 17087  
 717-866-7518

**Best Buys in Used Equipment**

- |   |   |  |
|---|---|--|
| <p><b>TRACTORS</b></p> <ul style="list-style-type: none"> <li>• Case SC Tractor</li> <li>• Case 930 Tractor</li> <li>• Case 430</li> <li>• Case 1030</li> <li>• Case 1070 w/Cab</li> <li>• Case 1370 w/Cab</li> <li>• IH 2500A Tractor w/Loader</li> <li>• David Brown 990 w/Loader</li> <li>• David Brown 990</li> <li>• Int. 544, For Parts</li> <li>• Int. 1066</li> <li>• Int. 656 Hydro</li> <li>• Int. 686</li> <li>• Int. 3088</li> <li>• Farmall 300 w/Loader</li> <li>• Agri Power 8000</li> <li>• Ford 4000 Tractor</li> <li>• Ford 2000 w/Slide Mounted Industrial Mower</li> <li>• Ford 8N</li> <li>• Hesston 60-66</li> <li>• JD "B"</li> <li>• IH 885</li> </ul>  | <p><b>LOADERS</b></p> <ul style="list-style-type: none"> <li>• Case 450 Dozer</li> <li>• Case 530 Backhoe</li> <li>• (2) Case 1835B Uni-Loaders, Diesel</li> <li>• Case 1737</li> <li>• Case 1830</li> <li>• Case 1845 Diesel</li> <li>• Case 580D Loader Backhoe- Like New!</li> <li>• NH 445 Skid Loader</li> <li>• Bobcat 543</li> <li>• Gehl 4400, \$3,700!</li> <li>• Ford 340 Skid Loader, \$2,500!</li> </ul> <p><b>HAY EQUIPMENT</b></p> <ul style="list-style-type: none"> <li>• IH 1190 Windrower</li> <li>• NH 469 Windrower</li> <li>• NH 479 Windrower</li> <li>• NI 404 Rake</li> <li>• (2) Hesston 1014 — Windrowers — 12' &amp; 14'</li> <li>• Hesston 1090 Windrower</li> <li>• Hesston 1091 Windrower</li> <li>• Case 650 Windrower</li> <li>• IH 46 Baler</li> <li>• JD 336 Baler</li> <li>• NI 456 Round Baler</li> <li>• IH 27 Baler, For Parts</li> <li>• IH 445 Square Baler</li> <li>• NH 78 Baler</li> <li>• NH 271 Baler</li> <li>• NH 38 Chopper</li> <li>• NH 1495 Self-Propelled Haybine</li> <li>• NH 489 Haybine, Like New!</li> <li>• NH 144 Hay Turner, Like New — Only 30 Acres!</li> </ul> | <p><b>MISCELLANEOUS</b></p> <ul style="list-style-type: none"> <li>• NH 36 ft. Elevator</li> <li>• NH 40 Ft. Elevator</li> <li>• King Wise 28' Elevator</li> <li>• Gehl 1540 Blower</li> <li>• (3) Gehl 99 Blowers</li> <li>• IH 56 Blower</li> <li>• Int. 600 Blower</li> <li>• NI Blower</li> <li>• Automatic Roller Mill</li> <li>• Scavenger 1678 Manure Spreader</li> <li>• NI 214 Spreader</li> <li>• NI 218 Spreader</li> <li>• NI 224 Spreader</li> <li>• NI 245 Spreader</li> <li>• NH 353 Spreader</li> <li>• HM 1666 Spreader</li> <li>• HM 1674 Spreader</li> <li>• Gehl 350 Spreader</li> <li>• Gehl 250 Spreader</li> <li>• NI 243 Spreader</li> <li>• JD 54 Spreader</li> <li>• 500 Gal. Century Sprayer</li> <li>• Weaverline Cart, 30 Bushel</li> <li>• Tye No-Till Drill</li> <li>• JD FB-B 17 DD Drill</li> <li>• JD 8300 Drill—Soybean Special!</li> <li>• Farmaster Tumble Mixer</li> <li>• Zimmerman Trailer, 18,000 GVW, Like New — \$3,500!</li> </ul> |
| <p><b>HARVESTING EQUIPMENT</b></p> <ul style="list-style-type: none"> <li>• Hesston 2000-150 Harvester</li> <li>• Hesston 2000-100 Harvester</li> <li>• Hesston 7020 Harvester</li> <li>• Int. 650 Harvester</li> <li>• Massey 260 Harvester</li> <li>• NI 843 Cornhead</li> <li>• NI 717 Combine</li> <li>• NI Unisystem, 702 Diesel, 710 Combine &amp; 760 Harvester</li> <li>• NI 744N 4-Row Head</li> <li>• NI 705 Uni-System</li> <li>• NI 709 Uni-System</li> <li>• NI 315 Sheller</li> <li>• NI 324 Sheller</li> <li>• NI 727 Husking Bed</li> <li>• NI 737 Husking Bed</li> <li>• NI 838 Husking Bed</li> <li>• NI 767 Super Chopper</li> <li>• NI 323 1-Row Corn-picker</li> <li>• NI 325 12 Row Husking Bed</li> <li>• Int. 234 Picker</li> <li>• IH 120 Forage Box</li> <li>• Badger Forage Box, Only \$1,200!</li> <li>• IH 830 Harvester</li> <li>• JD 3800 Harvester</li> </ul> | <p><b>TILLAGE</b></p> <ul style="list-style-type: none"> <li>• Int. 2-Bot. Trailer Plow</li> <li>• Ford 5-Bottom Plow</li> <li>• Int. 6500 11-Tooth Soil Saver</li> <li>• Int. 475, 17 1/2 Ft. Disk</li> <li>• Case IH 6500 9-Tooth Soil Saver</li> <li>• Int. Cultimulcher</li> <li>• Case Soil Saver — 7 Tooth</li> <li>• Case 16" Reset Plow, 6 Bottom</li> <li>• Case Model 500 6-Bottom, 20" Plow</li> <li>• Case Disc Harrow, 10'</li> <li>• JD 210 Disk</li> <li>• Kawanee 10 Ft. Disk</li> <li>• Oliver Disk</li> <li>• Used Cultipacker</li> <li>• Bush Hog 15 Ft. Disk</li> </ul>   |  |



DEPARTMENT 002  
 4924 EAST HARRISBURG PIKE  
 MIDDLETOWN, PA 17057

DIRECTIONS TO OUR MIDDLETOWN STORE- On your road map, we are on Route 230 mid way between Middletown & Elizabethtown Take the Toll House Rd. exit off Rt. 283, turn and go to stop at Rt. 230, go east on 230 1-1/2 mi. on the right

OPEN — MON. THRU SAT. 9-6  
 CLOSED SUNDAY

**TRAILERS "Big & Little"**

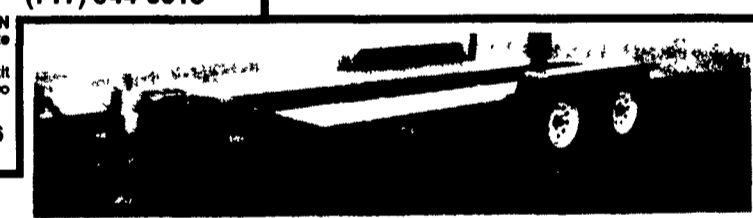


CLASS III HITCH RECEIVER  
 10,000 LB. MGTWR. In Stock For Most Domestic & Import Pickup Trucks & Vans.  
**\$79.95** FOR MOST POPULAR FORD CHEV & DODGE PICKUPS  
 OTHER APPLICATIONS UP TO \$99.95

"FREE CATALOG" CALL OR WRITE OUR MIDDLETOWN LOCATION FOR CATALOG & MAIL ORDER CALL (717) 944-0318

**2ND STORE LOCATION**

ON ROUTES 22-322 ACROSS FROM CLARKS FERRY TRUCK STOP AT DUNCANNON PA. PHONE (717) 834-9592 - OPEN MON. - FRI. 9-5, SAT. 9-3, CLOSED SUNDAY.



16' CAR HAULER OR WOODEN DECK UTILITY-STANDARD FEATURES INCLUDE ALL WHEEL ELECTRIC BRAKES, SPARE TIRE, SAFETY CHAINS & BREAK AWAY KIT, REMOVEABLE FENDERS, TONGUE JACK & CASTER STARTING AT \$1459  
 4x8, 5x10, 6x12 UTILITY TRAILERS \$459 & UP  
 3-AXLE, 9-TON, DECK OVER WHEELS \$2999  
 "DETAILS IN OUR FREE CATALOG"  
**TRAILER PARTS - LIGHTS, CHAINS HANGER KITS, WIRE HARNESS, ETC., ETC.**

**PERFORMANCE, STEREO & ACCESSORIES**

- Holley
- Zoom
- SB CHEV \$99.00
- SB CHEV ROLLER CHAIN SET \$19.99
- "NEW" #1850 \$134.95
- "QUALITY" AM-FM CASS. IN DASH STEREO \$29.95
- "IN STORE SPECIALS" ALSO SPEAKERS & EQS

**AUTOBODY PARTS, PAINTS & SUPPLIES**

- \* 73-79 CHEV, FORD TK FENDERS \$39.95 - \$49.95
- \* BODY FILLER CASE OF 4-GAL. \$33.95
- \* ACRYLIC ENAMEL PAINT LOW AS \$28.95
- \* URETHANE HARDENER DOES A GAL. \$12.95
- \* SANDPAPER-6" DA SELF ADHESIVE, 100 PER ROLL LOW AS \$15.99, ALSO DRY BACK DA, WET & DRY SHEETS, LONG FILE!
- 100s OF OTHER ITEMS AT BIG SAVINGS!!  
**WE UPS DAILY!!!**

**SAND BLASTER AND CABINETS**

- 125 Lb. Pressure Blaster ..... \$259
- 325 Lb. .... \$499
- 4 Ft. Wide Bead Blast Cabinet w/Vac. .... \$669
- 6 Ft. Wide Door On Both Ends & Dual Gloves ..... \$999
- AIR COMPRESSORS 5 HO, ASME CODED TANKS, FROM \$499 TO \$1199  
 7 1/2 HP 80 GAL TANK, SINGLE PHASE MOTOR \$1,299  
 ALL UNITS COME WITH MAG-STARTER MOUNTED & WIRED IF REQUIRED

**"RESTORED & REPRODUCTION" OLD GAS PUMPS AND PARTS**

Great For The Den Or Garage, Very Colorful, Guaranteed Conversation Piece, Short Ones — Tall Ones, We Even Have One Turned Into An Authentic Slot Machine!  
 Also - Globes, Signs & Parts To Restore Your Own, Call And Ask For Pump Catalog  
**We Buy Old Pumps & Other Gas Station Relics!!!!**  
 IF YOU HAVE AN OLD PUMP ON THE FARM YOU DON'T USE ANY LONGER GIVE US A CALL. IT CAN BE WORTH \$20 TO \$200

**Cedar Fence Posts In Stock**

**Excellent Used Equipment — Selling On Consignment — Call For Prices!**

- NI 802 Unisystem Tractor w/717 Uni Combine And More!
- NI 900 4-Row Corn Planter
- Hesston 4600T Baler w/4600BT Throwing
- Case 1816C Skid Loader w/Bucket And Fork
- NI 406 Hyd. Drive Hay Rake
- Farmhand 817 Feed Grinder
- NI 106 Spin Spreader
- 415 15-Ft. Packer Mulcher

**ZIMMERMAN'S FARM SERVICE**  
 1/2 Mile West Off Rt. 501 On School Rd., Bethel, Pa.  
 717-933-4114

