

Wool Promo Referendum Set

Robert E. Leiby
David L. Dunbar
 Lehigh Co. Agents

distribute ballots in early August. Completed ballots must be returned to the county office or postmarked by the August 30 deadline.

To be eligible to vote, a person must have owned sheep or lambs six months old or older for at least 30 consecutive days in 1990. A cooperative may vote on behalf of its members but, if it does so, its members are then ineligible to vote individually.

In the 1986 referendum, producers owning 67.8 percent of the sheep approved the program.

Building Maintenance And Housekeeping

Tidy, well-maintained farm buildings look better and are more pleasant and efficient places in which to work.

Even more important is reduced risk of falls, fire, and electrical shocks. Help protect your family, your co-workers and yourself by keeping buildings clean and in good repair.

- Have the proper tools and equipment needed to do a good job of maintaining and repairing farm buildings. Have a storage place for everything and put things away when you're finished using them.

- Keep buildings free of accumulations of trash, clutter, and other unneeded objects that get in your way and add to risks of fire and falls.

- Keep stairs and handrails in good repair.

- Make sure ladders are properly "set" and stable before climbing. Use both hands when climb-

ing. Carry tools in a holster and hoist paint, supplies, etc. Work carefully on ladders and don't overreach.

- Work carefully on roofs. Wear shoes that provide good footing. Use a lifeline. Stay clear of power lines.

- Repair damaged floor boards and broken spots on concrete floors and walks.

- Have ample building and yard lighting.

- Check electrical wiring and make needed repairs promptly. Don't overload circuits. Add new circuits to keep pace with increasing power needs. Include ground-

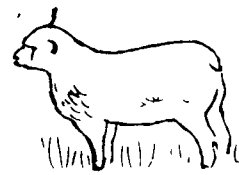
fault circuit interrupters (GFCI) for added protection.

- Install lightning protection systems on major buildings. Check them annually to assure proper grounding.

- Mount fire extinguishers in farm buildings as recommended by fire authorities or fire protection dealers.

- Store materials and supplies so they won't fall on or collapse under someone. Don't block passages.

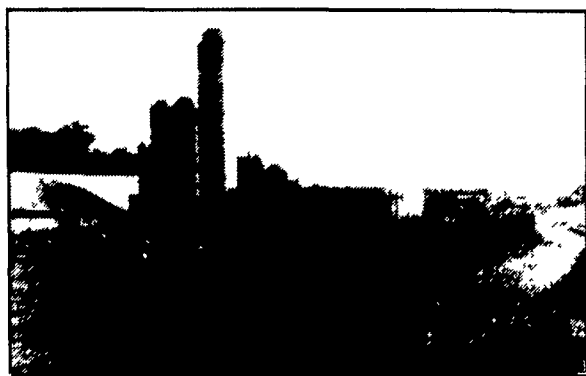
- Wear the appropriate personal protective equipment when doing maintenance work or cleaning up. Safety shoes, bump caps, gloves, goggles, and dust masks should be readily available and used.



Field demonstrations allow farmers to see competing equipment in action at Ag Progress Days. The event also features tours of research farms and conservation education areas.

POURED SOLID CONCRETE STORAGE SYSTEMS

17 Years Experience In Pouring Concrete Manure Pits!



Above-Ground Liquid Manure Tank For Dairy Operation - 235,000 Gal.



Hog House-Liquid Manure Pit



In-Ground Liquid Manure Tank For Hog Operation - 324,000 Gal.

Construction Of In-Ground Liquid Manure Tank- 425,000 Gallons.



CONCRETE PUMPING SERVICE AVAILABLE



Mixer And Boom Trucks



92' Boom Placing Concrete



Placing Concrete On Site

Take the questions out of your new construction. Call Balmer Bros. for quality engineered walls.

All sizes available round or rectangular

Invest in Quality - It will last a lifetime.



CONCRETE WORK, INC.

243 Miller Road Akron, PA 17501

(717) 733-0353 6:30 AM - 3:30 PM

(717) 859-2074 After 6:00 PM