

National Grain Market

St. Joseph, MO
July 31, 1991

WHEAT PRICES CLOSED MIXED WEDNESDAY. WEATHER UNCERTAINTY CONTINUED TO DICTATE CORN AND BEAN MARKETS AS PRICES REBOUND SHARPLY FROM YESTERDAY'S LOWS. WHEAT MIXED. CORN 4 TO 6 CENTS HIGHER. SORGHUM 9 TO 16 CENTS HIGHER. SOYBEANS 7 TO 17 CENTS HIGHER. STRENGTH IN WHEAT PRICES CAME FROM CONTINUED GOOD EXPORT DEMAND THIS WEEK AND LARGE SALE TO U.S.S.R. WEAKNESS IN WHEAT PRICES FOUND IN SOFT WHEAT AS SOVIETS BOUGHT HARD WHEAT EXCLUSIVELY, FOR THEIR NEEDS. CORN AND BEAN PRICES SOARED AS CHANCES FOR WEEKEND RAIN IN THE MIDWEST DIMINISH ON REVISED FORECAST OUTLOOK. SOYBEANS ENTERING MOISTURE-SENSITIVE POD SETTING AND FILLING STAGE.

EXPORT NEWS: THE U.S.S.R. BOUGHT 499,200 TONNES U.S. HARD RED WINTER WHEAT UNDER EXPORT BONUS FOR AUG/SEPT SHIPMENT.

DATE CHANGE YEAR AGO 07/31/91 07/30/91 08/01/90 WHEAT: KANSAS CITY 3.03-3.04 UP 1-NC 2.83-2.86 MINNEAPOLIS 3.00 1/4-3.04 1/4 DN 1/4 3.06 1/4-3.26 1/4 PORTLAND 3.38-3.42 DN 5-3 3.25-3.28 ST. LOUIS 2.75-2.78 UP 3-DN 1 2.73-2.83

CORN, U.S. NO. 2 YELLOW: KANSAS CITY 2.58-2.62 UP 5-6 2.62-2.67 MINNEAPOLIS 2.44 UP 5 1/4 2.57 1/2 SO. IOWA 2.53-2.56 1/2 UP 7-6 1/2 2.62-2.65 OMAHA 2.41-2.43 UP 4 2.50-2.53

SOYBEANS, NO. 1 YELLOW: KANSAS CITY 5.85-5.90 UP 10 5.99-6.01 MINNEAPOLIS 5.79 1/2 UP 17 1/2 5.85 1/2 SO. IOWA 5.82-5.89 UP 10-11 5.92-5.96 C. ILL. PROCESSORS 5.88 1/2-5.91 UP 11 1/4-7 3/4 5.98 1/2-6.11

*KANSAS CITY, US NO. 1 HARD RED WINTER WHEAT, ORDINARY PROTEIN. MINNEAPOLIS, US NO. 1 DARK NORTHERN SPRING WHEAT, 14% PROTEIN PORTLAND, NO. 1 SOFT WHITE WHEAT, ST. LOUIS, NO. 2 SOFT RED WINTER WHEAT.

FUTURES CLOSE: KANSAS CITY (SEP) WHEAT 2.95 3/4 UP 1 1/4 2.79 1/2 MINNEAPOLIS (SEP) WHEAT 2.82 1/4 DN 1/4 2.81 1/4 CHICAGO (SEP) WHEAT 2.94 UP 2 1/4 2.81 1/4 (SEP) CORN 2.58 UP 4 1/2 2.55 1/4 (DEC) CORN 2.63 1/4 UP 5 (AUG) SOYBEANS 5.83 UP 7 3/4 5.85 (SEP) SOYBEANS 5.90 UP 10

EXPORT: BARGE OR RAIL, PORT OF NEW ORLEANS OR NORTH TEXAS GULF. NO. 1 HARD RED WINTER WHEAT ORDINARY PROTEIN 3.34 UP 1 3.17-3.19 NO. 2 SOFT RED WINTER WHEAT 3.36-3.37 UP 2-1 3.03-3.04 NO. 2 YELLOW CORN 2.83-2.86 UP 5-6 2.81-2.82 NO. 2 YELLOW SORGHUM RAIL 4.84 UP 16 BARGE 5.00 UP 14 4.82-4.89 NO. 2 YELLOW SOYBEANS 6.16-6.19 UP 10-11 6.14-6.16.

Westminster Hay

Westminster, Md.

Tuesday, July 30, 1991

Report Supplied by Auction

TOTAL LOADS: 42.
ALFALFA: 2.00-3.40 BALE.
ALFALFA MX: 2.10-2.40 BALE.
TIMOTHY: 2.20 BALE.
TIMOTHY MX: 1.80-3.00 BALE.
GRASS: 1.40 BALE, 90.00 TON AND 19.00 EACH, ROUND BALES.
TIMOTHY ROUND BALES: 21.00 EACH.
STRAW: .80-1.60 BALE.
ORCHARD GRASS: 1.90-2.10 BALE.

Central U.S.

Carlot

Beef Report

August 1, 1991

Report supplied by USDA

CENTRAL U.S. CARLOT BEEF REPORT (INCLUDES THE MAJOR PRODUCTION AREAS IN THE MIDWEST AND TEXAS) AS OF 11:15 A.M.

COMPARED TO WEDNESDAY'S 3 00 P.M. REPORT COW AND BULL CARCASSES NOT TESTED BONELESS PROCESSING BEEF NOT TESTED

New England Shell

Eggs

August 1, 1991

NEW ENGLAND:

Prices were lower on all loose sizes, unchanged to lower on cartoned mediums, and unchanged on the balance. Trade sentiment was about steady to weak, steadiest on white large sizes. Demand was fair. Supplies were mixed from barely adequate on some heavy sizes to surplus on mediums, and smalls.

PRICES PAID TO PRODUCERS, CASES EXCHANGED, GRADE YIELD BASIS, BROWN EGGS LOOSE, AT FARM, CENTS PER DOZEN.

RANGE JUMBO 82-85 EXTRA LARGE 80-83 LARGE 76-79 MEDIUM 39-42 SMALL 17-20

BOSTON:

PRICES TO RETAILERS, SALES TO VOLUME BUYERS, USDA GRADE A AND GRADE A, BROWN EGGS IN CARTONS, DELIVERED STORE DOOR, CENTS PER DOZEN.

RANGE EXTRA LARGE 101-103 LARGE 98-100 MEDIUM 62-69

Green Dragon Hay

Ephrata, Pa.

Friday, July 26, 1991

Report Supplied by Auction

TOTAL LOADS: 76.
MIXED HAY: 60.00-147.00.
ALFALFA: 77.00-150.00.
TIMOTHY: 92.00-136.00.
STRAW: 50.00-85.00.
EAR CORN: 80.00-90.00.
RYE SEEDS: 2.50 BU.
OATS: 1.60 AND 2.40 BU.

Oklahoma City Feeder

Cattle

July 31, 1991

COMPARED TO LAST WEEK:

FEEDER CATTLE AND CALVES \$1.00-\$3.00 LOWER. DEMAND FAIR AT THE LOWER LEVELS. TRADE MODERATELY ACTIVE. OVERALL WEIGH CONDITION AND FLESH CONDITION OF FEEDERS LESS ATTRACTIVE TO BUYERS THAN LAST WEEK WITH MANY FLESHIER THAN NORMAL OR TAKING ON EXCESSIVE FILLS. CONTINUED SLAUGHTER STEER AND HEIFER PRICE DECLINES THE MAJOR FACTOR PUTTING DOWNWARD PRESSURE ON FEEDER COSTS. THE SEMI-ANNUAL CATTLE INVENTORY RELEASED MONDAY AFTERNOON CONSIDERED NEUTRAL. SLAUGHTER COWS AND BULLS CLOSED STEADY; AN EARLIER ADVANCE WAS ERASED ON THE CLOSING SESSION. RECEIPTS THIS WEEK 7,850; LAST WEEK 8,921; LAST YEAR 10,578. SUPPLY INCLUDES 71% YEARLINGS; 22% CALVES & STOCKERS UNDER 600 LB.; 7% COWS & BULLS. BULK PRICE RANGES FOLLOW:

FEEDER STEERS: MEDIUM AND LARGE FRAME 1, 300-400 LB. \$114.50-\$137.00; 400-500 LB. \$103.50-\$115.00; 500-550 LB. \$98.00-\$108.00; 550-600 LB. \$97.00-\$104.00; 600-650 LB. \$93.00-\$98.00; 650-700 LB. \$91.00-\$94.75; 700-750 LB. \$89.00-\$92.00; 750-800 LB.

\$86.75-\$91.00; 800-850 LB. \$83.50-\$87.75; 850-900 LB. \$83.00-\$85.50; 900-1000 LB. \$77.50-\$84.00. LARGE FRAME 2 HOLSTEINS, 250-375 LB. \$104.25-\$107.50; 400-450 LB. \$93.50-\$94.25; 700-800 LB. \$72.75-\$77.25; 900-925 LB. \$68.75-\$71.00.

FEEDER HEIFERS: MEDIUM AND LARGE FRAME 1, 275-400 LB. \$103.00-\$119.00; 400-500 LB. \$94.50-\$103.00; 500-550 LB. \$89.00-\$94.25; 550-600 LB. \$87.50-\$93.00, FLESHY \$85.75-\$88.00; 600-700 LB. \$84.00-\$92.25 BULK \$85.25-\$87.50; 700-800 LB. \$83.25-\$86.50, VERY FULL OR VERY FLESHY \$79.50-\$83.75; FEW 800-825 LB. \$81.50-\$83.50.

SLAUGHTER COWS: CLOSING SALES: CUTTER AND BONING UTILITY Y.G. 1-2 AVERAGE DRESSING \$48.50-\$51.00; HIGH DRESSING \$52.00-\$54.75; LOW DRESSING \$44.50-\$48.00. BREAKING UTILITY Y.G. 3-4 AVERAGE DRESSING \$48.00-\$49.75; HIGH DRESSING \$51.50-\$52.50; LOW DRESSING \$44.50-\$47.50.

SLAUGHTER BULLS: Y.G. 1 1100-2050 LB. (CLOSING PRICES) AVERAGE DRESSING \$61.50-\$62.75; HIGH DRESSING NONE; LOW DRESSING \$56.50-\$57.50. WEEKLY RANGE-AVE DRESSING \$61.50-\$66.50; HI DRESSING \$65.50-\$69.50; HI DRESSING/HI BONING \$69.50-\$72.50; LO DRESSING \$56.50-\$62.00.

HOSTETTER PORK



Wanted To Buy Crippled and Disabled Sows and Boars

Hogs Slaughtered For Federal Inspection
PHONE 717-274-7609

CHESTER COUNTY HAY SALE

"The fastest growing brokerage in Chester County"

Buying & Selling All Types Of Hay & Straw

Satisfaction Guaranteed

For more information on an "A" rated brokerage

Call JOHN PRIMUS
215-384-1069

1990 World Livestock Champion
Auctioneer Kenneth Wilcox will be appearing at the Thurs. Beef Sale Aug. 8 & Fri. Horse Sale Aug. 9. Outside BBQ Available Both Days From 12 Noon To 7 P.M.

NEW HOLLAND SALES STABLES INC. THE ACTION AUCTION

HORSE SALE
Fri., August 9 - 7:00 P.M.
Tack 6 P.M.
Horses Hitched 12 Noon

LIVESTOCK IS OUR ONLY BUSINESS

MONDAY

SLAUGHTER HOGS



EARLY BIRD HOG SALE
8:00 A.M.

Sell Your Hogs At New Holland Sales Stables, Inc. See them weighed, sold and pickup your check.

10:00 AM



HORSES
MULES

1:30 PM

BEEF SALE



SHEEP
GOATS

CALVES

WEDNESDAY

HEIFER SALE
11:00 AM

COW SALE 12:00 NOON



We have the usual run of 50 to 100 Heifers, all ages. Loads of fresh cows and springers from our regular shippers. Also some local fresh cows and springers.

1:30 P.M.

FEEDER PIG SALE



Pigs are accepted after 6:30 A.M. State graded from 8 to 12 Dairy Barn and Feeder Pig Barn are cleaned and disinfected weekly for your protection.

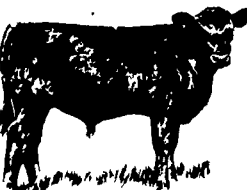
THURSDAY

Beef Auction
10:00 A.M.

BULLS
STEERS
BEEF COWS

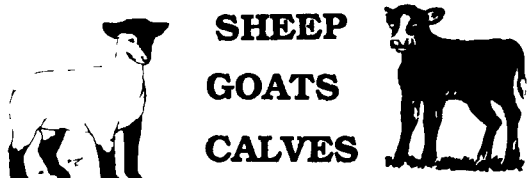


1:00 P.M.
STOCKERS
&
FEEDERS



12:30 P.M.

SHEEP
GOATS
CALVES



NEW HOLLAND SALES STABLES, INC.

12 Miles East of Lancaster Off Route 23, New Holland, Penna.

MANAGERS

Norman & David Kolb - 717-397-5538

Field Representatives

Luke Eberly - 215-267-6608 738-1865
Homer Eberly - 215-267-3047
Ron Ranck - 717-656-9849

Sale Barn Office Manager
Roger Floyd - 717-354-4341
FAX # 717-355-0706

Order Buyer
Paul Good - 215-445-6662