



Hog Markets

Peoria Hogs

Peoria, IL
August 1, 1991

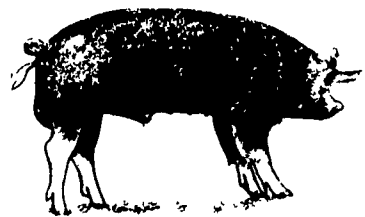
HOGS: 1000 TRADING MODERATE. BARROWS AND GILTS STEADY COMPARED WITH WEDNESDAY. SUPPLY MAINLY US 1-3 230-260 LBS. US 1-3 220-250 LBS. 55.00-55.50 2-3 230-260 LBS. 55.00-55.50 260-280 LBS. 53.00-55.00
SOWS: MOSTLY STEADY 14%
US 1-3 325-650 LBS. 43.00-44.
BOARS: OVER 350 LBS. 40.00-40.50;
UNDER 350 LBS. 41.00-41.50
HOG 214
HC 55.50-56.00 HD 55.50-56.00 HE 55.50-56.00 HI 55.50-56.00 HJ 55.50-56.00 HK 55.50-56.00 HQ 55.00-55.50 HR 54.00-55.00 VV 43.00-44.00 WW 43.00-44.00 XX 43.00-44.00 YY 43.00-44.00 ZZ 40.00-40.50

Indiana Hogs

August 1, 1991

HOGS 51.
BARROWS AND GILTS: UNEVENLY STEADY, SOME DEMAND LIGHT TO MODERATE. WEAK TO .50 LOWER; PLANTS STEADY TO MOSTLY .50 LOWER. COUNTRY: PLANTS: US 1-2 220-260 LBS. 53.50-55.00, 54.00-55.50 FEW 55.50. 210-220 LBS. 51.50-53.00 US 1-3 220-260 LBS. 52.50-54.00
SOWS: STEADY.
US 1-3 300-500 LBS. 37.00-41.00
500-650 LBS. 39.00-42.00
**INDIANA DIRECT RECEIPTS:
WEDNESDAY'S ACTUAL 19,400
TODAYS ESTIMATE 19,500 THURSDAY WEEK AGO 21,300 THURSDAY YEAR AGO 15,500 WEEK TO DATE 82,300 SM PD WEEK AGO 80,100 SM PD YEAR AGO 63,100
**RECEIPTS FOR A YEAR AGO WILL NOT COMPARE TO THIS WEEK DUE TO A CHANGE IN THE REPORTING BASE.

CARCASS BASIS HOG PRICES: HOT WEIGHTS: PLANT DELIVERED. 160-185 LBS. BARROWS AND GILTS: STEADY TO MOSTLY .67 LOWER.
US 1 (BACKFAT THICKNESS .50-.79 IN.) 77.13 TO 81.00. US 1' (BACKFAT THICKNESS .80-.99 IN.) 75.83 TO 77.13 US 2 (BACKFAT THICKNESS 1.00-1.24 IN.) 74.25 TO 76.00 US 3 (BACKFAT THICKNESS 1.25-1.49 IN.) 73.25 TO 75.50 US 4 (BACKFAT THICKNESS 1.50-1.79 IN.) 70.93 TO 73.25
ACTUAL PAYING PRICE MAY NOT ALWAYS BE WITHIN PRICE RANGES AS ADJUSTMENTS ARE MADE FOR SUPERIOR OR INFERIOR MUSCLING AND BACKFAT THICKNESS WITHIN THE GRADES.



New Holland Feeder Pigs

July 31, 1991

TODAY 1010
LAST WEDNESDAY 614
LAST YEAR 862
TREND: Compared to last Wednesday feeder pigs 3.00-6.00 higher, extremes 14.00 higher. All pigs weighed on arrival and sold by the hundred weight.
GRADE HEAD WEIGHT PRICE US 1-2 31 30-39 116.00-130.00. 196 40-49 104.00-116.00. 68 50-59 80.00-92.00. 74 60-69 78.00-82.00. 13 75-85 74.00-78.00.
US 2 8 27 100.00. 72 30-39 105.00-119.00. 105 40-49 86.00-100.00. 58 50-59 72.00-82.00. 39 60-65 75.00-78.00. 36 70-75 69.00-72.00
US 2-3 66 30-39 100.00-102.00. 29 40-49 70.00-82.00. 22 50-59 72.00-76.00. 18 65-75 67.00-72.00.

Lancaster Hogs

Lancaster Stockyards
Sat., July 27, 1991
Report supplied by auction
370 HEAD.
US 1 215-245 LBS. 57.00-58.35.
US 1-2 215-245 LBS. 55.00-56.00.
US 1-3 215-245 LBS. 54.00-55.00.
US 2-4 215-245 LBS. 53.00-54.00.
GOOD SOWS: 40.00-43.00.
MEDIUM SOWS: 35.00-40.00.
THIN SOWS: 30.00-35.00.
BOARS (ALL WEIGHTS): 35.00-38.00.

New Holland Hog Auction

Lancaster, Pa.
Monday, July 29, 1991
Hog Receipts:
Today 722
Last Monday 730
Last Year 786
TREND: Compared with last Monday barrows and gilts steady.
BARROWS AND GILTS: US 1-2 190-210 lb 57.50.
US 1 220-230 lb 56.50-59.00.
US 1-3 240-250 lb 54.75-55.50.

State Graded Feeder Pig Sale

at Carlisle Livestock Auction
Friday, July 26, 1991
RESULTS ON 1,592 PIGS.
TREND: PIGS WERE 20.00 LOWER. ALL PIGS WERE WEIGHED ON ARRIVAL AND SOLD BY THE HUNDRED WEIGHT.
US NO. 1&2'S 857 HD. 505 HD. 36-49 LB. 71.00-85.00, 270 HD. 50-59 LB. 70.00-82.00, 82 HD. 62-77 LB. 68.00-77.50.
US NO. 2'S 500 HD. 99 HD. 17-39 LB. 51.00-66.00, 210 HD. 40-49 LB. 52.00-73.00, 20 HD. W/TAIL 50-54 LB. 48.00-59.00, 109 HD. 50-59 LB. 61.00-76.00, 12 HD. 64-69 LB. 57.00-60.00, 19 HD. 74-100 LB. 41.00-62.00.
US NO. 2&3'S 154 HD. 154 HD. 24-69 LB. 40.00-55.00 (SMALL LOTS).
NEXT STATE GRADED FEEDER PIG SALE, FRIDAY, AUGUST 9 & 23, 1991, SALE 1:30 P.M. GRADING 7:30 UNTIL 11:30 A.M.



Hay & Grain Markets

Pa. Grain

July 29, 1991
Report supplied by PDA
COMPARED WITH LAST MONDAY'S MARKET FOR SOUTHEASTERN, CENTRAL, AND SOUTH CENTRAL PA: CORN STEADY TO .07 HIGHER, SPOTS .12 HIGHER; WHEAT STEADY TO .08 HIGHER; BARLEY STEADY TO STRONG, SPOTS .04 HIGHER; OATS STEADY TO .05 HIGHER; SOYBEANS STEADY TO .30 HIGHER; EAR CORN STEADY TO 1.00 HIGHER.
SOUTHEASTERN PENNSYLVANIA
CORN NO. 2-Y RANGE 2.50-2.85, FEW REPORTED 2.99, AVERAGE 2.76, *CONTRACT FOR HARVEST 2.60-2.80; @WHEAT NO. 2 RANGE 2.50-2.90, FEW REPORTED 3.00, AVERAGE 2.77; BARLEY NO. 3 RANGE 1.40-1.80, AVERAGE 1.63; OATS NO. 2 RANGE 1.10-1.45, AVERAGE 1.33; SOYBEANS NO. 1 RANGE 5.48-5.75, AVERAGE 5.58; *CONTRACT FOR HARVEST 5.48-5.66; FEW REPORTED GR. SORGHUM #2 *CONTRACT FOR HARVEST 2.25; *+BUCKWHEAT *CONTRACT FOR HARVEST 8.15; EAR CORN RANGE 70.00-85.00, AVERAGE 77.39.

SOUTH CENTRAL PENNSYLVANIA

CORN NO. 2-Y RANGE 2.60-2.90, AVERAGE 2.71; @WHEAT NO. 2 RANGE 2.33-2.70, AVERAGE 2.51; BARLEY NO. 3 RANGE 1.40-1.70, AVERAGE 1.53; OATS NO. 2 RANGE 1.00-1.25, FEW REPORTED 1.35, AVERAGE 1.22; *SOYBEANS NO. 1 RANGE 5.50, AVERAGE 5.50; EAR CORN RANGE 70.00-80.00, AVERAGE 73.00.

SOUTHEASTERN, CENTRAL & SOUTH CENTRAL SUMMARY

CORN NO. 2-Y RANGE 2.50-2.85, AVERAGE 2.74; @ WHEAT NO. 2 RANGE 2.50-2.90, AVERAGE 2.70; BARLEY NO. 3 RANGE 1.40-1.70, AVERAGE 1.59; OATS NO. 2 RANGE 1.10-1.45, AVERAGE 1.28; SOYBEANS NO. 1 RANGE 5.30-5.75, AVERAGE 5.53; EAR CORN RANGE 70.00-85.00, AVERAGE 75.17.
CENTRAL PENNSYLVANIA
CORN NO. 2-Y RANGE 2.60-2.80, FEW REPORTED 2.93, AVERAGE 2.74; @WHEAT NO. 2 RANGE 2.50-2.90, AVERAGE 2.68; BARLEY NO. 3 RANGE 1.50-1.70, AVERAGE 1.57; OATS NO. 2 RANGE 1.10-1.45, AVERAGE 1.26; SOYBEANS NO. 1 RANGE 5.30-5.60, AVERAGE 5.47; EAR CORN RANGE 70.00-75.00, AVERAGE 72.17.

WESTERN PENNSYLVANIA

CORN NO. 2-Y RANGE 2.45-2.80, AVERAGE 2.59; @WHEAT NO. 2 RANGE 2.25-2.70, AVERAGE 2.52; BARLEY NO. 3 RANGE 1.55-1.60, AVERAGE 1.58; OATS NO. 2 RANGE 1.00-1.60, AVERAGE 1.34; SOYBEANS NO. 1 RANGE 5.55, AVERAGE 5.55; EAR CORN RANGE 55.00-66.00, AVERAGE 60.50.



A LESSON WELL LEARNED... LANCASTER FARMING'S CLASSIFIED ADS GET RESULTS!

PIGS

STATE GRADED SALE
FRI., AUG. 9
1:30 P.M.
AT
Carlisle
LIVESTOCK MARKET, INC.
Exit 12 Off I-81
(717) 249-4511 or
Evening Jim, 249-2359

MONTH AGO
CORN NO. 2-Y 2.66; @WHEAT NO. #2 3.05; BARLEY NO. 3 1.56; OATS NO. 2 1.28; SOYBEANS NO. 1 5.28; EAR CORN 74.48.

YEAR AGO
CORN NO. 2-Y 3.21; @WHEAT NO. #2 3.05; BARLEY NO. 3 2.11; OATS NO. 2 1.32; SOYBEANS NO. 1 5.83; EAR CORN 90.29.

Diffenbach Auction Center

New Holland, Pa.
Monday, July 29, 1991
Report Supplied by Auction
TOTAL LOADS: 78.
ALFALFA: 77.00-167.00.
MIXED HAY: 50.00-122.00.
TIMOTHY: 82.00-132.00.
ORCHARD GRASS: 80.00-130.00.
STRAW: 60.00-82.00.
EAR CORN: 85.00-92.00.
OATS: 1.25-1.90.

This sale was formerly held at the New Holland Sales Stables. It is now held at Diffenbach's New Holland Auction Center Ltd., 100 W. Jackson St., New Holland, across from the prior sale location. Auction time is 10:00 a.m. Monday.

Leinbach's Hay

Shippensburg, PA
July 27 and 30
Report Supplied by Auction
TOTAL LOADS: 52.
ALFALFA: 95.00-160.00.
MIXED HAY: 59.00-110.00.
TIMOTHY: 60.00-110.00.
BROME GRASS: 63.00-101.00.
ORCHARD GRASS: 45.00-90.00.
STRAW: 45.00-51.00.
EAR CORN: 90.00-100.00.
MULCH HAY: 31.00-52.00.

Kirkwood Hay Auction

Kirkwood, Pa.
Tuesday, July 30, 1991
Report Supplied by Auction
31 LOADS OF HAY.
MIXED HAY: FIRST CUTTING 49.00-111.00, 2ND CUTTING 79.00.
TIMOTHY: 77.00-120.00.
ALFALFA: 2ND CUTTING 100.00-126.00, 3RD CUTTING 90.00.
GRASS: 82.00-108.00.
WHEAT STRAW: 68.00-90.00.
EAR CORN: 86.00-88.00.

North Jersey Market

Hackettstown, N.J.
Tuesday, July 30, 1991
Hay-Straw & Grain Report
ALFALFA HAY: 2 LOADS, 2.10 AND 2.75 BALE.
MIXED HAY: 2 LOADS, 1.50 AND 1.60 BALE.
GRASS HAY: 2 LOADS, 1.40 AND 1.90 BALE.
WHEAT STRAW: 1 LOAD, 1.50 BALE.
TOTAL: 7 LOADS.

Regional Hay

July 29, 1991
Eastern, Pa.
HAY & STRAW MARKET FOR EASTERN PA - (ALL HAY NO. 2 AND BETTER, PRICES PAID BY DEALERS AT THE FARM & PER TON). HAY & STRAW MOSTLY STEADY.
ALFALFA 70.00-110.00, FEW 120.00; MIXED HAY 70.00-100.00, FEW 110.00; TIMOTHY HAY 60.00-85.00, FEW 110.00; STRAW 45.00-75.00; MULCH 20.00-45.00.

SUMMARY OF LANCASTER CO. HAY AUCTIONS FOR WEEK ENDING 7/26/91. PRICES PER TON: LOADS: 155 HAY, 34 STRAW, AND 45 EAR CORN. ALFALFA 90.00-130.00, FEW 165.00; MIXED HAY 80.00-127.00; TIMOTHY HAY 85.00-136.00; STRAW 52.00-78.00; EAR CORN 78.00-94.00.

SUMMARY OF CENTRAL PA. HAY AUCTIONS FOR WEEK ENDING 7/19/91. PRICES PER TON: LOADS: 113 HAY, 5 STRAW & 18 EAR CORN. ALFALFA 100.00-161.00; MIXED HAY 80.00-130.00; TIMOTHY HAY FEW 85.00-137.00; STRAW FEW 60.00-75.00; EAR CORN 95.00-115.00.

Keister's Hay

Middleburg, PA
Tuesday, July 30
Report supplied by auction
ALFALFA: 110.00-185.50.
MIXED HAY: 75.00-180.00.
STRAW: 67.50-85.00.
EAR CORN: 82.50-115.00.
RYE: 4.20 BU.
OATS: 1.90-2.50 BU.

Good's Hay

Leola, Pa.
Wed., July 31, 1991
Report Supplied by Auction
70 LOADS.
ALFALFA: 90.00-130.00.
MIXED HAY: 64.00-158.00.
TIMOTHY: 90.00-134.00.
STRAW: 59.00-92.00.
CORN: 80.00-90.00.
GRASS: 80.00.

Belleville Hay

Belleville, PA
Wednesday, July 31
Report Supplied by Auction
TOTAL LOADS: 39 LBS. HAY.
ALFALFA: 92.50-130.00.
MIXED HAY: 45.00-97.50.
STRAW: 82.50.
EAR CORN: 87.50-92.50.
OATS: 2 LOADS, 1.80 AND 1.90 BU.

Dewart Hay

Dewart, PA.
Monday, July 29, 1991
Report Supplied by Auction
5 LOADS OF HAY, 70.00-151.00.
STRAW: 3 LOADS, 75.00-89.00.
CORN: 6 LOADS, 70.00-85.00.

In this issue

Four Sections

FEATURES

Canola Crop.....C14
Cattlemen Tour.....A22
Lebanon Fair Sheep.....A20
Lebanon Fair Dairy.....A32
Lebanon Fair Hogs.....C 8

HOME AND YOUTH

Homestead Notes.....B 2
Farm Women Societies.....B12
Home On The Range.....B 6
Cook's Question Corner.....B 8
Kid's Korner.....B10
4-H Happenings.....B19

DAIRY

DHIA Focus.....A24
York 4-H Show.....C12
York Holstein Show.....A30
Somerset Holstein Show.....D 3
Maryland Holstein Show.....D 2
Chester 4-H Show.....A30
Kimberton Dairy Show.....D 7
New York Distinction.....A25

COLUMNS

Now is the Time.....A10
Have You Heard.....B 9
Ida's Notebook.....B13
On Being A Farm Wife.....B 4
Farm Management.....A38
Drought Watch.....C 3
Poultry Pointers.....C 2
Swine Management.....B22

DEPARTMENTS

Editorial.....A10
Farm Calendar.....A10
Farm Forum.....A10
Mailbox Markets.....B20
Sale Reports.....B26
Public Auction Register.....B30
Business News.....C 6
Classified Ads.....C15

Walter M. Dunlap and Sons offers all cattle feeders two marketing days - Give us a call for advice and marketing conditions.

MONDAYS OR WEDNESDAYS

Consign With Us - For The Marketing Edge

Consign Your Beef Cows
Mondays and Wednesdays

No Waiting To Unload - Good Weight Conditions

Next Graded Feeder Cattle Sale
Friday, August 16 - 11:00 A.M.

Walter M. Dunlap and Sons

Lancaster Stockyards

Tel. (717) 397-5136

An Old Line Commission Firm Keeping
Abreast With The Times