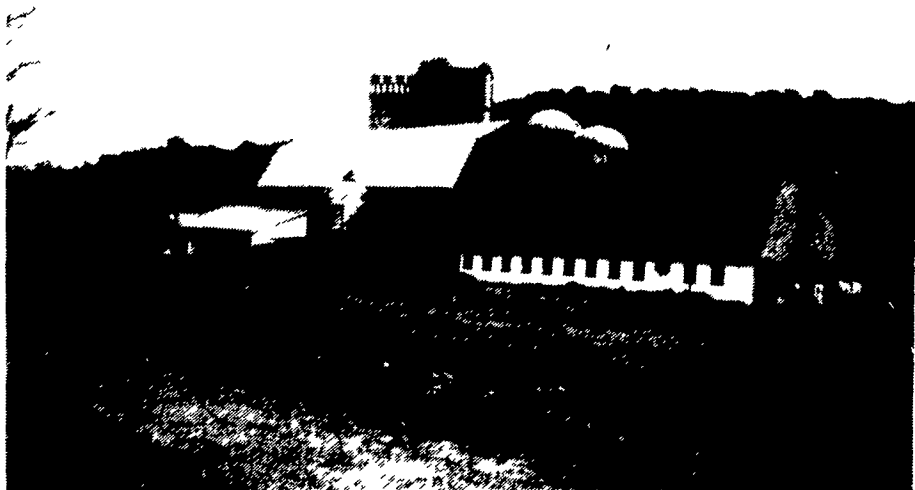


# Susquehanna County



For twenty years, Roy and Louise Noble, Springville, in Susquehanna County have milked cows. But their operation is unique in that they purchase everything from feed to replacements. They milk 140 Holsteins and farm 90 acres.



The registered Holstein dairy farm of Peasedale is located east of New Milford in Susquehanna County. The Peases have a partnership with Dad Donald and Sons, Mark and Lloyd. They milk 80 cows and have a total of 160 dairy animals in their herd. The average milk production is 21,500 and they have six cows classified excellent and 30 very good. They are well known for their show cows and have exported animals and embryos through the Pennsylvania Holstein Association to China, Japan and France.

Willi and Lill Reuss with their son Kevin farm 232 acres in Susquehanna County near Harford. They have 59 Holsteins on the farm that has been in the family for 25 years. The Reusses credit their German background as the reason they like to keep things clean and neat around their farm.

## Want to increase production, butterfat and profits?

Here's what farmers are saying about Fertrell's Rumi-cult 40, a bacterial aid fortified with electrolytes, vitamins, amino acids, and blood builders specially formulated for high producing cows under stress.

"Previous digestive problems are what prompted us to try Fertrell's Rumi-cult. The rumi-cult solved the problems! We then joined the Fertrell feeding program and have had no serious vet problems since. This program has been more profitable than any other we've been on."

Max Reapsome  
Loysville, PA

"We starting using Fertrell's Rumi-Cult 40 in June of 1987 and have been very happy with the results. Their knowledge about nutrition has helped us immensely. I appreciate the honest straightforward approach to helping us increase and maintain our butterfat. We place a great deal of trust in the knowledge of their nutritionist Dave Mattocks."

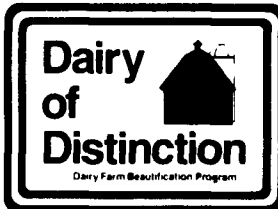
Ron Wood  
Gor-Wood-D Holsteins  
Mansfield, PA



**Congratulations Dairy of Distinction Winners**



Box 265, Bainbridge, PA 17502  
(717) 367-1566



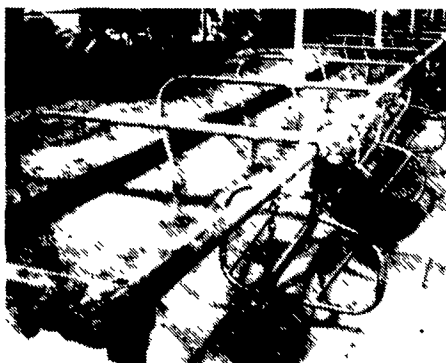
**Congratulations DAIRY of DISTINCTION AWARD WINNERS**

**See Us For All Your Dairy Care Needs**

### OUR SPECIALITIES

Tie-Stalls (all kinds)  
Free Stalls (all kinds)  
Lever Rows  
(Self Locking and Manual—  
Gates (Custom made)

Paneling and Pens  
Gutter Grates  
Water Bowls  
Columns  
Energy-Free Drinkers



SHOW-EASE CUSTOM 6 STALL



SHOW-EASE REGULAR STALL

• We custom make to fit your barn. Call for a dealer in your area.

**DID YOU KNOW?**

We have many equipment bargains resulting from our Badger rental and leasing business. Stop in and ask us about them today!

*Show-Ease Stall Co.*

**JOHN E. KREIDER**  
573 Willow Road, Lancaster, Pa. 17601  
PHONE: (717) 299-2536

