

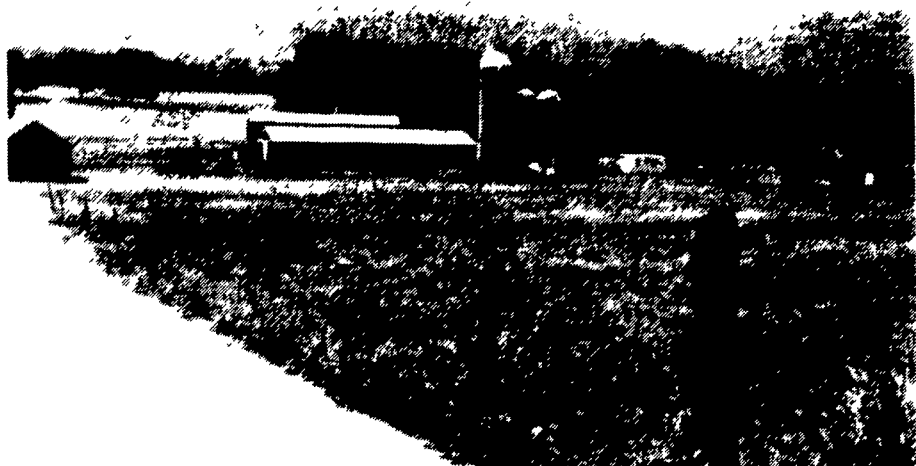
Centre County



With many dairy farms going out of business because of the milk prices, this farm stands alone. But not because of the milk prices, but because it truly is the only operating dairy farm in the borough, according to Lewis E. Corman, who operates Park Road Farms in Millhelm, Centre Co. They milk a total of 49 cows with 38 replacement helpers and calves. Milking is from a tiestall to a pipeline at 5 a.m. and 5 p.m. Corman said he raises most of the crops needed, and purchases some shelled corn and a couple loads of hay every year. The farm, operated by Lewis and son Lewis E. Corman III, 18, has been in the family since 1906.



The cows enjoy listening to ball games while the radio plays, said Todd Ishler. Ja-Lene Farm, in Spring Mills, Centre Co., is operated by Ishler and wife Virginia. They milk 75 head of registered Holstein and maintain about 85 young stock. The milking, at 5:15 a.m. and 4:15 p.m., is from a tiestall to a milking pipeline for a total herd average of 22,000 pounds. The preferred feed is the high moisture corn and haylage. The farm has been in the family 23 years.



Franlo-Alken Farm in Bellefonte is operated by Frank Nolan with wife Sharlene. They milk about 46 head of Holstein from a tiestall with milking pipeline. The Nolans also maintain about 50 young stock. The herd average is 21,300 pounds of milk. The farm has been in the family for 40 years. Nolan farms about 250 tillable acres, and grows corn, oats, soybean, and alfalfa for the herd. The remainder of corn not used is sold in the open market.

Hershey Foods

the name you know,
the quality you trust.

HERSHEY'S

Reese's

Peter Paul

Cadbury's



LUDEN'S

San Giorgio

SKINNER

Light 'n' Fluffy

Delmonico



RONZONI

