

**Greencastle Livestock**

Greencastle, Pa.  
Monday, July 29, 1991

TOTAL CATTLE 698.  
SLAUGHTER CATTLE RECEIPTS: 606 HD. SLAUGHTER STEERS: 207 HD. TREND: 1.00-2.00 LOWER. HIGH CHOICE & PRIME 2-4 71.50-73.50; CHOICE 2-3 950-1075 LBS. 69.00-71.00; CHOICE 2-3 1075-1375 LBS. 69.00-72.00; CHOICE 2-3 OVER 1375 LBS. 66.00-70.00; CHOICE 4 ALL WEIGHTS 65.00-69.00; SELECT & CHOICE 1-2 950-1100 LBS. 65.00-70.00; SELECT & CHOICE 1-2 1100-1375 LBS. 63.00-68.00; SELECT & CHOICE 1-2 OVER 1375 LBS. 62.00-66.00.  
HOLSTEINS: CHOICE 2-3 1050-1450 LBS. 62.00-65.50; SELECT 1-2 1050-1450 LBS. 57.00-61.00.  
SLAUGHTER HEIFERS: 78 HD. TREND: 1.00-2.00 LOWER. CHOICE 2-3 850-1000 LBS. 65.00-70.00; CHOICE 2-3 1000-1250 LBS. 66.00-71.50; CHOICE 4 ALL WEIGHTS 64.00-68.50; SELECT & CHOICE 1-2 850-1000 LBS. 63.00-68.00; SELECT & CHOICE 1-2 1000-1250 LBS. 63.00-67.00.  
HOLSTEINS: CHOICE 2-3 1000-1350 LBS. 59.00-63.75; SELECT & CHOICE 1-2 1000-1350 LBS. 55.00-58.00.  
SLAUGHTER BULLS: 26 HD. TREND: STEADY. YIELD GRADE 1 ALL WEIGHTS 63.00-72.00, FEWER 74.75; YIELD GRADE 2 ALL WEIGHTS 57.00-62.50.  
BULLOCKS: 5 HD. SELECT 1-3 1150 TO 1375 LBS. 63.00-66.50; SELECT 1-2 950 TO 1250 LBS. 64.00-68.75.  
COWS: 290 HD. TREND: STEADY. BREAKING UTILITY & COMMERCIAL 50.00, TO 55.50; CUTTER & BONING UTILITY 50.00 TO 55.00; CANNER & LOW CUTTER 49.50-DOWN.  
STOCKER & FEEDER CATTLE RECEIPTS: 92 HD. TREND: STEADY TO WEAKER. BEEF TYPES: 200-400 LBS. STEERS 90.00-109.00, BULLS 85.00-109.00, HEIFERS 80.00-100.00; 400-600 LBS. STEERS 75.00-91.00, BULLS 70.00-90.00, HEIFERS 75.00-84.00; 600-800 LB. STEERS 70.00-77.00, BULLS 60.00-69.00, HEIFERS 70.00-76.00; 800-975 LBS. STEERS 65.00-70.00, BULLS 57.00-64.00, HEIFERS 64.00-69.00.  
HOLSTEINS & DAIRY CROSS:

200-400 LBS. STEERS 80.00-94.00, BULLS 78.00-90.00, HEIFERS 80.00-105.00; 400-600 LBS. STEERS 70.00-80.00, BULLS 68.00-78.00, HEIFERS 68.00-79.00; 600-800 LBS. STEERS 60.00-71.00, BULLS 59.00-66.00, HEIFERS 60.00-72.00; 800-975 LBS. STEERS 60.00-65.00, BULLS 54.00-59.50, HEIFERS 55.00-61.00.  
CALVES: 735 HD. TREND: STEADY TO 5.00 LOWER. CHOICE 150-300 LBS. 80.00-109.00; GOOD 150-300 LBS. 75.00-88.00; GOOD 100-150 LBS. 70.00-80.00; GOOD 80-100 LBS. 65.00-71.00; STANDARD 80-100 LBS. 62.00-66.00; STANDARD 80 LBS. & DOWN 61.00-DOWN.  
CALVES RETURNING TO THE FARM: TREND: STEADY TO 5.00 LOWER. HOLSTEIN BULLS OVER 100 LBS. UP TO 175.00; UNDER 100 LBS. UP TO 170.00; HOLSTEIN HEIFERS OVER 100 LBS. UP TO 175.00; UNDER 100 LBS. UP TO 175.00; BEEF TYPE BULLS OVER TO 90 LBS. UP TO 175.00; BEEF TYPE HEIFERS OVER 90 LBS. UP TO 150.00.  
SHEEP & LAMBS: 89 HD. LAMBS: TREND: 3.00 TO 4.00 LOWER. CHOICE 80-100 LBS. 47.00-50.00; 100-120 LBS. 45.00-50.00; 120 & OVER LBS. 42.00-47.50; MEDIUM & GOOD ALL WEIGHTS 38.00-45.50; FEEDER LAMBS, 60 TO 85 LBS. 38.00-44.00; LIGHT LAMBS 48.00-52.00; CULL LAMBS 37.00 & DOWN.  
SHEEP: EWES LEAN 14.50-17.50; EWES FAT 11.00-14.00; YEARLINGS 20.00-29.00; BUCKS 12.00-15.50.  
GOATS: 59 HD. SMALL 15.00-24.00; MEDIUM 24.00-44.00; LARGE 45.00-90.00.  
HOGS, SOWS & BOARS: 131 HD. HOGS, BARROWS & GILTS: TREND: STEADY 1.00 HIGHER. 210-250 LBS. 52.75-55.00; 250-260 LBS. 52.00-54.00; 260-270 LBS. 50.00-52.00; 270-300 LBS. 47.00-50.00.  
LIGHT HOGS: 140-180 LBS. 40.00-43.00; 180-210 LBS. 42.00-46.50.  
SOWS: TREND: STEADY TO 2.00 HIGHER. GOOD SOWS UNDER 400 LBS. 41.50-44.50; GOOD SOWS OVER 400 LBS. 42.00-44.00; CULL SOWS ALL WEIGHTS 39.00-DOWN.  
BOARS: TREND: STEADY. 180-210 LBS. 36.00-41.00; 210-260 LBS. 38.00-42.00; 260-300 LBS. 35.00-37.00; 300 LBS. & OVER 36.00-37.50.

FEEDER PIGS: 987 HD: 20 TO 30 LBS. 55.00-80.00, 30 TO 40 LBS. 54.00-75.00, 40 TO 50 LBS. 50.00-75.00, 50 TO 60 LBS. 50.00-70.00; 60 LBS. & OVER 48.00-58.00.  
SALE EVERY MONDAY AT 2:00 P.M. & EVERY THURSDAY AT 1:00 P.M.  
HAY & STRAW SALE EVERY MONDAY & THURSDAY AT 11:30 A.M.  
SPECIAL FEEDER CATTLE SALE: FRIDAY, AUGUST 2, 1991 AT 7:15 P.M.  
SPECIAL FEEDER PIG SALE: SATURDAY, AUG 24, 1991 AT 1:00 P.M.

SHEEP 202...SPRING SLAUGHTER LAMBS...High Choice 90/97 lbs. spring lambs 56.00-57.50, Choice 80/91 lbs. 49.25-53.00. Good & Choice 55/80 lbs. feeder lambs 45.00-50.0, Good 38/50 lbs. 40.00-44.00. Slaughter sheep 14.00-20.00 - all Cwt.  
GOATS 27...Large 44.00-64.00, Medium 25.00-38.00, Small 13.00-23.00 --- all per head.

**Frederick Livestock Auction**

Frederick, Md.

Monday, July 29, 1991

Report Supplied by Auction  
SLAUGHTER COWS: 75 HEAD, STEADY PRICES. UTILITY 49.00-54.00; CANNERS 46.00-49.00; SHELLY 45.00 DOWN.  
BULLS: YG#1 1100-1600 LBS. 62.75-63.25; 1 LOW DRESSING 1735 LBS. AT 56.75.  
FED STEERS: NONE.  
FED HEIFERS: LOW DRESSING HOLSTEINS TO 54.75.  
VEAL CALVES: CHOICE 300 LBS. 101.00-106.00; GOOD 200-300 LBS. TO 95.00; CULLS 80-110 LBS. 70.00-79.00; 50-80 LBS. 62.00-70.00; WEAK/ROUGH 60.00 DOWN.  
FARM CALVES: HOLSTEIN BULLS 15.00-20.00 LOWER. #1 90-120 LBS. 140.00-167.00; #2 100.00-140.00; 75-85 LBS. 80.00-110.00; HOLSTEIN HEIFERS 85-125 LBS. 130.00-162.00; 75-80 LBS. 80.00-130.00; BEEF X BULLS TO 160.00; HEIFERS TO 150.00.  
BUTCHER HOGS: 1.00 LOWER. US#1-2 243 LBS. 54.50; 215-260 LBS. #1-3 53.00-54.00; 1 LOT 283 LBS. AT 50.00; 1 LOT 300 LBS. AT 45.00.  
SOWS: 500-650 LBS. 42.00-44.25.  
BOARS: NONE.  
STOCK CATTLE, STEERS: GOOD DEMAND, FEW OFFERED. 300-400 LBS. 99.00-104.00; 1 700 LB. AT 84.00.  
HEIFERS: 300-500 LBS. 80.00-91.00; 500-700 LBS. 70.00-80.00; 700-800 LBS. 67.00-77.00.  
BULLS: 1315 LB. AT 106.00; 600 LBS. 76.00-80.00; 700-750 LBS. 70.00-73.00; 1 1085 LB. AT 60.00.  
LAMBS: CHOICE SHORN 90 LBS. 49.00-50.00; BUCK LAMB 165 LBS. AT 35.00.  
SHEEP: 190-235 LBS. 10.00-160.00.  
GOATS: FEW OFFERED.  
PIGS AND SHOATS: SCARCE. BY THE HEAD, 10 HEAD 28 LBS. AT 25.00.

**Eighty-Four Livestock**

Eighty-Four, PA

July 29, 1991

CATTLE 216... PDA ...Compared with last Monday's market: Slaughter cows 2.00 to 3.00 lower. Select slaughter steers 65.00-68.00, few Standard 60.00-64.50. Few Select sl. heifers 64.00-67.00, Standard 58.00-62.00. Breaking Utility & Commercial sl. cows 47.00-52.00, few high yielding 52.50-54.00, Cutter & Boning Utility 46.00-50.00, Canner & Low Cutter 38.00-46.00, Shells down to 21.00. Yield Grade No. 1, 1050/1700 lbs. sl. bulls 60.00-67.00, No. 2, 900/1350 lbs. 52.00-58.00. Feeder Cattle: Medium & Large Frame No. 1, 200/350 lbs. steers 100.00-116.00, 450/700 lbs. 80.00-91.00, 700/900 lbs. 70.00-80.00. Medium & Large Frame No. 1, 300/500 lbs. heifers 74.00-90.00, few 220/240 lbs. 110.00-122.50. Medium Frame No. 1, 450/700 lbs. bulls 70.00-89.00, few 200 lbs. up to 106.00.  
CALVES 219...Couple Choice vealers 110.00-115.00, few Good 95.00-104.00, Standard & Good 90/120 lbs. 75.00-90.00, few 60/85 lbs. 65.00-78.00, Utility 45/60 lbs. 48.00-61.00. Farm Calves: Hol. Bulls #1, 90/125 lbs. 130.00-175.00, No. 2, 80/120 lbs. 100.00-140.00; No. 1, Holstein Heifers 90/145 lbs. 100.00-155.00. Beef cross 80/120 lbs. bulls and heifers 100.00-200.00.  
HOGS 114...Barrows and Gilts: 1.50 to 2.00 higher. US No. 1-2 220/255 lbs. barrows and gilts 54.00-54.85, 1-3 215/260 lbs. 53.00-54.10, 2-3 230/260 lbs. 52.10-53.00. US No. 1-3 325/550 lbs. sows 46.00-48.50, 2-3 320/600 lbs. 40.00-45.00. Few Boars 37.00-40.00.  
FEEDER PIGS 22...US No. 1-3 30/40 lbs. 23.00-39.00, lot No. 3, 25 lbs. 17.00 --- per head.

**Grantsville Livestock**

Grantsville, Maryland

Sat., July 27, 1991

HOGS: TOP BARROWS & GILTS 53.00-54.30, HEAVY BUTCHER 52.00-54.00, LIGHT BUTCHER 45.00-53.50, BUTCHER SOWS 38.50-46.50, FEEDER SHOATS 10.00-45.00.  
VEAL: GOOD 95.00-115.00, STANDARD 65.00-90.00, UTILITY 35.00-60.00, BULL CALVES 120.00-170.00.  
SHEEP & LAMBS: GOOD 48.00-52.50, UTILITY 45.00-46.50, SLAUGHTER EWES 10.50-16.00.  
GOATS: 24.00-52.00.  
SLAUGHTER CATTLE: STEERS: GOOD 68.00-69.25, STANDARD 62.00-65.00, UTILITY 55.00-60.00. HEIFERS: GOOD 62.00-68.00, STANDARD 55.00-58.00, UTILITY 48.00-52.00.  
COWS: COMMERCIAL 48.00-54.00, UTILITY 42.00-46.00, CANNER AND CUTTER 40.00 TO DOWN.  
BULLS: COMM. & GOOD 62.00-68.50, CUTTER AND UTILITY 55.00-60.00.  
HEIFER CALVES: GOOD 75.00-90.00, MEDIUM 55.00-70.00. STEER CALVES: GOOD 85.00-105.00, MEDIUM 65.00-75.00. HEIFER CALVES: GOOD 75.00-102.00, MEDIUM 60.00-70.00.

**Isennock Auction**

New Park, PA

Monday, July 29, 1991

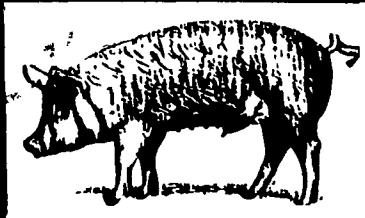
Report supplied by auction  
SLAUGHTER COWS: LOW TO GOOD 53.00 AND DOWN.  
VEAL CALVES: 90-100 LBS. 80.00-90.00; 70-85 LBS. 72.00-90.00; WEAK AND ROUGH 78.00 AND DOWN.  
FARM CALVES: 115-125 LBS. 145.00-155.00; 100-110 LBS. 135.00-170.00; 90-95 LBS. 120.00-157.00; 80-85 LBS. 105.00-126.00.  
HEIFER CALVES: 105-125 LBS. 170.00-178.00; 80-100 LBS. 102.00-142.00.  
FEEDER STEERS: 365-500 LBS. 85.00-94.00.  
SOWS: 460-580 LBS. 39.00-39.50.  
GOATS: 35.00-68.00 HEAD.



**THANK YOU**

To

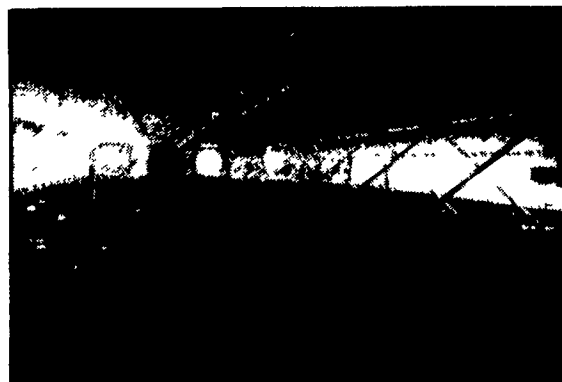
**MR. & MRS. GERRY DANIELS**



**For Choosing TRI-COUNTY To Construct Your New Finishing Building**



Turnkey Construction By TRI-COUNTY



Interior View



Computerized Environmental Control

**Featuring:**



- Stainless Steel Feeders
- Wet Cast Gang Slats
- Solid Steel Penning



- Galvanized Feed Bins
- Flex Flow Auger System With Direct Drive And Heavy Duty Bin Boot



**TRI-COUNTY**

**CONFINEMENT SYSTEMS, INC.**

608 E. Evergreen Rd., Lebanon, PA 17042

Ph: 717-274-3488

Hours: Mon-Fri  
7:00 to 4:30;  
Sat. 8:00 to 12:00