

**Dewart Livestock**

Dewart, PA  
July 22, 1991

**CATTLE** 105...PDA...Compared with last weeks market: Slaughter cows steady to weak. Couple Select slaughter steers 68.00; few Select Holsteins 61.75-64.50, few Standard 56.50-62.00. Couple Select sl. heifers 62.75-65.25. Few Breaking Utility & Commercial slaughter cows 54.00-55.00, one 56.00, Cutter and Boning Utility 49.00-54.00, Canner and Low Cutter 45.25-48.50, Shells down to 40.00. Couple Yield Grade No. 1, 1170 lbs. sl. bulls 60.00 and 1435 lbs. 63.00, couple No. 2, 800/900 lbs. 52.00. Feeder Cattle: Few Large Frame No. 2, 925/1060 lbs. steers 67.75-74.50.

**CALVES** 139...Few Good vealers 95.00-100.00, few Standard and low Good 60/85 lbs. 50.00-70.00. **FARM CALVES:** No. 1, 85/130 lbs. Holstein bulls 160.00-192.50, No. 2, 80/120 lbs. 120.00-170, few down to 95.00; No.1, 85/120 lbs. Holstein heifers 140.00-175.00. Beef cross 80/170 lbs. bulls 117.50-162.50.

**HOGS** 17...Two lots US 1-3 230 lbs. barrows and gilts 53.50 and 235 lbs. 54.00. Few US 1-3 380/500 lbs. sows 38.00-41.50.

**FEEDER PIGS** 15...Few lots US No. 1-3 25/35 lbs. feeder pigs 38.00-43.00 --- all per head.

**SHEEP** 18...Few Choice 95/120 lbs. sl. lambs 51.00-57.00, few Good 50/80 lbs. 30.00-40.00. - all cwt.

**GOATS** 0...No market test - per head.

**New Wilmington Livestock**

N. Wilmington, PA  
July 22, 1991

**CATTLE** 142...PDA...Compared with last Monday's market: Slaughter cows .50 to 1.00 lower. Breaking Utility & Commercial sl. cows 49.25-52.00, low dressing down to 47.00, Cutter & Boning Utility 47.00-51.25, Canner & Low Cutter 40.00-47.00, Shells down to 20.00. One Standard sl. bullock 63.75. Few Yield Grade No. 1, 1060/2175 lbs. sl. bulls 57.75-61.25, one No. 2, 1065 lbs. 56.25. Feeder Cattle: Few Medium Frame No. 1, 405/480 lbs. heifers 56.00-70.00. **CALVES** 196. 80% of supply sold to

return to the farm. Couple Choice vealers 107.00 & 110.00, one Good 100.00, Standard & Good 60/120 lbs. 70.00-90.00, lot Utility 54 lbs. 62.00. Farm Calves: Hol. Bulls No. 1, 85/135 lbs. 125.00-170.00, #2, 80/120 lbs. 92.50-130.00; No. 1, Hol. Heifers 80/140 lbs. 100.00-152.50. Beef cross 55/140 lbs. bulls & heifers 100.00-200.00.

**HOGS** 248...Barrows and gilts: about steady. US No. 1-2 220/260 lbs. barrows and gilts 53.50-54.00, lot 54.75, 1-3 220/260 lbs. 52.50-53.50, lot 2-3 255 lbs. 51.00, 1-3 200/220 lbs. 50.00-52, 160/185 lbs. 45.00-47.75. **SOWS:** 3.00 to 4.00 higher. US No. 1-3 335/650 lbs. sows 40.00-45.00, one 47.00. Boars 32.00-38.00.

**FEEDER PIGS** 95...US No. 1-3 30/40 lbs. feeder pigs 29.00-39.00, few 90 lbs. 61.00-67.00 --- all per head.

**SHEEP** 156...SPRING SLAUGHTER LAMBS...High Choice & Prime 85/105 lbs. spring slaughter lambs 60.00-68.00, Choice 75/105 lbs. 50.00-60.00, few Good & Choice 70/100 lbs. 40.00-49.00; Good & Choice 45/75 lbs. feeder lambs 30.00-45.00. Slaughter sheep 5.00-17.00. - all cwt.

**GOATS** 5... Few Medium and Large 33.00-47.00 --- all per head.

**Eighty-Four Livestock**

Eighty-Four, PA  
July 22, 1991

**CATTLE** 310... PDA ...Compared with last Monday's market: Slaughter cows .50 to 1.00 lower. Few Choice slaughter steers 69.50-74.00, Select 65.50-69.50, few Standard 60.00-64.00. Choice sl. heifers 68.00-72.00, few Select 64.50-68.50, Standard 60.00-63, few Utility 59.00-62.00. Breaking Utility & Commercial sl. cows 50.00-55.00, couple 56.50, Cutter & Boning Utility 48.50-51.50, Canner & Low Cutter 38.00-48.00, Shells down to 28.00. Yield Grade No. 1, 1100/1950 lbs. sl. bulls 58.00-69.50, No. 2, 900/1480 lbs. 53.00-58.50. Feeder Cattle: Medium & Large Frame No. 1, 400/600 lbs. steers 80.00-95.00, 220/395 lbs. 100.00-118.00. Medium & Large Frame No. 1, 300/550 lbs. heifers 75.00-90.00, few 225/260 lbs. 94.00-108.00. Medium Frame No. 1, 400/600 lbs. bulls 70.00-90.00, few 250 lbs. up to 110.00.

**CALVES** 195...Few Choice vealers 100.00-108.00, Good 91.00-98.00, Standard & Good 90/120 lbs. 74.00-89.00, few 60/85 lbs. 61.00-80.00, few Utility 45/60

lbs. 40.00-60.00. Farm Calves: Hol. Bulls #1, 90/125 lbs. 140.00-200.00, No. 2, 80/120 lbs. 100.00-145.00. Few No. 1, Holstein Heifers 90/135 lbs. 100.00-155.00. Beef cross 80/120 lbs. bulls and heifers 100.00-185.00.

**HOGS** 96...Barrows and Gilts: .50 lower. US No. 1-2 225/250 lbs. barrows and gilts 52.40-52.90, 1-3 220/260 lbs. 51.10-52.10, 2-3 235/265 lbs. 50.00-51.00. US No. 1-3 300/600 lbs. sows 44.50-45.50, 2-3 280/630 lbs. 42.00-45.00. Boars 36.00-39.00.

**FEEDER PIGS** 15...US No. 1-3 30/60 lbs. 22.00-40.00 --- per head.

**SHEEP** 288...SPRING SLAUGHTER LAMBS...High Choice 90/108 lbs. spring lambs 60.00-62.00, small lot 64.00, Choice 75/100 lbs. 55.00-58.00. Good & Choice 45/75 lbs. feeder lambs 42.00-49.00. Slaughter sheep 14.00-18.00 - all Cwt.

**GOATS** 28...Large 40.00-51.00, Medium 20.00-38.00, Small 15.00-24.00 --- all per head.

**Belknap Livestock**

Dayton, PA  
July 24, 1991

**CATTLE** 65...PDA...Compared with last Wednesday's market: Individual Select Holstein steers 62.75, one Standard 58.75. Couple Choice sl. heifers 65.00 & 68.00, one Select 57.25. Few Breaking Utility and Commercial slaughter cows 49.50-51.50, one 54.00, Cutter and Boning

Utility 47.00-50.75, Canner and low Cutter 39.50-46.25, Shells down to 25.00. Few Yield Grade No. 1, 1090/1500 lbs. sl. bulls 59.50-63.75. **FEEDER CATTLE:** Few Medium & Large Frame No. 1, 870/1000 lbs. steers 64.50-66.25. Few Medium & Large Frame No. 1, 400/610 lbs. 71.00-75.50. Few Medium Frame No. 1, 320/475 lbs. bulls 82.50-92.50, few Medium #2, 330/600 lbs. 63.00-69.50.

**CALVES** 135... Supply included 80% return to farm...Standard and Good 60/110 lbs. vealers 50.00-77.00. Farm Calves: No. 1, Holstein Bulls 90/140 lbs. 125.00-173.00, 80/85 lbs. 80.00-125.00, No. 2, 85/125 lbs. 80.00-132.00; No. 1, Hol. Heifers 80/150 lbs. 112.50-176.00. Beef cross 80/135 lbs. bulls & heifers 120.00-201.00.

**HOGS** 204...Barrows and gilts: steady to .25 lower. Couple lots US No. 1-2 255 and 265 lbs. barrows and gilts 53.00 and 54.00, 1-3 215/225 lbs. 52.00-53.50. Sows: Few US No. 1-3 300/605 lbs. sows 36.50-41.00. Couple Boars 34.00&35.50, couple lt. weights 40.00&44.50.

**FEEDER PIGS** 65...US No. 1-3 20/35 lbs. feeder pigs 21.00-30.00, 1-3 40/50 lbs. 39.00-41.00 - all per head.

**SHEEP** 63...Spring slaughter lambs: Choice 80/105 lbs. spring sl. lambs 48.00-50.50; Good & Choice 55/80 lbs. feeder lambs 45.00-48.50. Slaughter sheep 11.50-16.50. - all Cwt.

**GOATS** 5...One Large 75.00, few Medium 47.00-55.00, one Small 17.00 - all per head.

**Peoria Cattle**

Peoria, IL  
July 25, 1991

**CATTLE:** COMPARED WITH LAST WEEK, SLAUGHTER STEERS AND HEIFERS STEADY TO .50 LOWER. SLAUGHTER COWS AND BULLS MOSTLY STEADY. SUPPLY MAINLY SELECT TO AVERAGE CHOICE SLAUGHTER STEERS AND HEIFERS WITH ABOUT 8% COWS. RECEIPTS THIS WEEK ABOUT 900 AS COMPARED WITH 950 A WEEK AGO AND 992 A YEAR AGO.

**SLAUGHTER STEERS:** CHOICE 2-4 975-1300 LBS. 70.00-72.00

**MIXED SELECT & CHOICE** 2-3 950-1300 LBS. 67.00-71.00 SELECT 2-3 950-1200 LBS. 63.00-67.00

**SLAUGHTER HEIFERS:** CHOICE 2-4 950-1200 LBS. 69.00-71.00

**MIXED SELECT & CHOICE** 2-3 950-1150 LBS. 66.00-69.00 SELECT 2-3 800-1000 LBS. 62.00-66.00

**COWS:** BREAKING UTILITY & COMMERCIAL 2-4 47.00-55.00 FEW 55.00-56.00 CUTTER & BONING UTILITY 1-3 46.00-53.00 CANNER & LOW DRESSING CUTTER 1-2 39.00-43.00

**BULLS:** YG 1-2 1200-2000 LBS. 62.00-68.00, FEW YG 2 60.00-62.00



**HAY, STRAW & GRAIN SALES**

Every Wednesday  
At 11:00 A.M.

**GOOD'S AUCTION**  
111 Maple Ave.  
Leola, PA 17540  
717-656-8911  
717-656-9554

**FOR SALE SHAVINGS & SAW DUST**

- ★ Delivered To Your Location
- ★ Year Round Supply
- ★ Excellent for Dairy or Horses

Call For Price To Your Area  
**717-653-5935**

*J.D. Martin inc.*  
Mt. Joy, PA

20 Springing Heifers  
Sell Wed., July 31  
from local heifer raiser

**NEW HOLLAND SALES STABLES INC.  
THE ACTION AUCTION**

**HORSE SALE**  
Fri., August 9 - 7:00 P.M.  
Tack 6 P.M.  
Horses Hitched 12 Noon

LIVESTOCK IS OUR ONLY BUSINESS

**MONDAY**

**SLAUGHTER HOGS**



**EARLY BIRD HOG SALE  
8:00 A.M.**

Sell Your Hogs At New Holland Sales Stables, Inc.  
See them weighed, sold and pickup your check.

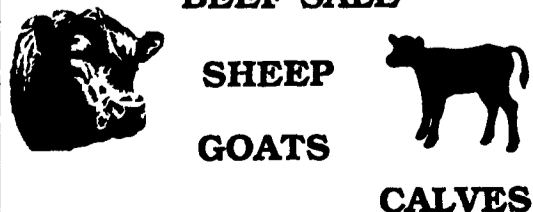
**10:00 AM**



**HORSES  
MULES**

**1:30 PM**

**BEEF SALE**



**SHEEP  
GOATS  
CALVES**

**WEDNESDAY**

**HEIFER SALE  
11:00 AM**

**COW SALE 12:00 NOON**



We have the usual run of 50 to 100 Heifers, all ages. Loads of fresh cows and springers from our regular shippers. Also some local fresh cows and springers.

**1:30 P.M.  
FEEDER PIG SALE**



Pigs are accepted after 6:30 A.M. State graded from 8 to 12 Dairy Barn and Feeder Pig Barn are cleaned and disinfected weekly for your protection.

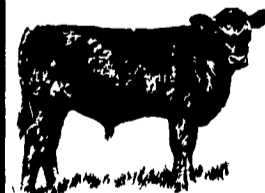
**THURSDAY**

**Beef Auction  
10:00 A.M.**

**BULLS  
STEERS  
BEEF COWS**



**1:00 P.M.  
STOCKERS**



**&  
FEEDERS**

**12:30 P.M.**

**SHEEP  
GOATS  
CALVES**



**NEW HOLLAND SALES STABLES, INC.**  
12 Miles East of Lancaster Off Route 23, New Holland, Penna.

**MANAGERS**  
Norman & David Kolb - 717-397-5538

**Field Representatives**  
Luke Eberly - 215-267-6608 738-1865  
Homer Eberly - 215-267-3047  
Ron Ranck - 717-656-9849

**Sale Barn Office Manager**  
Roger Floyd - 717-354-4341  
FAX # 717-355-0706

**Order Buyer**  
Paul Good - 215-445-6662