



Phila. Fruit Market

July 24, 1991

PARTLY CLOUDY 76-99.
 GRAPEFRUIT WHITE LOWER,
 OTHERS STEADY FL 4/5 buctn Indian
 River Red 23-48s 12.50 fair qual 27-56s
 8.00 White 23- 36s 6.00-8.00 CA ctn Red
 23s 11.50 27s 14.00 32-40s 15.00 48s
 13.50 56s 9.50 fair qual 32-36s 11.50 40s
 10.00-11.50 48s 11.50.

LEMONS BAHAMAS LOWER,
 OTHERS STEADY CA ctn 115s 35.00
 140s 29.00-30.00 165s 27.00-30.00 few
 30.50 200s 22.00- 25.00 mos 22.00-24.50
 235s 14.50-15.50 fair qual 95s 25.00 one
 lot 18.00- 20.00 115s 24.00-25.00 mos
 24.50 140s 26.00 165s 26.00-26.50 200s
 23.00 235s 13.00 ord qual 115s 19.00 140s
 19.50-21.00 165s 18.50-19.00 200s
 13.00-13.50 235s 12.50 FL 4/5 buctn
 140-165s 19.00 ord qual 200s 10.50
 BAHAMAS 4/5 buctn 75-115s & 165s
 24 00 200s 20.00 fair qual 75-95s & 165s
 18.00 SPAIN crt ord cond 70s 5.00-8.00
 CHILE crt 110s 24.00-25.00 120s 24.00
 130s 24.00-25.00 140s 21.00-25.00 mos
 21.00-24.00 150s 22.00 160-180s 25.00.

LIMES ABOUT STEADY 10-lb ctn
 Persian Seedless type FL 63s 2.75-3.00
 MEXICO 48s 3.00 54s 3- 3.50 63s
 2.75-3.50 mos 3.00.

MISCELLANEOUS CITRUS OFFER-
 INGS INSUFFICIENT TO QUOTE

ORANGES STEADY CA ctn Valencia
 72s 31.00 fair cond 20.00 88s 29.00-30.00
 113s 25.00 fair qual 56s 17.00 88s
 15 00-18.00 138s 20.00 MOROCCO
 15-kilo ctn Valencia 56s & 64s ord cond
 5 00-8.00 75s 10.00 ord cond 5 00-8.00

TANGELOS NO OFFERINGS
 TANGERINES NO OFFERINGS.
 TEMPLES NO OFFERINGS.

APPLES STEADY CONTROLLED
 ATMOSPHERE STORAGE ctn tray pack
 WA Red Delicious WAExFcy 56- 64s

25.00 88s 21.00-24.00 mos 22.00-24.00
 100s 19.50-21.00 mos 20.00 113s 18.50
 USExFcy 72s 20.00 80s 18.00 88s
 19.00-20.00 100s 18.00-20.00 113-125s
 17.00-17.50 WAExFcy 100s 18.00 113-125s
 16.00 USFcy 100-113s 16.50 125s 15.50
 Golden Delicious WAExFcy 88s
 23.00-25.00 100s 20.00-21.00 mos 21.00
 113s 18.50 USExFcy 72-88s 21.00 100s
 20.00 113s 17.00-18.00 WAExFcy 100s 18.
 00 ctn cell pack WA Golden Delicious
 USExFcy 120s 19.00 ctn 12-3 lb film bags
 WA WAExFcy 2-1/4" min Red Delicious
 15.00 ctn 7-5 lb film bags WA USExFcy
 Granny Smith 2-1/2" min ord cond
 5.00-6.00 NEW CROP ctn tray pack
 ARGEN- TINA Granny Smith 80-90s
 27.00.

APPLE-PEARS NO OFFERINGS.
 APRICOTS ABOUT STEADY CA
 24-lb lug Patterson 10 sz fair cond
 4.00-6.00.

AVOCADOS ABOUT STEADY CA
 2-lyr ctn Hass 48s 27.00-28.00 FL flat ctn
 various Greenskin varieties 8-9s
 7.00-8.00.

BANANAS Imports ctn approx 40-lb
 9.25-10.50 fair qual 9.00 film wrpd 9.25
 Institutional pack Petite 150s 12.00.

BLACKBERRIES OFFERINGS
 INSUFFICIENT TO QUOTE.

BLUEBERRIES STEADY NJ flats
 12-1 pt film wrpd cups lge 9.00-10.00.

CHERRIES STEADY WA 20-lb lug
 WA #1 Bing 10-1/2 row sz & lgr
 25.00-30.00 11-1/2 row sz & lgr ord cond
 10.00 12 row sz & lgr 18.00-20.00 Lam-
 bert 11-1/2 row sz & lgr 23.00 12 row sz &
 lgr 18.00 Rainier 11-1/2 row sz & lgr 50.00
 Van 11-1/2 row sz & lgr 18.00-20.00 UT
 20-lb lug US#1 Lambert 54/64" min 15.00
 Rainier 54/64" min 30.00-35.00.

COCONUTS DOMINICAN REPUB-
 IC sacks 40s few 14.00.

CRANBERRIES NO OFFERINGS.
 FIGS OFFERINGS INSUFFICIENT

TO QUOTE.

GRAPES-TABLE STEADY CA 22-lb
 lug Thompson Seedless 20.00-22.00 fair
 cond 8.00-10.00 Flame Seedless 17.00 fair
 cond 7.00-12.00 Exotic 12.00-14.00 mos
 14.00 23-lb lug Perlette 17.00 few hias
 21.00 ord cond 5.00-10.00 Flame Seedless
 16.00- 20.00 few 15.00 fair qual & appear
 8.00-12.00 AZ 22-lb lug Thompson Seed-
 less fair cond 8.00-10.00 MEXICO 22-lb
 lug Thompson Seedless fair cond 12.00
 ord cond 4.00-10.00 Flame Seedless fair
 cond 12.00.

KIWIFRUIT STEADY NEW ZEA-
 LAND 1-lyr flat 36s 8.00 39s 7.00-8.00
 mos 8.00 42s 8.00 CHILE 1-lyr flat 33s
 fair cond 3.00-4.00 36s 6.50.

MANGOS STEADY MEXICO flat ctn
 Tommy Atkins 9-16s 5.00.

NECTARINES STEADY CA 25-lb ctn
 Red Diamond 56 sz 15.50 64 sz 14.50 72
 sz 13.50 Firebrite 64 sz 12.00 72-80 sz
 12.00 Flavortop 56 sz 15.50 60-64 sz
 13.50-14.50 72 sz 13.50 80 sz 12.00 Sum-
 mer Grand 60 sz 13.00-14.00 70 sz
 12.50-13.00 2-lyr ctn Flavortop 40-42s
 16.00 fair qual 12.00 48-50s 13.50-16.00
 56s & 72s 13.50 Sungrand 50s 11.00.

PAPAYAS OFFERINGS INSUF TO
 QUOTE.

PEACHES SC LOWER, CA STEADY
 3/4 buct & ctn US#1 Extra unless other-
 wise stated SC Jefferson 2-1/2" & up
 12.00-13.00 mos 12.00 2-1/4" & up
 9.00-10.00 2-1/8" & up 7.00-8.00 2" & up
 4.00-5.00 NJ Red Haven 2-1/2" & up
 16.00 2-1/4" & up 10.00-12.00 mos 11.00
 one label 14.00 CA 2-lyr ctn Elegant Lady
 32-36s 12.00 40-42s 12.00 fair qual
 8.50-9.00 48-50s 11.00 1-lyr Babcock
 32-35s 9.50.

PEARS OFFERINGS INSUFFICIENT
 TO QUOTE.

PERSIMMONS OFFERINGS INSUF
 TO QUOTE.

PINEAPPLES HAWAII ctn via air 6s
 11.75-12.00 COSTA RICA 2-lyr ctn 10s
 14.00 12s 12.00 14s 11.00.

PLUMS ABOUT STEADY CA 28-lb
 ctn Santa Rosa 2x3 sz 15.00 ord cond
 3.00-8.00 2x3x3 sz & 3x3 sz 14.00 ord
 cond 3.00-8.00 2x3x4 sz 10.00-13.00 mos
 12.00 ord-fair cond 3.00-8.00 3x4 sz 12.00
 ord-fair cond 3.00-8.00 3x4x4 sz
 7.50-10.00 ord cond 3.00 4x4 sz 6.00-8.00
 mos 6.00 few 9.00 fair cond 3.00 3x4x5 sz
 5.00-7.00 fair cond 3.00 4x5 sz 6.00 fair
 cond 2.50-4.00 5x5 sz 5.00 fair cond 3:00
 Blackamber 2x3 sz fair cond 5.00-6.00
 2x2x3 sz 13.00 2x3 sz 10.50-12.00 2x3x3

sz 9.50 3x3 sz 8.00-10.00 2x3x4 sz
 8.00-9.00 3x4 & 3x4x4 sz 6.00-7.00 4x4
 sz 6.00 Queen Rosa 3x4 sz 10.00 3x4x4 sz
 9.00 El Dorado 3x4 sz 12.00 3x4x4 sz
 9.00-11.00 3x4x5 sz 9.00 Wickson 3x3 sz
 14.00 2x3x4 sz 13.00 July Santa Rosa 3x4
 sz 8.00 Nubiana 3x4x4 sz & 4x4 sz 7.00
 Simka Rosa 2x3 sz 15.00-16.00 2x3x3 sz
 14.00-15.00 3x3 sz 13.00-14.00 2x3x4 sz
 12.00 3x4 sz 11.00 3x4x4 sz 10.00 4x4 sz
 9.00 Simka 2x3x4 sz 14.00 Friar 3x3 sz
 16.00.

POMEGRANATES NO OFFERINGS.
 RASPBERRIES HIGHER CA flats
 12-6 oz film wrpd cups Red 15.00.

STRAWBERRIES ABOUT STEADY
 CA flats 12-1 pt bkt med incl via air
 10.00-12.00 one labels 13.00 fair cond
 8.00.

CANTALOUPS ABOUT STEADY CA
 1/2 ctn 12s 10.00 15s fair cond 5.00 18s
 8.50-9.00 NJ 1-lyr ctn 6s & 8s 5-5.50 mos
 5.00 MEXICO 1/2 ctn 15-23s 10.50-11.00.

HONEYDEWS ABOUT STEADY CA
 2/3 ctn 5s 10.00-12.00 fair cond 5.00 6s
 12.00.

MISC MELONS CA 2/3 ctn Orange
 flesh 6-8s 12.00 Juan Canary 5s 6.00-12.00
 6s 11.00-12.00 8s 11.00-12.00 Sharlyn 6s
 13.00-14.00 AZ 2/3 ctn Crenshaw 3s 11.00
 Sharlyn 4s 11.00.

WATERMELONS STEADY avg
 weight per melon NC Crimson Sweet 34-lb
 4.50-5.00 30-lb 3.50-4.00 28-lb 3-3.50 IN
 Sangra 28-lb 4.00 VA Sangra 20-lb 2 00
 NJ Crim- son Sweet 27-lb 3.00 24-lb 2.50
 16-lb 1-1.25 ctn per ctn Sugar Baby's 6s
 5-5.50.

**Leinbach's Shippensburg
 Produce Auction**

(717)532-5511
 Shippensburg, PA
 Average Prices Of #1 Produce
 July 18-24. Open 11 a.m. Mon. thru Sat.

Report Supplied by Auction
 APPLES: 2.50-6.00 1/2 BU.
 APRICOTS: 2.00-8.00 1/2 BU.
 BLUEBERRIES: 9.00-14.00 12 PT.
 FLAT.
 GREEN BEANS: 6.00-12.00 1/2 BU.
 YELLOW BEANS: 4.00-10.00 1/2 BU.
 LIMA BEANS: 4.00-8.00 1/2 BU.
 CABBAGE: 4.00-6.00 50 LBS.
 CANTALOPES .50-1.50
 EACH, SMALL. 15-.50.
 CUCUMBERS. 2.00-6.50 1/2 BU.

PICKLES: 5.00-12.00 1/2 BU.
 EGGS: .50-.85 DOZ.
 NECTARINES: 4.00-10.00 1/2 BU.
 PEPPERS: LARGE GREEN 7.00-13.00
 1 1/9 BU., SMALL TO MEDIUM
 6.00-10.00 1 1/9 BU.
 PLUMS: 2.00-8.00 1/2 BU.
 RED BEETS: 5.00-12.00 15 CT.
 BUNCH.
 PEACHES: 5.00-12.00 1/2 BU., SMALL
 CLING 2.00-4.00 1/2 BU.
 BLACKBERRIES: 12.00-15.00 12
 PINTS.
 YELLOW SQUASH AND PATTY-
 PANS: 2.00-4.00 1/2 BU.
 SWEET CORN: WHITE: .85-2.25
 DOZ.
 TOMATOES: 6.00-20.00 25 LBS
 LARGE, 5.00-14.00 25 LBS. MEDIUM,
 SMALL 2.00-8.00 25 LBS..
 WATERMELONS: LARGE .50-2.50
 EACH, SUGAR BABIES AND YELLOW
 DOLLS .50-1.50 EACH.
 ZUCCHINI: 3.00-7.00 1/2 BU.
 POTATOES: 5.50-7.00 1/2 BU.

**Phila. Potato &
 Onion**

July 23, 1991

CLOUDY 79-94.
 ONIONS-DRY ABOUT STEADY
 50-lb sacks US#1 or generally good quality
 and condition Yellow unless otherwise
 stated CA grano type jumbo 13.00 few
 13 50-14.00 previous 12.50 Repacker sz
 12.00-13.00 TX grano type Jumbo
 13.00-13.50 mos 13.00 Repacker sz 13.00
 25-lb white boiler type 15.00 Red jumbo
 11.00 med 800 NM grano type jumbo
 13.00 some 14.00 White jumbo 19.00
 25-lb sks Red jumbo 10.00 med 7-750.
 POTATOES ABOUT STEADY 50-lb
 sacks US#1 size A washed or brushed
 unless otherwise stated ROUND WHITES
 New Crop DE 600-750 mos 600-650 lge
 800-10.00 paper sks baled 10-5 lb
 950-10.00 NJ 7-750 lge 900 ROUND
 REDS new crop WI 850-900 sz B
 12.50-13.50 mos 13.00 AL 850 sz B 13 00
 DE 900-10 00 sz B 11.00-12.00 LONG
 WHITES CA 50-ctn 13 00 RUSSETS
 50-lb carton count ID 70- 80s 15 00-16 00
 mos 16.00 90s 14.00-15 00 few 13 00 100s
 12 00-13 00 few 11 00 CA Norkotah
 70-80s 15 00 90s 14 00-15 00 100s
 10 00-13 00 mos 11 00- 12 00

POURED SOLID CONCRETE STORAGE SYSTEMS

17 Years Experience In Pouring Concrete Manure Pits!



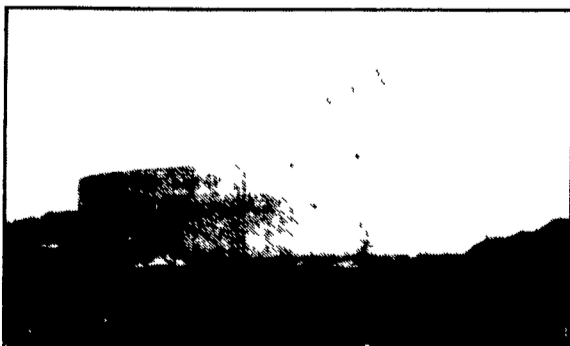
Far Left: 1-Million Gallon Circular
 Manure Storage Tank
 Far Right: 2 Silage Pits
 In-Barn Manure Receiving Pit



Construction Of Partially In-Ground
 Liquid Manure Tank - 400,000 Gallons



300' Long Manure Pit For Hog
 Confinement



Above Ground Liquid Manure Tank
 425,000 Gallons

**CONCRETE PUMPING
 SERVICE AVAILABLE**



Mixer And Boom Trucks



92' Boom Placing Concrete



Placing Concrete On Site

Take the questions out of your new construction.
 Call Balmer Bros. for quality engineered walls.

All sizes
 available
 round
 or
 rectangular

Invest in Quality - It will last a lifetime.

Balmer Bros.

CONCRETE WORK, INC.

243 Miller Road
 Akron, PA 17501

(717) 733-0353
 6:30 AM - 3:30 PM

(717) 859-2074
 After 6:00 PM