

35 TRUCKS & TRAILERS

A Complete Line of Kiefer Trailers for Your Horse and Livestock Hauling Needs from Hostetlers

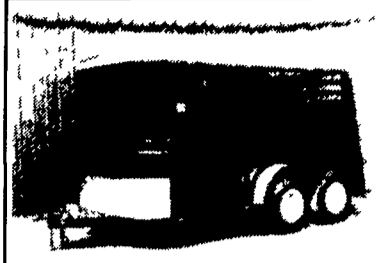


KIEFER HORSEMAN EXPRESS
Excellent Little 2 Horse Model with Many Quality Features and Options to Match In Stock Models Starting at **\$2842**

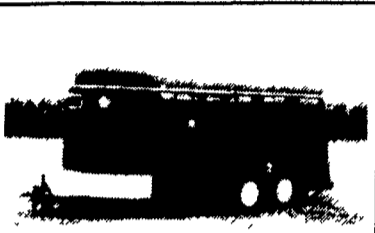


"When It's Kiefer Built It's Really Built"

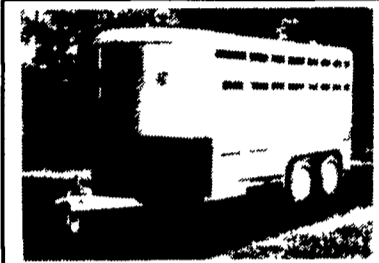
We have many other trailers in stock or available to fit your needs. Give us a call before you buy.



KIEFER BUILT RENEGADE
Great Horse/Stock Combo Trailer with Fiberglass Roof and Standard Features Costing Much More on the Competitions Trailers. 16' in Stock Starting at **\$4100**



KIEFER STOCKMAN EXPRESS
Economy Minded Stock Trailer Built to do the Job In Bumper Pull or Gooreneck 16' Bumper Pull in Stock Starting at **\$3250**



KIEFER DELUXE ALUMINUM II
Fiberglass Roof, Torsion Axles, Radial Tires, Quality Aluminum Construction, Many Options Available to Personalize Your Own 16' Bumper Pull in Stock. Starting At **\$5962**



Hostetler Truck Bodies & Trailers

Rt. 322 Milroy, PA 17063
1-800-441-5161



CONSTRUCTED FOR YEARS OF MAINTENANCE-FREE SERVICE.

Look over these outstanding features.

- **Less weight.** Eby aluminum bodies weigh up to 30% less than comparable steel and wood construction.
- **Less maintenance.** Aluminum construction won't rust or rot - never needs painting.
- **Long-life durability.** Heavy-duty structural components and hollow-tube frame combine with aluminum floor and sides to stand up to years of hard work.

SPECIAL
(1) Only
16' L x 8' W x 54" Sides
Grain Body With Shurlok Roll-Tarp
Call Leon For Special Pricing

Distributor for Roll Tarps

For more information or prices, call us in Blue Ball, PA at
(800) 292-4752
M.H. EBY, INC.
P.O. Box 127 Blue Ball, PA 17506
(717) 354-4971

Mark VII - Pickups - Broncos - Bronco II - Stake Body - Crew Cab

Custom Vans
XLT
Grand Marquis
Marquis

Lynx
Topaz
Diesel Pickups
Mustang
T Bird

'91 FORD CREW CABS

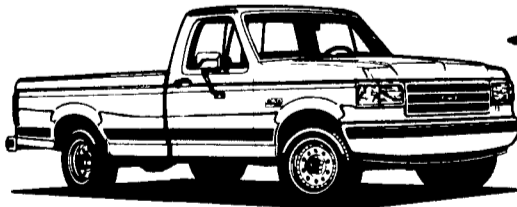
Shop these trucks today — late availability expected on 1992 crewcabs.



6 To Choose From!

'91 FORD F-150 PICKUP
(Stk #7488)

\$9450*



FREE BEDLINER
With Each F-Series Truck Purchased thru 7/29/91

'91 FORD AEROSTAR EXT. CARGO VAN
\$12,998*



'91 FORD RANGER XLT PICKUP
\$8,499*



* Prices include applicable rebates plus \$500 cash or trade. Tax, tags and doc fees additional.



'87 FORD CLUB VAN

XLT, V-8, AT, AC, Tilt, Cruise, Only 27,000 Mi., #P1051
Was \$12,498

NOW \$11,998



'89 FORD F-250 XLT

V8, PS, PB, AC, #7537A

Was \$13,998

NOW \$13,498



'91 FORD AEROSTAR

6 Cyl., AC, PS, PB, AC, Tilt, Cruise, 7 Passenger #P1042

Was \$17,998

NOW \$16,998



'88 DODGE RAM VAN

V8, AT, AC, 15 Passenger, Only 14,000 Mi. #7513A

Was \$11,498

NOW \$10,498



'88 FORD F-150 SUPERCAB

V8, AT, PS, PB, AC, AM/FM #P920

Was \$11,899

NOW \$10,498

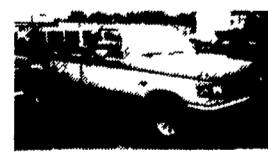


'90 FORD WEGE CONV. VAN

H1 Top, V-8, AT, TV, VCP, Loaded #7717A

Was \$21,498

NOW \$20,498



'90 FORD F-150 4x4 XLT

6 Cyl., AT, AC, PW, PDL, Tilt, Cruise, #P1040

Was \$14,998

NOW \$14,498



SUPER SPECIAL

'80 FORD F-100 PICKUP

6 Cyl., PS, PB, #7152A

Was \$2,998

NOW \$1,998



'85 FORD F-150 PICKUP

351, AT, PS, PB #7689A

Was \$6,998

NOW \$6,298

Unless This Emblem Is On Your Car Or Truck You Probably Paid Too Much

9-9 Daily
9-5 Sat.
717-272-7671



SHEEHY LEBANON
SHEEHY FORD LINCOLN MERCURY INC.
20th & Cumberland St., Lebanon

Parts Dept. Open
Daily 8-5
Sat. 8-12
717-273-8168

Tempo - Cougar - Continental - Town Car - 4x4 - Box Van - Rangers