

35 TRUCKS & TRAILERS

SHIRK STOCK TRAILERS

BUMPER HITCH & GOOSENECK HITCH
 UNITS IN STOCK:
 6'x12' SHIRK, BUMPER
 6'x16' SHIRK, BUMPER
 6'x16' SHIRK GOOSENECK
 7'x20' MORITZ ALUMINUM
 GOOSENECK
 OTHER SIZES AVAIL

MARTIN HARDWARE & EQUIP. CO. INC.

Rt. 501, 1/4 Miles South of Schaefferstown, PA
 PHONE: (717) 949-6817 or 949 2549
 Mon. & Wed. 8 to 5;
 Tues., Thurs., Fri. 9 to 8;
 Sat. 8 to 4

'89 Dodge D350 Power Ram 4x4, 360 auto., PB, PS, AM-FM, 8,700 GVW, black & silver, 36,000 miles, excellent condition, \$9,975. 717-733-2873

'89 Dodge D350, 4x4, Power Ram, 360, 4 spd., PS, PB, air, AM-FM, 8,700 GVW, Michelin radials, 28,000 miles, black, excellent condition, \$9,975 717-733-2873

'87 Ford F150, 4x4, 302 EFI, HD, 4 spd., PS, PB, AM-FM, lock-out hubs, \$6,300. 717-733-2873

'87 Ford F350, 4x4, 351 auto., PS, PB, lock-out hubs, 9,000 GVW, 49,000 miles, excellent condition, \$8,975 717-733-2873

'88 Chevy Cheyenne 1500 1/2 ton, 4x4, 4.3 V6, HD, 4 spd., PS, PB, blue, 18,000 miles, like new, \$8,975 717-733-2873

'90 Chevy 2500 HD 3/4 ton 4x4, 350 auto., PB, PS, 8,600 GVW, 6,000 miles w/ balance of factory warranty, like new, \$13,900 717-733-2873

'90 Ford F150, 4x4, super cab, 302 EFI, 5 spd., PS, PB, air, AM-FM, dual tanks, lock-out hubs, 17,000 miles w/balance of factory warranty, excellent condition, \$13,500 717-733-2873

1980 Chev grain truck, 3208 CAT, 5+2, air brakes, 34,000GVW. Best Offer. 717-867-5633

1980 GMC 25,500 GVW, Detroit Diesel, 16' flatbed dump, 4' sides, good condition, \$7,800 Lycoming County. 717/322-6526.

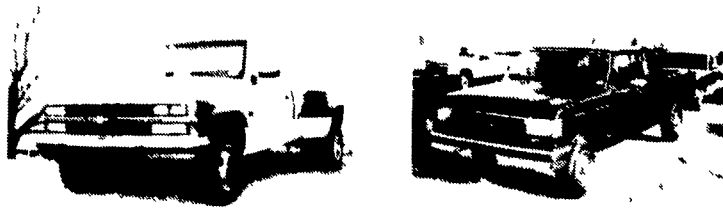
1980 Volvo 611 diesel, 18ft. insulated body w/lift gate, 25,000 GVW, fair condition, \$4500.00; 1982 Datsun diesel pick-up, needs some body work, \$600.00. 717-354-4966.

1985 F350 6.9 diesel, Ford, 12' Eby cattle bed. 301-775-7397.

1979 Ford, 250 crew cab, 4x4, air, P/B, P/S, 67,000 miles, \$2,000. (301)374-9750.

1980 Chevy 30 stake body, V8, 4 spd.; 1981 Ford F250, V8, 4 spd., super cab; 1972 Ford L-900. Call for new low prices. 717-933-4114

USED TRUCKS



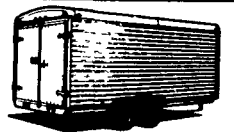
1989 Chevy Silverado Dually AT, PS, PB, AM Cass, PW, PDL, Cruise, Air, 454, Bedliner, Exc. Cond. 25,000 Miles \$13,900

90 Ford F-250 Supercab 5.7 EFI, PS, PB, AC, Auto, OD, PW, PDL, Tilt Wheel, Cruise, AM & FM Cass., Dual Tanks, Rear Sliding Window, 35,000 Miles \$13,800

Financing Available

MARTIN'S AUTO SALES
 725 E. Main St., New Holland, PA 17557
 Office (717) 354-9967

Haulmark



TACKLES THE TOUGH TASKS!

Steel-structured cargo trailers to meet every need.
 • hauling equipment
 • transporting vintage and race autos
 • carrying motorcycles and snowmobiles

Standard units or custom designs...see one today at:

RHF RINGO HILL FARMS EQUIPMENT CO., INC.

1624 Rt. 212, Pleasant Valley
 215-346-7340 Quakertown, Pa. 18951 FAX: 215-346-8041

HAIB KNUCKLE BOOM

- 22' hydraulic reach that lifts 3700 lbs and 42' reach with jibs lifts 1200 lbs Plus outriggers Asking \$12,500 OBO
- '85 Temp'l hopper trailer, 42' w/roll tarp and vibrators Asking \$13,000
- '80 Dorsey level floor trailer, 42' 60" sides w/tarp Asking \$7,200
- '77 Fruehauf van 45' 13'6" high Asking \$3,500
- '76 Dorsey FRP 45', 13'6" high w/over-head door Asking \$2,500
- '76 & '77 flat bed trailers 40', asking \$3,000, 44' asking \$3,500

302/934-8506

Our 52nd Year
INTERNATIONAL TRUCKS
 Sales • Service • Parts
IVECO
 Parts, Service & Warranty

SALES - LEASING
 STATE INSPECTION
 ASE Certified Mechanics!

CENTRAL GARAGE INC.

S. 2nd St. Womelsdorf, Pa. 19567

215-589-4581



Sales-Service-Parts



— REPAIRS —
 All Make Trucks
 And Cars

USED TRUCKS

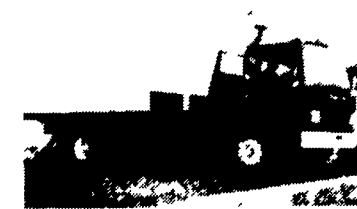
1986 International 1654	20,500 GVW	\$8,500
1983 Mack (Jerr-Dan Rollback)	33,000 GVW	\$16,000
1976 International Fleetstar, Automatic	35,000 GVW	\$7,500
1978 Ford NL-600	19,500 GVW	\$4,000
1988 Intern SOLD 1754, Reefer Unit	25,000 GVW	\$21,500
1971 International Loadstar Dump	20,500 GVW	\$2,500
1987 International 400, Stake Body	17,640 GVW	\$17,000
1984 Dodge D30/12' Van	10,000 GVW	\$5,500

New Omaha 18 Ft. Grain Body!

NEW TRUCKS

1992 UD 1300, 5 Speed	13,000 GVW	
1991 UD 1100, 5 Speed	11,000 GVW	
1991 UD 1800	17,000 GVW	
1991 International 4600LP	21,440 GVW	
1991 Inte SOLD 4700	29,900 GVW	
1990 International 900	32,900 GVW	
1990 International 700 (2 in stock)	29,000 GVW	

ASSORTED NEW AND USED TRUCK BODIES FOR SALE!



84 Mack MS 200, 23 ft. Danco Roll Back Body, Air Conditioned, Power Steering, 29,900 GVW
\$16,500



77 Ford V8 Gas Engine, 5 Speed Trans., 16' Body
\$2,000



82 Freightliner, 245" W.B., 400 Cummins, 13 Speed Trans., 12,000 Front Axle, 38,000 Rear Axle, Air Ride, Power Steering, Air Conditioned, 40" Bunk
\$12,000



79 & 80 Pete, 400 Cummins, 10 Speed Trans., 12,000 Front Axle, 38,000 Rear Axle, Air Ride, Power Steering, Air Conditioned
6,500



BIG RIG, INC.

889 E. Main St
 Ephrata, PA 17522
 717/738-2444 • 800/732-0019
 717/738-3718 • 800/822-2031



ALL UNITS MUST GO!

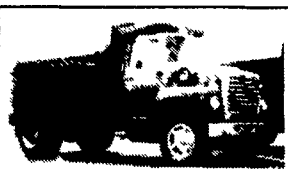
Make Reasonable Offer

KEYSTONE FORD TRUCK SALES, INC.
 Interstate 83 at 322 E • PO Box 4194 Penbar Road • Harrisburg, PA 17111

PAUL MYERS, SALES MGR JON EBY, USED TRUCK MGR
 SALES REPS: BILL VOGEL, CHARLIE KRUGER, BRUCE BINGAMAN & ANDY CHIKOTAS

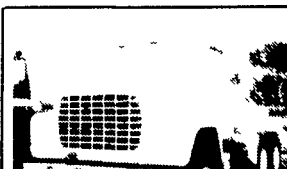
SALES 8-6 Monday-Friday
 Toll Free (800) 669-6235
 (717) 564-6661

MANY OTHER QUALITY USED TRUCKS IN STOCK!



'72 FORD LN800

391 Gas Eng., 5/2 Trans., 12,000 Front, 23,000 Rear, PS, Air Brakes, 34,000 GVW, 12 Ft Dump w/36" Sides & 42" Gate, Pintle Lock, Very Good Cond For Its Age



'85 FORD LT-9000

350 Cummins, 9 Spd., Jake Brake, 12,000 Front, 38,000 Rear, Hendrickson Suspension, 193,000 Miles



'78 MACK RD686

300 Eng., 6 Spd., Double Frame, 20,000 Front, 55,000 Rear, PS, 14 Ft. Steel Dump, With Pintle Hook



'86 GMC

210 Cat, 10 Spd. Trans., Air Brakes, AC, 30,000 GVW, New 18 Ft. Midwest Grain Dump, Steel Floor, 52" Sides, Grain Chute, 19 Ton Hoist, w/ Back-Up Alarm & Safety Prop



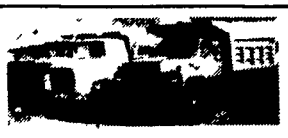
'67 CHEV C-50

327 Gas Eng., 4&2 Trans., 19,500 GVW, 14 Ft. Flatbed, Good Condition
\$2,250



'84 FORD F-700

Diesel, 5&2 Trans., PS, 27,500 GVW, 16 Ft., Flat Dump Body w/40" Bulkhead



SINGLE AXLE DUMPS

5 In Stock, 1972-1987, Air and Hyd. Brakes, Gas or Diesel, 28,000-35,000 GVW, From
\$2,500



(2) '87 FORD F-350

351 Eng., 11,000 GVW Flatbeds, Low Miles, Auto Trans.
\$7,995 Ea.



'87 IHC 1754

DT466 Eng., 5/2 Trans., 28,000 GVW, Hyd. Brakes, 20 Ft. Morgan Reefer Body w/Operating Thermoking Reefer Unit
\$12,900



'86 GMC GENERAL

Tandem Axle, Dump, 14,000 Front, 44,000 Rear, 400 Cat, 15 Spd., 16 1/2 Ft. Steel Dump Body, Low Mi., Dbl. Frame, Jake Brake, 58,000 GVW



'85 FORD LT9000

Tandem Dump, 350 Cummins, Jake Brake, 16,000 Front, 44,000 Rear, Dbl. Frame, 58,000 GVW, 14 Ft. Steel Dump Body, Low Mi.



'85 FORD LN8000 C/C

3208 Cat, New Eng., 5/2 Trans., 33,000 GVW, Air Brakes, 222" Whlbs., PS, Excellent Condition