

Central & Southeast Virginia Livestock Summary

Blackstone-Southside, Va.
Wednesday, July 17, 1991

ALL TRENDS COMPARED TO LAST WEDNESDAY (SMITHFIELD NO REPORT THIS WEEK) SLAUGHTER CATTLE 39 HEAD - SLAUGHTER COWS 2.00-3.00 HIGHER. SLAUGHTER BULLS STEADY.

SLAUGHTER COWS 33 HEAD COWS CUTTER & BONING UT. 1-3 43.00 - 48.75 BREAKING UT. & COMM. 2-4 44.00 - 52.50 CANNER AND LOW CUTTER 1-2 38.50.

SLAUGHTER BULLS 6 HEAD BULLS Y.G. 1-2, 900-1300 LB. 56.75 - 66.00 Y.G. 1-2, 1300-1600 LB. 63.00 - 68.50.

LAMBS TOTAL RECEIPTS 76 HEAD - NO TRENDS REPORTED. SLAUGHTER LAMBS 29 HEAD SPRING CHOICE AND PRIME, 95-125 LB. 47.00 FEEDER LAMBS 47 HEAD FEEDER LAMBS CHOICE AND FANCY, 70-85 LB. 44.00 CHOICE AND FANCY, 60-70 LB. 44.00.

FEEDER CATTLE 208 HEAD - FEEDER STEERS, FEEDER HEIFERS AND FEEDER BULLS STEADY. STEERS MEDIUM 1 LARGE 1 SMALL 1 300-400 - 119.50 - 400-500 99.00-108.50 99.00-108.50 - 500-600 94.00-100.00 94.00-100.00 84.00- 87.00 600-700 86.00-93.00 86.00- 93.00 - HOLSTEIN STEER MED & LARGE 2 300- 500 89.00- 90.00.

HEIFERS MEDIUM 1 LARGE 1 SMALL 1 MED & LARGE 2 200-300 99.00-105.00 99.00-105.00 - - 300-400 93.00- 98.00 93.00- 98.00 88.50- 90.00 - 400-500 86.50- 94.00 86.50- 94.00 - 86.00- 87.50 500-600 87.00- 89.50 87.00- 89.50 83.50- 85.00 - 600-700 79.50 79.50 - -

BULLS MEDIUM 1 LARGE 1 SMALL 1 200-300 104.00-114.00 104.00-114.00 - 300-400 103.00-116.00 103.00-116.00 97.00-100.00 400-500 103.00-109.50 103.00-109.50 90.00- 94.00 500-600 89.00- 93.00 89.00- 93.00 - COWS RETURNED TO FARMS 30 HEAD - M-2, 6-10 YRS OLD 600-850 LBS \$45.00-58.00 PER CWT. COWS WITH CALVES AT SIDE 7 PAIR - M-1, 6-10 YRS OLD 850-1100 LBS WITH CALVES 70-200 LBS \$610.00-760.00; M-2, 6-10 YRS OLD 700-900 LBS WITH CALVES 110-180 LBS \$550.00-640.00 PER PAIR. BABY CALVES RETURNED TO FARMS 24 HEAD NEWBORN TO 4 WK OLD \$65.00-135.00 PER HEAD. OVER 100 LBS \$137.50-150.00 PER CWT.

New Wilmington Livestock Auction

N. Wilmington, Pa.
Monday, July 15, 1991
Report Supplied by PDA

CATTLE 198...PDA...Compared with last Monday's market: Slaughter cows mostly Standard 58.00-65.25; One Select Holstein 62.00. One Choice sl. heifer 67.00, few Select & low Choice 60.00-64.75, few Standard 52.00-57.50. Breaking Utility & Commercial sl. cows 49.50-52.75, one 54.00, low dressing down to 47.50, Cutter & Boning Utility 48.00-52.00, Canner & Low Cutter 39.00-48.50, Shells down to 24.00. Yield Grade No. 1, 1265/2215 lbs. sl. bulls 59.75-64.00, couple No. 2, 1370/1735 lbs. 59.00 & 59.25. Feeder Cattle: Few Medium Frame No. 1, 335/495 lbs. steers 88.00-105.00. Few Medium Frame No. 1, 470/550 lbs. heifers 76.00-79.50, few Medium 1-2, 590/845 lbs. 57.00-65.00, Large No. 2, 340/670 lbs. Holsteins

61.50-82.00. CALVES 241...80% of supply sold to return to the farm. Couple Choice vealers 110.00 & 120.00, Standard & Good 60/100 lbs. 50.00-70.00, lot Utility 55 lbs. 42.00. Farm Calves: Hol. Bulls No. 1, 85/140 lbs. 135.00-170, few 75/80 lbs. 100.00, #2, 85/120 lbs. 100.00-147.00; No. 1, Hol. Heifers 85/125 lbs. 100.00-157.50. Beef cross 70/140 lbs. bulls & heifers 125.00-215.00.

HOGS 285...Barrows and gilts: weak to .50 lower. US No. 1-2 235/255 lbs. barrows and gilts 53.50-54.60, 1-3 225/255 lbs. 52.00-54.00, small lot 2-4 270 lbs. 48.25, lot 1-3 220 lbs. 51.00. SOWS: Few US No. 1-3 305/675 lbs. sows 37.00-41.00, few 2-3 390/735 lbs. 36.00-38.00. Boars 34.00-37.00.

FEEDER PIGS 15...Few US No. 1-3 50/60 lbs. feeder pigs 34.00-36.00 --- all per head.

SHEEP 231...SPRING SLAUGHTER LAMBS...High Choice & Prime 85/100 lbs. spring slaughter lambs 65.00-72.50, lot 70 lbs. 77.50, Choice 60/100 lbs. 58.00-67.00, few 73.00; Good & Choice 70/105 lbs. 43.00-55.00; Good & Choice 35/75 lbs. feeder lambs 35.00-50.00. Slaughter sheep 7.00-23.00. - all cwt.

GOATS 11... One Large 42.00, Medium 20.00-34.00 --- all per head.

Lebanon Valley Livestock Auction

Fredericksburg, Pa.
Tuesday, July 16, 1991
Report Supplied by PDA

REPORT FOR JULY 16, 1991 NOT AVAILABLE ALTHOUGH HEADAGES ARE AS FOLLOWS: CATTLE 114; CALVES 236; HOGS 101; FEEDER PIGS 0; AND SHEEP 11.

Shenandoah Valley Livestock

Harrisonburg, Va.
July 13, 1991

Report supplied by auction
FEEDER CATTLE TREND: ALL CLASSES STEADY.

STEERS: M&L-1 300-500 LBS. 95.00-114.00; 500-700 LBS. 84.00-103.00; 700-1000 LBS. 72.00-87.00.

S-L & M&L-2: 300-500 LBS. 90.00-110.00; 500-700 LBS. 75.00-100.00; 700-1000 LBS. 70.00-74.00; HOLSTEIN 300-1000 LBS. 70.00-94.00.

FEEDER BULLS: M&L-1 300-500 LBS. 90.00-105.00; 500-700 LBS. 70.00-92.00; 700-800 LBS. 60.00-68.00.

HEIFERS: M&L-1 300-500 LBS. 85.00-100.00; 500-700 LBS. 80.00-88.00; 700-1000 LBS. 70.00-84.00.

STOCK COWS: BEEF, WITH CALVES BY SIDE 75.00-90.00; SPRINGERS 70.00-76.00.

SLAUGHTER CATTLE TREND: STEERS CHOICE 2-4 71.00-74.00, GOOD 2-3 66.00-71.00.

SLAUGHTER COWS TREND 1.00 LOWER: UTILITY AND COMMERCIAL 2-4 46.00-55.00; CANNERS AND CUTTERS 1-3 44.00-50.00.

SLAUGHTER BULLS: 1 & 2 59.75-61.50.

LAMBS: TREND STEADY; BLUE O HIGH CHOICE & PRIME 57.50; RED O CHOICE 50.00; FEEDER LAMBS CHOICE 49.00-50.00; SLAUGHTER EWES 11.00-15.00; HEAD EWES 20.00-28.00.

HOGS: US 1-3 200-240 LBS. SOWS 1-3 33.00-38.50; BOARS 33.00-34.00.

SLAUGHTER CALVES: GOOD & CHOICE 78.00-84.00.

Westminster Livestock Auction

Hagerstown, Md.
Tuesday, July 16, 1991
Report supplied by auction

SLAUGHTER COWS: 75 HD. \$1 LOWER. UTILITY 49.00-53.00, HIGH DRESSING TO 55.00, CANNERS 46.00-49.00, SHELLY 46.00 DOWN.

BULLS: NO YG #1 OFFERED, YG #2 1200-2200 LB \$58-61, STANDARD 55.00-58.00.

FED STEERS: LW CH 1000-1200 LB 70.00-72.75, SELECT 67.00-70.00, STANDARD 55.00-60.00.

FED HEIFERS: FEW OFFERED. CHOICE #4 1165 LB TO 63.25, 1 SELECT 945 LB AT 62.00.

VEAL CALVES: CHOICE 200-335 LB \$103-110.00, GOOD 85.00-98.00, CULLS 85-110 LB 75.00-90.00, 50-80 LB 65.00-75.00, WEAK/ROUGH 60.00 DOWN.

FARM CALVES: GOOD DEMAND! HOLSTEIN BULLS #1 90-120 LB \$160-190.00, #2 \$125-160.00, 75-85 LB \$105-150.00, HOLSTEIN HEIFERS 90-120 LB \$120-162.00, BEEF X BULLS \$150-207.00, HEIFERS \$120-170.00.

BUTCHER HOGS: 75 HD. PRICES STEADY. US #1&3 215-260 LB 52.00-53.00, 260-280 LB TO 49.00, 280-310 LB 41.00-44.00, #2&3 275-350 LB 33.00-40.00.

SOWS: 40 HD. \$1-3 LOWER. #1&3 300-600 LB 37.00-39.50, #2&3 35.00-37.00, THIN 35.00 DOWN.

BOARS: 15 HD. \$2 LOWER. 350-700 LB TO 36.50, THIN, FAT, ROUGH \$35 DOWN.

STOCK CATTLE: 120 HD. STEERS: 300-400 LB \$93-114.00, 400-600 LB 82.00-96.00, 700-850 LB 68.00-78.00, 850-1000 LB 64.00-73.00, HOLSTEINS 200-300 LB \$95-106.00, 300-400 LB 87.00-94.00, 900-1050 LB 57.00-64.00.

HEIFERS: 300-500 LB 75.00-91.00.

500-700 LB 67.00-77.00. BULLS: 300-500 LB 80.00-97.00, 500-700 LB 72.00-81.00, 700-950 LB 64.00-69.00.

LAMBS: 55 HD. CHOICE 80-110 LB 53.00-58.00, 60-80 LB 55.00-63.00, 40-60 LB 59.00-70.00, GOOD 60-100 LB \$49-54.00, YEARLINGS 40.00-45.00.

SHEEP: 40 HD. 12.00-20.00, SOME TO \$25.

GOATS: 67 HD. LARGE 60.00-93.00, MEDIUM 35.00-60.00, SMALL 20.00-40.00.

PIGS & SHOATS: 231 HD. STRONG DEMAND. PRICES \$3-5 HIGHER. BY THE HEAD 20-30 LB 25.00-35.00, 35-50 LB 36.00-51.00, 50-75 LB 40.00-67.00, 1 LOT AT 75.00, BY THE LB 90-125 LB 62.00-70.00.

STOCK BOARS: 12 HD. 200-260 LB 36.00-39.00, FEW TO 42.00.

Indiana Livestock

Homestead, PA
July 18, 1991

Report supplied by PDA

CATTLE 122. SL. COWS 50¢-75¢ LOWER; CHOICE FEW 70.00-71.75 L.D. TO 68.00; FEW H.Y. SEL. & CH. 71.00-75.00; FEW SELECT 62.00-70.00; H.Y. CH. 70.25-73.75, FEW L.D. TO 67.00; SEL. 63.75-67.75; STAND. 56.75-62.50; BREAKING UT. & COMMERCIAL SL. COWS FEW 51.00-52.75, L.D. TO 47.00; CUTTER & BON. UT. 48.25-52.50; CANNER & LO CUTTER 40.00-41.50; SHELLS DOWN TO 28.00; SEL. ONE 69.75; STAND. FEW 61.25-65.25; YIELD GRADE NO. 1 FEW 1190-1930 LBS. SL. BULLS 61.25-66.00, ONE 72.50.

FEEDER CATTLE: HEIFERS FEW M-1 340-485 LBS. 72.00-76.00.

CALVES 131. CHOICE FEW 98.00-105.00; GOOD FEW 87.50-94.00; STAND. & GD. 90-120 LBS. 70.00-90.00; 60-85 LBS. 60.00-78.00; FEW UT. 40-60 LBS. 30.00-50.00; NO. 1 HOLSTEIN BULLS 85-145 LBS. 130.00-193.00; NO. 2 80-120 LBS. 100.00-135.00; NO. 1 HOLSTEIN BULLS 70-80 LBS. 100.00-130.00; NO. 1 HOL. HEIFERS 90-135 LBS. 140.00-190.00; BEEF CROSS 70-125 LBS. BULLS & HEIFERS 112.50-200.00.

HOGS 172. BARROWS AND GILTS 1.50-2.00 HIGHER. US NO. 1-2 LOY 235 LBS. 55.00; 1-3 225-250 LBS. 54.00-55.00; 2-3 LOT 245 LBS. 53.25; 1-3 205-210 LBS. 51.50-52.75. SOWS: US NO. 1-3 365-520 LBS. 38.75-44.50. BOARS 31.00-42.00.

FEEDER PIGS 25. US NO. 1-3 LOT 30 LBS. 25.50.

SHEEP 80. CHOICE LOT 105 LBS. 52.00; GOOD/CH. 35-85 LBS. FEEDER LAMBS 40.00-46.00; SLAUGHTER SHEEP 7.50-18.00; FEW YRLGS. 25.00-42.50.

GOATS 7. ONE LARGE 36.00; MED. 24.00-33.00.

Jersey Shore Livestock Market, Inc.

Auction every Thursday at 4:00 p.m.

Jersey Shore, Pa.

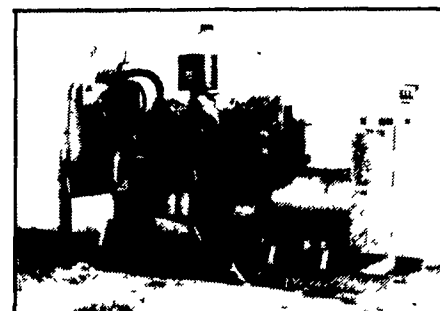
Report supplied by Auction

Thursday, July 18, 1991

RETURN TO FARM CALF 1.50-2.00 GOOD VEAL: 100.00-149.00. COMMON VEAL 40.00-99.00. CHOICE STEERS 72.00-74.50 SELECT STEERS 65.00-71.00 COMMERCIAL COWS 48.00-54.00 CANNERS-CUTTERS 45.00-53.00. SHELLS 37.00-44.00. SELECT HEIFERS 63.00-66.00. COMMON HEIFERS 51.00-62.00 COMMON FEEDERS 40.00-70.00 BULLS 55.00-65.00 GOOD HOGS 50.00-52.25.

MARTIN ELECTRIC PLANTS

Generator Systems Manual or Automatic With Service You Can Trust



GENERATOR SETS FOR SALE

- ** NEW **
- 25 KW Isuzu Diesel
- 25-180 KW John Deere
- 12-60 KW PTO Generators
- ** USED **
- 25 KW Onan PTO Brushless
- 100 KW Murphy Diesel
- 60 KW Isuzu Diesel
- 100 KW 12V71N Detroit

RD #2 Box 28 Pleasant Valley Rd., Ephrata, PA 17522
Tel: 717-733-7968 Fax: 717-733-1981

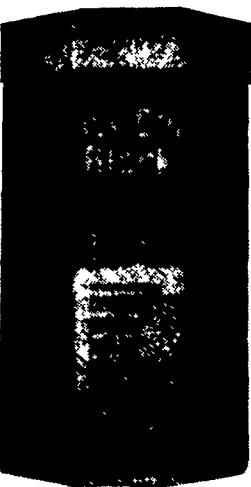
HESS MILLS

ARE YOUR PASTURES GETTING LOW?

If so, **HESS MILLS** has the solution for your dry cows and heifers...

EASY CARE BLOCKS

Improved Breeding And Milk Production Through:



- Balanced to the nutrient requirements of dry cows and heifers
- Convenient and easy to feed, especially those hard to reach pastures.
- Two Sizes 50 lbs. and 500 lbs.
- Weatherproof for minimal waste.

- Vitamin and mineral requirements are supplied, including vitamins A and D, selenium and magnesium.

Please call us for additional information:

HESS MILLS



PURINA CHOWS

6 S. Vintage Rd.
Paradise, PA 17562
(717) 442-4183
(717) 768-3301

Rt. 82
Unionville, PA 18375
(215) 347-2377

* Registered trademark of Ralston Purina Company