

## Southwest Virginia Livestock Summary

Wytheville, Va.

Tuesday, July 16, 1991

ALL TRENDS REPORTED TO LAST TUESDAY SLAUGHTER HOGS 11 HEAD - NO TRENDS REPORTED. BARROWS AND GILTS US 1-3, 200-250 LB. 50.00 SOWS US 1-3, 500 LBS. & OVER 40.00 BOARS 300-600 LB. 33.00.

SLAUGHTER CATTLE 64 HEAD - NO TRENDS REPORTED.

SLAUGHTER COWS 57 HEAD COWS CUTTER & BONING UT. 1-3 45.00 - 51.00 BREAKING UT. & COMM. 2-4 46.00 - 52.50 CANNER AND LOW CUTTER 1-2 39.00 - 45.00.

SLAUGHTER BULLS 7 HEAD BULLS Y.G. 1-2, 1300-1600 LB. 61.00 - 63.00 Y.G. 1-2, 1600LBS. & OVER 59.50 - 66.25.

LAMBS TOTAL RECEIPTS 240 HEAD - NO TRENDS REPORTED. SLAUGHTER LAMBS 80 HEAD SPRING CHOICE AND PRIME, 95-125 LB 54.00 CHOICE, 85-125 LB. 49.75 FEEDER LAMBS 122 HEAD FEEDER LAMBS CHOICE AND FANCY, 70-85 LB 49.00 CHOICE AND FANCY, 60-70 LB. 42.00 EWES & RAMS 38 HEAD EWES ALL GRADES 13.00 RAMS ALL GRADES 14.50 21 HEAD GOATS \$10.00-45.00 PER HEAD.

FEEDER CATTLE 135 HEAD - NO TRENDS REPORTED STEERS MEDIUM 1 LARGE 1 SMALL 1 MED & LARGE 2 300-400 - - - 87.00- 93.00 400-500 92.00- 97.00 - - - 84.00- 85.00 500-600 91.00- 98.00 95.00-103.00 87.00 85.00- 90.00 600-700 90.00- 99.00 - - - 700-800 88.00- 91.00 - - - 82.00 HOLSTEIN STEER MED & LARGE 2 300- 500 85.00- 95.00 500- 700 68.00- 75.00 700- 900 70.50

HEIFERS MEDIUM 1 LARGE 1 SMALL 1 MED & LARGE 2 300-400 85.00- 91.00 95.00- 96.00 - - - 400-500 - - - 80.00- 83.00 500-600 - - - 81.00 79.00- 80.00 600-700 80.00- 85.00 - - - 700-800 80.00- 82.00 - - - BULLS MEDIUM 1 300-400 85.00- 91.00 400- 500 86.00- 90.00 COWS RETURNED TO FARMS 5 HEAD: M&L-1, 5-8 YRS OLD 950-1150 LBS \$550.00-610.00 PER HEAD. COWS WITH CALVES AT SIDE 4 PAIR; M-2, 5-9 YRS OLD 925-1050 LBS WITH CALVES 100-275 LBS \$570.00-640.00 PER PAIR. BABY CALVES RETURNED TO FARMS 20 HEAD NEWBORN TO 4 WK OLD \$90.00-190.00 MOSTLY \$100.00-165.00

## Philadelphia Fruit Market

Philadelphia, Pa.

Thursday, July 18, 1991

GRAPEFRUIT LOWER FL 4/5 buctn Indian River Red fair qual 23s 7.00 fair cond 4.00-5.00 27s 6.00-7.00 fair cond 4.00-5.00 32-40s 8.00 White 27-36s 7.00 CA ctn Red 40s 10.00.

LEMONS ABOUT STEADY CA ctn 115s 35.00 140s 30.00 165s 29.00-30.00 200s 25.00 fair qual 95s 19.00-25.00 115s 25.00 140s 26.00 165s 26.00-27.00 200s 21.00-23.00 235s 13.50 ord qual 115s 20.00-21.00 140s 21.00 165s 20.00 200s 13.50 BAHAMA 4/5 buctn 75-95s 23.00 fair qual 75s 20.00 95-115s 22.00 140s 20.00-22.00 165s 20.00 200s 18.00 SPAIN crt fair qual 70s fair cond 5.00-6.00.

LIMES SLIGHTLY HIGHER 10-lb ctn Persian Seedless type FL 42s 3.50 48-54s 3.50-4.00 63s 3.00-4.00.

MISCELLANEOUS CITRUS OFFERINGS INSUFFICIENT TO QUOTE.

ORANGES STEADY CA ctn Valencia fair qual 48s 22.00 56s 16.00-22.00 mos 16.00 some 15.00 72s 18.00-18.50 88s 15.00-18.00 MOROCCO 15-kilo ctn Valencia 64s fair cond 5.00-6.00 75s ord cond 2.00-5.00 88s fair qual 5.00-8.00 113s 11.00-12.00 SPAIN 15-kilo ctn 48s fair cond 8.00-10.00.

TANGELOS NO OFFERINGS. TANGERINES NO OFFERINGS. TEMPLES NO OFFERINGS.

APPLES ABOUT STEADY CONTROLLED ATMOSPHERE STORAGE WA Red Delicious WAExFcy 80s 23.00 88s 23.00-24.00 100s 23.00 USEx Fcy 72s 21.00 80s 19.00-21.00 88s 19.00-21.50 mos 21.00 100s 18.00-20.00 mos 19.00 113s 16.50-17.00 125-138s 17.00 WAFcy 138s 14.00 USFcy 100s 16.50-18.00 113-125s 15.50 Golden Delicious WAExFcy 88s 25.00 USEx Fcy 80s 23.00 88s 20.00-23.00 100s 18.50-21.00 113s 16.50- 17.00 WAFcy 100s 18.00 113s 15.00 ctn 12-3 lb film bags WA WAExFcy 2-1/4" min Red Delicious 15.50 NEW CROP ctn tray pack NEW ZEALAND Granny Smith 88s 29.00-32.00 100s 28.00-32.00 Fuji 88s 45.00 ARGENTINA Granny Smith 90s 23.00.

APPLE-PEARS NO OFFERINGS. APRICOTS LOWER CA 24-lb lug Tilton 8 sz 15.00-16.00 10 sz 13.00-14.00 12 sz 11.00-12.00 Patterson 10 sz fair cond 8.00-10.00 WA 2-lyr lug WA#1 Goldrich 56s 10.00 60-80s 5.00-7.00.

AVOCADOS CA HIGHER, FL LOWER CA 2-lyr ctn Hass 48s 28.00 FL flat ctn

various Greenskin varieties 8s 7.00-8.00 ord cond 2.00-3.00 9s 7.00-8.00 12-14s ord cond 2.00-3.00.

BANANAS Imports ctn approx 40-lb 11.50 fair qual 9.50-10.00 film wrpd 11.50 Institutional pack Petite 150s 12.00. BLACKBERRIES OFFERINGS INSUF TO QUOTE.

BLUEBERRIES LOWER NJ flats 12-1 pt film wrpd cups lge 9.00-10.00 mos 10.00 some 8.00 med 8.00

CHERRIES ABOUT STEADY WA 20-lb lug WA #1 Bing 9-1/2 row sz & lgr 33.00 some hias 40.00 10-1/2 row sz & lgr 25.00 fair cond 18.00-20.00 11-1/2 row sz & lgr 22.00 ord cond 10.00 12 row sz & lgr ord cond 10.00-12.00 Lambier 11-1/2 row sz & lgr fair cond 13.00-14.00 12 row sz & lgr fair cond 10.00-11.00 Rainier no sz or graded marked 40.00 UT 20-lb lug Bing 11-1/2 row sz & lgr 30.00.

COCONUTS DOMINICAN REPUBLIC sacks 40s few 14.00.

CRANBERRIES NO OFFERINGS. FIGS OFFERINGS INSUFFICIENT TO QUOTE.

GRAPES-TABLE ABOUT STEADY CA 22-lb lug Thompson Seedless fair cond 10.00-12.00 mos 12.00 Perlette 18.00 Flame Seedless 12.00-15.00 Black Seedless fair cond 14.00-15.00 Exotic 12.00-14.00 AZ 22-lb lug Thompson Seedless fair cond 10.00-12.00 film bags Flame Seedless fair cond 10.00-12.00 MEXICO 22-lb lug Thompson Seedless fair cond 10.00-12.00 ord cond 6.00-8.00 poor cond 5.00-11.00 Flame Seedless 12.00 Exotic ord cond 6.00 Cardinal fair cond 3.00-6.00 18-lb lug film bags Thompson Seedless fair cond 9.00 Perlette sml fair qual 5.00-6.00.

KIWI FRUIT ABOUT STEADY NEW ZEALAND 1-lyr flat 36s 7.50-8.00 39s 8.00.

MANGOS HIGHER MEXICO flat ctn Tommy Atkins 6-16s 5-5.50 Kent 10-12s 5.50-6.00.

NECTARINES LOWER CA 25-lb ctn Red Diamond 60 sz 13.00 70-72 sz 12.50-13.00 80 sz 12.00 Firebrite 50 sz 11.50 60 sz 13.00 70 sz 12.50 Sungrand 56 sz 14.00 64 sz 14.00 70 sz 12.00-12.50.

PAPAYAS OFFERINGS INSUF TO QUOTE.

PEACHES LOWER 3/4 buct & ctn US#1 Extra unless otherwise stated SC Red Globe 2-1/2" & up 15.00-16.00 2-1/4" & up 13.00 2-1/4 - 2-1/2" 10.00-11.00 NJ Red Haven 2-1/4" & up 14.00 no grade or variety marked fair qual 2-1/8" 8.00 2" 6.00 CA 2-lyr ctn Flavorcrest 5.00-42s 9.00-10.00 Red Top 48-50s 8.00-10.00 56s 6.00-8.00 1-lyr Babcock 32s 8.00.

Lancaster Farming, Saturday, July 20, 1991-A15

## Four States Livestock

Hagerstown, Md.

Wednesday, July 17, 1991  
Report supplied by Auction

SLAUGHTER: COWS: \$1-2 HIGHER. UTILITY 50.00-55.00, HIGH DRESSING TO 57.00, 2 HD. 59.00-61.00, CANNERS 46.00-50.00, SHELLY 46.00 DOWN.

BULLS: YG#1 2335 LB. AT \$64, FEW 1300-1700 LB. 59.00-63.00.

FED STEERS: NO H CH. OFFERED. 1 CH. 1600 LB. AT 68.25, SELECT 1100-1300 LB. \$64-68.50, CHOICE HOLSTEINS TO 63.50

FED HEIFERS: NO SELECT OR CHOICE, HOLSTEINS \$53-59.

VEAL CALVES: CHOICE 200-300 LB. \$106-110, GOOD 90.00-97.00. CULLS 85-110 LB. 75.00-90.00, 50-80 LB. 65.00-75.00. WEAK/ROUGH/THIN 60.00 DOWN.

FARM CALVES: HOLSTEIN BULLS #1 90-125 LB. \$170-190, #2 \$135-165, 75-85 LB \$110-145. HOLSTEIN HEIFERS 95-120 LB. 170.00-182.00, BEEF X BULLS \$170-220, HEIFERS TO \$160.

BUTCHER HOGS NONE. SOWS 300-600 LB \$37-40.50. BOARS 550 LB. TO \$36.

STOCK CATTLE. STEERS: STRONG DEMAND. 400-600 LB. \$79-93, 700-900 LB. \$66-73.

HEIFERS: 300-500 LB \$78-92, FEW TO \$98, 500-700 LB. \$70-85.

BULLS. 200-300 LB \$110-118, 1 AT \$130, 300-500 LB. \$95-107, 500-700 LB \$75-93, 700-900 LB. \$60-65, DAIRY REPLACEMENTS FEW OFFERED, SPRINGERS \$700-860, FRESH TO \$725, HOL HEIFERS BY THE LB 200-400 LB \$83-104, 2 SHORT BREDS 1000 LB. TO 61.50.

SHEEP: \$18-20, 2 PUREBREDS TO \$29, LAMBS 40-60 LB. \$50-54.

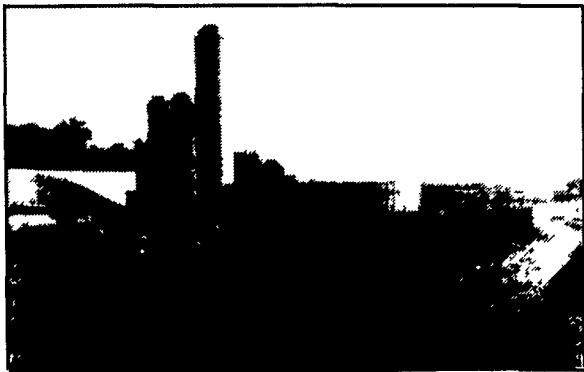
GOATS: 1 LARGE BILLY TO \$110, FEW MEDIUM TO \$40.

PIGS & SHOATS: BY THE HD. 20-35 LB. \$30-37, 35-50 LB. \$35-40, 50-65 LB. \$40-48. BY THE LB. 90-130 LB. \$49-51, 160-180 LB. \$46-48, ST. BOARS 160-220 LB. \$38-41.

**MILK**  
**AMERICA'S HEALTH KICK**

# POURED SOLID CONCRETE STORAGE SYSTEMS

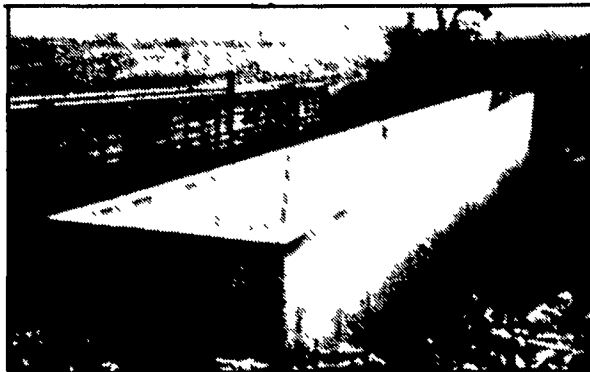
17 Years Experience In Pouring Concrete Manure Pits!



Above-Ground Liquid Manure Tank For Dairy Operation - 235,000 Gal.

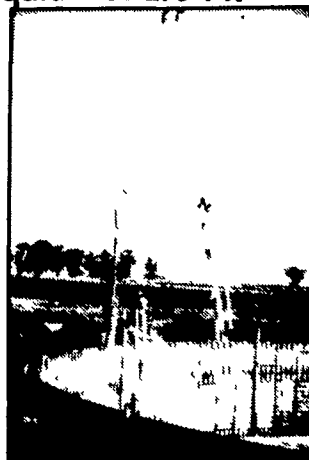


In-Ground Liquid Manure Tank For Hog Operation - 324,000 Gal.

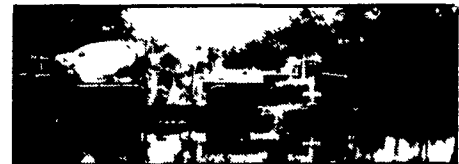


Hog House-Liquid Manure Pit

Construction Of In-Ground Liquid Manure Tank- 425,000 Gallons.



## CONCRETE PUMPING SERVICE AVAILABLE



Mixer And Boom Trucks



92' Boom Placing Concrete



Placing Concrete On Site

Take the questions out of your new construction. Call Balmer Bros. for quality engineered walls.

All sizes available round or rectangular

Invest in Quality - It will last a lifetime.

**Balmer Bros.**

CONCRETE WORK, INC.

243 Miller Road Akron, PA 17501

(717) 733-0353  
6:30 AM - 3:30 PM

(717) 859-2074  
After 6:00 PM