

Dauphin Co. DHIA

dhia Monthly Report

Pennsylvania Dairy Herd Improvement Association

May, 1991
Rolling Herd Average

| Owner | Brd. | No. Cows | Lbs. Milk | Lbs. Fat | Lbs. Protein |
|-----------------------|------|----------|-----------|----------|--------------|
| Toby T Farm | B3 | 51.1 | 21,281 | 742 | 689 |
| Catalpa Farms | 3 | 132.0 | 21,809 | 759 | 688 |
| Restful Acres | 3 | 119.1 | 21,524 | 820 | 673 |
| Pleasant Hill Farm | B3 | 73.9 | 20,662 | 711 | 661 |
| Alwine Farms | 3 | 82.2 | 20,109 | 763 | 657 |
| My-Favorite Hols | 3 | 55.1 | 20,360 | 702 | 652 |
| Crissinger Dairy Farm | B3 | 88.8 | 19,839 | 756 | 636 |
| John Hertzler | 3 | 66.3 | 19,051 | 742 | 629 |
| Dale F Faust | B3 | 52.9 | 19,733 | 666 | 620 |
| Stevie E Fisher | B3 | 42.9 | 20,159 | 725 | 620 |
| Stoney Lawn Farms | B3 | 98.9 | 19,460 | 665 | 617 |
| Lytte Farms Inc | 3 | 93.2 | 19,665 | 704 | 616 |
| Stanley R Long | B3 | 126.6 | 19,852 | 731 | 615 |
| Great View Farm | B3 | 33.1 | 19,172 | 663 | 613 |
| Elwillo Farms | B3 | 186.0 | 19,619 | 707 | 612 |
| Irvin G Martin | G3 | 37.3 | 19,608 | 710 | 605 |
| J Melvin Brandt | B3 | 80.5 | 18,985 | 734 | 601 |
| Jacob P King | G3 | 40.8 | 18,974 | 680 | 598 |
| Hill Side Farm | B3 | 46.2 | 18,987 | 655 | 588 |
| Mahlon L Lehman | 3 | 56.2 | 18,025 | 659 | 582 |
| Wil-Lene Farms | G3 | 79.7 | 17,489 | 637 | 575 |
| Christian K King | B3 | 35.8 | 18,419 | 653 | 574 |

Lactation Records

| | | | | | | |
|---------------------|--------|---|------|--------|-----|-----|
| Stoney Lawn Farms | Wyleen | 3 | 3-6 | 25,730 | 798 | 863 |
| Lytte Farms Inc | Ginny | 3 | 3-10 | 22,208 | 744 | 790 |
| Pleasant Hill Farms | Connie | 3 | 6-0 | 23,388 | 776 | 887 |
| | Carly | 3 | 3-10 | 23,673 | 762 | 784 |
| Alwine Farms | Adelle | 3 | 4-0 | 20,104 | 682 | 870 |
| | Ann | 3 | 3-5 | 23,436 | 797 | 783 |
| Catalpa Farms | 594 | 3 | 4-2 | 26,392 | 775 | 811 |
| | 597 | 3 | 4-1 | 26,542 | 797 | 856 |
| | 606 | 3 | 3-11 | 24,047 | 728 | 779 |
| | 568 | 3 | 4-9 | 23,424 | 724 | 669 |
| | 617 | 3 | 3-9 | 26,193 | 748 | 812 |
| | 669 | 3 | 2-11 | 22,411 | 766 | 948 |

| Restful Acres | | | | | |
|------------------|---|------|--------|-----|------|
| *Mar | 3 | 4-0 | 23,544 | 759 | 886 |
| Bite | 3 | 3-1 | 22,225 | 727 | 992 |
| Mart | 3 | 1-11 | 20,095 | 625 | 880 |
| Bingo | 3 | 2-0 | 22,086 | 717 | 819 |
| Toby T Farm | | | | | |
| Sonnet | 3 | 3-7 | 19,923 | 706 | 823 |
| My-Favorite Hols | | | | | |
| Bethena | 3 | 8-5 | 23,542 | 712 | 842 |
| Elwillo Farms | | | | | |
| 259 | 3 | 3-5 | 24,562 | 810 | 957 |
| 16 | 3 | 3-7 | 26,543 | 837 | 1010 |
| Dale F Faust | | | | | |
| 130 | 3 | 2-11 | 23,666 | 741 | 727 |

York Co. DHIA

dhia Monthly Report

Pennsylvania Dairy Herd Improvement Association

May 1991
Rolling Herd Averages

| Name | Breed | No. Cows | % Days In Milk | Milk Lbs. | Fat Lbs. | Protein Lbs. |
|-----------------------|-------|----------|----------------|-----------|----------|--------------|
| Smysers Richlawn Fms | 3 | 77.2 | 86.5 | 26,164 | 857 | 803 |
| Lynn Wolf | 3 | 85.1 | 89.2 | 25,288 | 849 | 790 |
| HS & RE Fetrow | 3 | 87.1 | 87.5 | 23,477 | 793 | 745 |
| Sinking Spring Fm Inc | 3 | 68.5 | 87.5 | 22,392 | 834 | 703 |
| Jim & Holly McCaffree | 3 | 58.6 | 86.9 | 22,493 | 790 | 702 |
| Leonard Greek | B3 | 48.6 | 89.2 | 21,712 | 746 | 694 |
| Edwin L Calhoun | B3 | 53.8 | 86.9 | 21,843 | 801 | 687 |
| Thomas A Boyer | 3 | 43.6 | 84.2 | 21,375 | 792 | 677 |
| Woodbine Farms | 3 | 157.0 | 88.0 | 20,520 | 740 | 665 |
| Melvin R Lehr | B3 | 50.0 | 85.0 | 21,075 | 761 | 660 |
| Wayne E Myers | 3 | 51.6 | 84.8 | 21,256 | 746 | 653 |

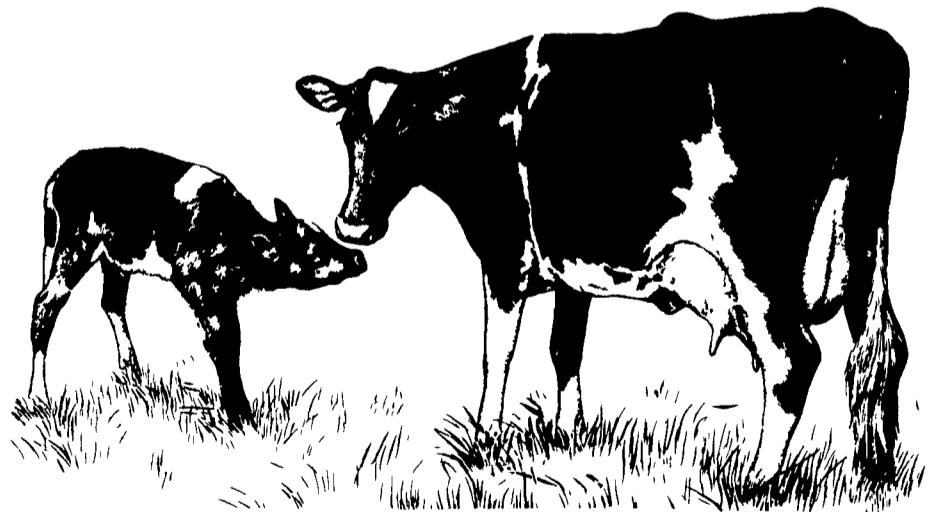
| | | | | | | |
|-----------------------|----|-------|------|--------|-----|-----|
| Ramsey S Cooper Jr. | 3 | 68.3 | 86.3 | 21,204 | 804 | 649 |
| B Robert Charles | 3 | 45.4 | 87.1 | 20,729 | 740 | 644 |
| Walk Le Holsteins | B3 | 72.3 | 84.2 | 20,417 | 621 | 642 |
| Smokey Hollow Farms | G3 | 51.7 | 90.1 | 20,926 | 710 | 641 |
| William Myers | B3 | 51.0 | 85.4 | 19,909 | 714 | 637 |
| Beshore Farms | 3 | 45.0 | 83.6 | 19,497 | 764 | 629 |
| Applehurst Farms | B3 | 29.4 | 86.7 | 20,129 | 702 | 625 |
| Walnut Hill Farm | B8 | 55.9 | 85.7 | 19,441 | 684 | 620 |
| David Gemmill | B3 | 91.9 | 88.2 | 19,458 | 719 | 618 |
| Leaspring Farm | 3 | 62.2 | 85.5 | 19,818 | 697 | 617 |
| Dale & Darla Doll | 3 | 88.6 | 86.4 | 19,432 | 650 | 616 |
| RR & MR Stewart | 3 | 60.8 | 87.0 | 18,855 | 659 | 611 |
| Gary W Thoman | 3 | 54.1 | 84.2 | 19,585 | 689 | 608 |
| Dennis J Myers | 3 | 46.1 | 90.5 | 19,615 | 617 | 607 |
| George Innerst & Sons | B3 | 117.5 | 88.0 | 19,115 | 655 | 606 |
| Rutters | 3 | 20.3 | 82.8 | 18,665 | 746 | 600 |
| Melvin & Barb Marks | 3 | 52.7 | 84.7 | 18,744 | 664 | 599 |
| Horace E Heindel | 3 | 166.8 | 90.4 | 18,003 | 652 | 595 |
| Dale E Ranck | 3 | 39.3 | 89.4 | 18,679 | 668 | 595 |
| Stump Acres | 3 | 100.1 | 85.7 | 17,595 | 714 | 594 |
| Leroy Bupp | 3 | 115.4 | 83.8 | 18,121 | 569 | 586 |
| Earl Fuhrman | 3 | 95.6 | 84.6 | 19,151 | 675 | 585 |
| Elvin R Deiter | G3 | 58.5 | 83.9 | 18,299 | 666 | 577 |
| Wayshar Farm | B8 | 76.2 | 84.6 | 17,833 | 640 | 572 |
| John P Bortner | B3 | 16.4 | 90.9 | 17,939 | 611 | 570 |
| Eisenhart Bros. | G8 | 92.5 | 88.8 | 16,937 | 621 | 566 |
| Howard G Taylor | B3 | 71.1 | 86.8 | 17,164 | 628 | 564 |
| Gum Tree Farm | 3 | 61.0 | 87.6 | 18,234 | 674 | 564 |
| Myron R Pomraning | B3 | 48.2 | 88.8 | 17,671 | 620 | 563 |
| Keith A Shaffer | 3 | 43.1 | 87.4 | 18,134 | 632 | 562 |
| Ted+Dianne Haberland | 3 | 75.6 | 82.5 | 17,059 | 604 | 561 |
| Kevin S Holtzinger | B3 | 264.7 | 85.4 | 17,645 | 644 | 560 |

MILK. IT DOES A BODY GOOD.™



ARE BACK!

Announcing Farm-Tech Service Inc. is the new distributor for Impro® Animal Health Products, now available at a lower price!!



- complete line of animal health products
- affordable prices
- Lab culturing available
- no antibiotic residue
- the knowledge to set up effective care programs

Dealerships Available

Call (717) 367-3034 or (717) 653-9670



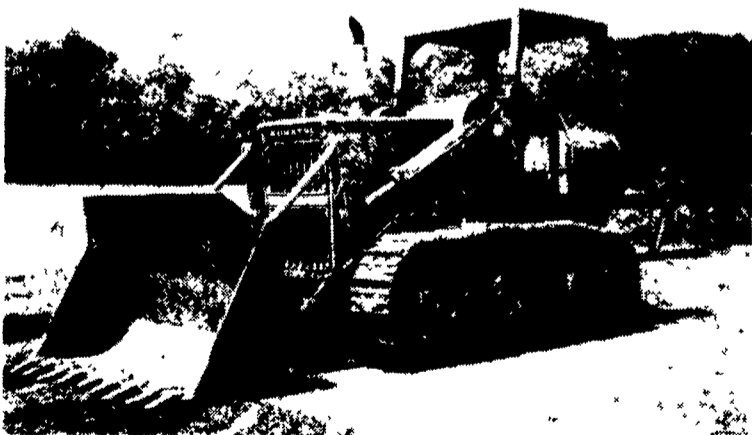
FARM TECH SERVICE, INC.

365 W. Bainbridge St.
Elizabethtown, PA 17022

- Serving The Farm Community Since 1983 -

FARM DRAINAGE and SOIL CONSERVATION

We Specialize In Soil Conservation And Land Improvement Work



NOW AVAILABLE...

LARGE TRACK LOADER w/BUCKET CAPACITY OVER 3 YARDS

We're Equipped With:
Dozers, Pans And Excavators to Handle Any Excavating Jobs, Such As Terraces, Waterways, Diversions, Ponds, Etc.



COCALICO EQUIPMENT CO.

Farm Drainage & Excavating
323 Reinholds Rd. Denver, PA 17517
(215) 267-3808 (717) 738-3794

