

More Than 180 Exhibit At N.W. Keystone

MEADVILLE (Crawford Co.)
— More than 180 exhibitors participated in the 1991 Northwest Pennsylvania Keystone Junior Beef Classic at the Crawford County Fairgrounds recently, with 232 head of cattle being exhibited.

Following the judging contest, 125 contestants competed in the showmanship contest. Division winners were as follows:

Champion Division I Showmanship (9 & under) - Alicia Bodnar, Jefferson, OH.
Champion Division II Showmanship (10-11 yrs.) - Kyle Rooker, Uniontown, PA

Champion Division III Showmanship (12-13 yrs.) - Ben T. Cross, Kennerdell, PA.
Champion Division IV Showmanship (14-15) - Dennis Willard, Jr., Smithsburg, MD.
Champion Division V Showmanship (16-17) - Bryan Dean, New Castle, PA.
Champion Division VI Showmanship (18 & over) - Marianne Neel, Pleasantville, OH

Results of the type judging on Sunday were as follows:

Angus
Champion Angus Female - shown by John Walker, Worthington, PA - 2 yr old - WAF Dixie Queen W93.
Reserve Champion Angus Female - Bryan Dean, New Castle - Late Junior Yearling - BRD Black Velvet 001.
Bred & Owned Trophy Winner - John Walker - Junior Heifer Calf - Precious Queen

Beil
Champion Angus Steer - Robert Liposky, Volant, PA.
Reserve Champion Angus Steer - Greg Patterson, Slippery Rock.
PA Polled Hereford
Champion Polled Hereford Female - Tawnya S. Wolfhope, Schellsburg, PA - 3 yr. old - MRF Miss Awesome 102.
Reserve Champion Polled Hereford Female - Lynne D. Wise, New Philadelphia, OH - Early Junior Yearling - REW Fancy Knight II.
Bred & Owned Trophy Winner - Tawnya Wolfhope - MRF Miss Awesome 102.
Champion Polled Hereford Steer - Lynne D. Wise, New Philadelphia, OH.
Reserve Champion Polled Hereford Steer - Dennis L. Willard, Jr., Smithsburg, MD.

Shorthorn
Champion Shorthorn Female - JoAnn Hively, New Waterford, OH - Late Junior Yearling - HHP Cover Girl CH33.
Reserve Champion Shorthorn Female - Steve Balzer, Newton Falls, OH - 2 yr. old - Sutherland Jud 121.
Bred & Owned - Paul Schneider, Butler, PA - April Late Junior Yearling - WBF Pays 5th Ave. Susie E7.
Champion Shorthorn Steer - Bart D. Oland, Gaithersburg, MD.
Reserve Champion Shorthorn Steer - Dennis L. Willard, Jr., Smithsburg, MD.
Limousin
Champion Limousin Female - Jonathan Lori, Scottsdale, PA - 2 yr. old - Miss Flintoff JYF22Y.
Reserve Champion Limousin Female - Jessica Stover, Titusville, PA - Early Junior Yearling - Justa Dakota DJFS 0000Y-NPF-757545.
Bred & Owned Trophy - Jessica Stover, Titusville, PA - Justa Dakota DJFS.
Chianina
Champion Chianina Female - Jennifer Stocker, Warren, OH - Early Senior Yearling - Lady 33Y.
Reserve Champion Chianina Female - Jonathan Birney, Tallmadge, OH - Late Junior Yearling - JS(Polled PWR 7462 Bred & Owned - None.
Simmental
Champion Simmental Female - Jeremy and Jared Hay, Berlin, PA - Early Summer Yearling Highmanor Candice.
Reserve Champion Simmental Female - David Balzer, Newton Falls, OH - Phalanx Drifter 37Z.
Bred & Owned - Jeremy and Jared Hay (Champion Female) - Highmanor Candice

Charolais
Champion Charolais Female - Billy Bates, Waynesburg, PA - Senior Heifer Calf - RCC Miss Bee Bee 6270.
Champion Sakers Female - Courtney Peterson, Cochran, PA - Late Summer Yearling - Kimber Le ADWIZ.
Reserve Champion Sakers Female - Gregory Blystone, Cambridge Springs, PA - Late Junior Yearling - LLF Miss Lady 15Z.
Non-Registered and Other Breeds
Champion Non-Registered/Other Breeds Female - Mike Enzor, Tallmadge, OH - Early Summer Yearling - Maine Anjou.
Reserve Champion Non-Registered/Other Breeds Female - Jeremy Hay, Berlin, PA - Senior Heifer Calf - MHF Candace 1212 (Simmental).
Bred & Owned - Stephanie Gaub, Titusville, PA - 2 yr. old - Jobina Marie 3.
Crossbred Steers
Champion Division I Steer - Alicia Bodnar, Jefferson, OH.
Reserve Champion Division I Steer - Curt Stockdale, Dayton, PA.
Champion Division II Steer - Shan DeLks, Fountain City, IN.
Reserve Champion Division II Steer - Lynne D. Wise, New Philadelphia, OH.
Champion Division III Steer - Tom Drott, Bethel, OH.
Reserve Champion Division III Steer - Lynne D. Wise, New Philadelphia, PA.
Supreme Champion Steer - Tom Drott.
Reserve Supreme Champion Steer - Shan DeLks.
Champion Choice Plus Steer - Charles Hawkins, Kittanning, PA.
Reserve Champion Choice Plus Steer - Chanda Reitz, Franklin, PA.
John Vidovich III of Midland, Pa was awarded the Junior Herdsman.

Breeders Affect Young Stock Performance

Kenneth Goodwin

Breeding birds can affect the performance of the young stock in a variety of ways.

Both the male and the female parent contribute to the genetic composition of the progeny. How this factor affects the performance of the young stock will of course depend on the genetic status of the breeders. If a genetic selection program has produced genetically superior breeding stock, this superiority will be transmitted to the progeny.

In addition, the female parent can affect the progeny performance in two other special ways.

If the mother is herself inbred, it is likely that traits such as hatchability and early livability will be adversely affected. The evidence of this is especially strong in mammalian species which have to support a gestation period and nurse

the young. In general, inbred females do not make good mothers.

Other traits, called maternal effects, are those for which there is a known effect of the female parent transmitted through the egg although not on the genes. Examples would be pathogenic organisms and/or antibodies against pathogens. When these are transmitted to the progeny from the breeder hen they can have a major effect on performance of the progeny.

Another example of a maternal effect is egg size, which has been shown to have a strong relationship to the size of the chick at hatching and to later growth rate.

For the breeder, maximizing progeny performance involves:

- Where appropriate, carry out a genetic selection program.
- Unless you have some very

good reason to do otherwise, avoid inbreeding in your breeders.

• Provide a management program which will minimize the likelihood that pathogens will be egg-borne, and maximize the likelihood that desirable effects (e.g., passive immunity, good egg size, etc.) will be transmitted to the progeny.

MILK. IT DOES A BODY GOOD.
MIDDLE ATLANTIC MILK MARKETING ASSOCIATION, INC

Need Your Farm Buildings Painted?

Let us give you a price!
Write: Daniel's Painting

637-A Georgetown Rd.
Ronks, PA 17572
(or leave message)

(717) 687-8262

Spray on and
Brush in Painting

SALE - SALE
KANGAROO® SNEAKERS 20%
And
GEORGIA WORK SHOES 10% OFF
OUR ALREADY LOW PRICES

Also 2nd Floor Truck Load
Shoes & Sneakers
\$2.00 Pair

LEACOCK SHOE STORE

64 Old Leacock Rd., Ronks, PA

(717) 768-7440

Closed Memorial Day, May 27
M,W, Th 8-5 • T-F 8-8 • Sat. 8-4

WAREHOUSE CLEARANCE SALE

NATURAL GRAIN
DRYING

FEED BINS

AUGERS

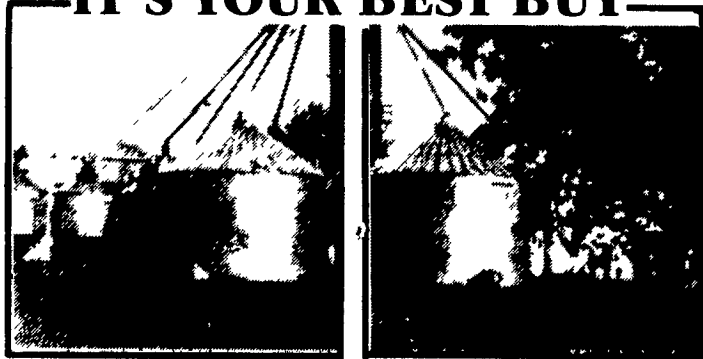
FLOORS



DRYING
FANS AND
HEATERS

WET TANKS

IT'S YOUR BEST BUY



- 1 - New GSI 36' Dia. x 7 Ring 18,522 Bu. Storage Bin..... \$6,377
- 1 - Used GSI 46 Ton Soymeal Tank w/Agitator, Motor, Ladder & Fill Kit (Assembled)..... \$3,750
- 1 - Used GSI 24 Ton Feed Tank w/Ladder & Fill Kit (Assembled)..... \$1,500
- 1 - Used 10 Ton Welded Feed Tank w/Ladder..... \$475
- 1 - Used Welded Limestone Tank, 2-30 Ton Compartments w/Ladder & Boots

GET THE BEST FROM:



automatic farm systems

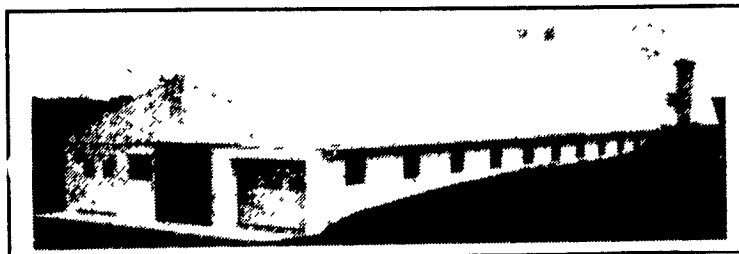
608 Evergreen Rd., Lebanon, PA 17042

(717) 274-5333

Check Our Low Prices Before You Buy

AGRI-INC.

Custom Built Farm Buildings
Designed To Your Needs



DAIRY
TIE-STALL
BARN

HORSE
STALL
BARN



Let Our Experience Work For You -

- Dairy Complexes And Replacement Stock Facilities
- Horse Stall Barns And Riding Arenas
- Workshop And Machinery Storage Buildings
- Timber Column Buildings For Light Commercial



AGRI-INC. The Construction Professionals

R.D. 4, Ephrata, PA 17522 • (717) 354-4271

Serving The Agricultural Industry For Over 20 Years

