

Franklin Co. DHIA

dhia Monthly Report

Pennsylvania Dairy Herd Improvement Association

May 1991
Rolling Herd Averages

Name		No. Brd.	Lbs. Cows	Lbs. Milk	Lbs. Fat	Lbs. Protein
RV & SV						
Hollenshead	B3	136	25,957	989	821	
Glenn & Mike						
Daugherty	3	133	22,803	763	736	
Stone Hart Farm	B3	125	22,306	764	720	
Robert E Harwood	3	115	23,239	862	717	
Doug & Barb						
McCulloh	B3	98	21,201	723	684	
Mike Flannery	B3	88	21,182	757	682	
Rohart Farms	3	156	21,034	804	679	
Stephen J Mellott	B3	125	20,637	772	671	
Ivan D Horst	3	102	21,473	789	670	
Oakleigh Farms	3	117	20,098	777	667	
John A Witmer	B3	42	21,103	734	664	
Daryl R Crider	B3	101	20,761	790	656	
Daniel D Eberly	B3	90	20,729	710	654	
Roger A Negley	B3	65	20,791	710	650	
Walnut Stuff Holstein	3	23	20,423	763	647	
Ernest & Anna Bert	3	52	20,970	747	645	
Carl O Stuff	3	54	20,184	742	642	
Eugene L Martin	B3	82	19,869	715	639	
L & M Horst Farm	B3	127	19,752	722	639	
Lee B Worthington	B3	138	19,896	756	638	
Mark & Alan Meyers	3	92	19,877	719	636	
Meyers Bros Dairy	3	166	20,455	741	633	
Clement Haldeman	B3	32	19,333	735	633	
Myr-Lea Farms	3	57	18,900	642	632	
Edwin R Eby	3	82	19,821	743	630	
William C Ile	3	94	20,120	712	628	
Burk Lea Farms	3	188	19,795	659	628	
Marcus & Chester						
Martin	B3	89	19,660	722	626	
Spring Haven Farm	3	75	19,622	631	624	
James & Nina Burdette	3	68	19,148	736	623	
Aldus Eby	B3	72	19,925	679	622	

Jaye C Young	3	66	19,401	658	621	
J Eldon Crider	3	59	18,944	686	619	
Kenneth L Lehman	B3	58	19,739	675	619	
Marvin Zimmerman II	G3	69	19,168	671	618	
Mervin & Rachel Frey	B3	60	19,048	735	617	
Dennis W Bricker	B3	39	19,249	696	617	
David & Frieda May	G3	65	19,149	681	616	
H Robert Mumma	B3	123	19,841	702	616	
Statler Farms	G3	251	20,141	731	616	
WA Hall & KM Horst	B3	53	18,995	699	616	
Roger & Ruthe						
Benedict	B3	101	19,374	717	616	
Garnet Eshelman Jr	B3	45	18,838	692	614	
Harold Goshorn	G3	84	19,251	694	613	
Kenneth L Baldner	3	31	19,174	757	613	
Fred E & Dale Rice	3	212	19,740	740	612	
Jeffrey L Martin	B3	90	19,726	629	607	
C Richard Locke	B3	93	18,661	757	606	
Antrim Way Farm	3	97	19,174	705	606	
Aqua Farm	B3	46	18,547	659	605	
David Hurst	B3	73	19,391	718	605	
Rebeken Farm	B3	109	18,816	707	603	
Gary & Roy Kendig	3	74	18,899	650	602	
Titus H Martin	B3	74	18,349	721	602	
Mt Pleasant Farms	B3	159	19,548	710	602	
Joseph S Middour	B3	120	18,376	710	601	
Stanley J Helman	3	69	18,863	657	601	
Culbertson Green						
Farm	B3	116	19,773	716	600	
Keeners Dairy	3	126	18,617	723	600	
Dale Wadel	B3	84	18,521	705	600	

Lactation Report

Oakleigh Farms							
Erica	RH	4-4	305	25,344	811	867	
Robert E Harwood							
160	RH	8-8	305	28,876	883	989	
Gaymere Farms							
305	RH	8-7	303	25,444	826	953	
Stanley J Helman							
Lily-28	RH	4-9	298	24,399	863	899	
Glenn & Mike Daugherty							
Daffy	RH	5-11	305	26,947	830	788	
Princess	RH	3-0	305	27,593	838	938	
William C Ile							
Satin	RH	3-5	305	26,467	863	901	
Carl O Stuff							
Vicky	RH	5-4	305	26,785	847	930	
Mike Flannery							
89	RH	4-3	305	26,695	814	773	
Beidel Brothers							
131	RH	3-8	305	29,715	865	903	
RV & SV Hellenhead							
Eva	RH	4-10	305	30,125	952	1251	
261	RH	3-10	305	32,614	881	1180	
272	GH	3-8	305	24,851	855	1000	

MAILBOX MARKET FOR SALE

Registered pygmy goat kids, sired by Permanent grand champion, beautiful caramel doe and grey agouti buck 717-732-1818 or 732-0889

Two 28 foot aluminum pontoon dock or boat one pair dual axles with multi-ply springs \$100 York Co 717-292-3655

3 spring Suffolk rams, all from triplet births, \$65 ea, 1 suffolk ewe 1 1/2 yrs old \$55 No papers Dauphin Co 717-896-8349

New 22" Penna 3 HP reel type self-propelled lawn mower Dauphin Co 717-469-2369

2 story cabin, Clinton Co on 5 acres wooded land modern conveniences, cal. 717-758-8085 after 4 p m North'd Co

1981 VW diesel pickup with cap 130,000 miles, ideal for misc. jobs York Co 717-432-3669

Australian blueheeler pups, good cattle dog and watch dog, Paul B. Stoltzfus, 302 Horning Rd., New Holland, PA 17557. Lanc Co

Small polled hereford herd, one bull, three cows, also two yearling hereford angus cross, price negotiable Luzerne Co Evenings 717-864-3373

Rotoc-hoe mulcher chipper, 8 HP, ex cond \$650 Dauphin Co 717-533-3181

John Deere 750 diesel 4 WD, 279 hrs with 67 loader, scraper blade, excellent condition, \$7300 OBO Leb Co 717-866-5507

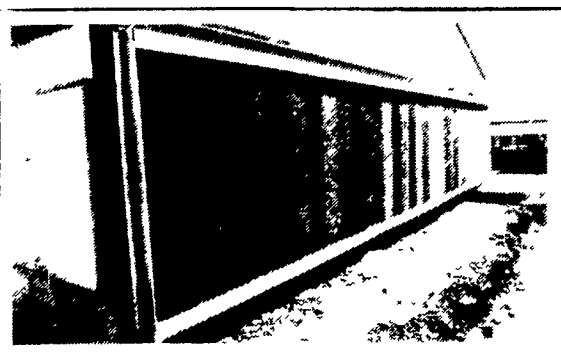
Young registered Scotch Highland heifers & bulls, Young Jenny & Jack burros 2 yr old Jack, three young angora goats Beautiful animals Leb Co 717-865-4473

273	RH	3-5	305	25,996	875	861	
285	RH	3-3	305	33,425	1000	1156	
324	RH	2-3	305	29,878	801	922	
Antrim Way Farm							
295	RH	5-9	305	24,863	811	967	
Stone Hart Farm							
Crystal	GH	3-6	305	30,788	922	949	
Elaine	GH	3-8	305	26,092	825	758	
Ivan D Horst							
16	RH	4-11	305	30,605	900	965	
We-Kings Farm							
119	RH	2-7	305	26,433	826	751	
Campbell-Run Jerseys							
24	RH		305	22,369	832	1126	

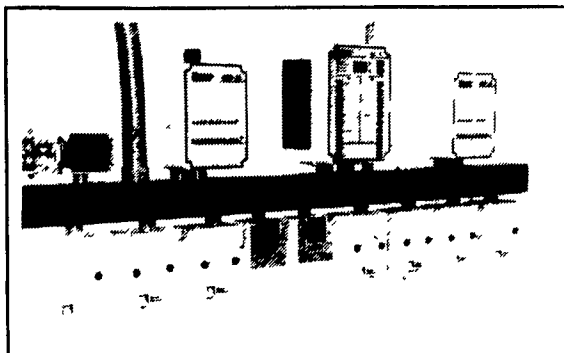
Get MOOVin' with Milkshakes!

aerotech

Tunnel Ventilation COOLING POWER



Evaporative Cooling On Opposite End Of Building

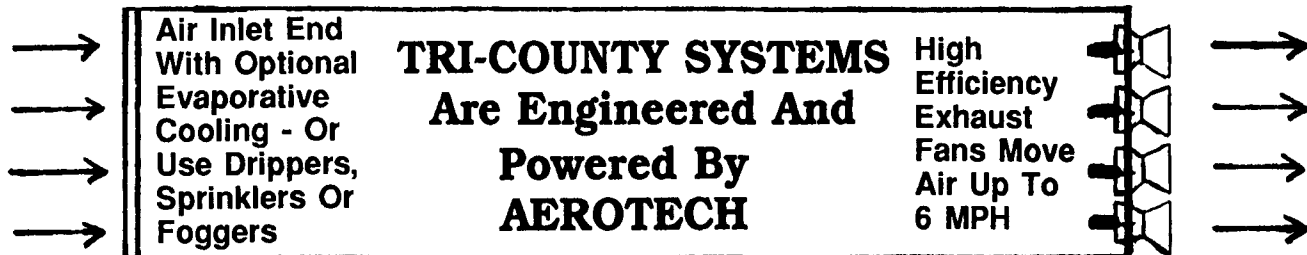


FANCOM Computerized Control Systems Stage Fans Precisely

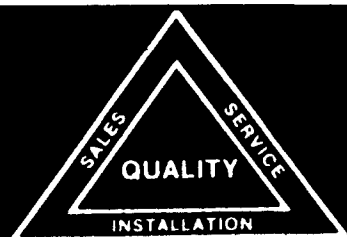


Exhaust Fans On One End Move Air Out Rapidly

Don't Let The Summer Heat Reduce Conception Rates Or Average Daily Gains



Let High Air Speeds Raise The Comfort Level Of Your Animals Or Birds. AEROTECH Tunnel Ventilation System Has Been Proven To Work In Over 20 Systems In The Area Over The Previous Three Years. Works Great During Cold Weather Too!



TRI-COUNTY

CONFINEMENT SYSTEMS, INC.

608 E. Evergreen Rd., Lebanon, PA 17042

Ph: 717-274-3488

Hours: Mon.-Fri.
7:00 to 4:30;
Sat. 8:00 to 12:00