

Oklahoma City Feeder Cattle

July 3, 1991

COMPARED TO LAST WEEK FEEDER STEERS AND HEIFERS OVER 600 LB. FIRM TO \$2.00 HIGHER. CALVES UNDER 600 LB \$1.00-\$4.00 LOWER DEMAND GOOD FOR YEARLINGS. MODERATE FOR CALVES WEIGH CONDITION MOSTLY AVERAGE. FLESH CONDITION OF YEARLINGS SLIGHTLY THIN TO AVERAGE. QUALITY PLAIN TO ATTRACTIVE QUALITY OF CATTLE IMPROVED OVERALL; CONDITIONS COMPARABLE SLAUGHTER COWS & BULLS \$2.00 LOWER RECEIPTS THIS WEEK 8,300, LAST WEEK 8,784; LAST YEAR 7,076 SUPPLY INCLUDES 76% YEARLINGS, 20% CALVES & STOCKERS UNDER 600 LB., 4% COWS & BULLS

FEEDER STEERS MEDIUM AND LARGE FRAME 1, FEW 225-400 LB \$138.00-\$150.00, 300-350 LB \$126.00-\$139.00, FEW 350-400 LB \$118.00-\$121.00, FEW 400-500 LB \$107.50-\$115.00, 500-550 LB \$98.00-\$109.50, 550-600 LB \$96.00-\$99.75, 600-700 LB \$93.00-\$98.00, 700-800 LB \$88.25-\$94.50, 800-850 LB \$86.50-\$91.00, 850-900 LB \$85.00-\$87.75, 900-935 LB \$82.50-\$85.25 1 ARGF FRAME 2 HOLSTEINS, 365 LB \$105.00, 525 LB \$92.00, 600-650 LB \$81.75-\$87.75, 700-750 LB \$74.00-\$79.50, 800-875 LB \$72.00-\$74.00

HEIFER HEIFERS MEDIUM AND LARGE FRAME 1, 225-250 LB \$139.00-\$146.00, 11W 300-400 LB \$105.50-\$121.00, 400-450 LB \$98.00-\$104.00, 450-500 LB \$94.00-\$98.50, 500-600 LB \$89.00-\$96.75, 600-700 LB \$87.50-\$92.00, 700-750 LB \$85.75-\$88.50, 750-825 LB \$81.75-\$85.25

SLAUGHTER COWS CLOSING SALES CUTTER, BONING & BREAKING UTILITY YG 1-3 AVERAGE DRESSING \$50.50-\$53.25; HIGH DRESSING \$54.50-\$57.50

SLAUGHTER BULLS CLOSING SALES YG 1 1350-1900 LB AVERAGE DRESSING \$60.50-\$63.25; HIGH DRESSING INDIV \$66.50

Central U.S. Carlot

Pork Report

July 2, 1991

Report supplied by USDA

CENTRAL U.S. CARLOT PORK REPORT FOB OMAHA BASIS INCLUDES MAJOR PRODUCTION AREAS IN MIDWEST AS OF 3:00 P.M. COMPARED MONDAY'S 3:00 P.M. CLOSE: FRESH PORK LOINS GENERALLY \$2.00 LOWER; BOSTON BUTTS MOSTLY \$2.00 HIGHER; SKND. HAMS GENERALLY \$1.00 LOWER; SDLS. BELLIES MOSTLY \$2.00 LOWER. MOVEMENT SLOW TO MODERATE ON MOSTLY LIGHT DEMAND AND LIGHT TO MODERATE OFFERINGS.

42.0 LOADS PORK CUTS
8.5 LOADS TRIM/PROCESS PORK PORK CUTS

LOINS, REG., FRESH
14-18 LBS., 8.5 LOADS, RANGE 123.00-130.00, WGHTD. AVG. 125.41.
1/4" TRIM, 14-18 LBS., 8.5 LOADS, RANGE 141.00-150.00, WGHTD. AVG. 144.59.

18-22 LBS., 8.5 LOADS, RANGE 141.00-150.00, WGHTD. AVG. 144.59.
18-22 LBS., 2.0 LOADS, RANGE 119.50-130.00, WGHTD. AVG. 124.25.
1/4" TRIM 18-22 LBS., 2.0 LOADS, RANGE 135.50-150.00, WGHTD. AVG. 142.25.

COMBO'S 22/UP LBS., RANGE 80.00, WGHTD. AVG. 80.00 D.

LOIN, BLS CTRCT 5-7 LBS. RANGE 258.00, WGHTD. AVG. 258.00 A.

BLS SIRLOIN .75-1 LBS. RANGE 189.00-192.00, WGHTD. AVG. 190.50 D.

TENDERLOIN 1.25/DN LBS. RANGE 400.00, WGHTD. AVG. 400.00 B.

PICNIC, FRESH FOR SMOKER TRIM, RS RANGE 59.50, WGHTD. AVG. 59.50 D.

BOSTON BUTT 4-8 LBS., * 6.0 LOADS, RANGE 86.00-93.00, WGHTD. AVG. 88.92.
1/4" TRIM, 4-8 LBS., 6.0 LOADS, RANGE 104.00-112.00, WGHTD. AVG. 107.17

COMBO'S 8/UP LBS., RANGE 66.00, WGHTD. AVG. 66.00 B.

SPARERIB, FRESH 1.5-3.5 LBS., RANGE 146.00,

WGHTD. AVG. 146.00 C.
3.5-5.5 LBS., RANGE 120.00, WGHTD. AVG. 120.00 D.

SPARERIB, FROZEN 1.5-3.5 LBS., RANGE 118.00, WGHTD. AVG. 118.00 A.

LOIN BACKRIB (BOXED) FRESH/FROZEN 1.75/DN LBS., 0.5 LOADS, RANGE 230.00, WGHTD. AVG. 230.00.

HAM, SKINNED, SELECTED FRESH 17-20 LBS., 3.0 LOADS, RANGE 72.00, WGHTD. AVG. 72.00.
FRESH 20-26 LBS., 5.0 LOADS, RANGE 74.00-78.00, WGHTD. AVG. 75.60.

HAM, SKINNED, COMMODITY FRESH 17-20 LBS., 3.0 LOADS, RANGE 69.00-72.00, WGHTD. AVG. 71.00.

FRESH 20-26 LBS., 1.0 LOAD, RANGE 72.00, WGHTD. AVG. 72.00.
FRESH 26-32 LBS., 0.5 LOAD, RANGE 70.00, WGHTD. AVG. 70.00.
FRESH 32/UP LBS., 1.5 LOADS, RANGE 65.00-70.00, WGHTD. AVG. 66.67.

BELLY, SDLS, SKIN-ON, FRESH FRESH 10-12 LBS., 0.5 LOADS, RANGE 53.00, WGHTD. AVG. 53.00.
FRESH 12-14 LBS., 4.5 LOADS, RANGE 50.00-55.00, WGHTD. AVG. 52.11.

FRESH 14-16 LBS., 4.0 LOADS, RANGE 50.00-55.00, WGHTD. AVG. 53.00.

FRESH 16-18 LBS., 2.0 LOADS, RANGE 53.00, WGHTD. AVG. 53.00.

FRESH 18-20 LBS., RANGE 50.00, WGHTD. AVG. 50.00 A.

FRESH 20-25 LBS., RANGE 48.00, WGHTD. AVG. 48.00 A.

PORK TRIMMINGS BONELESS PROCESSING PORK (CHEMICAL LEAN) COMBO 42% FRESH, 1.0 LOADS, RANGE 40.00, WGHTD. AVG. 40.00.
COMBO 72% FRESH, 5.0 LOADS, RANGE 63.00-66.00, WGHTD. AVG. 64.40.

PICNIC CUSHION MEAT COMBO 92% FRESH, RANGE 115.00, WT. AVG. 115.00 A.

BOXED 92% FROZEN, RANGE UNQ. BONELESS PICNIC MEAT COMBO 72% FRESH, RANGE 66.50-67.00, WGHTD. AVG. 66.91 A.

BOXED 72% FROZEN RANGE 2.5 LOADS, RANGE 70.00, WGHTD. AVG. 70.00.

SKINNED JOWLS COMBO FRESH, RANGE 36.00-37.00, WGHTD. AVG. 36.40 B.

BOXED FROZEN, RANGE 39.00, WGHTD. AVG. 39.00 D

NOTE: (*) REFLECTS 1/4" TRIMMED PRODUCT BROUGHT BACK TO A REGULAR COMMODITY BASIS.

ABCDE AFTER QUOTES REPRESENTS DAYS SINCE LAST ACTUAL MARKET TEST. QUOTES ARE DROPPED AFTER 5 DAYS OF NO TEST OR BEFORE IF THEY NO LONGER REFLECT CURRENT MARKET CONDITIONS.

PORK CARCASS CUTOFF

Tuesday, July 2, 1991

ESTIMATED GROSS CUTOFF VALUES OF A 175 LB HOG CARCASS BASED ON USDA CUTTING YIELD TESTS AND CARLOT PRICES. TUESDAY'S CARCASS GRADES & PRICES PER CWT.:

CHANGE FROM MONDAY'S VALUE US #1 76.07, -1.23; US #2 73.63, -1.19; US #3 71.18, -1.16; US #4 68.73, -1.13.

TODAY'S CALCULATIONS FOR US#2 175 LB. PORK CARCASS:

HAM, SKINNED, 14-20 LBS., 21.01% OF CARCASS, 74.50 VALUE, CHANGE FROM MONDAY, -2.50; LOINS, 1/4" TRIM 14-22 LBS., 20.33% OF CARCASS, 145.00 VALUE, CHANGE FROM MONDAY -2.00; BELLIES, SDLS., 12-14 LBS., 13.90% OF CARCASS, VALUE 55.00, CHANGE FROM MONDAY -2.00; SPARERIBS 3.5 DN. LB., 3.03% OF CARCASS, 146.00; PICNICS 8-12 LBS., 10.31% OF CARCASS, VALUE 45.50; BUTTS, 1/4" TRIM 4-8 LBS., 7.25% OF CARCASS, VALUE 107.00; CHANGE FROM MONDAY 1.00; JOWL 2.85% OF CARCASS, VALUE 36.50; NECK-BONES 1.52% OF CARCASS, VALUE 12.00; FEET 1.05% OF CARCASS, VALUE 13.50; TAILS 0.22% OF CARCASS, 39.00 VALUE; TRIM 72% 2.19% OF CARCASS, VALUE 64.50, CHANGE FROM MONDAY -2.50; LARD 10.85% OF CARCASS, VALUE 11.25.
TOTAL CARCASS: 94.51%
US #2 CARCASS VALUE PER CWT. = \$73.63.

NOTE: VALUE MAY CHANGE WITHOUT ADEQUATE TEST.

St. Louis Cattle, Hogs

July 3, 1991

CATTLE AND CALVES: 100 (0 SLTR, 100 FDRS)

SUPPLY CONSISTS OF FEEDER CATTLE AND COWS FOR THE REGULAR THURSDAY AUCTION, WHICH IS HELD TODAY DUE TO THE HOLIDAY. NO TEST ON SLAUGHTER CATTLE.

SLAUGHTER CLASSES: COWS: CUTT, UTIL, COMM BULK SALES HI-DRESS % LO-DRESS % BREAKING 2-4 BONING 1-2 LOW TO AVG. CUTTER RECEIPTS THIS WEEK 650; WEEK AGO 733; YEAR AGO 308

FOR THE WEEK, SLAUGHTER STEERS 2.00-2.50 LOWER EXCEPT HOLSTEIN STEERS 3.00 LOWER. SLAUGHTER HEIFERS 2.50-3.00 LOWER. COWS 3.00-4.00 LOWER. BULLS MOSTLY 2.00 LOWER. SLAUGHTER SUPPLY MAINLY CHOICE AND MIXED SELECT AND CHOICE STEERS AND HEIFERS, AROUND 15% COWS.

New Holland Dairy

New Holland Sales Stables

Wednesday, July 3, 1991

Report supplied by auction

100 COWS, 101 HEIFERS AND 6 BULLS. MARKET STRONGER.

PA FRESH COWS: 1000.00-1225.00. PA FRESH COWS: 1200.00-1575.00. WISCONSIN FRESH COWS: 975.00-1550.00.

PERRY COUNTY FRESH COWS: 800.00-1575.00.

HERD OF 21 HEAD, ALL STAGE COWS: 620.00-1325.00.

11 HEAD PUREBRED SPRINGERS AND FRESH: 735.00-1285.00. LOCAL SPRINGING HEIFERS: 875.00-1200.00.

PUREBREDS: 1135.00-1300.00. SHORTBRED: 725.00-925.00.

OPEN BREEDING AGE: 540.00-690.00.

SMALL OPEN: 350.00-475.00. BULLS: 420.00-1025.00. LOCAL COWS, FRESH AND SPRINGERS: 585.00-1575.00. VACCINATED HEIFERS BRING A PREMIUM.

HORSE SALE

Fri., July 19 - 7:00 P.M.

Tack 6 P.M.

Horses Hitched 12 Noon

2 Load Canadian Cows
And 1st Calf Heifers
Sell Wed., July 10
See Detailed Listing Page B46

**NEW HOLLAND SALES STABLES INC.
THE ACTION AUCTION**

LIVESTOCK IS OUR ONLY BUSINESS

MONDAY

SLAUGHTER HOGS



EARLY BIRD HOG SALE
8:00 A.M.

Sell Your Hogs At New Holland Sales Stables, Inc.
See them weighed, sold and pickup your check.

10:00 AM



HORSES
MULES

1:30 PM

BEEF SALE



SHEEP
GOATS

CALVES

WEDNESDAY

HEIFER SALE
11:00 AM

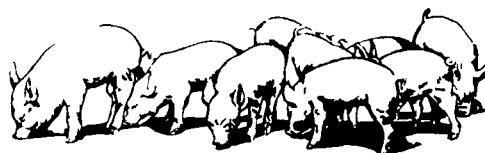
COW SALE 12:00 NOON



We have the usual run of 50 to 100 Heifers, all ages. Loads of fresh cows and springers from our regular shippers. Also some local fresh cows and springers.

1:30 P.M.

FEEDER PIG SALE



Pigs are accepted after 6:30 A.M. State graded from 8 to 12 Dairy Barn and Feeder Pig Barn are cleaned and disinfected weekly for your protection.

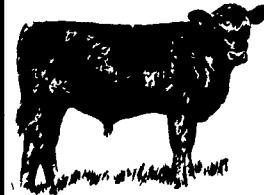
THURSDAY

Beef Auction
10:00 A.M.

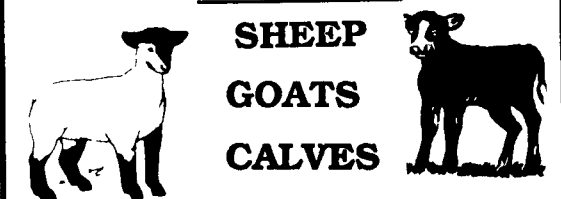


BULLS
STEERS
BEEF COWS

1:00 P.M.
STOCKERS
&
FEEDERS



12:30 P.M.



SHEEP
GOATS
CALVES

NEW HOLLAND SALES STABLES, INC.

12 Miles East of Lancaster Off Route 23, New Holland, Penna.

MANAGERS

Norman & David Kolb - 717-397-5538

Field Representatives

Luke Eberly - 215-267-6608 738-1865

Homer Eberly - 215-267-3047

Ron Ranck - 717-656-9849

Sale Barn Office Manager

Roger Floyd - 717-354-4341

FAX # 717-355-0706

Order Buyer

Paul Good - 215-445-6662