

# CENTRAL PENNSYLVANIA

# DAIRY TOUR

## Thursday, July 11

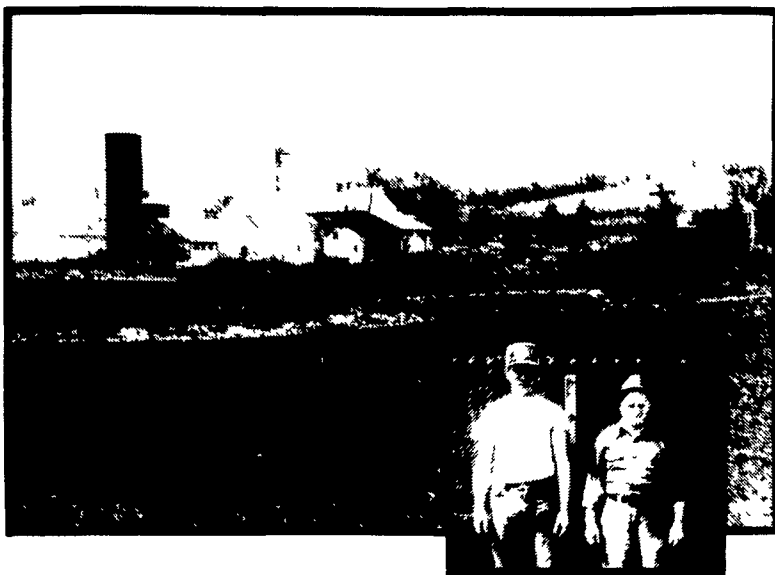


**Mark & Doris Kauffman** (holding son Joel)

According to Mark, milk production increased significantly while feed bills dropped dramatically since feeding Harvestore® high moisture corn to his 52 Holsteins currently at 22,258 lbs. milk and 784 lbs. fat. 4223 Slurrystore® system built last year.

**Paul (right) and Dick Hartle**

The Hartles have fed Harvestore® high moisture corn since 1982 to their herd of 51 Holsteins at 21,200 lbs. milk and 827 lbs. fat. They just replaced the pictured concrete silo with a 2068 Harvestore structure for haylage. No corn silage fed to the milking herd.



**Kore (right) and Glen Peachey**

61 cows with current production at 21,193 lbs. milk and 795 lbs fat. Since erecting the Harvestore® structures in 1975, the Peachey's have not fed any baled hay to the milk cows. Income over feed costs is over \$2,100 per cow.

**For complete tour information or to make reservations, contact your area representative or the Penn Jersey office (717-354-4051).**

The results you may achieve with your Harvestore® System depend primarily upon your management skills and may vary from successful results achieved by others. Any application to a particular farming operation requires the advice of qualified experts and is subject to limitations of good management, weather and other conditions present at the individual location. Harvestore is a registered trademark of A O Smith Harvestore Products, Inc.



### **PENN JERSEY PRODUCTS, INC.**

YOUR LOCAL INDEPENDENT AUTHORIZED HARVESTORE® SYSTEMS DEALER

P.O. BOX 7 • NEW HOLLAND, PA • 717-354-4051

**SERVICE IS THE KEY!**

Mill Creek, PA  
717-483-6940  
John Yoder, Mgr.

New Enterprise, PA  
814-766-2364  
Ken Bupp, Mgr.

**SUB-STATIONS SERVING YOU FROM**

Newville, PA  
717-776-3397  
Maynard McCullough, Mgr.

Columbus, NJ  
609-293-7136  
Charles Van Mater, Mgr.