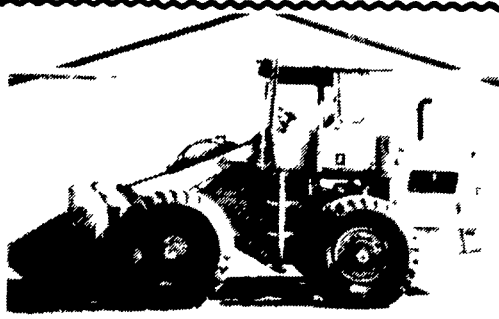


TRACTORS

JD 4440 cab and quad range
 JD 4020 diesel, side console,
 power shift
 JD 3020 diesel, side console

(717) 494-0441



Hough #70 Loader
 Cummins Diesel,
 Good Condition
 215-383-6818

NH 892 harvester
 w/2 RN low
 profile corn head
 & 880W pickup
 head, field ready
\$4,650/OBO
 Call early
 mornings or
 evenings till
 7 p.m.

717-949-3074
 or
 703-879-9926



IH 186 HYDRO
 Runs Exc., Field Ready
\$9,000
 301-833-9091

COLLECTORS CORNER

JOHN DEERE'S

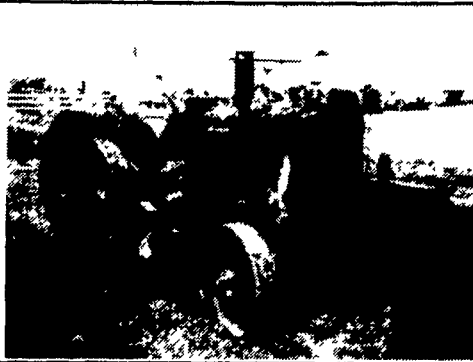
- | | | |
|-----------|-----------|----------------|
| (3) 830's | (3) 320's | (5) H's |
| (8) 730's | (4) 80's | (6) L's, LA's, |
| (3) 630's | (2) 70's | LI's |
| (2) 530's | (3) 60's | (5) M's, MT's |
| (2) 435's | 50 | (2) R's |
| (4) 430's | (3) 40's | 4020 P.S. |
| (4) 820's | (8) A's | High |
| (4) 720's | (6) B's | Crop |
| (3) 620's | (4) D's | (2) 440 |
| (3) 520's | (3) G's & | Crawler's |
| (3) 420's | GM's | |

OTHERS

- | | |
|----------------------|-----------------------|
| Case VAC- WF- 3 Pt. | Ferguson 35- New |
| (2) Case 400 Hi Crop | Oliver 1550 Hi Crop |
| Case 830 Hi Crop | Oliver 1650 Hi Crop |
| Ford 2000-100 Hours | Oliver Super 77 |
| (2) Ford 8N- 1 Has | Hi Crop |
| 400 Hours | Oliver 60 |
| Farmall 560- 1500 | Oliver 66 |
| Hours | (2) Oliver Super 77 |
| IH Spirit Lawn & | (2) Oliver HG Crawler |
| Garden w/Tools | |

1930 JD "D" On Full Factory
 Steel, Motor Is Loose, Good
 Restoration Project.

\$1900.00



HOURS:
 Mon.-Fri.
 7:30 To
 5:00
 Saturday
 7:30 To Noon

WENGBERS INC.

251 SOUTH RACE STREET, MYERSTOWN, PA 17067

717-866-2130 Or 717-866-7147
 (Days) (After 5:30 P.M.)

2449 SOUTH QUEEN ST (rear),
 YORK, PA 17402
 Interstate 83 • Exit 6E

Douglas EQUIPMENT & SUPPLY CO.

FAX 717/741-1518
 717/741-2626
 or 717/741-1797



Tennant 250 High Dump
 Sweeper, 2 Cyl. Water Cooled,
 Hydrastatic, Good Cond.
\$4,500

Many Tennants in Stock, Call
 For Prices



Pettibone Super 6 IH 6 Cyl.
 Gas, 33' Lift, 6000 Lb Cap, 4
 WD, 4WS, Exc. Cond
\$9,900



Clark 35C, 3-53 GM Diesel Full
 Cab & Heater, Exc. Cond.
\$15,500

Clark 45C - 4-53 GM Diesel Full
 Cab & Heater, 17 5x25 Rubber,
 Good Cond **\$18,500**



BACKHOES IN STOCK
 Case 580E, ROPS, Footawing, Good
 Cond **\$16,900**
 Case 580D, Full Cab & Heater,
 Footawing, Very Good Cond
\$15,900

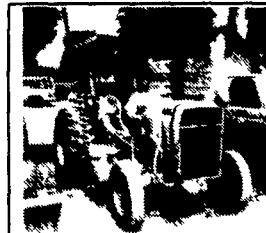
IH 260A, ROPS, 4 Lever, Power
 Shuttle **\$8,500**
 John Deere 500A, Diesel, Power
 Shift **\$5,500**



Huber Maintainers M-600's (2)
 w/Ford Gas, (1) w/Ford Diesel,
 All Have Front Blades, Wide
 Tires, Very Good Condition,
 Starting At **\$9,900**



Champion D715 Grader, Full
 Cab & Heater, Rear Ripper,
 Good Cond. **\$13,500**



Massey Ferguson MF40B 3 PT,
 PTO, Diesel, Sickle Bar Mower,
 Good Cond. **\$6,500**



Gradall G660, Diesel Up &
 Down, Remote, Cleaned &
 Painted, Good Cond. **\$12,250**

FORKLIFTS

1987 Gradall 534B-8, 36' 8,000 lbs,
 v.g. cond. Call For Price
 Pettibone Super 6, 33' lift, 4WD\$9,900

RUBBER TIRE LOADERS & SKID STEERS
 Ford 335, 3 pt., PTO, diesel, front loader, 1 owner...\$9,800
 Clark 35C, full cab & heater, GM diesel,
 good rubber, good cond. \$15,500
 Clark 45C, GM diesel, cab..... \$18,500
 Case W20B, cab & heater, good cond. \$18,500

SWEEPERS

Tennant Model 92, 4 cyl. water cooled, hydrastatic,
 good cond. \$5,500
 Tennant 240 w/front power broom, 2 cyl. Kohler...\$2,500
 (2) Tennant 240, 2 cylinder Kohler..... \$3,500 each
 Tennant 250, hi dump, cab, water cooled.....\$4,500
 Tennant 360, in shop
 Wayne 973, V8 gas, dual gutter brooms. \$3,850

ROLLERS

1988 Bomag BW-100-AD, 350 Hrs. \$14,500
 Gallon 10-14T tandem, 6 cyl. IH gas, hydrastatic \$4,850
 Ferguson 9 wheel rubber tire roller Oliver
 gas Call For Price

DOZERS & CRAWLER LOADERS

Terex 82-40 GM diesel, P/S, canopy, ripper \$16,500
 Cat 951B, Complete for parts Call For Price

GRADERS

Huber F-1700 6V-53 Detroit, full cab & heater,
 power shift\$9,500
 Huber M-52 Maintainer, 4 cyl. cont.,
 sideshift center blade..... \$3,985
 Huber M-500, 4 Cyl. continental, gas, wide tires,
 front blade \$6,500
 Huber M-600 wide tires, front blade, ROPS,
 Ford gas Call For Price

DUMP TRUCKS

1978 Int. Dump Loadstar 1700, gas, 5&2 w/plow &
 spreader\$6,000
 1978 Ford F7000 Cat dsl, air brakes, 5&2.....\$7,000
 1971 Ford F600 gas, 5&2 w/plow\$4,000

MISC.

I.R. 185 compressor, JD diesel, 1,600 hrs.\$5,850
 Rogers 15 ton fixed neck low bed.....\$1,500
 New Custom trailers in stock, 3 ton thru
 20 ton Call For Prices
 R22 EUC End dump, Cummins Diesel,
 R&O..... \$12,500
 New & Used Buckets
 Barber Greene TA30 Wheel Trencher, IH diesel, 12"
 bucket, 16" side cutters, exc. cond., good U/C \$8,500
 Power Brooms, 3 Pt. & Front Mount Call For Prices
 Schramm Pneuma Tractor, 125 compressor w/paving
 breaker & rock drill boom attachment.....\$3,850
 MF 40B, 3 pt. PTO, diesel, sickle bar mower.....\$6,500
 1989 Puckett Bros. T450 power box, 642 hrs. \$14,500

Best Buys in Used Equipment

TRACTORS

- | | | |
|-----------------|--------------|---------------------------|
| AC D17 | * JD 1020 | Case 2290 |
| IH 986 | JD 2630 | * Case IH 1840 Skid Steer |
| IH 1466 | JD 3155 MFD | Case IH 4890 |
| IH 1586 | JD 4230 | Case IH 7110 MFD |
| IH 485 | JD 4640 | Case IH 7130 MFD |
| IH 3688 | JD 3020 | Case 1835C Skid Steer |
| IH 1486 | JD 4440 | Case 2590 |
| IH 484 w/Loader | JD 7020 | ST 210 |
| (2) IH 3588 | MF 1100 | ST Panther II |
| IH 3488 Hydro | MF 1155 | Farmall A |
| IH 886 | MF 2675 | * NH 455 Skid Steer |
| IH 966 | Case IH 7110 | |

DISCS

- | | | |
|-----------------|--------------|-------------|
| Pittsburgh 19' | Ford 230 16' | IH 370, 12' |
| Crustbuster 20' | BH 24' | KR 2416 |
| White 235 | IH 14' | KR 1966 31' |
| Miller 20' | IH 470 | KR 4966 31' |
| JD 14' | IH 475 | KR 2440 |
| JD 230, 21' | IH 490, 22' | (2) SF 20' |
| MF 14' | IH 37, 10' | SF 29' |
| MF 820, 30' | IH 496, 22' | TW 15' |
| Ford 241 22' | | |

TILLAGE

- | | |
|--------------------------------|--------------------------|
| * MK 23' Field Cultivator | IH 710 Plow, 7x16 |
| Glencoe 18' Field Cultivator | AC 7x16 On Land Plow |
| Dunham Lehr 15' Cultumulcher | MK 8R Field Cultivator |
| Oliver 6x18 Plow | MK 32' Field Cultivator |
| Brady 18' Field Cultivator | JD 1100 Field Cultivator |
| KR 2321 Chisel Plow | JD 1600 Chisel Plow |
| IH 22' Field Cultivator | JD 2350-2450 8x18 Plow |
| IH 25' Field Cultivator | BR 32' Packer |
| IH 16" Field Cultivator | BR TPW 14 Packer |
| IH 24' Field Cultivator | (2) BR 25' Packer |
| IH 165 Plow | BR 14' Chisel Plow |
| (2) IH 45 18' Field Cultivator | BR 15' Cultumulcher |
| IH 415 Cultumulcher | BR 21' Field Cultivator |
| IH 140 Plow 4x18 | WR 10x18 Plow |

MISCELLANEOUS

- | | |
|------------------------------------|----------------------------|
| (2) FMC Sprayers | (2) JD 1209 Haybine |
| Great Plains #10 Drill | JD Shredder #27 |
| BH 3450 Loader | JD 737 15' Mower |
| John Blue Sprayer 500 Gal. | (2) JD 7000 Planter, 8 Row |
| Haybuster Tandem No-Till Drill 24' | C. c IH 900 Planter 6RN |
| FD F-600 Dump Truck | * IH 33 Loader |
| * Hardi 260 Mower | (2) IH 6200 Drills |
| * NH 56 Rake | IH 10 Drill, 18x7 |
| * JD 15' Drill | IH 50 Shredder |
| * JD 8300 Drill | |

HAY EQUIPMENT

- | | |
|--------------------|--------------------------|
| IH 46 Baler | NH 90 Bale Stacker |
| NH 1010 Bale Wagon | NH 488 Mower Conditioner |
| NH 277 Baler | |

COMBINES

- | | | |
|------------------|-------------|-----------------|
| Gleaner LKS | (3) IH 1460 | JD 6600 |
| Gleaner N6 | IH 715 | (2) JD 7720 4WD |
| Gleaner M2 | JD 9600 | MF 760 |
| Case Int. 1660 | JD 8820 MFD | (2) MF 750 |
| (3) Case IH 1680 | JD 6620 | |

Large Selection Of Cornheads And Platforms Available
 * Just Traded

HOOBER HOOBER EQUIPMENT INC MIDDLETOWN, DE

(302) 378-9555 1-800-341-4028

