

**Madey Farms
Belarus Sales & Service
814-467-8839**

- Cub Lowboy 185..... \$3,600
- IH 1486 4 pst, TA, dual PTO.. \$8,500
- IH 1486 4 pst 20.8x38 tires..... \$8,500
- White 2-150, solid..... \$7,500
- White 4-150 w/duals..... \$10,500
- AC 7580, rent, lease, buy..... \$15,500
- IH 1586 4 post, dual PTO..... \$9,600
- IH 1566, 1976 model..... \$7,900
- IH 1466 cab/air, '76 model, sharp.. \$8,500
- Case 970 diesel, nice..... \$6,600
- Case 1030 diesel..... \$4,600

Silawrap round bale wrapper, excellent shape, \$7,500. Sunfilm stretch wrap, \$73, quantity discount (717)369-5702.

WOODS RM500, \$1,200
301-833-9091

WOODS RM600, \$1,400.
301-833-9091

WOODS ROTARY MOWERS USED. HD315 Batwing 1year old, 10'3pt centered 120"; RM90; Ford 917H 88" flail. Days 215-285-2255; Nites 215-298-3206.

Woods 80 pull type mower, \$235. Lely fertilizer spreader, excellent condition, \$250. Sickle bar mower #8, iron wheels, working condition, 5' cut, \$125 1085 Hesston 9' cut haybine, like new, \$6,500. (215)968-1812

Kelly Ryan Big Bagger



NEW ADVANCED HI-RISE BAGGER
8', 9' - 2 Wheel, Self cleaning
TRENCH COVERS 6 MIL BND, B&W
UP NORTH SILAGE BAGS
CUSTOM BAGGING

AG PRODUCTS CO., INC.
717/328-3177

Silage Covers
40x100x6 mil white tri-layer \$130
50x100x6 mil White tri-layer (by order)
32x100x6 mil. black, \$70
40x100x6 mil. black, \$90

Sunfilm Stretch Wrap
20"x6000"x1 mil. white
1-5, \$73/roll
11-20 \$71/roll
5-10, \$72/roll
21 Up \$70/roll

Special Repair Tape
Black or White
3"x105', \$7/roll
3"x175', \$12/roll

Authorized Dealer For
Silawrap Machines
(high moisture round bale wrapper)
Welger Round Baler

***** **Martin's Custom** *****
(717) 369-5702

WENGERS FARM MACHINERY, INC.

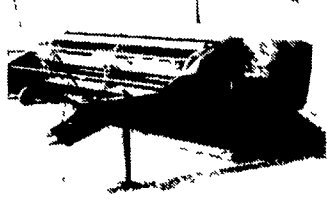
ROUTE 501 - 1 MILE SOUTH OF MYERSTOWN, PA.
717-866-2135

Mailing Address: 251 S. Race St.
Myerstown, PA 17067

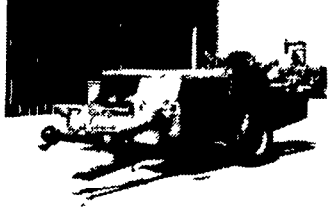
HOURS:
MON.-FRI. 7:30-5
SAT. 7:30-NOON



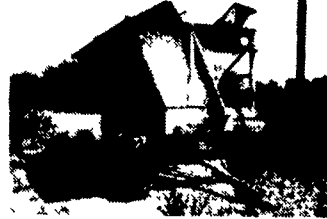
Owatonna 540 Stacker In Good Condition- Priced To Sell.



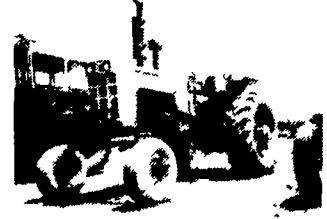
New Holland 489 Haybine, 2 To Choose From, Very Good Condition.



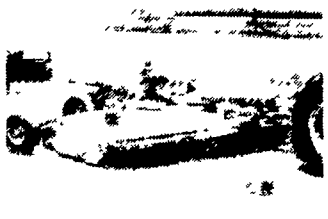
John Deere 467 Baler, Good Condition- Call For Details.



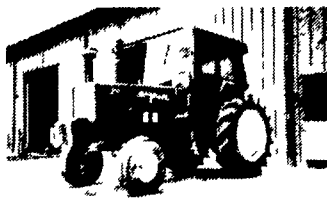
Richardton 1200 Dump Wagon w/ Roof.



Oliver 1855 18.4x34's On Power Adjust Rims, Dual Remotes, 98 HP.



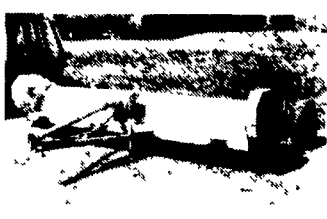
Terrain King 15' Batwing Rotary Mower, Good Condition Before You Buy A Heavy Duty Batwing Mower, Call Us. 2 To Choose From.



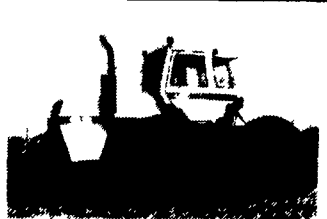
Allis Chalmers 200 w/Cab 1975 18.4x38's On Power Adjust Rims Dual Remotes, 12 Front Weights.



Case 2870 4WD, 1978, 3 Pt. 1000 RPM PTO, 250 HP.



Woods 144- 12' Stalk Chopper, Good Condition.



Case 4490 4WD, 1982, 3 Pt. w/Quick Hitch, 1000 RPM PTO, 12 Speed Transmission, 175 HP, Very Clean, 2 To Choose From.

FARM TRACTORS

- IH 986 Cab/Air
- IH 826 w/Cab
- IH 656 Gas, Hydro HI-Crop
- IH 484 Diesel
- IH 560 Standard
- IH 2404
- IH Super MDTA
- IH- AVW/Cult.
- Case 4490- 4WD, 3 Pt., PTO
- Case 2870- 4WD, 3 Pt., PTO
- (3) Case 930 Standards
- Case VAC
- Ford 6600 HI-Crop
- Ford 5000 Diesel
- Ford 2000 Offset- Coming In
- MF 1085- Coming In
- MF 2200 w/Mid Mount Sickle Mower
- Ferguson 40
- White 2-105- Coming In
- Oliver 1855
- Oliver 1800 Gas, NF
- AC 7040- Coming In
- AC 200 w/Cab
- AC 185 Diesel
- Kubota L2850 4WD w/Ldr.
- Deutz 90-06 w/Cab Needs Work
- NH 555 Skid Steer
- 1986 Jeep Cherokee
- 1976 GMC Pickup- Nice Condition

LONG

- New 2360, 4WD, 35 HP
- New 2460, 4 WD w/Loader 42 HP
- New 310, 4WD, 28 HP

TILLAGE

- New- Long Swing Plow 3,4,5,6,7, & 8 Bottoms
- IH 710- 7x16" ASR On-Land
- JD 2500 6x18" ASR 5X Base Plow
- MF 880 6x18" ASR Plow
- IH 720- 5x18 ASR Plow
- IH 720- 5x16 ASR On-Land Plow
- White 548 5x16 ASR Plow
- IH 710- 5x16 ASR Plow
- White 548 4x16 ASR Plow
- MF 4x16" ASR Plow
- Oliver 546 4x16 ASR Plow
- White 3x18" ASR Plow
- IH 710 3x16 Trip Plow
- JD 3x16" 3 Pt. Plow
- Ferguson 2x12 3 Pt. Plow
- IH 2x14" 3 Pt. Plow
- JD 8' Offset Disc
- Bush Hog 8' Offset Disc
- Miller 10' Offset Disc
- MF 12 Offset Disc
- JD 360- 14' Offset Disc
- White 271- 19' Wing Fold Rock Flex Disc
- Rhino F-90- 20' Wing Fold Rock Flex Disc
- Kewanee 12' Rock Flex Disc
- IH 500 Cutting Disc- 12'
- Kewanee 13' Disc
- (2) Oliver 12' Disc
- Oliver 10' Disc
- Oliver 8'6" Disc
- IH 5'- 1 Pt. FH Disc
- IH 55- 13' Chisel Plow Pull Type
- IH 55 10' Chisel Plow Pull Type
- JD 1600- 10' Or 12' Chisel Plow Pull Type
- White 285- 16' Field Cult. Pull Type
- IH 15' Field Cult.- Pull Type
- Brillion 15' Field Cult.- Pull Type
- (3) JD RM 6x30 S-Tine Cultivators
- JD RM 4x30 Cultivator
- JD RM 4x36 Cultivator

TILLAGE

- Ford 2X 3 Pt. Cult.
- Super A Cultivator
- IH 315 12' Cultimulcher
- IH 315 14' Cultimulcher
- Brillion 13'8" Cultimulcher
- JD 8' Cultimulcher
- JD 930- 12' 3 Pt. Cultimulcher
- (4) 8' Land Roller
- Brillion 10' Cultimulcher
- Dunham 10' Cultimulcher
- Brillion 11' Cultipacker
- Brillion 14' Cultipacker w/Transport
- Dunham 16' Packer
- JD 414 Rotary Hoe- Coming In

MISC. EQUIPMENT

- Brillion 8' Packer Seeder
- Manure Forks
- Cabe- AC 7000, JD 4020, Ford 7000, IH 1066
- Cub Snow Blades
- 3 Pt. Dirt Scoops
- 3 Pt. Bale Spears
- 3 Pt. Boom Poles
- NI 325 2R Compicker- Coming In
- NI 324 2R Compicker
- 18.4x38 Duale
- 20.6x38 Duale
- JD #300- 23x7" SD Drill
- (3) JD 2RN Corn Head
- Ford-NH 824 2RN Corn Head
- (2) NH 2R Corn Head, Coming In
- IH 830 3RN Corn Head
- Field Queen 3x40 Corn Head
- JD 853 Bean Head
- Woods 144-12' Stalk Chopper
- Mengale 3 Pt. Harvester
- JD 2X Complanter
- (2) MF 2X Complanter
- Danuser Post Hole Digger
- Danuser Post Driver
- IH 530 Manure Spreader
- Richardton 1200 Dump Wagon
- JD 343 Corn Head- Coming In

NEW EQUIPMENT

- King Kutter Scraper Blades 6' And 7'
- King Kutter Post Hole Diggers 9" and 12" Augers
- King Kutter Discs 5 1/2' And 6 1/2' - 3 Pt.
- King Kutter Grading Boxes 4', 5 1/2', 6', 7' & 8'
- King Kutter Stone Rakes 4', 5', 6', 7' & 8'
- Cornshellers- 3 Pt. And Pull Type
- Hay Tedders- 9'- 3 Pt.
- Hay Wheel Rakes- 3 Pt.
- Seeders- Broadcasters- 3 Pt.
- Potato Diggers 1 Row- 3 Pt.
- Shaver Post Driver HD-8 And HD-10
- Cement Mixers-3 Pt.
- 10' Pasture Drag
- Woodsman- 3 Pt. Saw

ROTARY MOWERS

- King Kutter Rotary Mowers- New 4', 5' And 6' 3 Pt. And Pull Type
- King Kutter Finish Mowers- New 4', 5', 6' & 7'- 3 Pt.
- Woods New 121 Twin Cadet- 10' 2-Terrain King 15' Batwing
- Long 6' 3 Pt. Estate Mower
- Ford 5' 3 Pt. Rotary
- Mott 3 Pt. 5' Flail Mower

HAY EQUIPMENT

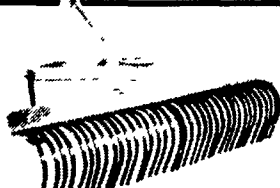
- JD 3940 Harvester- Coming In
- JD 3960 Harvester- Coming In
- NH 469 Haybine
- JD 467 Baler
- NH 451 Sickle Mower
- Gehl 880, Moco
- JD Hay Pickup Head- Coming In
- OMC 540 Stacker
- NH 256 Hay Rake
- JD 213 Flex Head
- NH 56 Hay Rake



• King Kutter's New Free Floating Finishing Mower Leads The Way In Performance And Quality. It Utilizes A 40 HP Cast Gear Box, Shielded PTO Shaft, Front Rollers, Rear Wheels And A Self Tightening Belt That Reduces Slippage. Available In:
4'- \$995
5'- \$1095 6'- \$1195



• Rotary Mowers Include Stump Jumper, 8" Puncture Proof Tires, Shielded PTO. Available In:
3 Pt.:
4'- \$595.00
5'- \$650.00
6'- \$895.00
7'- \$1595.00
Pull Type:
4'- \$695.00
5'- \$795.00
6'- \$995.00
7'- \$1995.00



• King Kutter 3 Point Hitch Yard Rakes Have 5 Forward And 3 Reverse Angular Settings. The Spring Steel Teeth Are Separately Mounted For More Durability.
4'- \$395
5'- \$450
6'- \$495
7'- \$550
8'- \$595



• Long Rotary Tillers Designed To Give The Best Mix To Your Soil. Digging Depths To 4 1/2" Are Ideal For Pulverizing.
55"- \$1495.00
63"- \$1795.00
71"- \$1995.00



• King Kutter Disc Harrow Is Constructed Of Rigid Angle Iron. High Carbon Steel Axles Are 1" Square Mounted On Greasable Bearings With Gangs That Have Angle Adjustments.
5 1/2' - \$495.00
6 1/2' - \$550.00