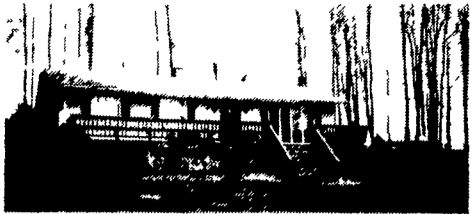


**Northcentral Pennsylvania
Bradford County**



Asking \$109,000 (Was \$129,000)

- Completely maintenance free on 2 acre ± 10 more acres available.
- Total real estate, county, township, and school taxes are \$800 per year
- Electric bill averages \$80 per month year around.
- Heat - Wood stove & electric
- Vinyl siding, Anderson Windows
- Appliances, wood stove, water softener, drapes included
- Wood shed 12x16, playhouse/guest house 8x12
- Rear patio, front deck
- Kitchen/dining area, 3 bedroom, 1 1/2 bath, living room, utility room, mud room, 2 large family room.
- In a secluded area with lots of stonework
- Lots of hunting & fishing, recreation areas
- On a hardtop road, 2 miles from Canton, PA
- No real estate fees
- No need to lock your doors at night
- Phone 717-673-3372

36 REAL ESTATE

GOOD LANC. CO. SOIL

priced to sell to settle estate 45 acres, Bainbridge area, Reduced to \$195,000

WOODLAND-SOUTHERN LANCASTER COUNTY
Virgin timber, deer, a delightful setting, 52 acres \$209,500

BRECKNOCK TWP.
15 1/2 acre farm w/2 1/2 story 4 BR home, bank barn, 65x80 bldg only 7 yrs. old, shop and equipment building ideal for beef, veal, horses. ~~\$279,000~~ \$259,000

KINGSWAY REALTY
1770 Oregon Pike
Lancaster, PA 17601
717-569-8701
717-733-3344

160 Acre Plus Farm, 2 Harvestore Silos, 180' Barn, 45x90 Metal Implement Building, Property On Hard Road, Trout Stream Bi-sects The Property, Fixable House, Tenant House Occupied. Mobile Unit On Slab, Good Condition

\$195,000

North Edmeston, NY

215-767-3133 Evenings

**410 Acres
225 tillable
125 pasture.**

Complete operating Dairy Farm. 175 freestalls, Double Six milking parlor, auto. take-offs, and 7 silos. 100 Acres with dairy barn, 36 acres open land, 130 acres open land, 22.5 acres open land, 118 acres with heifer barn, 4 br house with 1 acre.

Dairy Farm, Benton PA

99 Acre, 73 tillable, 53 comfort stalls, 20x60 Harvestore, 20x60 stave, bunk feeder, bulk tank, 4 BR frame house. \$279,500.

Call Harry Zimmerman

**Office: 717-299-4885
Home: 717-355-2048
Car: 717-575-2542
TOWN & COUNTRY REALTY**

BEAUTIFUL FINGER LAKES AREA

DAIRY FARM, 144 acs, 100 acs til, pasture, forest, T style barn, 130x35 + 30x15, 35 cow ties, 25 freestall, 2 silos, 600 gal bulk tank, 3 bdrm residence, scenic area, \$88,000 #3075

TURNKEY DAIRY FARM 480 acs, 400 acs til, pasture, forest, marrow field, 15 year old barn 46x220, 120 freestall, parlor, heifer barn, storage barn, shop & shed, 2 silos, 1200 gal bulk tank, grain bins, 14 rm main house plus mobile home, \$750,000 Livestock incl'd, 200 head

BEEF FARM, 400 acs, 275 acs til, pond stream, large T style barn, 2nd barn, Greek revival home, updated, 8 rms, needs to be seen, 2 car garage, #3116

GENERAL FARM, 337 acs, 100 acs til, pasture, forest, 2 barns, silo, bulk tank, large home \$240,000 #3143.

FARMETTE, 52 acres, 40 acs. til, barn w/box stalls, calf pens, grainery, chicken coop, 2 story home, garage w/workshop, reduced to \$95,000. #3157.

DAIRY/CASH CROP/BEEF FARMS, FARMETTES, HORSE FARMS, ACREAGE, LAKE, VILLAGE & COUNTRY HOMES, CHALET.

MAKITRA GALLERY OF HOMES
National Advertising National Relocation Service
4 West Steuben St. Bath, N.Y. 14810

Fax 607-776-6665
24 Hrs. 607-776-2468
After Hrs. 607-776-2386

Marlin H
Fields
Real Estate

MIFFLIN COUNTY OFFICE (717) 248-5451
101 No. Wayne Street
Lewistown, PA 17044 (717) 248-3904 FAX
JUNIATA CO. OFFICE (717) 436-8839
NORTHUMBERLAND CO. OFFICE (717) 286-1733

WE ACT AS LOCATORS FOR FARMS AND LAND RECREATIONAL AND RETIREMENT PROPERTIES - GOOD HUNTING & FISHING

- F202 Snyder Co. - 97 ac farm (17 ac till, 78 wood) Call Dallas
- R195 Juniata Co. - 117 ac gen farm, (40 ac till) Call Les
- R196 Juniata Co. - 31 Ac farmette, 17 ac til 13 ac wood Call Rick
- R198 Juniata Co. - 1 11 ac 2 BR home or cottage Call Harold Ford
- L30 Juniata Co. - 1/2 Ac lot Walker Twp Call Harold Ford
- L40 Juniata Co. - 1 Ac wooded lot, res area Call Harold Ford

PRODUCTION FARMS

- F502 Huntingdon Co. - 350 ac dairy, mostly till Call Rachael or Dallas
- F501 Huntingdon Co. - 152 ac dairy, dbl 6 parlor Call Rachael or Dallas
- F302 Mifflin Co. - 131 ac dairy, contract pending Call Dallas
- R101 Mifflin Co. - Rental 70 ac land & barn Call Dallas
- F201 Snyder Co. - 144 ac Xmas tree farm Call George

DALLAS E WILL Farm & Land Specialist Ofc 717-248 5451 Hm 717-543-5685	RACHAEL PORT Hm 814-669-4194 GEORGE HARRISON Ofc 717-286-1733 Hm 717 672 9127	RICHARD WALTERS Hm 717-436-8471 LES STOTTLE Hm 717-734 3695 HAROLD FORD Hm 717-535 5913 Ofc for Above Names 717-436 8839
--	---	---

SERVING THE FOLLOWING COUNTIES WITH BROKERAGE AND APPRAISALS Mifflin, Centre, Huntingdon, Juniata, Perry, Snyder, Northumberland and Union

MEMBER OF LOCAL MULTI-LISTS

NORTH CENTRAL PA

371 ac. operating dairy farm, 157 tie stalls, S.S. pipeline, bulk tank, barn cleaner, liquid manure system, 5 silos, lg. house + much more, must see — \$325,000.

149 ac. open & wooded land, gorgeous views, exc. hunting area, just timbered. \$60,000.

127 ac. w/bank barn, exc. for horses, beef, etc; no house. Asking \$88,000.

67 ac. farm, all pasture, house, barn, well, spring, 48 stanch, barn cleaner, pipeline, 2 box stalls, silo, asking \$110,000

246 ac. operating dairy farm, 2 houses, barn, silo, ponds, owner anxious, asking \$300,000.

166 ac. former potato farm, machine shed, potato storage + work shop, exc. land, great views, \$200,000.

255 ac. dairy farm, 40 cow barn, glass pipeline, barn cleaner, silos, bulk tank, calf barn, heifer barns, corn storage, 4 bulk bins, lg 4 bdrm house + 2 bdrm mobile home. Exc. land, Century farm offering at \$290,000.



9 Cone Street
Wellsboro, PA 16901
717-724-3500

WIMPLE ASSOCIATES

630 ACRE FREE STALL has 300 acres tillable, 150 pasture and 160 acres of woods. Barn has 100 free stalls with double 5 herringbone parlor, 5 large unloading silos. Heifer barn plus several other out-buildings. Nicely remodeled 7 room home. Cattle & equipment available. \$400,000

1700' PLATEAU make this level 267 acres an ideal spot for an airstrip. Most of the land is tillable and it sets back on a 1/4 mile lane. Two barns. See Mt. Equinox over 100 miles away on a clear day. ONLY \$148,000

END OF LANE SETTING for this 204 acre farm in Amish country. Adjacent to beautiful 18 hole golf course. Very good barn has 67 large ties, 2" Boumatic pipeline, 1000 gallon tank, 3 unloading silos, 10 calfstalls, 2 grain bins. Much money spent remodeling the 3 bedroom 1856 home. PRICED RIGHT AT \$195,000

MORT WIMPLE ASSOCIATES
SLOANSVILLE, N.Y.
518-875-6355
FAX: 875-6749

FREE DAIRY, ACREAGE OR GENERAL FARM CATALOGUES

CENTRAL VIRGINIA

LOVELY OLD TWO-STORY VIRGINIA FARMHOUSE - features 4 BR, beautiful rolling fields, numerous support bldgs, streams and fencing - 65± AC located at the foothills of the Blue Ridge Mtns \$205,000.

CAPTIVATING VIEWS - with this 99± AC farm, 1 1/2 story uniquely designed brick home, rolling pastures, well fenced, long road frontage, 13 springs, 2 streams, and a 5 acre lake site \$249,000.

ROLLING FARMLAND - of 66± AC, woodlands & streams, pasture & hayfields comprise this property - two ranch-styled residences exist, other structures include two large pole barns w/workshop \$197,000.

RESTORED COLONIAL HOME - containing 3840 sq. ft. and has undergone a beautiful restoration - hardwood and white pine floors, french doors, stone fireplaces, raised paneled doors are just part of the old charm, breathtaking views of the Blue Ridge Mtns, barn, several out bldgs include an old summer kitchen all situated on 92.94 AC.

ANNA CRAIG REALTY, INC.
P.O. Box 448
Lovingson, Va. 22949
804-263-4917
P.O. Box 310
Amherst, Va. 24521
804-946-7064

WIMPLE ASSOCIATES

HIGH-PRODUCING MONEYMAKER: 475 acres with 300+ tillable. 250 acres in alfalfa. Barn has room for 200 head, milks 104 in large ties on 2" Boumatic 8 unit pipeline, 2000 gallon tank, Patz cleaner with stacker, 20x70 and 20x90 silos 30x60 heifer barn. Good 10 room home with pool. \$350,000 bare. Cattle/equipment available.

LIFETIME OWNER offers this 98 acre hill-top farm near Pennsylvania border. farm has 65 acres tillable, 19 pasture and 11 acre woodlot. Very good 9 room home with modern wainscoted kitchen, hardwood floors and 2 story garage. 40x60 barn; ideal for beef. JUST LISTED! \$98,000

NEAR SHOWPLACE FREE STALL: 285 acres in excellent farming region below Rochester. 250 acres tillable. Very good barn has 125 free stalls, double 6 Herringbone Delaval parlor, 1500 gallon tank. Heifer 7 calf barns. Tool shed. Modern 10 room home. Swimming pool. \$325,000

MORT WIMPLE ASSOCIATES
SLOANSVILLE, N.Y.
518-875-6355
FAX: 875-6749

FREE DAIRY, ACREAGE OR GENERAL FARM CATALOGUES

4 COUNTIES REALTY, INC.

PO Box 67
3480 Oneida Street
Chadwicks, NY 13319

OFFICE PHONE: 315-737-4489 TOLL FREE: 1-800-736-4089
BROKER: GEORGE DEMEREE SALES MGR.: JANICE R. THORN
315-823-0288 315-734-0323

#105 HOBBY FARM or horse farm-country living at it's best & affordable, too 3 bedroom, 2 bath three yr. old modular home & 27 acres-listed at \$89,900 00.

#107 - FARM LAND with panoramic view & all kinds of potential for development. Excellent location - 3 miles from Frankfort & 7 miles from Utica. 3450 ft. of road frontage-206 acres w/barn-ideal hobby or horse farm, water falls & large wooded area on property. \$220,000 House and 8 acres across road could go with it for additional \$110,000

#200-32 ACRES picture a lovely home on a rolling hillside overlooking a valley. Have your own horses and enjoy the country air on this property. Subdivide into 5 lots of 5 acres or more and help pay for your dream. Map available with proposed lots and road layout. Seller also has horses for sale Sangerfield-\$59,500.

#201 - 350 ACRE FARM w/235 tillable-74x176 ft barn, w/144 stalls & separate calf room, double-six herringbone parlor w/12 units-milk house w/ office, utility room, bathroom & shower. 20x60, 20x50 & 24x60 ft silos 2-family home-in good condition, offered at \$425,000

31 - 213 ACRE DAIRY FARM w/nine room house, 100x40 ft barn, like new 30x60 ft. machinery shed, silo w/cement pad - also 2 stocked fish ponds, special stone formations & cave on property-offered at \$230,000.

GIVE GEORGE A CALL FOR ALL YOUR NEEDS IN FARMS AND J.R. THORN FOR RESIDENTIAL. WE HAVE MANY LISTINGS TO MEET ANY NEED.