



**1980 30' FLATBED,  
10 TON GVW  
908-322-4038 Eves.**



**1970 TRAILMOBILE**  
40 Ft. Tandem Slider Trailer, Good Rubber, Good Brakes, Good Shape, 10'6" Undercarriage Box, Good Condition  
**\$2,895**  
Ph: 717-354-4366 Bet. 7 AM - 5 PM

**35 TRUCKS & TRAILERS**

**Royal Automotive**  
TRUCK SALES & LEASING

Coopersburg, Pa. Rt. 309

215-282-4090

Just Off I-78, Between Allentown & Quakertown



1985 GMC Thermo King Reefer Cargo Van, w/Side Door, 350 V8, AT, PS, PB, 77,000 Miles, Med Temp. Brand New Engine, 3 Yr 50,000 Mile New Engine Warrantee Available For Sale Or Lease



Stake Body Dumps In Good Working Condition, Priced Under \$5,000 - While They Last



Large Selection of Cube & Step Vans To Choose From, All Different Makes & Sizes, Priced To Your Budget



We Got Reefers All Different Types & Sizes To Choose From Starting At \$3,900



US Government Retires 1982 Int. \$1700 Dump 361 V8, 5 Spd/2 Spd, Air Brakes, 10' Power Angle, Snow Blade With Only 2,000 Original Miles



US Government Retired 75 GMC Tractor Big Block V8, 5 Spd/2 Spd Rear, Air Brakes PS, 50,000 Maintained Miles Ideal For Dumps, Hot Shot Tractor Or What Ever First \$3,900 00 Takes It

**TWO ACRES OF ALL TYPES USED TRUCKS.**  
**"IF WE DON'T HAVE IT, WE'LL GET IT"**



**FOR EXCEPTIONAL VALUES IN USED EQUIPMENT:**

**POSSUM BELLY TRAILERS**

- 1990 Eby 48'x13'6"x102" Cattle Trailers
- 1987 Eby 48'x13'6"x96" Cattle-Hog Combo
- 1985 Eby 48'x13'6"x96" Cattle-Hog Combo
- 1986 Eby 30'x12'x96" Double-Deck Straight Hog Trailer

- 1982 Barrett 46'x13'6"x96" Cattle Trailer
- 1976 American 45'x13'6"x96" Cattle-Hog Combo

**GRAIN TRAILERS**

- 1988 J&J, 35', 3 Axle, End Dump
- 1991 Timple 40'x66" Sides - Brand New!
- 1988 Timple 42'2"x78" Sides - Like New!
- 1968 Hill 28'x66" Sides-Nice Dump Trailer

**TRUCK BODIES**

- 20'L x 8'W Eby Aluminum Livestock Body
- 9'L x 7'6"W Eby Aluminum Livestock Body
- 16'L x 8'W Eby Aluminum 48" Side Grain Body



**GOOSENECK TRAILERS**

- 1986 Keifer 22'x6'6"x8' Alum. Elec. Brakes
- 1988 Moritz 24'x7'x6' Steel Elec. Brakes
- 1990 Eby 16'x7'x7 1/2' Alum. Hyd. Brakes

**M.H. Eby, Inc.**

Route 23  
Blue Ball, PA 17506  
717/354-4971 800/292-4752  
FAX: 717/355-2114

**M.H. Eby, Ohio**

4435 State Route 29  
West Jefferson, OH 43162  
614/879-6901 800/752-0507  
FAX: 614/879-6904

**WE ARE**  
30 MIN. from HARR.  
30 MIN. from LANC.  
30 MIN. from READING  
45 MIN. from YORK

**RTE. 422,  
2300 WEST  
CUMBERLAND ST.,  
LEBANON, PA**



LEBANON, PA

717-274-2000

(Across From The Boscov's Mall)

**FAMILY OWNED  
&  
OPERATED FOR  
22 YEARS**

**THIS IS JUST A SMALL PORTION OF OUR HUGE INVENTORY**



**85 Ford F-250**  
Diesel Power, 4 Speed,  
8600 GVW, 54,000 Miles,  
Real Clean



**89 Ford F-250 4x4**  
Diesel 7.3, Auto With Overdrive,  
A/C, 8600 GVW, Dual Tanks,  
Dark Charcoal Gray



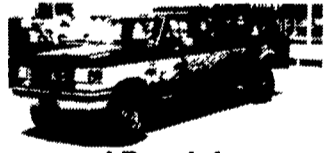
**87 Chevy C-30 Dually**  
With Texas Style Bed  
Perfect To Pull Gooseneck  
Trailer, 454 Auto, AC, Sleeping  
Area, 41,000 Miles



**89 Ford E-350 Cube Van**  
351 F.I. Auto, AC, 15 Foot,  
Aluminum Body, Roll Up  
Rear Door



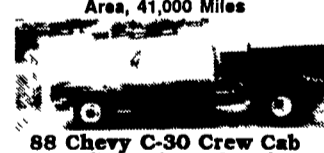
**86 Chevy C20 4 Door  
Crew Cab**  
1 Owner, 56,000 Miles, 350  
V8, AT, AC, Tilt, Cruise,  
Pwr. Windows & Locks,  
Running Board



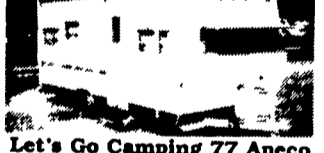
**4 Door 4x4  
88 Ford F-350**  
V8, AT, Dual Tanks, AC, Trailer  
Tow Pkg., 28,000 Miles



**Super Cab  
88 Ford F-250 4x4**  
Fuel Inj., V8, Auto, AC, 8600  
GVW, 4 Super Cabs To Choose From



**88 Chevy C-30 Crew Cab**  
Dually, Cab & Chassis  
Very Clean, 1 Owner, 41,000 Miles  
454, 4 Spd, AC



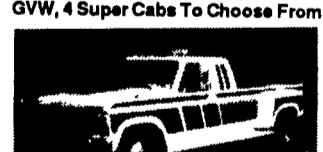
**Let's Go Camping 77 Apeco**  
Self Contained Camper  
19 Foot, Faulkner Awning,  
Sink, Stove, Refrigerator,  
Bathroom Facilities, Room mounted  
A/C  
**\$2,995**



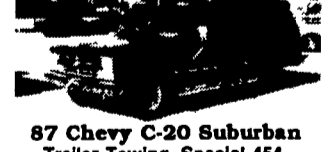
**Farm Truck  
85 Ford F-250**  
V8, 4 Spd, 8600 GVW, Runs Great  
**\$4,985**



**89 FORD F350 DUALLY  
XLT LARIAT**  
460 f.i. 5 spd. O/D A/C, tilt cruise,  
running boards, 24,000 original  
miles, warranty coverage to  
60,000 miles



**Diesel Power 84 Ford F-250**  
Super Cab Dually  
6.9 Diesel, Auto, AC, Tilt  
& Cruise, Real Clean



**87 Chevy C-20 Suburban**  
Trailer Towing, Special 454,  
Auto, Frt. & Rear A/C, Rear  
Seat, 9 Passenger, Super Nice



**78 F-150 With Reading  
Utility Box**  
Auto, Great Body, Needs Engine  
**\$1,895**



**86 Ford F-350  
Crew Cab Dually**  
47,000 Original Miles, 460, 4 Spd.,  
AC, Dual Tanks, Running Boards  
**\$10,985**



**86 Ford Bronco**  
4x4 Fuel Inj., 302, 4 spd.,  
lock out, A/C, 55,000 original miles  
**\$7,995**



**83 Ford E-350 Van**  
Centurion Conversion  
A Real Pulling Machine For That  
Gooseneck, 460 Auto, AC,  
Dual Wheels



**Diesel Power, 85 Ford F-350**  
12 Foot Aluminum Box, 6.9,  
4 Spd, 84" Cab To Axle,  
72 Gallon Fuel Tank,  
66,000 Miles



**85 Chevy C-10 4x4**  
Very Clean, Very Nice, V8,  
4 Speed, AC, Lockout Hubs,  
Running Boards



**4x4 88 Ford F-250**  
351 F.I. Auto, AC, Trailer  
Tow Pkg., 88000 GVW, 35,000  
Miles, Nice Truck



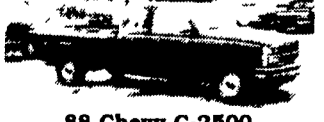
**90 Ford Ranger XLT**  
Only 10,000 Miles, V6, 5 Spd,  
A/C, Tilt, Cruise, Alloy Wheels,  
All New Truck Warranties



**Super Duty, 88 Ford F-450**  
Cab & Chassis  
14,500 GVW, 161 Inch  
Wheelbase, Fuel Inj., 460  
5 Spd. Overdrive



**86 Ford F-150 4x4**  
Fuel Inj., 302, 4 Speed, Dual  
Tanks, Lockout Hubs, A Lot Of  
Truck For  
**\$5,995**



**88 Chevy C-2500**  
4 Wheel Drive  
Fuel Inj. 350, AT, AC, Pwr.  
Windows & Locks, Rear  
Seat, 40,000 Miles, Very Clean



**4x4 Diesel Super Cab  
89 Ford F250 XLT Lariat**  
7.3 Diesel, Auto, AC, Custom  
Wheels, A Good Looker