

National Grain Market

St. Joseph, Mo.
Wednesday, June 26, 1991

USDA DAILY NATIONAL GRAIN MARKET SUMMARY WHEAT PRICES HIGHLY MIXED WEDNESDAY, 5 CENTS HIGHER TO 1 CENT LOWER. CHICAGO FUTURES LOWER BUT KANSAS CITY HIGHER CORN, SORGHUM AND SOYBEANS 1 TO 3 CENTS LOWER HOT SCORCHING WEATHER GOOD FOR WHEAT HARVEST, BUT MORE AND MORE REPORTS OF BAD YIELDS OFFSET HARVEST PRESSURE ALSO, SOME EXPORT ORDERS AND OFFERINGS REPORTED, INCLUDING FLOUR HOT WEATHER JUST WHAT CORN NEEDS, ESPECIALLY HOT NIGHTS AND THAT IS CERTAINLY IN THE FORECAST. TIME OF GROWING SEASON WHEN WEATHER IMPORTANT PRICE DETERMINING FACTOR CORN AND SOYBEANS IN DIRE NEED OF EXPORT ORDERS AND TO HEAR FROM U S R CREDIT MONEY SOYBEAN PLANTING FOR THIS SEASON ABOUT HISTORY, EXCEPT WHEAT HARVEST EARLIER THAN NORMAL THIS YEAR AND MORE DOUBLE CROPPING UNDERWAY NO BIG PROFIT OUT OF WHEAT CROP SO SOME PRODUCERS TRYING TO MAKE ENDS MEET BY FOLLOWING WITH A BEAN CROP.

EXPORT NEWS: SOUTH KOREA BOUGHT 22,000 TONNES OF U S WHEAT FOR JULY-AUG SHIPMENT BRAZIL BOUGHT 34,000 TONNES OF HARD RED WINTER WHEAT UNDER EBP FOR JULY-AUG. SHIPMENT. TODAY CHANGE YEAR AGO 06/26/91 06/25/91 06/27/90 WHEAT. KANSAS CITY 2.90-2.91 UP 2 3.31-3.36 MINNEAPOLIS 2.96-2.98 DN 1/2 3.89 1/4-3.94 1/4 PORTLAND 3.44-3.45 UP 5 3.62-3.64 ST. LOUIS 2.70-2.75 DN 1-UP 1 3.25-3.38.

CORN, U.S. NO. 2 YELLOW: KANSAS CITY 2.47-2.49 DN 1 2.85-2.89 MINNEAPOLIS 2.37 1/4 DN 1/4 2.76 SO. IOWA 2.43-2.44 UP 1-DN 1 1/2 2.82-2.86 OMAHA 2.33-2.35 DN 1 2.71-2.72.

SOYBEANS, NO. 1 YELLOW: KANSAS CITY 5.74-5.76 DN 2 6.14-6.20 MINNEAPOLIS 5.65 1/2 DN 3 1/2 6.01 SO IOWA 5.69 1/2-5.74 DN 1 1/2-1

6.04-6.07 1/2 C. ILL. PROCESSORS 5.70 1/2-5.77 1/2 DN 2 1/2-3 1/2 6.17-6.22.

*KANSAS CITY, US NO. 1 HARD RED WINTER WHEAT, ORDINARY PROTEIN. MINNEAPOLIS, US NO 1 DARK NORTHERN SPRING WHEAT, 14% PROTEIN. PORTLAND, NO. 1 SOFT WHITE WHEAT, ST. LOUIS, NO. 2 SOFT RED WINTER WHEAT.

FUTURES CLOSE: KANSAS CITY (JULY) WHEAT 2.81 1/4 UP 1 1/2 3.26 1/4 MINNEAPOLIS (JULY) WHEAT 2.76 DN 1/2 3.44 1/4 CHICAGO (JULY) WHEAT 2.73 DN 1 3.33 1/4 (JULY) CORN 2.37 1/4 DN 1/4 2.87 (JULY) SOYBEANS 5.60 1/2 DN 2 1/2 6.08.

EXPORT: BARGE OR RAIL, PORT OF NEW ORLEANS OR NORTH TEXAS GULF. NO. 1 HARD RED WINTER WHEAT ORDINARY PROTEIN 3.23-3.25 DN 1 - NC 3.62-3.65 NO 2 SOFT RED WINTER WHEAT 3.10-3.11 NC 3.56-3.57 NO.2 YELLOW CORN 2.63-2.66 DN 1 3.04-3.06 NO.2 YELLOW SORGHUM RAIL 4.45 DN 1 BARGE 4.58 NC 5.00-5.05 NO.2 YELLOW SOYBEANS 5.98-5.99 DN 1 6.28-6.32.

Green Dragon Hay

Ephrata, Pa.
Friday, June 21, 1991

Report Supplied by Auction
TOTAL LOADS: 71.
MIXED HAY: 55.00-105.00.
ALFALFA: 75.00-128.00.
TIMOTHY: 65.00-115.00.
GRASS HAY: 76.00.
STRAW: 65.00-87.00.
EAR CORN: 91.00-96.00.
OATS: 2 LOADS, 1.85 BU.

Keister's Hay

Middleburg, PA
Tuesday, June 25

Report supplied by auction
29 LOADS.
ALFALFA: 175.00.
MIXED HAY: 50.00-117.50.
STRAW: 70.00.
EAR CORN: 80.00-100.00.
OATS: 1.85-2.55 BU.

Belleville Hay

Wednesday, June 26
Belleville, PA

Report Supplied by Auction
TOTAL LOADS: 12 LDS. HAY.
MIXED HAY: 50.00-112.50.
STRAW: 70.00 AND 75.00.
OATS: 1.75 AND 2.00 BU.

Dewart Hay

Dewart, PA.

Monday, June 24, 1991
Report Supplied by Auction
5 LOADS OF HAY, 40.00-110.00.
CORN: 65.00-80.00.
OATS: 1.75 BU.

National Egg Market

Wednesday, June 26, 1991

NATIONAL EGG MARKET - AT A GLANCE: Prices were unchanged. The market tone was steady to fully steady. Demand was mixed from light to good, best where featured. Supplies were adequate for large, and heavier eggs were often short. The previous week's surplus of mediums cleared well, and several areas were short while other areas were generally adequate. Breakers generally had adequate shell eggs, and some areas paid more for light weight eggs. Live hen markets were steady.

HEAVY FOWL: .20-1.60.
LIGHT FOWL: .05.
MIXED FOWL: .30-1.10
BANTAMS: 1.10-1.70.
CHICKS EACH: .40-1.30 EACH.
GOSLINGS, EACH: 1.50-1.75.
DUCKLINGS: .50 EACH.
BUNNIES EACH: 30-1 00 EACH
ROOSTERS: .45-1.60.
GEESE: .45-1.00.
DUCKS: .35-1.00.
RABBITS: .20-1.40.
PIGEONS: 1.40-2.50.
GUINEAS: 1.60-2.00.
GUINEA PIGS, EACH: 1.00-2.00 EACH.

WHITE EGGS: EXTRA LARGE & JUMBO .56-.83; LARGE .34-.80; MEDIUM .27-.50; PULLETS .12-.15.

BROWN EGGS: EXTRA LARGE & JUMBO .50-.94; LARGE .33-.64; MEDIUMS .27-.35.

Heinsey's Poultry

Roots, East Petersburg
Tuesday, June 25, 1991

Muscovy Ducks - Drakes Range .90 - 1.04.
Muscovy Ducks - Hens .90 - 1.10.
Pekin Ducks .30 - .42.
Pullets 5-7 .24 - .38.
Red Fowl 4-4.5 .30 - .42.
Red Fowl 5-6 .50 - .72.
Crossbred Roosters 4-6 .20 - .62.
Crossbred Roosters 7-11 .20 - .74.
Crossbred Fowl 5-9 .18 - .54.
Banty Roosters 2.50 - 5.00 ea.
Banty Hens 1.25 - 3.00 ea
Guinea Pigs .50 - 2.00 ea.
Guinea Fowl 1.50 - 1.65.
Kid Goats 20.00 - 34.00 ea.
Geese 8-11 .20 - .34.
Pigeons 1.35 - 1.75 ea.
White Pigeons 1.50 - 2.00 ea.
Rabbits 4-6 .40 - .68; 7-11 .50 - .74
Leghorn Hens .14 - .22.
Bunnies .50 - 1.00 ea.
Doves 1.50 - 2.75 ea
Silkies 3.50 - 4.75 ea
Goats 40.00 - 62.00 ea.
Leghorn Roosters .12 - .22.
Total Coops Sold 976.



FOR SALE SHAVINGS & SAW DUST

- ★ Delivered To Your Location
- ★ Year Round Supply
- ★ Excellent for Dairy or Horses

Call For Price To Your Area
717-653-5935

J.D. Martin inc.

Mt. Joy, PA



Every Wednesday
At 11:00 A.M.

GOOD'S AUCTION
111 Maple Ave.
Leola, PA 17540
717-656-8911
717-656-9554

Selling Wed. July 3
20 Cows From
Lebanon Co. Herd

40 Head Of Heifers
From Edgar Blose
Jefferson County

See Page B34 for details

**NEW HOLLAND SALES STABLES INC.
THE ACTION AUCTION**

HORSE SALE
Fri., July 19 - 7:00 P.M.
Tack 6 P.M.
Horses Hitched 12 Noon

LIVESTOCK IS OUR ONLY BUSINESS

MONDAY

SLAUGHTER HOGS



EARLY BIRD HOG SALE
8:00 A.M.

Sell Your Hogs At New Holland Sales Stables, Inc.
See them weighed, sold and pickup your check.

10:00 AM



HORSES
MULES

1:30 PM

BEEF SALE



SHEEP
GOATS



CALVES

WEDNESDAY

HEIFER SALE
11:00 AM

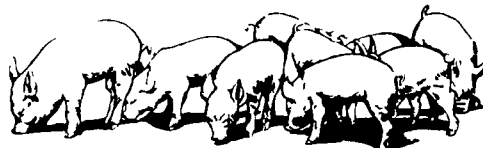
COW SALE 12:00 NOON



We have the usual run of 50 to 100 Heifers, all ages.
Loads of fresh cows and springers from our regular shippers.
Also some local fresh cows and springers.

1:30 P.M.

FEEDER PIG SALE



Pigs are accepted after 6:30 A.M. State graded from 8 to 12
Dairy Barn and Feeder Pig Barn are cleaned and disinfected weekly for your protection.

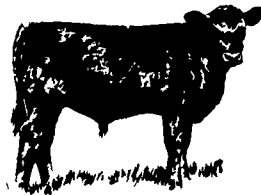
THURSDAY

Beef Auction
10:00 A.M.

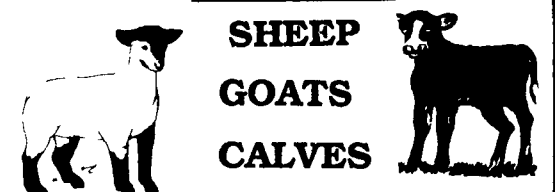
BULLS
STEERS
BEEF COWS



1:00 P.M.
STOCKERS
&
FEEDERS



12:30 P.M.



SHEEP
GOATS
CALVES

NEW HOLLAND SALES STABLES, INC.
12 Miles East of Lancaster Off Route 23, New Holland, Penna.

MANAGERS

Norman & David Kolb - 717-397-5538

Field Representatives

Luke Eberly - 215-267-6608 738-1865
Homer Eberly - 215-267-3047
Ron Ranck - 717-656-9849

Sale Barn Office Manager
Roger Floyd - 717-354-4341
FAX # 717-355-0706

Order Buyer
Paul Good - 215-445-6662